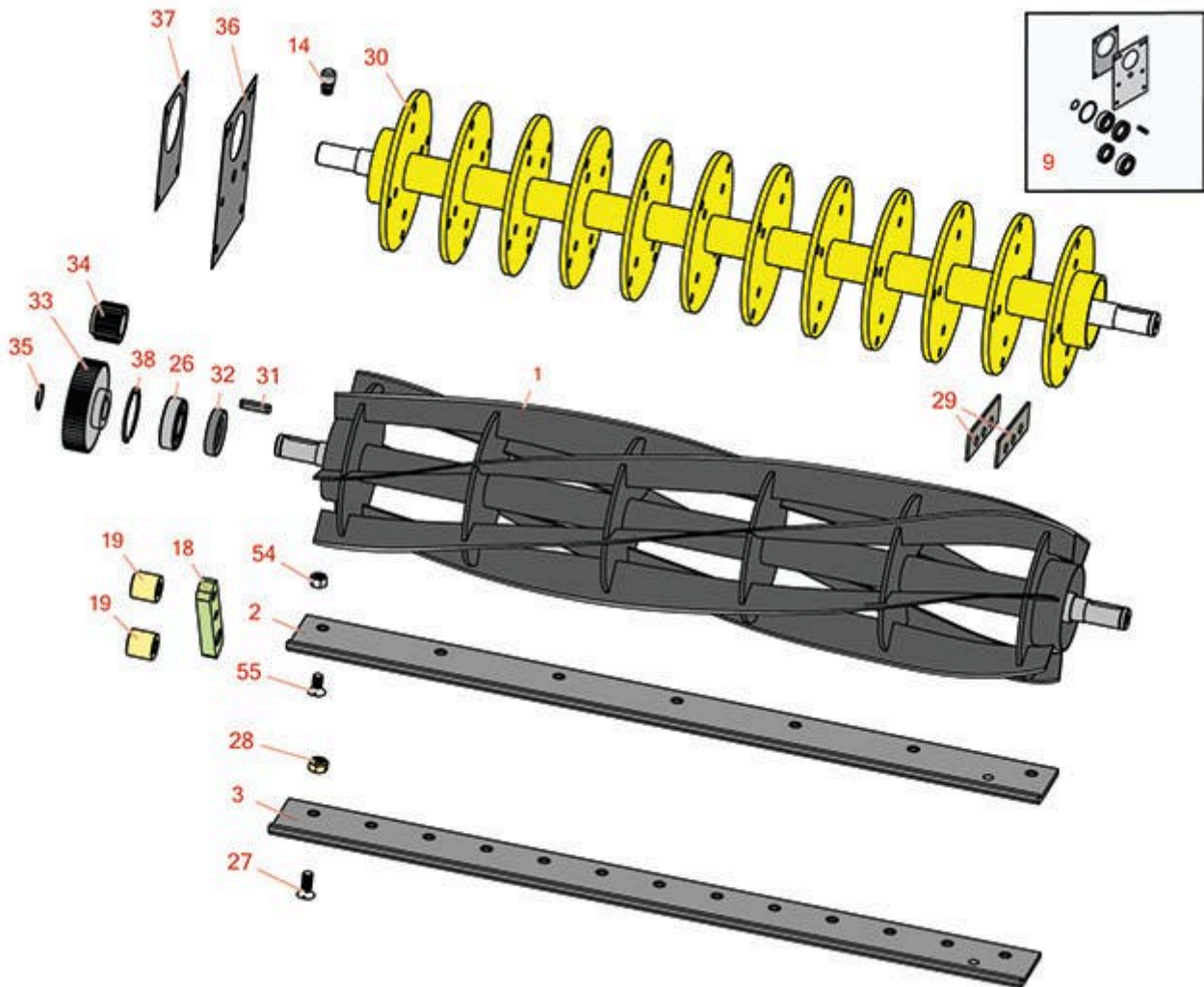
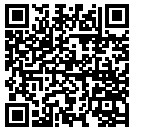




# Replaces John Deere 303 Hydraulic Gang Mower Parts

MK II Cutting Unit  
Reel, Bedknife & V-Cut Reel

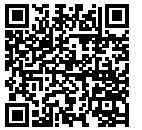


All original equipment manufacturers names and part numbers are used for identification purposes only, and we are in no way implying that our products are original equipment parts. Prices subject to change without notice.



# Replaces John Deere 303 Hydraulic Gang Mower Parts

MK II Cutting Unit  
Reel, Bedknife & V-Cut Reel



Item No	R&R Part No.	OEM Part No.	Description	Qty Req	Order Quantity
---------	--------------	--------------	-------------	---------	----------------

## R&R Reels, Lifetime Guaranteed

1	RAET10900	AET10425, AET10900, AMT2872, ET11308, ET13665	Reel - 6 Blade	1	
1	RAET10426	AET10426, AET10901, ET11310, ET13666	Reel - 8 Blade	1	
1	RAET10427	AET10427, ET11439, ET13667	Reel - 10 Blade	1	

## R&R Bedknives, Lifetime Guaranteed

2	RET11434	ET11434	Bedknife - 7 Hole	1	
2	RET11540	ET11540, ET17951	Bedknife - 7 Hole Low Cut	1	
3	RET15739	ET15739	Bedknife - 13 Hole Standard	1	

## Overhaul Kits

9	R100173		Overhaul Kit - Cutting Unit	0	
---	---------	--	-----------------------------	---	--

*Tech Note: Includes 2 ea.:RA203605 Bearings; 1ea.: R1056 Snap Ring, RET10872 Gasket, RET10873 Gasket, RET11301 Key, RET13673 Seal, RET13674 Seal & RN123155 Snap Ring:*

## Other Parts Available

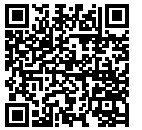
14	R302-14	JD5801	Fitting - Relief	1	
18	RET13688	ET13688	Bracket - Front Roller	2	
19	RET11414	ET11414	Spacer - Front Roller	4	
26	RA203605	ET10824	Bearing	2	
26	RJD7678	JD7678	Bearing	2	

All original equipment manufacturers names and part numbers are used for identification purposes only, and we are in no way implying that our products are original equipment parts. Prices subject to change without notice.



# Replaces John Deere 303 Hydraulic Gang Mower Parts

MK II Cutting Unit  
Reel, Bedknife & V-Cut Reel



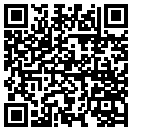
Item No	R&R Part No.	OEM Part No.	Description	Qty Req	Order Quantity
27	<b>R19M5055</b>	19M5055, 19M8551	Screw - Bedknife M10-1.5 x 25	13	
<i>Tech Note: Fits 13 Hole Bed Knife Only:</i>					
28	<b>R14M7400</b>	14M7400	Locknut - 10mm	13	
29	<b>RET15712</b>	ET15712	Verti-Cut Blade - Long	40	
<i>Tech Note: Fits Inside Discs:</i>					
29	<b>RET15713</b>	ET15713	Verti-Cut Blade - Short	8	
<i>Tech Note: Fits Outside Discs:</i>					
30	<b>RET15302</b>	ET15302	Shaft - V-Cut w/o Blades	1	
31	<b>RET11301</b>	ET11301	Key - 1/4 x 1/4 x 1-1/4	1	
32	<b>RET13673</b>	ET13673	Seal - Reel Motor End	1	
32	<b>RET13674</b>	ET13674	Seal - Reel	1	
33	<b>RET11300</b>	ET11300	Gear - Reel	1	
34	<b>RET11299</b>	ET11299	Gear - Hyd Motor	1	
35	<b>R1056</b>	ET11322, R26192	Ring - Snap Reel	1	
36	<b>RET10872</b>	ET10872	Gasket - Gear Case	1	
37	<b>RET10873</b>	ET10873	Gasket - Hyd Motor	1	
38	<b>RN123155</b>	N123155	Ring - Snap	1	
54	<b>RET15804</b>	ET15804	Locknut - 3/8-16 Top Lock	13	
<i>Tech Note: Fits 13 Hole Bed Knife Only:</i>					
55	<b>R170555</b>	ET11435	Screw - 3/8-16 x 3/4 Flat HD	7	
55	<b>R190652</b>		Screw - Regular - 3/8-16 x 1	7	

All original equipment manufacturers names and part numbers are used for identification purposes only, and we are in no way implying that our products are original equipment parts. Prices subject to change without notice.



# Replaces John Deere 303 Hydraulic Gang Mower Parts

*MK II Cutting Unit  
Reel, Bedknife & V-Cut Reel*



All original equipment manufacturers names and part numbers are used for identification purposes only, and we are in no way implying that our products are original equipment parts. Prices subject to change without notice.