

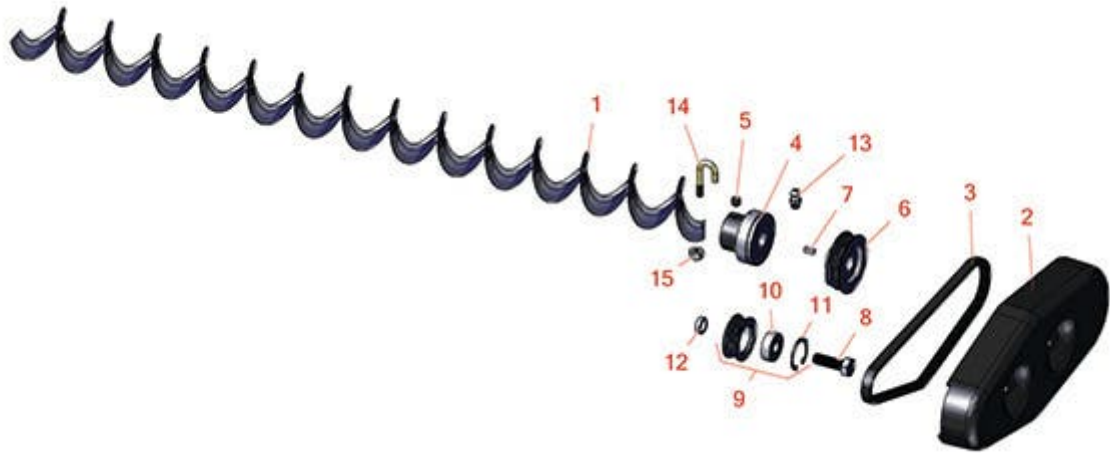


# Replaces Toro Greensmaster TriFlex

## 3420 Parts

*DPA Cutting Unit - Models 04613, 04614 & 04615*

*Rear Roller Brush - Model 04724*



All original equipment manufacturers names and part numbers are used for identification purposes only, and we are in no way implying that our products are original equipment parts. Prices subject to change without notice.



# Replaces Toro Greensmaster TriFlex 3420 Parts

DPA Cutting Unit - Models 04613, 04614 & 04615  
Rear Roller Brush - Model 04724



Item No	R&R Part No.	OEM Part No.	Description	Qty Req	Order Quantity
1	<b>R105-6792</b>	104-1829, 105-6792	Brush - Rear Roller	1	
2	<b>R105-5719</b>	105-5719	Cover - Rear Brush	1	
3	<b>R105-5720</b>	105-5720	Belt - Poly V	1	
4	<b>R104-1842</b>	104-1842	Bearing - Roller	2	
5	<b>R3245-1</b>	244-19, 32104-67, 3245-1	Screw - Set 1/4-20 x 1/4	2	
6	<b>R106-6917</b>	106-6917	Pulley - Driven	1	
7	<b>R95-9619</b>	95-9619	Key - Square 1/8 x 1/8 x 5/16	1	
8	<b>R322-5</b>	01-178-0508, 20-26-AD, 20-26-AGD, 30-9000, 322-5, 513341, 519755, 908019P, N/A	Bolt - Hex HD 5/16-18 x 1	1	
9	<b>R104-1834</b>	104-1820, 104-1834	Idler Bearing - Assy	1	
10	<b>R251-259</b>	251-259, 251-307	Bearing - Ball	1	
11	<b>R104-4727</b>	104-4727	Ring - Retaining	1	
12	<b>R82-4240</b>	82-4240	Spacer - Bearing	1	

All original equipment manufacturers names and part numbers are used for identification purposes only, and we are in no way implying that our products are original equipment parts. Prices subject to change without notice.



# Replaces Toro Greensmaster TriFlex 3420 Parts



*DPA Cutting Unit - Models 04613, 04614 & 04615  
Rear Roller Brush - Model 04724*

Item No	R&R Part No.	OEM Part No.	Description	Qty Req	Order Quantity
13	<b>R302-5</b>	21-6010, 302-11, 302-37, 302-47, 302-5, 302-57, 302-58, 302-6, 31-0300, 32-9660, 60-0800, 62-3880, 92-4181	Fitting - Grease	2	
14	<b>R104-1830</b>	104-1830	Bolt - J	2	
15	<b>R3296-2</b>	32127-10, 3296-2, 9157404	Nut - #10 Lock	2	

All original equipment manufacturers names and part numbers are used for identification purposes only, and we are in no way implying that our products are original equipment parts. Prices subject to change without notice.