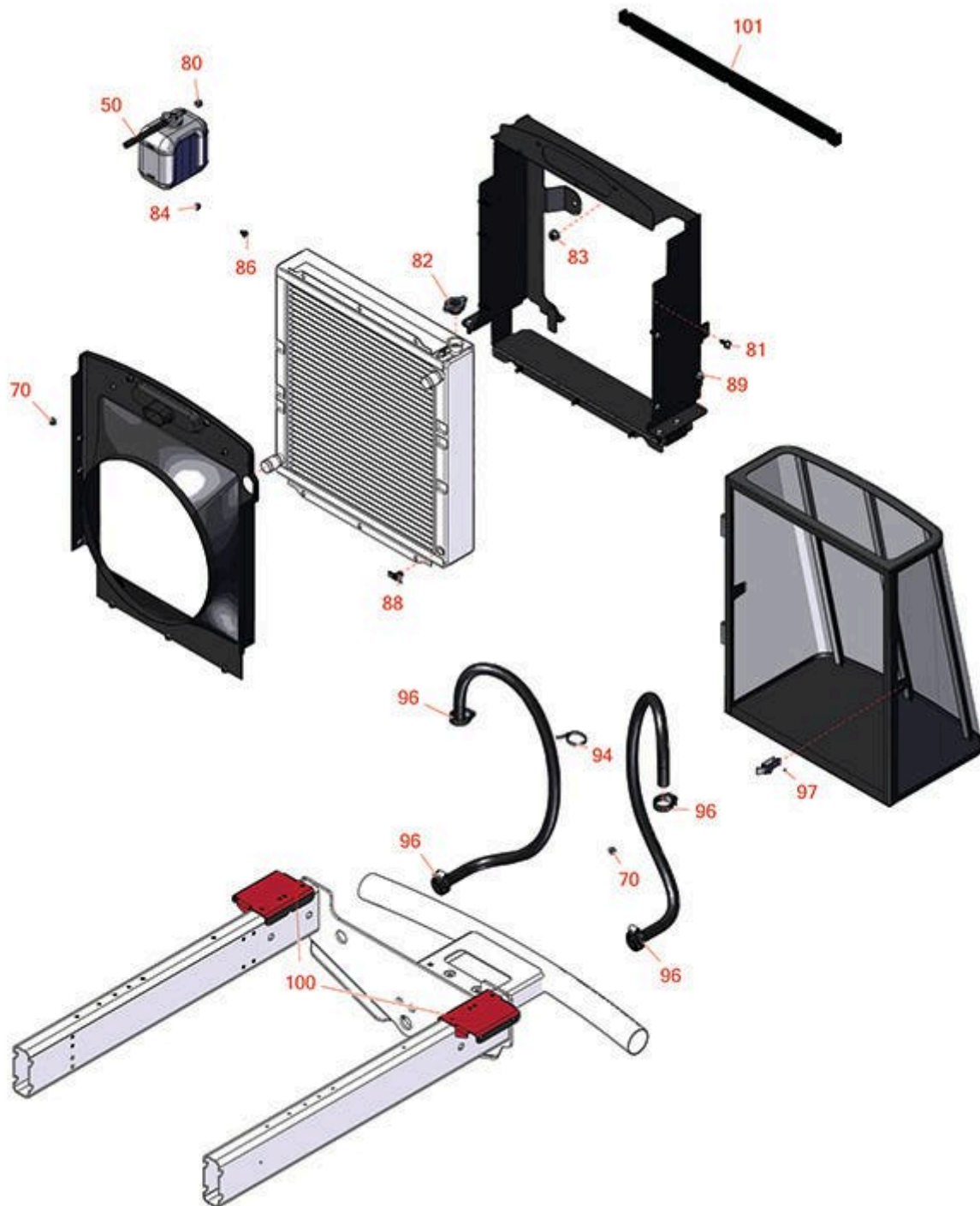




# Replaces Toro Reelmaster 5510-G Parts

*Traction Unit*

*Radiator & Cooling System*



All original equipment manufacturers names and part numbers are used for identification purposes only, and we are in no way implying that our products are original equipment parts. Prices subject to change without notice.



# Replaces Toro Reelmaster 5510-G Parts

Traction Unit

Radiator & Cooling System



Item No	R&R Part No.	OEM Part No.	Description	Qty Req	Order Quantity
---------	--------------	--------------	-------------	---------	----------------

## Hoses

50	<b>R110-3257</b>	110-3257, 63-7630	Hose-Fuel	1	
----	------------------	----------------------	-----------	---	--

## Other Parts Available

70	<b>R104-8300</b>	104-8300, 104-8300 , 119-4041	Locknut - 5/16-18 Flanged Y/Zinc	14	
80	<b>R92-2379</b>	92-2379	Clamp - Hose	3	
81	<b>R3234-5</b>	3234-5, 62-3310	Bolt - 5/16-18x3/4 Hx Ser Was HD	9	
82	<b>R93-5957</b>	120-1690, 93-5957	Cap - Radiator	1	
83	<b>R32128-49</b>	32128-49	Nut - 1/2-13 Hex Flange	4	
84	<b>R301504</b>	2296-42, 301504, 32127-24, 32128-33, 32146-17, 3296-16, 3296-42, 3296-42 , 915661P	Locknut - ESNA 1/4-20	1	
86	<b>R3234-13</b>	3234-13, 960151P	Bolt - Flanged Hex 1/4-20	1	
88	<b>R304-46</b>	304-46	Draincock	1	
89	<b>R32144-14</b>	32104-32, 32104-49, 32144-14	Bolt - Hex Washer 5/16-18 x 5/8	6	
94	<b>R3290-378</b>	30-1740, 3290-378, 52-6570, 60-4340	Cable Tie	1	

All original equipment manufacturers names and part numbers are used for identification purposes only, and we are in no way implying that our products are original equipment parts. Prices subject to change without notice.



# Replaces Toro Reelmaster 5510-G Parts

Traction Unit

Radiator & Cooling System



Item No	R&R Part No.	OEM Part No.	Description	Qty Req	Order Quantity
96	<b>R2412-34</b>	2412-34, 31-0120	Clamp - Hose .75-1.5	4	
<i>Detail Description: Stainless steel hose clamp with 5/16" slotted hex head, heat treated carbon steel, plated with zinc plus trivalent chromate for long lasting protection.:</i>					
97	<b>R3290-382</b>	3269-15, 3290-382	Rivet - 5/32 x 1/2 Pop Rivet	2	
100	<b>R110-5310-01</b>	110-5310-01	Bracket-Mounting	2	
101	<b>R110-5276</b>	110-5276	Seal-Foam-Radiator	1	

All original equipment manufacturers names and part numbers are used for identification purposes only, and we are in no way implying that our products are original equipment parts. Prices subject to change without notice.