



Replaces Exmark Lazer Z E-Series Parts

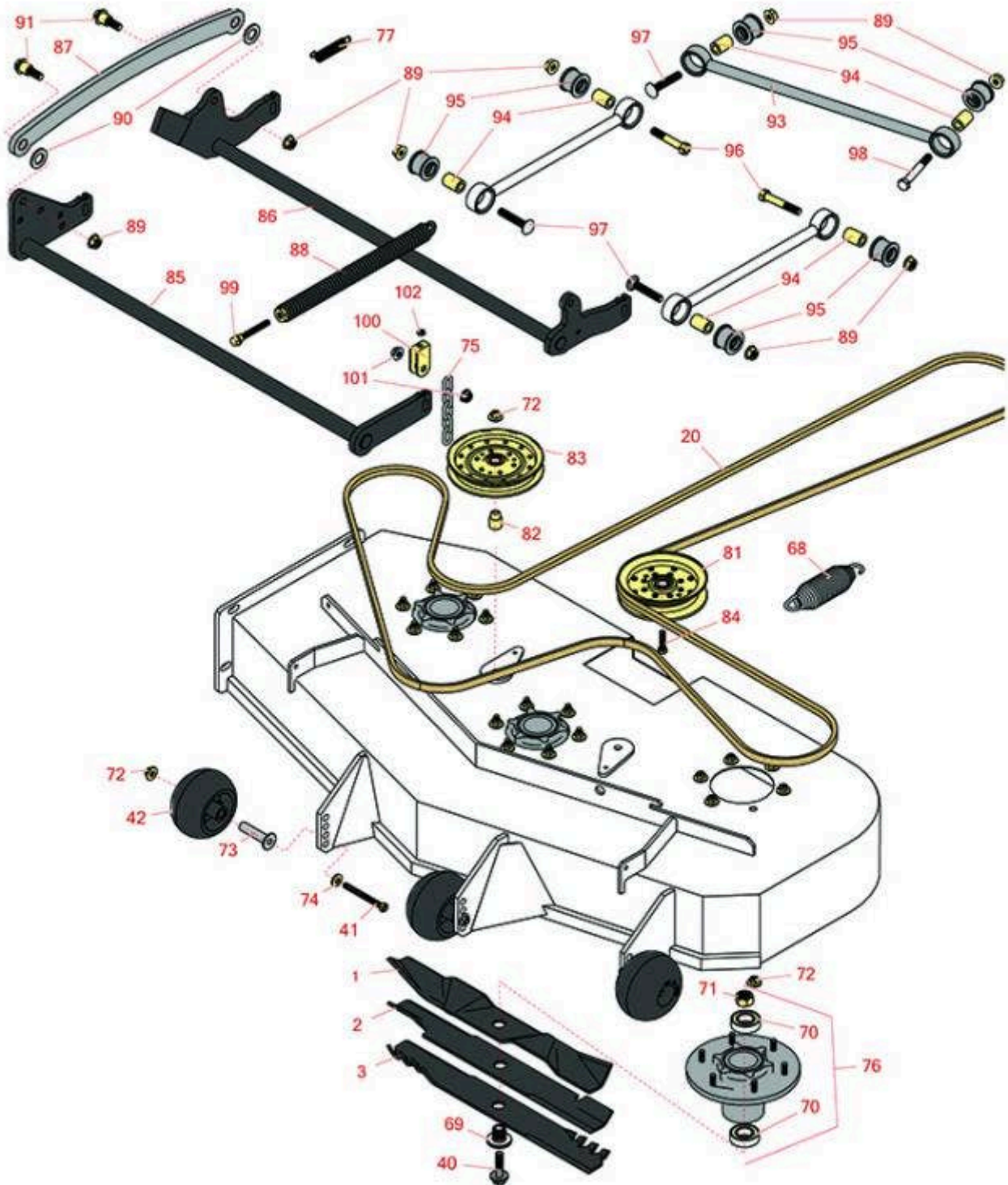
*Zero-Turn Mower with 60in Deck - Model LZE740EKC60400,
LZE742GKC604A3, LZE742GKC604C1, LZE751CKA604A1,
LZE751GKA604A1, LZE751GKA604C1, LZE801GKA604C1,
LZE730GKA604A3, LZE730GKA604B3, LZE740EKC604A3
60in Deck*





Replaces Exmark Lazer Z E-Series Parts

Zero-Turn Mower with 60in Deck - Model LZE740EKC60400,
LZE742GKC604A3, LZE742GKC604C1, LZE751CKA604A1,
LZE751GKA604A1, LZE751GKA604C1, LZE801GKA604C1,
LZE730GKA604A3, LZE730GKA604B3, LZE740EKC604A3
60in Deck



All original equipment manufacturers names and part numbers are used for identification purposes only, and we are in no way implying that our products are original equipment parts. Prices subject to change without notice.



Replaces Exmark Lazer Z E-Series Parts

Zero-Turn Mower with 60in Deck - Model LZE740EKC60400,
LZE742GKC604A3, LZE742GKC604C1, LZE751CKA604A1,
LZE751GKA604A1, LZE751GKA604C1, LZE801GKA604C1,
LZE730GKA604A3, LZE730GKA604B3, LZE740EKC604A3
60in Deck



Item No	R&R Part No.	OEM Part No.	Description	Qty Req	Order Quantity
Blades					
1	R103-6393	103-6393	Mower Blade - 20-1/2 Mulching	3	
2	RRB3065-2001	103-6403, 103-6403-S	Mower Blade - High-Lift 20.5 x 2.5in x 15/16 Mt Hole	3	
3	RRB4065-2001	116-5174, 116-5174-S	Mower Blade - Mulcher 20.5 x 2.5in x 15/16 Mt Hole	3	
Belts					
20	R135-5774	135-5774	Belt - 5V	1	
Other parts					
40	R109-9220	109-9220	Bolt - Sems 1/2-20	3	
41	R116-9362	116-9362	Bolt - Hex HD 3/8-16 x 3 3/4 GR8 YZ	3	
42	R103-8415	103-8415	Roller - Anti Scalp	3	
68	R116-6317	116-0133, 116-6317	Spring - Extension	1	
69	R103-3037	103-3037	Splined Bushing	3	
70	R116-0720	116-0720	Bearing - Ball - Special Triple Seal	6	
71	R116-7306	116-7306	Hex Nut - 3/4-16 with Nyloc	3	
72	R104-8301	104-8301, 109-6658	Locknut - 3/8-16 Nylon Flanged	31	
73	R116-8131	116-8131	Axle - Roller	3	
74	R98-5975	98-5975	Washer - Belleville	3	
75	R1-633447	1-633447	Chain - Deck Lift	4	

All original equipment manufacturers names and part numbers are used for identification purposes only, and we are in no way implying that our products are original equipment parts. Prices subject to change without notice.



Replaces Exmark Lazer Z E-Series Parts

Zero-Turn Mower with 60in Deck - Model LZE740EKC60400,
LZE742GKC604A3, LZE742GKC604C1, LZE751CKA604A1,
LZE751GKA604A1, LZE751GKA604C1, LZE801GKA604C1,
LZE730GKA604A3, LZE730GKA604B3, LZE740EKC604A3
60in Deck



Item No	R&R Part No.	OEM Part No.	Description	Qty Req	Order Quantity
76	R116-3344	116-3344	Spindle Housing Assy	3	
77	R109-7124	109-7124	Spring - Extension	1	
81	R126-9196	126-9196	Idler Pulley - Flat	1	
82	R1-633456	1-633456	Bushing - Idler	2	
83	R116-4667	126-7685	Idler -Pulley - Flat	2	
84	R323-8	323-8	Bolt - Hex HD 3/8-16 x 1-1/2 GR8	1	
85	R126-2475-03	126-2475-03	Decklift - Front	1	
86	R116-0459-03	116-0459-03	Lift - Rear Deck	1	
87	R116-0797-03	116-0797-03	Link-Lift - Deck	1	
88	R116-0000	116-0000	Spring - Extension	1	
89	R32128-23	32128-23, 99-5107	Nut - Lock Hex Flanged 1/2-13	12	
90	R453022	3256-28	Washer - 3/4 SAE	2	
91	R116-0780	116-0780	Bolt - Hx HD Fl Shoulder	2	
93	R109-5013	109-5013	Panhard Rod Assy	1	
94	R109-5010	109-5010	Spacer	6	
95	R109-5009	109-5009	Bushing - Suspension - Rubber	6	
96	R325-12	325-12	Bolt - Hx HD	2	
97	R3233-34	3233-34	Carriage Bolt - 1/2-13 x 2 1/2 Grade 5	3	
98	R325-17	325-17	Bolt - Hex Head	1	
99	R92-7674	92-7674	Bolt - Shoulder	1	

All original equipment manufacturers names and part numbers are used for identification purposes only, and we are in no way implying that our products are original equipment parts. Prices subject to change without notice.



Replaces Exmark Lazer Z E-Series Parts

Zero-Turn Mower with 60in Deck - Model LZE740EKC60400,
LZE742GKC604A3, LZE742GKC604C1, LZE751CKA604A1,
LZE751GKA604A1, LZE751GKA604C1, LZE801GKA604C1,
LZE730GKA604A3, LZE730GKA604B3, LZE740EKC604A3
60in Deck



Item No	R&R Part No.	OEM Part No.	Description	Qty Req	Order Quantity
100	R109-9066	109-9066	Yoke - Adjust - Deck	4	
101	R32128-37	32128-37	Nut - 7-16-14 Hx Serr Fl	8	
102	RP457-2	3218-2	Nut - Jam 5/16-18 Zinc	4	

All original equipment manufacturers names and part numbers are used for identification purposes only, and we are in no way implying that our products are original equipment parts. Prices subject to change without notice.