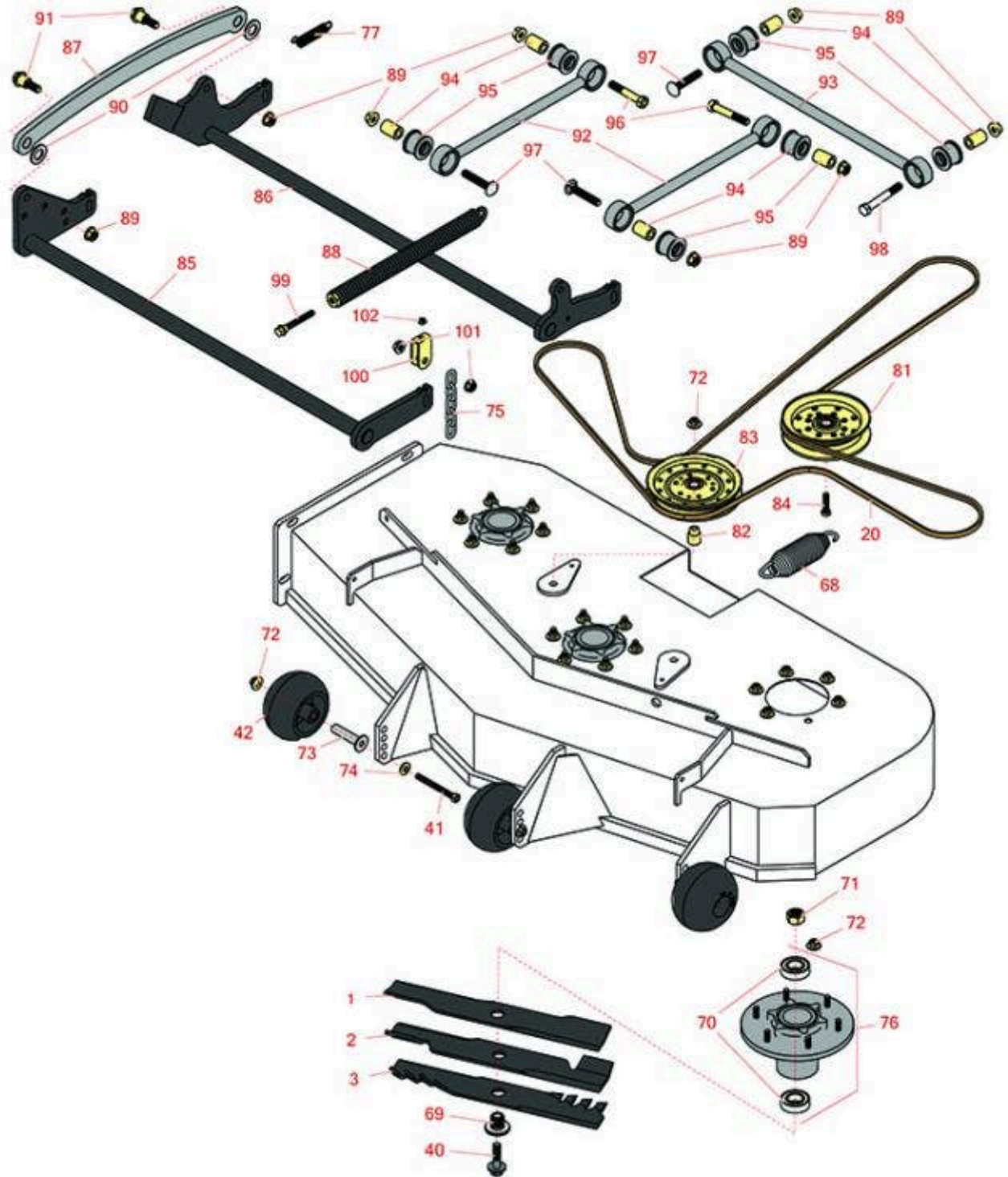




# Replaces Exmark Lazer Z E-Series Parts

Zero-Turn Mower with 48in Deck - Models LZE651CKA484A2,  
LZE651GKA484A2 & LZE600GKA484A2  
48in Deck



All original equipment manufacturers names and part numbers are used for identification purposes only, and we are in no way implying that our products are original equipment parts. Prices subject to change without notice.



# Replaces Exmark Lazer Z E-Series Parts

Zero-Turn Mower with 48in Deck - Models LZE651CKA484A2,  
LZE651GKA484A2 & LZE600GKA484A2  
48in Deck



| Item No            | R&R Part No.        | OEM Part No.            | Description   | Qty Req | Order Quantity |
|--------------------|---------------------|-------------------------|---|---------|----------------|
| <b>Blades</b>      |                     |                         |   |         |                |
| 1                  | <b>R103-6386</b>    | 103-6386                | Mower Blade - 16-1/4 Low Lift                         | 3       |                |
| 2                  | <b>R103-6401</b>    | 103-6401                | Mower Blade- Notched 16 1/4                           | 3       |                |
| 2                  | <b>RRB3062-1601</b> | 103-6401,<br>103-6401-S | Mower Blade - High-Lift 16.25 x 2.5in x 15/16 Mt Hole | 3       |                |
| 3                  | <b>RRB4062-1601</b> | 116-5177,<br>116-5177-S | Mower Blade - Mulcher 16.25 x 2.5in x 15/16 Mt Hole   | 3       |                |
| <b>Belts</b>       |                     |                         |   |         |                |
| 20                 | <b>R109-8070</b>    | 109-8070                | Belt- V   | 1       |                |
| <b>Other parts</b> |                     |                         |   |         |                |
| 40                 | <b>R109-9220</b>    | 109-9220                | Bolt - Sems 1/2-20                                    | 3       |                |
| 41                 | <b>R116-9362</b>    | 116-9362                | Bolt - Hex HD 3/8-16 x 3 3/4 GR8 YZ                   | 3       |                |
| 42                 | <b>R103-8415</b>    | 103-8415                | Roller - Anti Scalp                                   | 3       |                |
| 68                 | <b>R116-6317</b>    | 116-0133,<br>116-6317   | Spring - Extension                                    | 1       |                |
| 69                 | <b>R103-3037</b>    | 103-3037                | Splined Bushing                                       | 3       |                |
| 70                 | <b>R116-0720</b>    | 116-0720                | Bearing - Ball - Special Triple Seal                  | 6       |                |
| 71                 | <b>R116-7306</b>    | 116-7306                | Hex Nut - 3/4-16 with Nyloc                           | 3       |                |
| 72                 | <b>R104-8301</b>    | 104-8301,<br>109-6658   | Locknut - 3/8-16 Nylon Flanged                        | 31      |                |
| 73                 | <b>R116-8131</b>    | 116-8131                | Axle - Roller   | 3       |                |
| 74                 | <b>R98-5975</b>     | 98-5975                 | Washer - Belleville                                   | 3       |                |
| 75                 | <b>R1-633447</b>    | 1-633447                | Chain - Deck Lift                                     | 4       |                |

All original equipment manufacturers names and part numbers are used for identification purposes only, and we are in no way implying that our products are original equipment parts. Prices subject to change without notice.



## Replaces Exmark Lazer Z E-Series Parts

Zero-Turn Mower with 48in Deck - Models LZE651CKA484A2,  
LZE651GKA484A2 & LZE600GKA484A2  
48in Deck



| Item No | R&R Part No.        | OEM Part No.         | Description                            | Qty Req | Order Quantity |
|---------|---------------------|----------------------|--|---------|----------------|
| 76      | <b>R116-3344</b>    | 116-3344             | Spindle Housing Assy                   | 3       |                |
| 77      | <b>R109-7124</b>    | 109-7124             | Spring - Extension                     | 1       |                |
| 81      | <b>R126-9196</b>    | 126-9196             | Idler Pulley - Flat                    | 1       |                |
| 82      | <b>R1-633456</b>    | 1-633456             | Bushing - Idler                        | 2       |                |
| 83      | <b>R116-4667</b>    | 126-7685             | Idler -Pulley - Flat                   | 2       |                |
| 84      | <b>R323-8</b>       | 323-8                | Bolt - Hex HD 3/8-16 x 1-1/2 GR8       | 1       |                |
| 85      | <b>R126-2475-03</b> | 126-2475-03          | Decklift - Front                       | 1       |                |
| 86      | <b>R116-0459-03</b> | 116-0459-03          | Lift - Rear Deck                       | 1       |                |
| 87      | <b>R116-0797-03</b> | 116-0797-03          | Link-Lift - Deck                       | 1       |                |
| 88      | <b>R116-0886</b>    | 116-0886             | Spring - Extension                     | 1       |                |
| 89      | <b>R32128-23</b>    | 32128-23,<br>99-5107 | Nut - Lock Hex Flanged 1/2-13          | 12      |                |
| 90      | <b>R453022</b>      | 3256-28              | Washer - 3/4 SAE                       | 2       |                |
| 91      | <b>R116-0780</b>    | 116-0780             | Bolt - Hx HD Fl Shoulder               | 1       |                |
| 92      | <b>R109-7952</b>    | 109-7952             | Deck Strut Assy                        | 2       |                |
| 93      | <b>R109-5013</b>    | 109-5013             | Panhard Rod Assy                       | 1       |                |
| 94      | <b>R109-5010</b>    | 109-5010             | Spacer                                 | 6       |                |
| 95      | <b>R109-5009</b>    | 109-5009             | Bushing - Suspension - Rubber          | 6       |                |
| 96      | <b>R325-12</b>      | 325-12               | Bolt - Hx HD                           | 2       |                |
| 97      | <b>R3233-34</b>     | 3233-34              | Carriage Bolt - 1/2-13 x 2 1/2 Grade 5 | 3       |                |
| 98      | <b>R325-17</b>      | 325-17               | Bolt - Hex Head                        | 1       |                |
| 99      | <b>R92-7674</b>     | 92-7674              | Bolt - Shoulder                        | 1       |                |

All original equipment manufacturers names and part numbers are used for identification purposes only, and we are in no way implying that our products are original equipment parts. Prices subject to change without notice.



## Replaces Exmark Lazer Z E-Series Parts

Zero-Turn Mower with 48in Deck - Models LZE651CKA484A2,  
LZE651GKA484A2 & LZE600GKA484A2  
48in Deck



| Item No | R&R Part No.     | OEM Part No. | Description              | Qty Req | Order Quantity |
|---------|------------------|--------------|--------------------------|---------|----------------|
| 100     | <b>R109-9066</b> | 109-9066     | Yoke - Adjust - Deck     | 4       |                |
| 101     | <b>R32128-37</b> | 32128-37     | Nut - 7-16-14 Hx Serr Fl | 8       |                |
| 102     | <b>RP457-2</b>   | 3218-2       | Nut - Jam 5/16-18 Zinc   | 8       |                |

All original equipment manufacturers names and part numbers are used for identification purposes only, and we are in no way implying that our products are original equipment parts. Prices subject to change without notice.