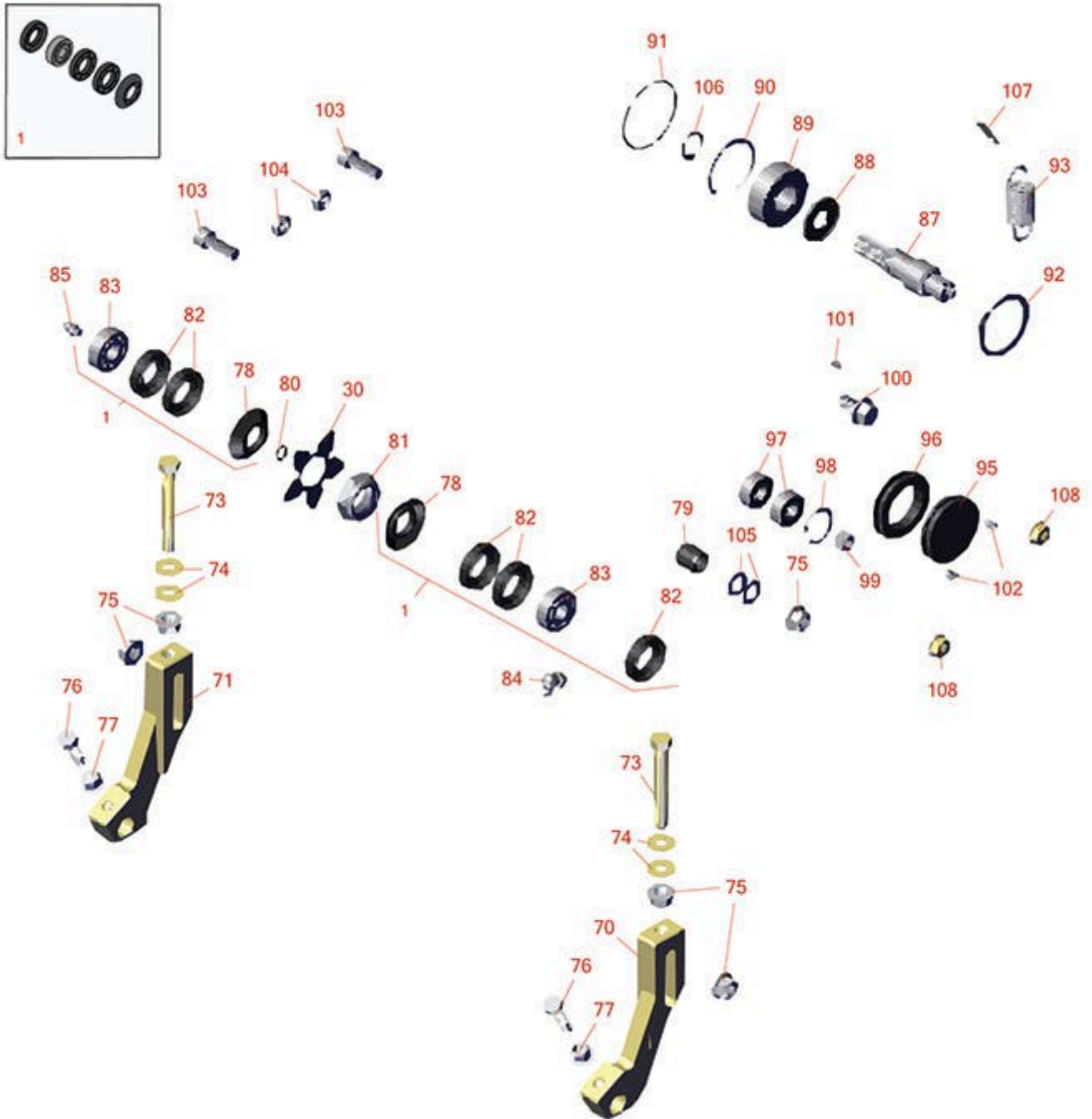




Replaces Toro Reelmaster 7000-D Parts

27in Cutting Unit - Models 03710 & 03711

Groomer - Models 03713 & 03714



All original equipment manufacturers names and part numbers are used for identification purposes only, and we are in no way implying that our products are original equipment parts. Prices subject to change without notice.



Replaces Toro Reelmaster 7000-D Parts

27in Cutting Unit - Models 03710 & 03711

Groomer - Models 03713 & 03714



Item No	R&R Part No.	OEM Part No.	Description	Qty Req	Order Quantity
---------	--------------	--------------	-------------	---------	----------------

Overhaul Kit

1	R110-4086	110-4086	Kit - Bearing	1	
---	------------------	----------	---------------	---	--

Tech Note: Includes 1 ea: R95-0707 Bearing, R108-4172 Seal; & 3 ea: R106-8530 Seal:

Blades

30	R112-6963	112-6963	Blade - Groomer	47	
----	------------------	----------	-----------------	----	--

30	R130-4105	130-4105	Blade- Groomer	47	
----	------------------	----------	----------------	----	--

Other Parts Available

70	R108-4213	108-4213	Bracket- HOC - LH - Groomer	1	
----	------------------	----------	-----------------------------	---	--

71	R108-4214	108-4214	Bracket-HOC - RH - Groomer	1	
----	------------------	----------	----------------------------	---	--

73	R112-7451	100-9429, 112-7451	Bolt - Hex Tap 3/8-16 x 2-3/4	2	
----	------------------	-----------------------	-------------------------------	---	--

74	R453011	01-166-0100, 01-166-0120, 01-166-0270, 01-166-0500, 01-166-0600, 01-166-0620, 132-4593, 2356-3, 237-12, 24-10-AD, 24-11-AD, 24-11-BD, 24-12-AD, 24-12-BD, 30-9310, 32-8190, 3256-24, 3256-3, 3256-36, 3256-4, 453011, 47-9950, 48-9220, 513458, 7-0052	Washer - Flat 3/8 SAE Y/Zinc	4	
----	----------------	--	------------------------------	---	--

All original equipment manufacturers names and part numbers are used for identification purposes only, and we are in no way implying that our products are original equipment parts. Prices subject to change without notice.



Replaces Toro Reelmaster 7000-D Parts

27in Cutting Unit - Models 03710 & 03711

Groomer - Models 03713 & 03714



Item No	R&R Part No.	OEM Part No.	Description	Qty Req	Order Quantity
75	R104-8301	104-8301, 104-9301, 109-6658, 133-7570	Locknut - 3/8-16 Nylon Flanged	6	
76	R322-16	322-16, Apr-00	Bolt - Hex HD 5/16-18 x 1-1/8	2	
77	R445722	30-8980, 32128-2, 32128-20, 32128-20, 445722	Nut - Serrated Washer	2	
78	R108-4172	108-4172	Seal - Excluder	2	
79	R108-4491	108-4491	Spacer - Hardened	1	
80	R237-22	107-8844, 237-22, 237-78	O-Ring	1	
81	R32127-46	32127-46, 3296-60	Locknut	2	
82	R106-8530	106-8530	Seal - Oil	5	
83	R95-0707	95-0707	Bearing - Self Aligning	2	
84	R700414	302-11, 302-19, 302-4, 32-8170	Zerk - Grease 1/4-28 45 Deg	1	

All original equipment manufacturers names and part numbers are used for identification purposes only, and we are in no way implying that our products are original equipment parts. Prices subject to change without notice.



Replaces Toro Reelmaster 7000-D Parts

27in Cutting Unit - Models 03710 & 03711

Groomer - Models 03713 & 03714



Item No	R&R Part No.	OEM Part No.	Description	Qty Req	Order Quantity
85	R302-5	21-6010, 302-11, 302-37, 302-47, 302-5, 302-57, 302-58, 302-6, 31-0300, 32-9660, 60-0800, 62-3880, 92-4181	Fitting - Grease	1	
87	R108-4234	108-4234	Shaft - Drive	1	
88	R107-7795	107-7795	Seal - Oil	1	
89	R93-2559	93-2559	Bearing	1	
90	R32120-62	32120-62	Ring - Retaining	1	
91	R112-6967	112-6967	O-Ring	1	
92	R32151-95	32151-90, 32151-95	Retaining Ring	1	
93	R110-1700	110-1700, 66-4460	Spring-Extension	1	
95	R105-5761	105-5761	Grommet	1	
96	R240-7	240-7	Grommet - Rubber - 2 in OD	1	
97	R110-1701	110-1701	Bearing	2	
98	R32151-60	32151-60	Ring - Snap	1	
99	R3296-47	3296-47	Locknut - 5/16-18 Jam Nyloc	1	
100	R110-1718	110-1718	Screw-HHF	1	
101	R95-9619	95-9619	Key - Square 1/8 x 1/8 x 5/16	1	

All original equipment manufacturers names and part numbers are used for identification purposes only, and we are in no way implying that our products are original equipment parts. Prices subject to change without notice.



Replaces Toro Reelmaster 7000-D Parts

27in Cutting Unit - Models 03710 & 03711

Groomer - Models 03713 & 03714



Item No	R&R Part No.	OEM Part No.	Description	Qty Req	Order Quantity
102	R415521	32-113-AHNC, 32137-1, 3246-2, 909862P	Screw - Set - 5/16-18 x 3/8	2	
103	R3274-7	3247-7, 3274-7	Bolt - Soc HD Cap 3/8-16 x 1	2	
104	R3296-59	3296-59	Locknut - 3/8-16 Nylon Jam	2	
105	R112-6957	112-6957	Washer - Hardened	2	
106	R458013	30-0580, 32120-72, 458013, 93-2525, 936125	Ring - Retaining	1	
107	R104-4754	104-4754	Spring-Detent	2	
108	R104-8300	104-8300, 104-8300 , 119-4041	Locknut - 5/16-18 Flanged Y/Zinc	4	

All original equipment manufacturers names and part numbers are used for identification purposes only, and we are in no way implying that our products are original equipment parts. Prices subject to change without notice.