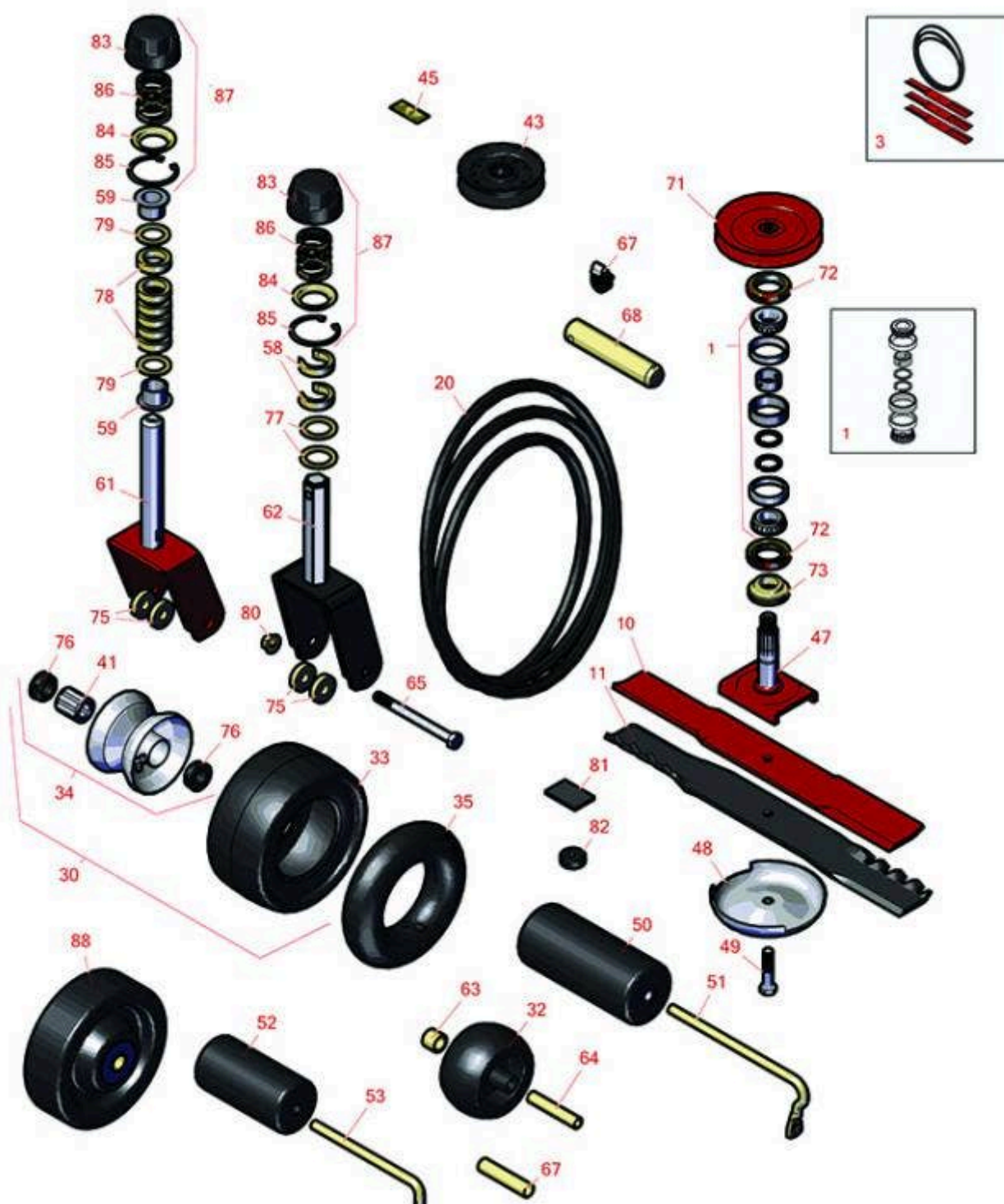




# Replaces Toro Groundsmaster 228-D Parts

Rotary Mower - Models 2WD 30241 & 4WD 30242  
62in Rotary Deck - Model 30551



All original equipment manufacturers names and part numbers are used for identification purposes only, and we are in no way implying that our products are original equipment parts. Prices subject to change without notice.



# Replaces Toro Groundsmaster 228-D Parts

Rotary Mower - Models 2WD 30241 & 4WD 30242  
62in Rotary Deck - Model 30551



| Item No | R&R Part No. | OEM Part No. | Description | Qty Req | Order Quantity |
|---------|--------------|--------------|-------------|---------|----------------|
|---------|--------------|--------------|-------------|---------|----------------|

## Overhaul Kits

|   |                 |                     |                                  |   |  |
|---|-----------------|---------------------|----------------------------------|---|--|
| 1 | <b>R46-8530</b> | 27-0960,<br>46-8530 | Bearing - Set with Rings/Spacers | 1 |  |
|---|-----------------|---------------------|----------------------------------|---|--|

*Detail Description: Includes 2 ea: R254-72 Bearings, R254-94 Cones, Spacers & Rings:*

|   |                 |         |                      |   |  |
|---|-----------------|---------|----------------------|---|--|
| 3 | <b>R95-3071</b> | 95-3071 | Kit - Blade and Belt | 1 |  |
|---|-----------------|---------|----------------------|---|--|

*Detail Description: Includes 3 ea: R44-6250-03 Rotary Blade; 1 ea: R44-6260 Deck Belt:*

## Rotary Blades

|    |                 |                        |             |   |  |
|----|-----------------|------------------------|-------------|---|--|
| 10 | <b>R44-6250</b> | 44-6250,<br>44-6250-03 | Mower Blade | 3 |  |
|----|-----------------|------------------------|-------------|---|--|

|    |                     |  |   |   |  |
|----|---------------------|--|---|---|--|
| 11 | <b>RRB4045-2102</b> | 104-1303,<br>107-0214,<br>107-0214-03,<br>92-5608M | Mower Blade - Mulcher 21.75 x 2.5in x 1/2 Mt Hole | 3 |  |
|----|---------------------|--|---|---|--|

|    |                  |                                       |   |   |  |
|----|------------------|---------------------------------------|---|---|--|
| 11 | <b>R92-5608M</b> | 104-1303,<br>107-0214-03,<br>92-5608M | Mower Blade - Mulcher 21.75 x 2.5in x 1/2 Mt Hole | 0 |  |
|----|------------------|---------------------------------------|---|---|--|

## Belts

|    |                 |         |             |   |  |
|----|-----------------|---------|-------------|---|--|
| 20 | <b>R44-6260</b> | 44-6260 | Belt - Deck | 1 |  |
|----|-----------------|---------|-------------|---|--|

## Tires & Wheels

|    |                 |         |                                  |   |  |
|----|-----------------|---------|----------------------------------|---|--|
| 30 | <b>R99-1268</b> | 99-1268 | Castor Wheel Assy 8x3.5-4 Smooth | 2 |  |
|----|-----------------|---------|----------------------------------|---|--|

*Detail Description: Includes: R62-5580 Bearing & R62-5570 Bearing:*

|    |                 |                      |                    |   |  |
|----|-----------------|----------------------|--------------------|---|--|
| 32 | <b>R68-2730</b> | 1-603299,<br>68-2730 | Wheel - Anti Scalp | 1 |  |
|----|-----------------|----------------------|--------------------|---|--|

|    |                 |                     |                                 |   |  |
|----|-----------------|---------------------|---------------------------------|---|--|
| 33 | <b>R93-9939</b> | 93-9939,<br>98-2877 | Tire - 8x3.50-4 (4 Ply) Sm Pneu | 1 |  |
|----|-----------------|---------------------|---------------------------------|---|--|

|    |                  |          |                        |   |  |
|----|------------------|----------|------------------------|---|--|
| 34 | <b>R100-2348</b> | 100-2348 | Rim Assy with Bearings | 1 |  |
|----|------------------|----------|------------------------|---|--|

*Detail Description: Includes 2ea R62-5580 Bearings & 1 ea R62-5570 Bearing.:*

All original equipment manufacturers names and part numbers are used for identification purposes only, and we are in no way implying that our products are original equipment parts. Prices subject to change without notice.



# Replaces Toro Groundsmaster 228-D Parts

Rotary Mower - Models 2WD 30241 & 4WD 30242  
62in Rotary Deck - Model 30551



| Item No | R&R Part No.     | OEM Part No. | Description                     | Qty Req | Order Quantity |
|---------|------------------|--------------|---------------------------------|---------|----------------|
| 35      | <b>R100-5832</b> | 100-5832     | Tube - Castor Wheel 2.80/2.50-4 | 1       |                |

## Other Parts Available

|                          |                    |   |                              |    |  |
|--------------------------|--------------------|---|------------------------------|----|--|
| 41                       | <b>R62-5570</b>    | 62-5570                                     | Bearing - Castor Wheel       | 1  |  |
| 43                       | <b>R65-5940</b>    | 65-5940                                     | Pulley - Idler               | 2  |  |
| 45                       | <b>R93-6696</b>    | 93-6696                                     | Decal - Warning              | 2  |  |
| 47                       | <b>R27-0920</b>    | 27-0920                                     | Spindle - Splined - 4-5/8 in | 1  |  |
| 48                       | <b>R72-9361</b>    | 27-1000,<br>27-1001,<br>72-9360,<br>72-9361 | Cup - Anti-Scalp             | 1  |  |
| 49                       | <b>R92-5816</b>    | 92-5816                                     | Bolt - Hex HD 1/2-20 x 2-1/4 | 1  |  |
| 50                       | <b>R68-6710</b>    | 68-6710                                     | Roller - Rotary Deck         | 1  |  |
| 51                       | <b>R68-6840</b>    | 68-6840                                     | Shaft - Roller               | 1  |  |
| 52                       | <b>R36-1740</b>    | 36-1740                                     | Roller - Rotary Deck         | 1  |  |
| 53                       | <b>R40-0340</b>    | 40-0340                                     | Shaft - Rear Roller          | 2  |  |
| 58                       | <b>R92-8866</b>    | 92-1764,<br>92-8866                         | Spacer - Castor Fork         | 12 |  |
| 59                       | <b>R94-1291</b>    | 94-1291                                     | Bushing - Flanged            | 4  |  |
| 61                       | <b>R98-7921-01</b> | 98-7921,<br>98-7921-01                      | Caster Fork - Front          | 2  |  |
| <i>Tech Note: Front:</i> |                    |   |                              |    |  |
| 62                       | <b>R92-5578-01</b> | 92-5578,<br>92-5578-01                      | Caster Fork - Rear           | 2  |  |
| 63                       | <b>R98-7913</b>    | 98-7913                                     | Spacer - Tube                | 1  |  |
| 64                       | <b>R98-7912</b>    | 98-7912                                     | Bushing - Spanner Wheel      | 1  |  |

All original equipment manufacturers names and part numbers are used for identification purposes only, and we are in no way implying that our products are original equipment parts. Prices subject to change without notice.



# Replaces Toro Groundsmaster 228-D Parts

Rotary Mower - Models 2WD 30241 & 4WD 30242  
62in Rotary Deck - Model 30551



| Item No | R&R Part No. | OEM Part No.                                      | Description                    | Qty Req | Order Quantity |
|---------|--------------|---|--------------------------------|---------|----------------|
| 65      | R325-22      | 01-150-0650,<br>01-178-0844,<br>325-21,<br>325-22 | Bolt - Hx HD 1/2-13 x 5 1/2    | 4       |                |
| 67      | R68-8980     | 68-8980   | Bushing - Spanner Wheel        | 2       |                |
| 68      | R98-2330     | 98-2330   | Pin - Pivot Assy               | 2       |                |
| 71      | R44-6340     | 44-6340,<br>44-6340-03                            | Pulley - Splined 62 Deck       | 1       |                |
| 72      | R253-139     | 253-139   | Seal - Spindle                 | 2       |                |
| 73      | R27-0950     | 27-0950   | Spacer - Bearing               | 1       |                |
| 75      | R99-1291     | 99-1291   | Spacer - Castor Fork           | 4       |                |
| 76      | R62-5580     | 62-5530,<br>62-5580                               | Bearing - Flanged - Caster     | 2       |                |
| 77      | R92-1765     | 92-1765   | Washer - Thrust                | 4       |                |
| 78      | R63-0070     | 26-1580,<br>63-0070                               | Spacer - 1/2 HOC               | 12      |                |
| 79      | R3-6781      | 3-6781  | Washer - Thrust - Castor Wheel | 4       |                |
| 80      | R32128-23    | 32128-23,<br>3218-23,<br>99-5107                  | Nut - Lock Hex Flanged 1/2-13  | 4       |                |
| 81      | R74-0340     | 54-2700,<br>74-0340                               | Cushion - Rubber               | 2       |                |
| 82      | R63-9750     | 63-9750,<br>64-9750                               | Mount - Rubber                 | 4       |                |
| 83      | R92-8861     | 92-5582,<br>92-8861                               | Cap - HOC                      | 4       |                |
| 84      | R92-5583     | 92-5583   | Washer- Cap                    | 4       |                |
| 85      | R92-5581     | 92-5581   | Ring - Retaining               | 4       |                |

All original equipment manufacturers names and part numbers are used for identification purposes only, and we are in no way implying that our products are original equipment parts. Prices subject to change without notice.



## Replaces Toro Groundsmaster 228-D Parts



*Rotary Mower - Models 2WD 30241 & 4WD 30242  
62in Rotary Deck - Model 30551*

| Item No | R&R Part No.    | OEM Part No.        | Description          | Qty Req | Order Quantity |
|---------|-----------------|---------------------|----------------------|---------|----------------|
| 86      | <b>R92-5584</b> | 92-5584             | Spring - Compression | 4       |                |
| 87      | <b>R92-8862</b> | 92-8862             | Cap Assy - HOC       | 4       |                |
| 88      | <b>R27-1050</b> | 27-1050,<br>46-8230 | Wheel Assy           | 2       |                |

All original equipment manufacturers names and part numbers are used for identification purposes only, and we are in no way implying that our products are original equipment parts. Prices subject to change without notice.