

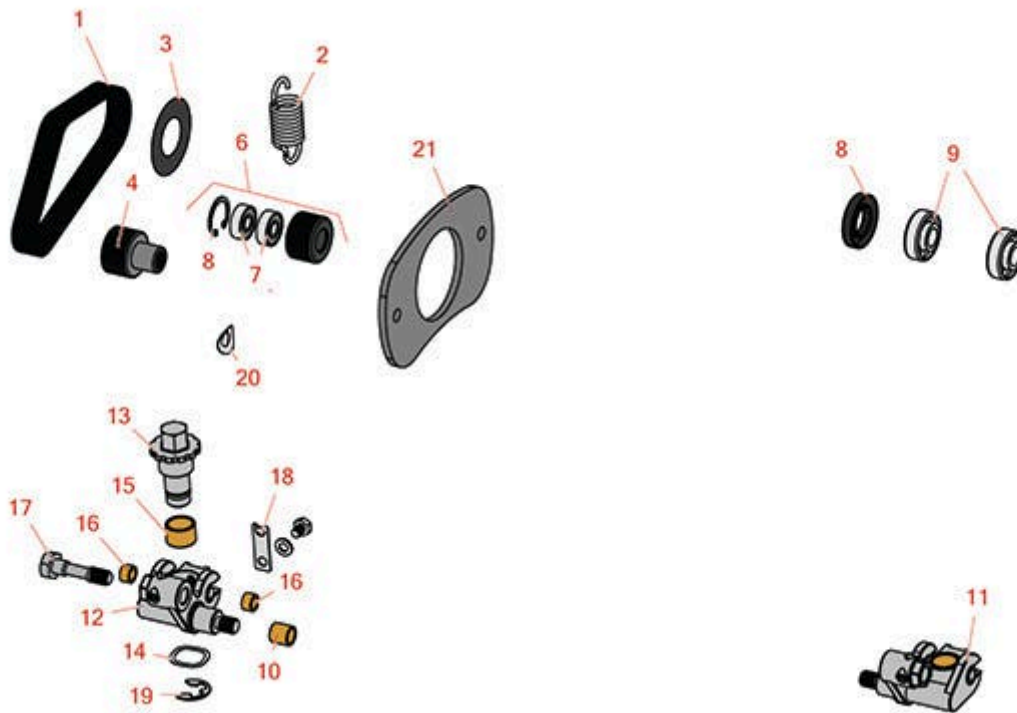


# Replaces Toro Greensmaster eFlex 1820 Parts



DPA Cutting Unit - Models 04289 & 04291

Groomer Drive - Forward-Rotating Model 04259



All original equipment manufacturers names and part numbers are used for identification purposes only, and we are in no way implying that our products are original equipment parts. Prices subject to change without notice.



# Replaces Toro Greensmaster eFlex 1820 Parts



*DPA Cutting Unit - Models 04289 & 04291  
Groomer Drive - Forward-Rotating Model 04259*

Item No	R&R Part No.	OEM Part No.	Description	Qty Req	Order Quantity
<b>Belts</b>					
1	<b>R104-4705</b>	104-4705, 120-2763	Belt - Groomer	1	
<b>Other Parts Available</b>					
2	<b>R110-1700</b>	110-1700, 66-4460	Spring-Extension	1	
3	<b>R106-8521</b>	106-8521	Decal-Warning	1	
4	<b>R115-5219</b>	115-5219	Pulley-Driven, Splined	1	
6	<b>R106-2630</b>	106-2630	Idler Bearing Assy	1	
7	<b>R251-259</b>	251-259, 251-307	Bearing - Ball	2	
8	<b>R106-8530</b>	106-8530	Seal - Oil	1	
9	<b>R107-8105</b>	106-8520, 107-8105	Bearing-Ball - Extended	1	
10	<b>R256-2</b>	256-2	Bushing - Idler Pulley	2	
11	<b>R106-8536</b>	106-8536	LH Lift Arm Assy	1	
12	<b>R106-8535</b>	106-8535	RH Lift Arm Assy	1	
13	<b>R106-8482</b>	106-8482	Adjuster-Groomer	2	
14	<b>R107-8107</b>	106-8490, 107-8107	Washer - Wave	2	
15	<b>R256-42</b>	256-42	Bushing	2	
16	<b>R106-8489</b>	106-8489	Bushing-Sleeve	2	
17	<b>R106-8528</b>	106-8528	Screw - Lock	2	
18	<b>R104-4754</b>	104-4754	Spring-Detent	2	

All original equipment manufacturers names and part numbers are used for identification purposes only, and we are in no way implying that our products are original equipment parts. Prices subject to change without notice.



# Replaces Toro Greensmaster eFlex 1820 Parts



*DPA Cutting Unit - Models 04289 & 04291*

*Groomer Drive - Forward-Rotating Model 04259*

Item No	R&R Part No.	OEM Part No.	Description	Qty Req	Order Quantity
19	<b>R32120-19</b>	32120-19, 32120-81	E-Ring	2	
20	<b>R121-4605</b>	121-4506, 121-4605	Washer - Spring - Curved	2	
21	<b>R106-8463</b>	106-8463	Shim-Groomer	1	

All original equipment manufacturers names and part numbers are used for identification purposes only, and we are in no way implying that our products are original equipment parts. Prices subject to change without notice.