

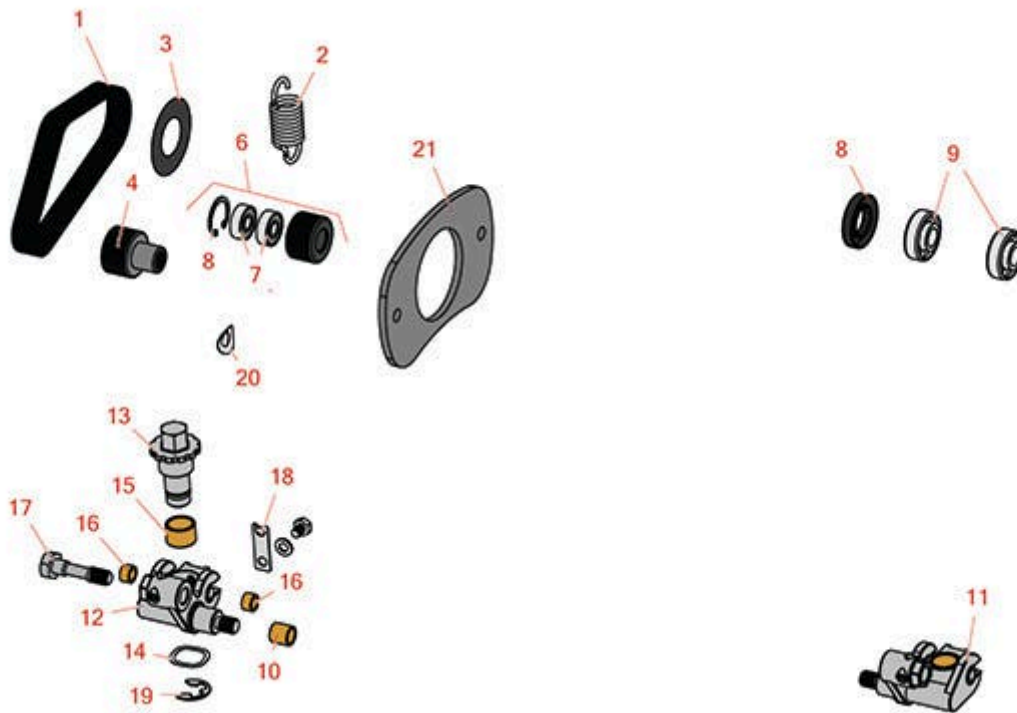


Replaces Toro Greensmaster Flex 1800 Parts



DPA Cutting Unit - Model 04253 & 04254

Groomer Drive - Forward-Rotating Model 04259



All original equipment manufacturers names and part numbers are used for identification purposes only, and we are in no way implying that our products are original equipment parts. Prices subject to change without notice.



Replaces Toro Greensmaster Flex 1800 Parts



*DPA Cutting Unit - Model 04253 & 04254
Groomer Drive - Forward-Rotating Model 04259*

| Item No | R&R Part No. | OEM Part No. | Description | Qty Req | Order Quantity |
|------------------------------|------------------|-----------------------|-------------------------|---------|----------------|
| Belts | | | | | |
| 1 | R104-4705 | 104-4705, 120-2763 | Belt - Groomer | 1 | |
| Other Parts Available | | | | | |
| 2 | R110-1700 | 110-1700, 66-4460 | Spring-Extension | 1 | |
| 3 | R106-8521 | 106-8521 | Decal-Warning | 1 | |
| 4 | R115-5219 | 115-5219 | Pulley-Driven, Splined | 1 | |
| 6 | R106-2630 | 106-2630 | Idler Bearing Assy | 1 | |
| 7 | R251-259 | 251-259, 251-307 | Bearing - Ball | 2 | |
| 8 | R106-8530 | 106-8530 | Seal - Oil | 1 | |
| 9 | R107-8105 | 106-8520, 107-8105 | Bearing-Ball - Extended | 1 | |
| 10 | R256-2 | 256-2 | Bushing - Idler Pulley | 2 | |
| 11 | R106-8536 | 106-8536 | LH Lift Arm Assy | 1 | |
| 12 | R106-8535 | 106-8535 | RH Lift Arm Assy | 1 | |
| 13 | R106-8482 | 106-8482 | Adjuster-Groomer | 2 | |
| 14 | R107-8107 | 106-8490, 107-8107 | Washer - Wave | 2 | |
| 15 | R256-42 | 256-42 | Bushing | 2 | |
| 16 | R106-8489 | 106-8489 | Bushing-Sleeve | 2 | |
| 17 | R106-8528 | 106-8528 | Screw - Lock | 2 | |
| 18 | R104-4754 | 104-4754 | Spring-Detent | 2 | |

All original equipment manufacturers names and part numbers are used for identification purposes only, and we are in no way implying that our products are original equipment parts. Prices subject to change without notice.



Replaces Toro Greensmaster Flex 1800 Parts



DPA Cutting Unit - Model 04253 & 04254

Groomer Drive - Forward-Rotating Model 04259

| Item No | R&R Part No. | OEM Part No. | Description | Qty Req | Order Quantity |
|---------|------------------|-----------------------|--------------------------|---------|----------------|
| 19 | R32120-19 | 32120-19, 32120-81 | E-Ring | 2 | |
| 20 | R121-4605 | 121-4506, 121-4605 | Washer - Spring - Curved | 2 | |
| 21 | R106-8463 | 106-8463 | Shim-Groomer | 1 | |

All original equipment manufacturers names and part numbers are used for identification purposes only, and we are in no way implying that our products are original equipment parts. Prices subject to change without notice.