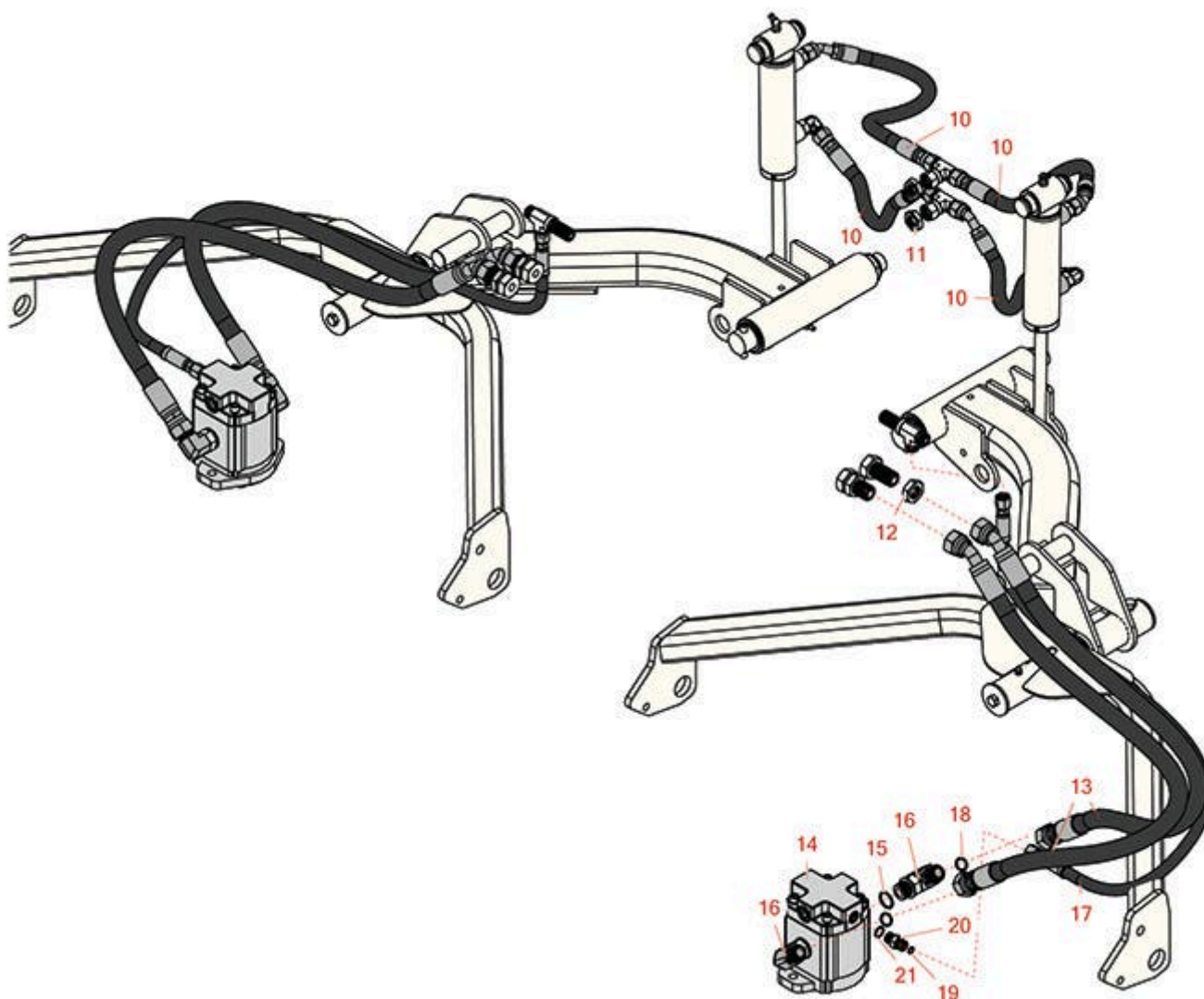




Replaces Toro Groundsmaster 4500-D Parts

*Traction Unit - Model 30873
Rear Lift Arm Hydraulics*



All original equipment manufacturers names and part numbers are used for identification purposes only, and we are in no way implying that our products are original equipment parts. Prices subject to change without notice.



Replaces Toro Groundsmaster 4500-D Parts

*Traction Unit - Model 30873
Rear Lift Arm Hydraulics*



| Item No | R&R Part No. | OEM Part No. | Description | Qty Req | Order Quantity |
|---------|--------------|--------------|-------------|---------|----------------|
|---------|--------------|--------------|-------------|---------|----------------|

Hoses

| | | | | | |
|----|------------------|----------|---------------------|---|--|
| 10 | R105-9238 | 105-9238 | Hydraulic Hose Assy | 4 | |
| 13 | R104-5505 | 104-5505 | Hydraulic Hose Assy | 4 | |
| 17 | R104-5502 | 104-5502 | Hydraulic Hose Assy | 2 | |

Other Parts Available

| | | | | | |
|----|------------------|---|----------------------------------|---|--|
| 11 | R340-70 | 340-70 | Nut - Lock | 2 | |
| 12 | R340-74 | 340-74 | Locknut - Bulkhead | 4 | |
| 14 | R117-5141 | 105-9820, 105-9872, 117-5141, 137-5571 | Hydraulic Motor | 2 | |
| 15 | R237-80 | 237-80, 327-80 | O-Ring | 4 | |
| 16 | R340-17 | 340-17 | No 10 Male Orfs x No 10 Male Orb | 4 | |
| 18 | R237-65 | 237-65, 237.65 | O-Ring | 4 | |
| 19 | R237-21 | 237-21, 327-21 | O-Ring | 2 | |
| 20 | R340-92 | 340-92 | Hydraulic Fitting - Striaight | 2 | |
| 21 | R237-22 | 107-8844, 237-22, 237-78 | O-Ring | 2 | |

All original equipment manufacturers names and part numbers are used for identification purposes only, and we are in no way implying that our products are original equipment parts. Prices subject to change without notice.