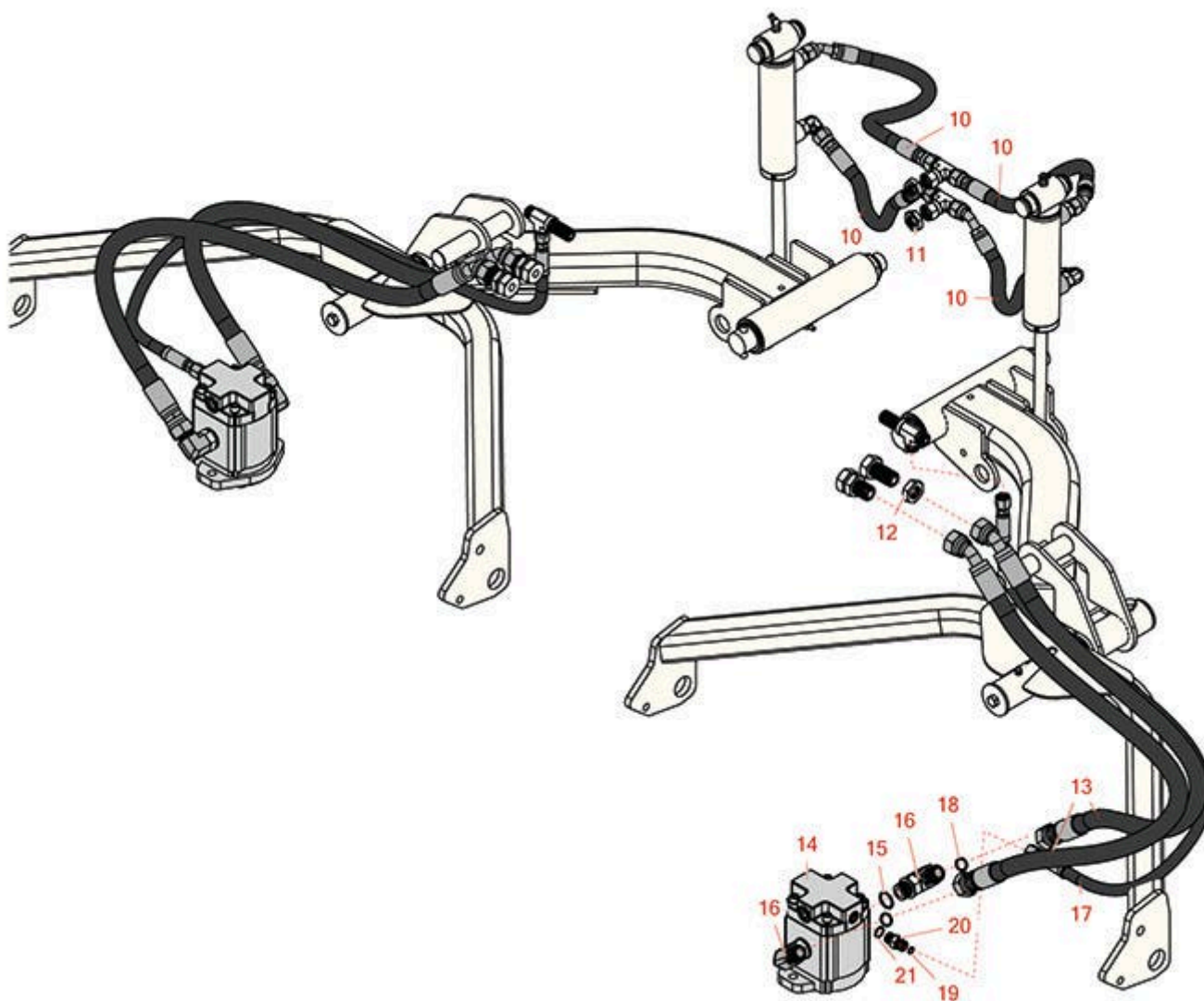




# Replaces Toro Groundsmaster 4500-D Parts

*Rotary Mower - Model 30856  
Rear Lift Arm Hydraulics*



All original equipment manufacturers names and part numbers are used for identification purposes only, and we are in no way implying that our products are original equipment parts. Prices subject to change without notice.



# Replaces Toro Groundsmaster 4500-D Parts

Rotary Mower - Model 30856  
Rear Lift Arm Hydraulics



Item No	R&R Part No.	OEM Part No.	Description	Qty Req	Order Quantity
---------	--------------	--------------	-------------	---------	----------------

## Hoses

10	<b>R105-9238</b>	105-9238	Hydraulic Hose Assy	4	
13	<b>R104-5505</b>	104-5505	Hydraulic Hose Assy	4	
17	<b>R104-5502</b>	104-5502	Hydraulic Hose Assy	2	

## Other Parts Available

11	<b>R340-70</b>	340-70	Nut - Lock	2	
12	<b>R340-74</b>	340-74	Locknut - Bulkhead	4	
14	<b>R117-5141</b>	105-9820, 105-9872, 117-5141, 137-5571	Hydraulic Motor	2	
15	<b>R237-80</b>	237-80, 327-80	O-Ring	4	
16	<b>R340-17</b>	340-17	No 10 Male Orfs x No 10 Male Orb	4	
18	<b>R237-65</b>	237-65, 237.65	O-Ring	4	
19	<b>R237-21</b>	237-21, 327-21	O-Ring	2	
20	<b>R340-92</b>	340-92	Hydraulic Fitting - Striaght	2	
21	<b>R237-22</b>	107-8844, 237-22, 237-78	O-Ring	2	

All original equipment manufacturers names and part numbers are used for identification purposes only, and we are in no way implying that our products are original equipment parts. Prices subject to change without notice.