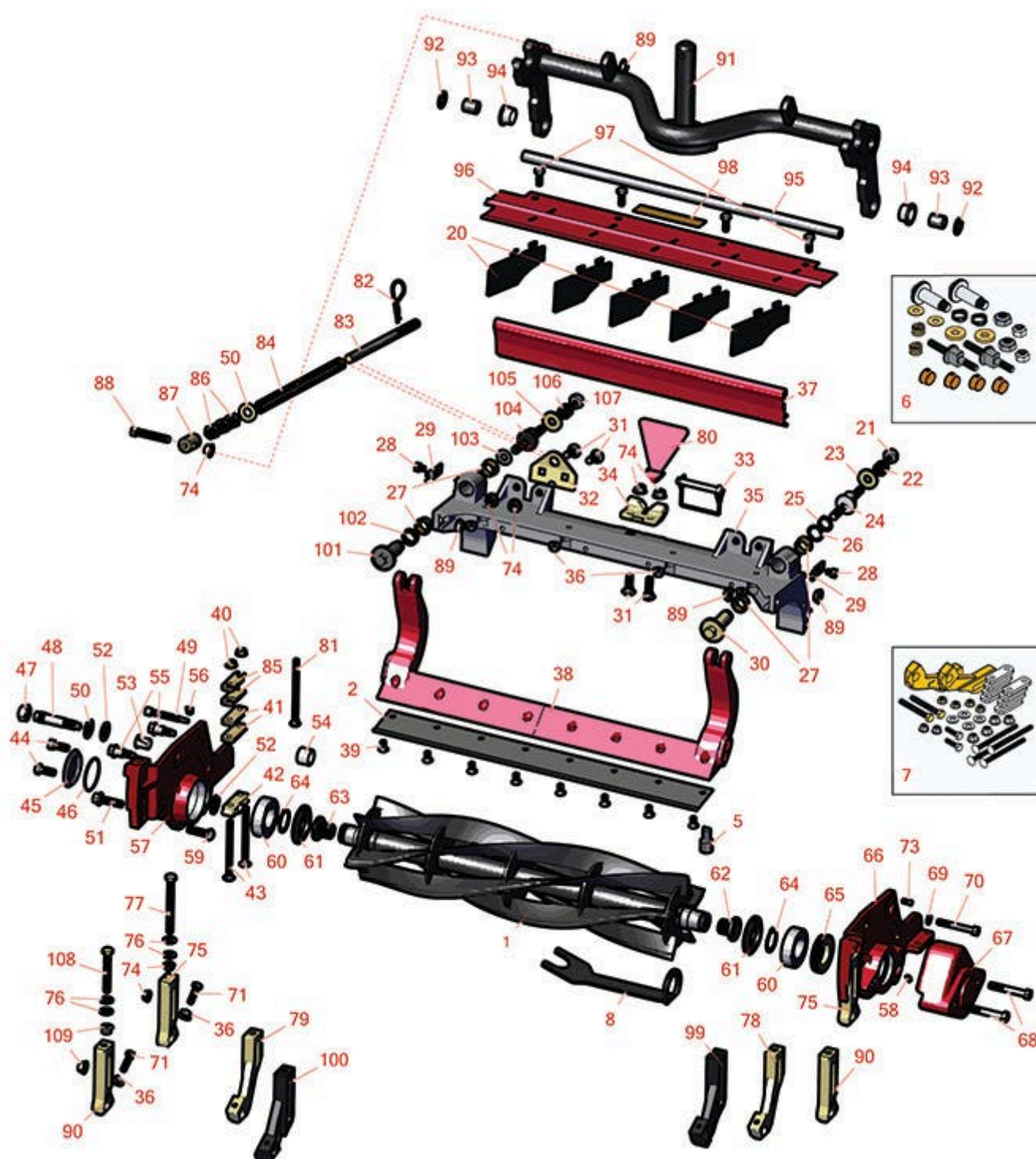




# Replaces Toro Reelmaster 5410G Parts

DPA Cutting Unit with 5" Reel - Model 03694 & 03695  
Reel & Bedknife



All original equipment manufacturers names and part numbers are used for identification purposes only, and we are in no way implying that our products are original equipment parts. Prices subject to change without notice.



## Replaces Toro Reelmaster 5410G Parts

DPA Cutting Unit with 5" Reel - Model 03694 & 03695  
Reel & Bedknife



| Item No | R&R Part No. | OEM Part No. | Description | Qty Req | Order Quantity |
|---------|--------------|--------------|-------------|---------|----------------|
|---------|--------------|--------------|-------------|---------|----------------|

### R&R Reels, Lifetime Guaranteed

|   |                  |          |                     |   |  |
|---|------------------|----------|---------------------|---|--|
| 1 | <b>R108-9070</b> | 108-9070 | Reel - 5 Blade 22x5 | 1 |  |
|---|------------------|----------|---------------------|---|--|

*Detail Description: R&R Reel blades are manufactured from high carbon-boron alloy steel and then hardened to RC46-49 to match the temper of our bedknives and original equipment bedknives. All R&R Reels are cylindrically ground on bearing surfaces and then relief ground. Reels are then precision computer balanced for extended bearing and reel life. R&R Products Reels are guaranteed against defects in material and workmanship for the life of the reel under normal use.:*

|   |                  |          |                            |   |  |
|---|------------------|----------|----------------------------|---|--|
| 1 | <b>R127-2070</b> | 127-2070 | Reel - 5 Blade Radial 22x5 | 1 |  |
|---|------------------|----------|----------------------------|---|--|

*Detail Description: R&R Reel blades are manufactured from high carbon-boron alloy steel and then hardened to RC46-49 to match the temper of our bedknives and original equipment bedknives. All R&R Reels are cylindrically ground on bearing surfaces and then relief ground. Reels are then precision computer balanced for extended bearing and reel life. R&R Products Reels are guaranteed against defects in material and workmanship for the life of the reel under normal use.:*

|   |                  |          |   |   |  |
|---|------------------|----------|---|---|--|
| 1 | <b>R137-8421</b> | 137-8421 | Reel - 5 Blade Razor Series w/Bearings and Seals 22x5 | 1 |  |
|---|------------------|----------|---|---|--|

*Detail Description: R&R Razor Reels are manufactured from a special high alloy steel and then hardened to RC48-51 to match the temper of our Razor bedknives and original equipment premium series bedknives. All R&R Reels are cylindrically ground on bearing surfaces, relief ground and precision computer balanced for extended bearing and reel life. R&R Products Reels are guaranteed against defects in material and workmanship for the life of the reel under normal use. You can expect up to double the life from Razor reels over standard reels.:*

|   |                  |          |                     |   |  |
|---|------------------|----------|---------------------|---|--|
| 1 | <b>R108-9071</b> | 108-9071 | Reel - 8 Blade 22x5 | 1 |  |
|---|------------------|----------|---------------------|---|--|

*Detail Description: R&R Reel blades are manufactured from high carbon-boron alloy steel and then hardened to RC46-49 to match the temper of our bedknives and original equipment bedknives. All R&R Reels are cylindrically ground on bearing surfaces and then relief ground. Reels are then precision computer balanced for extended bearing and reel life. R&R Products Reels are guaranteed against defects in material and workmanship for the life of the reel under normal use.:*

|   |                  |          |                            |   |  |
|---|------------------|----------|----------------------------|---|--|
| 1 | <b>R127-2065</b> | 127-2065 | Reel - 8 Blade Radial 22x5 | 1 |  |
|---|------------------|----------|----------------------------|---|--|

All original equipment manufacturers names and part numbers are used for identification purposes only, and we are in no way implying that our products are original equipment parts. Prices subject to change without notice.



## Replaces Toro Reelmaster 5410G Parts

DPA Cutting Unit with 5" Reel - Model 03694 & 03695  
Reel & Bedknife



| Item No | R&R Part No. | OEM Part No. | Description | Qty Req | Order Quantity |
|---------|--------------|--------------|-------------|---------|----------------|
|---------|--------------|--------------|-------------|---------|----------------|

*Detail Description:* R&R Reel blades are manufactured from high carbon-boron alloy steel and then hardened to RC46-49 to match the temper of our bedknives and original equipment bedknives. All R&R Reels are cylindrically ground on bearing surfaces and then relief ground. Reels are then precision computer balanced for extended bearing and reel life. R&R Products Reels are guaranteed against defects in material and workmanship for the life of the reel under normal use.:

|   |                  |          |  |   |  |
|---|------------------|----------|--|---|--|
| 1 | <b>R133-8201</b> | 133-8201 | Reel - 8 Blade Razor Series<br>Radial 22x5 | 1 |  |
|---|------------------|----------|--|---|--|

*Detail Description:* R&R Razor Reels are manufactured from a special high alloy steel and then hardened to RC48-51 to match the temper of our Razor bedknives and original equipment premium series bedknives. All R&R Reels are cylindrically ground on bearing surfaces, relief ground and precision computer balanced for extended bearing and reel life. R&R Products Reels are guaranteed against defects in material and workmanship for the life of the reel under normal use. You can expect up to double the life from Razor reels over standard reels.:

|   |                  |          |  |   |  |
|---|------------------|----------|--|---|--|
| 1 | <b>R137-8422</b> | 137-8422 | Reel - 8 Blade Razor Series<br>Radial w/Bearings and Seals<br>22x5 | 1 |  |
|---|------------------|----------|--|---|--|

*Detail Description:* R&R Razor Reels are manufactured from a special high alloy steel and then hardened to RC48-51 to match the temper of our Razor bedknives and original equipment premium series bedknives. All R&R Reels are cylindrically ground on bearing surfaces, relief ground and precision computer balanced for extended bearing and reel life. R&R Products Reels are guaranteed against defects in material and workmanship for the life of the reel under normal use. You can expect up to double the life from Razor reels over standard reels.:

|   |                  |          |  |   |  |
|---|------------------|----------|--|---|--|
| 1 | <b>R137-8417</b> | 137-8417 | Reel - 11 Blade w/Bearings<br>and Seals 22x5 | 1 |  |
|---|------------------|----------|--|---|--|

*Detail Description:* R&R Reel blades are expertly crafted from premium high carbon-boron alloy steel, heat-treated to perfectly complement both R&R and OEM bedknives. Each reel undergoes precision cylindrical grinding on bearing surfaces, followed by relief grinding for optimal performance. Advanced computer balancing ensures extended reel and bearing life. Backed by our lifetime guarantee against defects in materials and craftsmanship under normal use, R&R Reels deliver unmatched durability and cutting precision you can trust.:

|   |                  |                       |                             |   |  |
|---|------------------|-----------------------|-----------------------------|---|--|
| 1 | <b>R127-2066</b> | 117-3793,<br>127-2066 | Reel - 11 Blade Radial 22x5 | 1 |  |
|---|------------------|-----------------------|-----------------------------|---|--|

All original equipment manufacturers names and part numbers are used for identification purposes only, and we are in no way implying that our products are original equipment parts. Prices subject to change without notice.



## Replaces Toro Reelmaster 5410G Parts

DPA Cutting Unit with 5" Reel - Model 03694 & 03695  
Reel & Bedknife



| Item No | R&R Part No. | OEM Part No. | Description | Qty Req | Order Quantity |
|---------|--------------|--------------|-------------|---------|----------------|
|---------|--------------|--------------|-------------|---------|----------------|

*Detail Description:* R&R Reel blades are manufactured from high carbon-boron alloy steel and then hardened to RC46-49 to match the temper of our bedknives and original equipment bedknives. All R&R Reels are cylindrically ground on bearing surfaces and then relief ground. Reels are then precision computer balanced for extended bearing and reel life. R&R Products Reels are guaranteed against defects in material and workmanship for the life of the reel under normal use.:

|   |                  |          |  |   |  |
|---|------------------|----------|--|---|--|
| 1 | <b>R133-8203</b> | 133-8203 | Reel - 11 Blade Razor Series<br>Forward Swept 22x5 | 1 |  |
|---|------------------|----------|--|---|--|

*Detail Description:* R&R Razor Reels are manufactured from a special high alloy steel and then hardened to RC48-51 to match the temper of our Razor bedknives and original equipment premium series bedknives. All R&R Reels are cylindrically ground on bearing surfaces, relief ground and precision computer balanced for extended bearing and reel life. R&R Products Reels are guaranteed against defects in material and workmanship for the life of the reel under normal use. You can expect up to double the life from Razor reels over standard reels.:

|   |                  |          |  |   |  |
|---|------------------|----------|--|---|--|
| 1 | <b>R137-8423</b> | 137-8423 | Reel - 11 Blade Razor Series<br>Forward Swept w/Bearings<br>and Seals 22x5 | 1 |  |
|---|------------------|----------|--|---|--|

*Detail Description:* R&R Razor Reels are manufactured from a special high alloy steel and then hardened to RC48-51 to match the temper of our Razor bedknives and original equipment premium series bedknives. All R&R Reels are cylindrically ground on bearing surfaces, relief ground and precision computer balanced for extended bearing and reel life. R&R Products Reels are guaranteed against defects in material and workmanship for the life of the reel under normal use. You can expect up to double the life from Razor reels over standard reels.:

### R&R Bedknives, Lifetime Guaranteed

|   |                  |          |                    |   |  |
|---|------------------|----------|--------------------|---|--|
| 2 | <b>R110-4084</b> | 110-4084 | Bedknife - Low Cut | 1 |  |
|---|------------------|----------|--------------------|---|--|

*Detail Description:* R&R Bedknives are manufactured from high carbon-boron alloy steel and then hardened to RC46-49 to match the temper of our reel blades and original equipment reels. Bedknives are surface ground on the top and front edge and straightened three times before being packaged with oil for rust prevention. All R&R Bedknives now have an increased front edge grind for added life. All R&R Bedknives are guaranteed against defects in material and workmanship under normal use for the life of the part.:

|   |                  |          |                     |   |  |
|---|------------------|----------|---------------------|---|--|
| 2 | <b>R108-9096</b> | 108-9096 | Bedknife - Standard | 1 |  |
|---|------------------|----------|---------------------|---|--|

All original equipment manufacturers names and part numbers are used for identification purposes only, and we are in no way implying that our products are original equipment parts. Prices subject to change without notice.





## Replaces Toro Reelmaster 5410G Parts

DPA Cutting Unit with 5" Reel - Model 03694 & 03695  
Reel & Bedknife



| Item No | R&R Part No. | OEM Part No. | Description | Qty Req | Order Quantity |
|---------|--------------|--------------|-------------|---------|----------------|
|---------|--------------|--------------|-------------|---------|----------------|

*Detail Description: R&R Bedknives are manufactured from high carbon-boron alloy steel and then hardened to RC46-49 to match the temper of our reel blades and original equipment reels. Bedknives are surface ground on the top and front edge and straightened three times before being packaged with oil for rust prevention. All R&R Bedknives now have an increased front edge grind for added life. All R&R Bedknives are guaranteed against defects in material and workmanship under normal use for the life of the part.:*

|   |                  |          |                     |   |  |
|---|------------------|----------|---------------------|---|--|
| 2 | <b>R110-4074</b> | 110-4074 | Bedknife - High Cut | 1 |  |
|---|------------------|----------|---------------------|---|--|

*Detail Description: R&R Bedknives are manufactured from high carbon-boron alloy steel and then hardened to RC46-49 to match the temper of our reel blades and original equipment reels. Bedknives are surface ground on the top and front edge and straightened three times before being packaged with oil for rust prevention. All R&R Bedknives now have an increased front edge grind for added life. All R&R Bedknives are guaranteed against defects in material and workmanship under normal use for the life of the part.:*

|   |                  |          |                             |   |  |
|---|------------------|----------|-----------------------------|---|--|
| 2 | <b>R120-1640</b> | 120-1640 | Bedknife - Low Cut Extended | 1 |  |
|---|------------------|----------|-----------------------------|---|--|

*Detail Description: R&R Bedknives are manufactured from high carbon-boron alloy steel and then hardened to RC46-49 to match the temper of our reel blades and original equipment reels. Bedknives are surface ground on the top and front edge and straightened three times before being packaged with oil for rust prevention. All R&R Bedknives now have an increased front edge grind for added life. All R&R Bedknives are guaranteed against defects in material and workmanship under normal use for the life of the part.:*

### **R&R Razor Tool Steel Bedknives, Lifetime Guaranteed**

|   |                  |                       |  |   |  |
|---|------------------|-----------------------|--|---|--|
| 2 | <b>R108-9095</b> | 108-9095,<br>137-0833 | Bedknife - Razor Tool Steel -<br>22 High Cut | 1 |  |
|---|------------------|-----------------------|--|---|--|

*Detail Description: R&R Razor bedknives are manufactured from premium alloy tool steel steel and then hardened to RC48-51 to match the temper of our Razor reel blades and original equipment premium series reels. Bedknives are surface ground on the top and front edge and specially packaged for rust prevention. All R&R Bedknives now have an increased front edge grind for added life. All R&R Bedknives are guaranteed against defects in material and workmanship under normal use for the life of the part. You can expect up to double the life over standard bedknives.:*

|   |                  |          |  |   |  |
|---|------------------|----------|--|---|--|
| 2 | <b>R119-4280</b> | 119-4280 | Bedknife - Razor Tool Steel -<br>22 x 3/8 Extended | 1 |  |
|---|------------------|----------|--|---|--|

All original equipment manufacturers names and part numbers are used for identification purposes only, and we are in no way implying that our products are original equipment parts. Prices subject to change without notice.



## Replaces Toro Reelmaster 5410G Parts

DPA Cutting Unit with 5" Reel - Model 03694 & 03695  
Reel & Bedknife



| Item No | R&R Part No. | OEM Part No. | Description | Qty Req | Order Quantity |
|---------|--------------|--------------|-------------|---------|----------------|
|---------|--------------|--------------|-------------|---------|----------------|

*Detail Description: R&R Razor bedknives are manufactured from premium alloy tool steel steel and then hardened to RC48-51 to match the temper of our Razor reel blades and original equipment premium series reels. Bedknives are surface ground on the top and front edge and specially packaged for rust prevention. All R&R Bedknives now have an increased front edge grind for added life. All R&R Bedknives are guaranteed against defects in material and workmanship under normal use for the life of the part. You can expect up to double the life over standard bedknives.:*

|   |                  |                                    |  |   |  |
|---|------------------|------------------------------------|--|---|--|
| 2 | <b>R137-0832</b> | 125-2771,<br>127-7132,<br>137-0832 | Bedknife - Razor Tool Steel -<br>3/8 x 22 Lowcut | 0 |  |
|---|------------------|------------------------------------|--|---|--|

### Overhaul Kits and Service Tools

|   |                 |         |                            |   |  |
|---|-----------------|---------|----------------------------|---|--|
| 5 | <b>R51-0880</b> | 51-0880 | Bedknife Screw Driver Tool | 0 |  |
|---|-----------------|---------|----------------------------|---|--|

*Detail Description: Easily install and remove bed knife screws with the help of a ratchet with 3/8" drive. Tool manufactured with hardened alloy steel.:*

|   |                  |          |                               |   |  |
|---|------------------|----------|-------------------------------|---|--|
| 6 | <b>R120-7230</b> | 120-7230 | Overhaul Kit - Fits DPA Units | 0 |  |
|---|------------------|----------|-------------------------------|---|--|

*Detail Description: Incl 2 ea.: R108-0015, R115-7039, R119-4155, R120-5116, R120-5118, R120-5120, R3296-33, R3296-48 & 4 ea: R106-5344:*

|   |                  |          |              |   |  |
|---|------------------|----------|--------------|---|--|
| 7 | <b>R110-9600</b> | 110-9600 | High HOC Kit | 1 |  |
|---|------------------|----------|--------------|---|--|

*Detail Description: Includes 1 ea.: R120-0404, R120-0405 & 2 ea: R112-7451, R322-16, R445722 & 4 ea.: R106-9758, R104-8300, R453011, R104-8301 & 8 ea: R106-3925:*

|   |                  |          |                                 |   |  |
|---|------------------|----------|---------------------------------|---|--|
| 8 | <b>R117-0975</b> | 117-0975 | Tool- Reel Bearing Installation | 1 |  |
|---|------------------|----------|---------------------------------|---|--|

### Other Parts Available

|    |                  |          |           |   |  |
|----|------------------|----------|-----------|---|--|
| 20 | <b>R110-1706</b> | 110-1706 | Deflector | 5 |  |
|----|------------------|----------|-----------|---|--|

|    |                  |                       |                          |   |  |
|----|------------------|-----------------------|--------------------------|---|--|
| 21 | <b>R33025-00</b> | 32025-00,<br>33025-00 | Locknut - 10mm x 1.5 Jam | 2 |  |
|----|------------------|-----------------------|--------------------------|---|--|

|    |                 |         |                            |   |  |
|----|-----------------|---------|----------------------------|---|--|
| 22 | <b>R99-3755</b> | 99-3755 | Spring - Bed Bar Adjusting | 2 |  |
|----|-----------------|---------|----------------------------|---|--|

|    |                 |         |                           |   |  |
|----|-----------------|---------|---------------------------|---|--|
| 23 | <b>R99-2098</b> | 99-2098 | Washer - Bed Bar Adjuster | 2 |  |
|----|-----------------|---------|---------------------------|---|--|

|    |                 |         |  |   |  |
|----|-----------------|---------|--|---|--|
| 24 | <b>R99-2096</b> | 99-2096 | Screw - Bed Bar Adjustment -<br>M10 Thrd 1 End | 2 |  |
|----|-----------------|---------|--|---|--|

All original equipment manufacturers names and part numbers are used for identification purposes only, and we are in no way implying that our products are original equipment parts. Prices subject to change without notice.



## Replaces Toro Reelmaster 5410G Parts

DPA Cutting Unit with 5" Reel - Model 03694 & 03695  
Reel & Bedknife



| Item No | R&R Part No. | OEM Part No.   | Description                             | Qty Req | Order Quantity |
|---------|--------------|--|---|---------|----------------|
| 25      | R32120-93    | 32120-93   | Snap Ring - HD                          | 2       |                |
| 26      | R106-5335    | 106-5335   | Wave Washer - Reel Adjusting            | 2       |                |
| 27      | R106-5344    | 106-5344   | Bushing - Flanged and Keyed             | 4       |                |
| 28      | R114-9396    | 114-9396,<br>119-4067                                      | Bolt - Hex HD 5/16-18 x 3/8             | 2       |                |
| 29      | R99-2097     | 99-2097  | Detent - Bed Bar Adjuster               | 2       |                |
| 30      | R106-5363    | 106-5363   | Shaft - Adjusting - Bed Bar - Stainless | 2       |                |
| 31      | R3231-25     | 01-173-0610,<br>30-9970,<br>3231-25,<br>3231-3,<br>900064P | Bolt - Carriage 3/8-16 x 1-1/4          | 4       |                |
| 32      | R110-4069    | 110-4069   | Bracket                                 | 1       |                |
| 33      | R107-7400    | 107-7400   | Pin - Lynch                             | 1       |                |
| 34      | R110-4058    | 110-4058   | Bracket - Chain                         | 1       |                |
| 35      | R107-2951    | 107-2951   | Frame                                   | 1       |                |
| 36      | R445722      | 30-8980,<br>32128-2,<br>32128-20,<br>32128-20              | Nut - Serrated Washer                   | 4       |                |
| 37      | R107-7777-01 | 107-7777-01  | Grass Shield Assy - Rear                | 1       |                |
| 38      | R105-8095-01 | 105-8095-01  | Bed Bar - Fits OEM Units Only           | 1       |                |
| 38      | R150905      |  | Bed Bar - Fits R&R Units Only           | 1       |                |
| 39      | R150476      | 3-3816,<br>3-6462,<br>57-4910                              | Screw - Bedknife 5/16-18 x 5/8          | 8       |                |

All original equipment manufacturers names and part numbers are used for identification purposes only, and we are in no way implying that our products are original equipment parts. Prices subject to change without notice.



## Replaces Toro Reelmaster 5410G Parts

DPA Cutting Unit with 5" Reel - Model 03694 & 03695  
Reel & Bedknife



| Item No | R&R Part No. | OEM Part No.  | Description                          | Qty Req | Order Quantity |
|---------|--------------|---|--------------------------------------|---------|----------------|
| 40      | R104-8300    | 104-8300,<br>104-8300 ,<br>119-4041   | Locknut - 5/16-18 Flanged<br>Y/Zinc  | 4       |                |
| 41      | R106-3925    | 106-3925  | Shim - 1/4 - Rear Roller HOC         | 8       |                |
| 42      | R106-3924    | 106-3924  | Bracket - Rear Roller                | 2       |                |
| 43      | RP17609-2    | 106-9758,<br>3230-7   | Bolt - Carriage 5/16-18 x 1-1/2      | 4       |                |
| 44      | R3234-11     | 3234-11   | Bolt - Hex Washer HD                 | 2       |                |
| 45      | R150485      | 2410-30   | Cap - Protective Bearing<br>Housing  | 1       |                |
| 46      | R237-68      | 237-68  | O-Ring                               | 2       |                |
| 47      | R3296-33     | 3296-33   | Locknut - 5/8-18 ESNA Jam            | 2       |                |
| 48      | R106-9623    | 106-9623  | Bolt - Bedbar                        | 2       |                |
| 49      | R107-7773    | 107-7773  | Bolt - Soc HD Cap 5/16-18 x<br>2-1/2 | 1       |                |
| 50      | R453017      | 01-166-0050,<br>01-166-0240,<br>01-166-0800,<br>24-13-AD,<br>24-14-AD,<br>32-8110,<br>3256-26,<br>3256-6,<br>453017,<br>69-8980,<br>87-7270 | Washer - Flat 1/2                    | 2       |                |
| 51      | R3234-19     | 3234-19   | Bolt - Hex Washer<br>3/8-16x1-3/4    | 2       |                |
| 52      | R61-1950     | 61-1950   | Washer - Nylon - Bed Bar             | 4       |                |
| 53      | R56-9520     | 56-9520   | Bushing - Nyliner                    | 2       |                |

All original equipment manufacturers names and part numbers are used for identification purposes only, and we are in no way implying that our products are original equipment parts. Prices subject to change without notice.





## Replaces Toro Reelmaster 5410G Parts

DPA Cutting Unit with 5" Reel - Model 03694 & 03695  
Reel & Bedknife



| Item No | R&R Part No. | OEM Part No.   | Description                           | Qty Req | Order Quantity |
|---------|--------------|--|---------------------------------------|---------|----------------|
| 54      | R106-9618    | 106-9618   | Bushing - Rubber                      | 2       |                |
| 55      | R107-2979    | 107-2979   | Bolt - Shoulder                       | 4       |                |
| 56      | R170714      | 302-34,<br>302-39,<br>62-3520  | Fitting - Pressure Relief             | 2       |                |
| 57      | R108-9081    | 108-9081   | Side Plate - RH - Fits OEM Units Only | 1       |                |
| 57      | R150901      |  | Side Plate - RH - Fits R&R Units Only | 1       |                |
| 58      | R302-5       | 21-6010,<br>302-11,<br>302-37,<br>302-47,<br>302-5,<br>302-57,<br>302-58,<br>302-6,<br>31-0300,<br>32-9660,<br>60-0800,<br>62-3880,<br>92-4181 | Fitting - Grease                      | 2       |                |
| 59      | R3231-4      | 01-157-0440,<br>01-173-0612,<br>3231-4   | Bolt - Carriage 3/8-16 x 1-1/2        | 2       |                |
| 60      | R93-2489     | 93-2489  | Bearing - Reel                        | 2       |                |
| 61      | R107-4028    | 105-6757,<br>107-4028  | Seal - Grease                         | 2       |                |
| 62      | R105-8075    | 105-8075   | Insert - Threaded - RH - 8 Tooth      | 1       |                |
| 63      | R105-8076    | 105-8076   | Insert - Threaded - LH - 8 Tooth      | 1       |                |
| 64      | R92-2601     | 92-2601  | Snap Ring                             | 2       |                |

All original equipment manufacturers names and part numbers are used for identification purposes only, and we are in no way implying that our products are original equipment parts. Prices subject to change without notice.



## Replaces Toro Reelmaster 5410G Parts

DPA Cutting Unit with 5" Reel - Model 03694 & 03695  
Reel & Bedknife



| Item No | R&R Part No.        | OEM Part No.  | Description                           | Qty Req | Order Quantity |
|---------|---------------------|---|---------------------------------------|---------|----------------|
| 65      | <b>R107-2954</b>    | 107-2954  | Nut - Bearing Adjuster                | 1       |                |
| 66      | <b>R108-9080</b>    | 108-9080  | Side Plate - LH - Fits OEM Units Only | 1       |                |
| 66      | <b>R150900</b>      |   | Side Plate - LH - Fits R&R Units Only | 1       |                |
| 67      | <b>R108-9090-01</b> | 108-9090-01   | Weight                                | 1       |                |
| 68      | <b>R101526</b>      | 01-150-0970,<br>01-178-0620,<br>20-53-AGD,<br>321-11,<br>3224-8,<br>323-11,<br>323-12,<br>323-31,<br>323-4,<br>323-47 | Bolt - Hex HD 3/8-16 x 2-1/2 GR5      | 2       |                |
| 69      | <b>R3256-74</b>     | 3256-74   | Washer - Flat                         | 1       |                |
| 70      | <b>R322-14</b>      | 01-150-0830,<br>01-178-0524,<br>30-8900,<br>322-14  | Bolt - Hex HD 5/16-18 x 3 GR5         | 1       |                |
| 71      | <b>R322-16</b>      | 322-16,<br>Apr-00   | Bolt - Hex HD 5/16-18 x 1-1/8         | 2       |                |
| 73      | <b>R106-4214</b>    | 106-4214  | Set Screw - 1/4-20 x 1/2 Cone Point   | 1       |                |
| 74      | <b>R32128-19</b>    | 104-8301,<br>104-9301,<br>32128-19  | Locknut - 3/8-16 Flanged Top Lock     | 4       |                |
| 75      | <b>R107-2952</b>    | 107-2952  | Bracket - Front Roller                | 2       |                |

All original equipment manufacturers names and part numbers are used for identification purposes only, and we are in no way implying that our products are original equipment parts. Prices subject to change without notice.



## Replaces Toro Reelmaster 5410G Parts

DPA Cutting Unit with 5" Reel - Model 03694 & 03695  
Reel & Bedknife



| Item No | R&R Part No. | OEM Part No.   | Description                      | Qty Req | Order Quantity |
|---------|--------------|--|----------------------------------|---------|----------------|
| 76      | R453011      | 01-166-0100,<br>01-166-0120,<br>01-166-0270,<br>01-166-0500,<br>01-166-0600,<br>01-166-0620,<br>132-4593,<br>2356-3,<br>237-12,<br>24-10-AD,<br>24-11-AD,<br>24-11-BD,<br>24-12-AD,<br>24-12-BD,<br>30-9310,<br>32-8190,<br>3256-24,<br>3256-3,<br>3256-36,<br>3256-4,<br>453011,<br>47-9950,<br>48-9220,<br>513458,<br>7-0052 | Washer - Flat 3/8 SAE Y/Zinc     | 4       |                |
| 77      | R107-4026    | 107-4026   | Bolt - Hex Tap 3/8-16 x 3-3/4    | 2       |                |
| 78      | R108-4213    | 108-4213   | Bracket- HOC - LH - Groomer      | 1       |                |
| 79      | R108-4214    | 108-4214   | Bracket-HOC - RH - Groomer       | 1       |                |
| 80      | R110-4088-03 | 110-4088-03,<br>119-8010-03  | Kickstand                        | 1       |                |
| 81      | R3230-30     | 3230-30  | Bolt - Carriage 5/16x4 1/2       | 4       |                |
| 82      | R92-2762     | 92-2762  | Pin - Snap                       | 1       |                |
| 83      | R107-2970    | 107-2970   | Rod - Spring                     | 1       |                |
| 84      | R108-9084    | 108-9084   | Spring                           | 1       |                |
| 85      | R119-0626    | 119-0626   | Shim - Roller - 1/4 in - Slotted | 8       |                |

All original equipment manufacturers names and part numbers are used for identification purposes only, and we are in no way implying that our products are original equipment parts. Prices subject to change without notice.



## Replaces Toro Reelmaster 5410G Parts

DPA Cutting Unit with 5" Reel - Model 03694 & 03695  
Reel & Bedknife



| Item No   | R&R Part No. | OEM Part No.                       | Description                           | Qty Req | Order Quantity |
|---|--------------|------------------------------------|---------------------------------------|---------|----------------|
| 86  | R443818      | 01-191-0813,<br>3218-18,<br>3218-5 | Nut - 1/2-13 Hex Jam Zinc             | 3       |                |
| 87  | R99-8662     | 99-8662                            | Tube - Spring                         | 1       |                |
| 88  | R104-3396    | 104-3396                           | Bolt - Hex HD 3/8-16 x 2-1/4          | 1       |                |
| 89  | R32128-43    | 30-8990,<br>32128-43,<br>3290-357  | Nut - Flanged Whiz - 3/8-16           | 5       |                |
| 90  | R125-2796    | 125-2796                           | Bracket- Front HOC                    | 2       |                |
| <i>Detail Description: Fits 2013 &amp; Newer:</i> |              |                                    |                                       |         |                |
| 91  | R106-3937    | 106-3937                           | Carrier Frame Assy                    | 1       |                |
| 92  | R67-9410     | 67-9410                            | Washer - Clevis Pin                   | 1       |                |
| 93  | R108-4279    | 108-4279                           | Spacer - Frame                        | 2       |                |
| 94  | R93-2877     | 93-2877                            | Bushing - Flanged                     | 2       |                |
| 95  | R108-4284    | 108-4284                           | Shaft - Support                       | 1       |                |
| 96  | R107-2996    | 107-2996                           | Grass Shield - Front                  | 1       |                |
| 97  | R3234-7      | 3234-7                             | Bolt - Hex Washer HD 5/16-18<br>x 5/8 | 4       |                |
| 98  | R93-6688     | 93-6688                            | Decal - Warning                       | 1       |                |
| 99  | R120-0404    | 120-0404                           | Bracket- High HOC - LH                | 1       |                |
| <i>Detail Description: Fits 2011 &amp; Newer:</i> |              |                                    |                                       |         |                |
| 100   | R120-0405    | 120-0405                           | Bracket - High HOC - RH               | 1       |                |
| <i>Detail Description: Fits 2011 &amp; Newer:</i> |              |                                    |                                       |         |                |
| 101   | R120-5118    | 120-5118                           | Shaft - Adjuster                      | 2       |                |

All original equipment manufacturers names and part numbers are used for identification purposes only, and we are in no way implying that our products are original equipment parts. Prices subject to change without notice.



## Replaces Toro Reelmaster 5410G Parts

DPA Cutting Unit with 5" Reel - Model 03694 & 03695  
Reel & Bedknife



| Item No                                      | R&R Part No.     | OEM Part No.                                    | Description                       | Qty Req | Order Quantity |
|--|------------------|---|-----------------------------------|---------|----------------|
| <i>Detail Description: 2012 &amp; Newer:</i> |                  |   |                                   |         |                |
| 102  | <b>R120-5116</b> | 120-5116  | Washer - Wave                     | 2       |                |
| 103  | <b>R108-0015</b> | 108-0015  | Washer - Flat                     | 2       |                |
| 104  | <b>R115-7039</b> | 115-7039  | Screw - Adjuster - Bedbar         | 2       |                |
| 105  | <b>R119-4155</b> | 119-4155  | Washer - Hardened                 | 2       |                |
| 106  | <b>R120-5120</b> | 120-5120  | Spring - Compression              | 2       |                |
| 107  | <b>R3296-48</b>  | 119-4039,<br>32146-7,<br>3296-34,<br>3296-48    | Locknut - 7/16-14 ESNA            | 2       |                |
| 108  | <b>R112-7451</b> | 100-9429,<br>112-7451                           | Bolt - Hex Tap 3/8-16 x 2-3/4     | 2       |                |
| 109  | <b>R104-8301</b> | 104-8301,<br>104-9301,<br>109-6658,<br>133-7570 | Locknut - 3/8-16 Nylon<br>Flanged | 4       |                |

All original equipment manufacturers names and part numbers are used for identification purposes only, and we are in no way implying that our products are original equipment parts. Prices subject to change without notice.