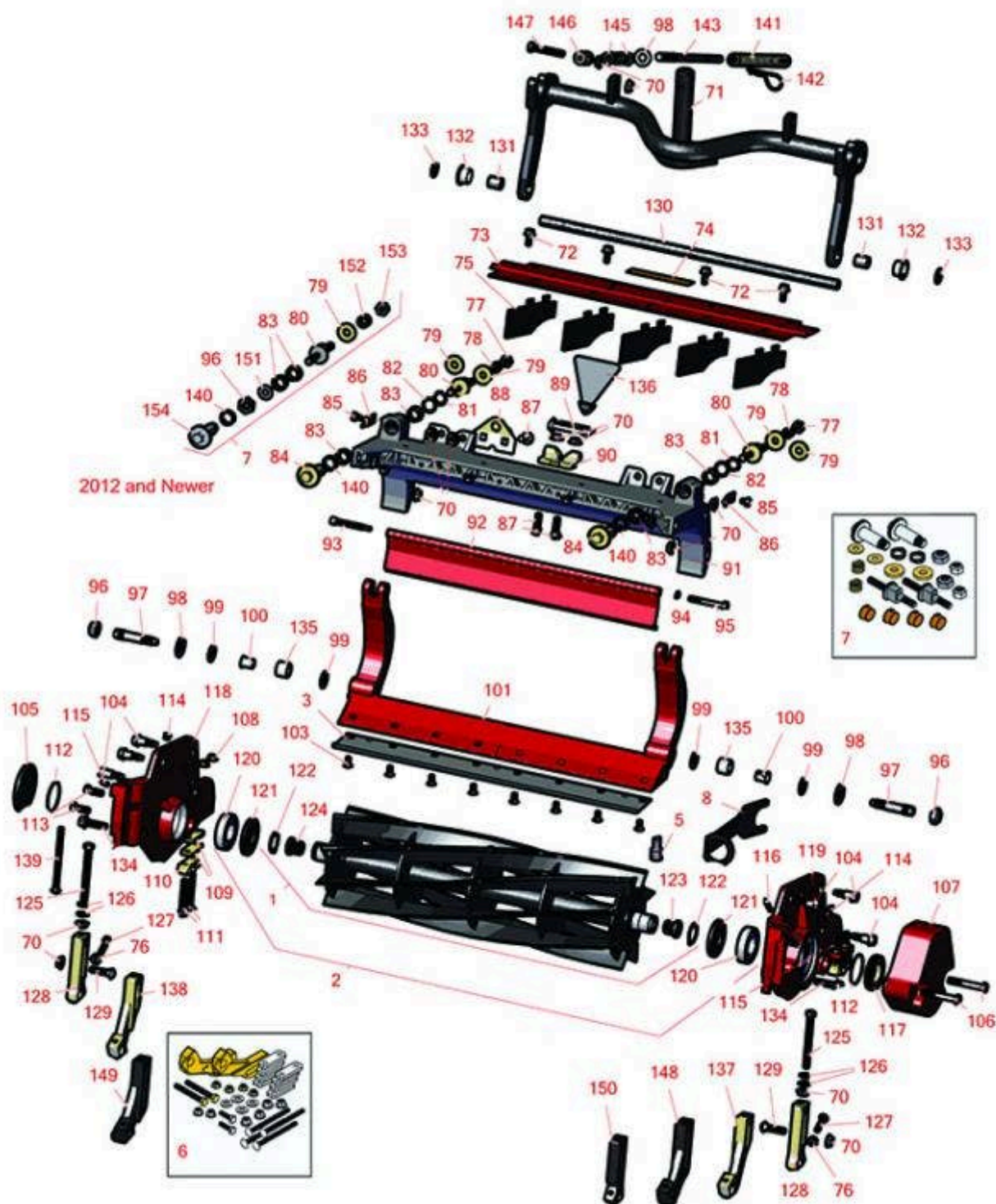




Replaces Toro Reelmaster 5610-D Parts

DPA Cutting Unit - Models 03681, 03682, 03696 & 03697
Reel & Bedknife



All original equipment manufacturers names and part numbers are used for identification purposes only, and we are in no way implying that our products are original equipment parts. Prices subject to change without notice.



Replaces Toro Reelmaster 5610-D Parts

DPA Cutting Unit - Models 03681, 03682, 03696 & 03697
Reel & Bedknife



| Item No | R&R Part No. | OEM Part No. | Description | Qty Req | Order Quantity |
|---|------------------|--------------|---|---------|----------------|
| R&R Reels, Lifetime Guaranteed | | | | | |
| 1 | R127-2077 | 127-2077 | Reel - 5 Blade Radial 22x7 | 1 | |
| <i>Detail Description: R&R Reel blades are manufactured from high carbon-boron alloy steel and then hardened to RC46-49 to match the temper of our bedknives and original equipment bedknives. All R&R Reels are cylindrically ground on bearing surfaces and then relief ground. Reels are then precision computer balanced for extended bearing and reel life. R&R Products Reels are guaranteed against defects in material and workmanship for the life of the reel under normal use.:</i> | | | | | |
| 1 | R133-8209 | | Reel - 5 Blade Razor Series Radial Low Drag 22x7 | 1 | |
| <i>Detail Description: R&R Razor Reels are manufactured from a special high alloy steel and then hardened to RC48-51 to match the temper of our Razor bedknives and original equipment premium series bedknives. All R&R Reels are cylindrically ground on bearing surfaces, relief ground and precision computer balanced for extended bearing and reel life. R&R Products Reels are guaranteed against defects in material and workmanship for the life of the reel under normal use. You can expect up to double the life from Razor reels over standard reels.:</i> | | | | | |
| 1 | R107-3264 | 107-3264 | Reel - 8 Blade 22x7 | 1 | |
| <i>Detail Description: R&R Reel blades are manufactured from high carbon-boron alloy steel and then hardened to RC46-49 to match the temper of our bedknives and original equipment bedknives. All R&R Reels are cylindrically ground on bearing surfaces and then relief ground. Reels are then precision computer balanced for extended bearing and reel life. R&R Products Reels are guaranteed against defects in material and workmanship for the life of the reel under normal use.:</i> | | | | | |
| 1 | R108-9073 | 108-9073 | Reel - 8 Blade 22x7 | 1 | |
| <i>Detail Description: R&R Reel blades are manufactured from high carbon-boron alloy steel and then hardened to RC46-49 to match the temper of our bedknives and original equipment bedknives. All R&R Reels are cylindrically ground on bearing surfaces and then relief ground. Reels are then precision computer balanced for extended bearing and reel life. R&R Products Reels are guaranteed against defects in material and workmanship for the life of the reel under normal use.:</i> | | | | | |
| 1 | R127-2084 | 127-2084 | Reel - 8 Blade Radial Low Drag 22x7 | 1 | |

All original equipment manufacturers names and part numbers are used for identification purposes only, and we are in no way implying that our products are original equipment parts. Prices subject to change without notice.



Replaces Toro Reelmaster 5610-D Parts

DPA Cutting Unit - Models 03681, 03682, 03696 & 03697
Reel & Bedknife



| Item No | R&R Part No. | OEM Part No. | Description | Qty Req | Order Quantity |
|---------|--------------|--------------|-------------|---------|----------------|
|---------|--------------|--------------|-------------|---------|----------------|

Detail Description: R&R Reel blades are manufactured from high carbon-boron alloy steel and then hardened to RC46-49 to match the temper of our bedknives and original equipment bedknives. All R&R Reels are cylindrically ground on bearing surfaces and then relief ground. Reels are then precision computer balanced for extended bearing and reel life. R&R Products Reels are guaranteed against defects in material and workmanship for the life of the reel under normal use.:

| | | | | |
|---|------------------|----------|----------------------|---|
| 1 | R117-0980 | 117-0980 | Reel - 11 Blade 22x7 | 1 |
|---|------------------|----------|----------------------|---|

Detail Description: R&R Reel blades are manufactured from high carbon-boron alloy steel and then hardened to RC46-49 to match the temper of our bedknives and original equipment bedknives. All R&R Reels are cylindrically ground on bearing surfaces and then relief ground. Reels are then precision computer balanced for extended bearing and reel life. R&R Products Reels are guaranteed against defects in material and workmanship for the life of the reel under normal use.:

| | | | | |
|---|------------------|----------|----------------------|---|
| 1 | R108-9074 | 108-9074 | Reel - 11 Blade 22x7 | 1 |
|---|------------------|----------|----------------------|---|

Detail Description: R&R Reel blades are manufactured from high carbon-boron alloy steel and then hardened to RC46-49 to match the temper of our bedknives and original equipment bedknives. All R&R Reels are cylindrically ground on bearing surfaces and then relief ground. Reels are then precision computer balanced for extended bearing and reel life. R&R Products Reels are guaranteed against defects in material and workmanship for the life of the reel under normal use.:

| | | | | |
|---|------------------|----------|--------------------------------------|---|
| 1 | R127-2085 | 127-2085 | Reel - 11 Blade Radial Low Drag 22x7 | 1 |
|---|------------------|----------|--------------------------------------|---|

Detail Description: R&R Reel blades are manufactured from high carbon-boron alloy steel and then hardened to RC46-49 to match the temper of our bedknives and original equipment bedknives. All R&R Reels are cylindrically ground on bearing surfaces and then relief ground. Reels are then precision computer balanced for extended bearing and reel life. R&R Products Reels are guaranteed against defects in material and workmanship for the life of the reel under normal use.:

| | | | | |
|---|------------------|----------|--|---|
| 1 | R127-0294 | 127-0294 | Reel - 11 Blade Razor Series Forward Swept Low Drag 22x7 | 1 |
|---|------------------|----------|--|---|

Detail Description: R&R Razor Reels are manufactured from a special high alloy steel and then hardened to RC48-51 to match the temper of our Razor bedknives and original equipment premium series bedknives. All R&R Reels are cylindrically ground on bearing surfaces, relief ground and precision computer balanced for extended bearing and reel life. R&R Products Reels are guaranteed against defects in material and workmanship for the life of the reel under normal use. You can expect up to double the life from Razor reels over standard reels.:

All original equipment manufacturers names and part numbers are used for identification purposes only, and we are in no way implying that our products are original equipment parts. Prices subject to change without notice.



Replaces Toro Reelmaster 5610-D Parts

DPA Cutting Unit - Models 03681, 03682, 03696 & 03697
Reel & Bedknife



| Item No | R&R Part No. | OEM Part No. | Description | Qty Req | Order Quantity |
|---|------------------|--------------|--|---------|----------------|
| 2 | R137-8437 | 137-8437 | Reel - 5 Blade Razor Series Radial Low Drag (RR) w/Bearings and Seals 22x7 | 1 | |
| <i>Detail Description: R&R Razor Reels are manufactured from a special high alloy steel and then hardened to RC48-51 to match the temper of our Razor bedknives and original equipment premium series bedknives. All R&R Reels are cylindrically ground on bearing surfaces, relief ground and precision computer balanced for extended bearing and reel life. R&R Products Reels are guaranteed against defects in material and workmanship for the life of the reel under normal use. You can expect up to double the life from Razor reels over standard reels.:</i> | | | | | |
| 2 | R137-8432 | 137-8432 | Reel - 8 Blade Radial w/Bearings and Seals 22x7 | 1 | |
| <i>Detail Description: R&R Reel blades are expertly crafted from premium high carbon-boron alloy steel, heat-treated to perfectly complement both R&R and OEM bedknives. Each reel undergoes precision cylindrical grinding on bearing surfaces, followed by relief grinding for optimal performance. Advanced computer balancing ensures extended reel and bearing life. Backed by our lifetime guarantee against defects in materials and craftsmanship under normal use, R&R Reels deliver unmatched durability and cutting precision you can trust.:</i> | | | | | |
| 2 | R137-8438 | 137-8438 | Reel - 8 Blade Razor Series Radial Low Drag (RR) w/Bearings and Seals 22x7 | 1 | |
| <i>Detail Description: R&R Razor Reels are manufactured from a special high alloy steel and then hardened to RC48-51 to match the temper of our Razor bedknives and original equipment premium series bedknives. All R&R Reels are cylindrically ground on bearing surfaces, relief ground and precision computer balanced for extended bearing and reel life. R&R Products Reels are guaranteed against defects in material and workmanship for the life of the reel under normal use. You can expect up to double the life from Razor reels over standard reels.:</i> | | | | | |
| 2 | R133-8211 | 133-8211 | Reel - 8 Blade Razor Series Radial w/Bearings and Seals 22x7 | 1 | |
| <i>Detail Description: R&R Razor Reels are manufactured from a special high alloy steel and then hardened to RC48-51 to match the temper of our Razor bedknives and original equipment premium series bedknives. All R&R Reels are cylindrically ground on bearing surfaces, relief ground and precision computer balanced for extended bearing and reel life. R&R Products Reels are guaranteed against defects in material and workmanship for the life of the reel under normal use. You can expect up to double the life from Razor reels over standard reels.:</i> | | | | | |
| 2 | R137-8433 | 137-8433 | Reel - 11 Blade Radial w/Bearings and Seals 22x7 | 1 | |

All original equipment manufacturers names and part numbers are used for identification purposes only, and we are in no way implying that our products are original equipment parts. Prices subject to change without notice.



Replaces Toro Reelmaster 5610-D Parts

DPA Cutting Unit - Models 03681, 03682, 03696 & 03697
Reel & Bedknife



| Item No | R&R Part No. | OEM Part No. | Description | Qty Req | Order Quantity |
|---------|--------------|--------------|-------------|---------|----------------|
|---------|--------------|--------------|-------------|---------|----------------|

Detail Description: R&R Reel blades are expertly crafted from premium high carbon-boron alloy steel, heat-treated to perfectly complement both R&R and OEM bedknives. Each reel undergoes precision cylindrical grinding on bearing surfaces, followed by relief grinding for optimal performance. Advanced computer balancing ensures extended reel and bearing life. Backed by our lifetime guarantee against defects in materials and craftsmanship under normal use, R&R Reels deliver unmatched durability and cutting precision you can trust.:

| | | | | | |
|---|------------------|----------|---|---|--|
| 2 | R137-8439 | 137-8439 | Reel - 11 Blade Razor Series Forward Swept Low Drag (Fsr) w/Bearings and Seals 22x7 | 1 | |
|---|------------------|----------|---|---|--|

Detail Description: R&R Razor Reels are manufactured from a special high alloy steel and then hardened to RC48-51 to match the temper of our Razor bedknives and original equipment premium series bedknives. All R&R Reels are cylindrically ground on bearing surfaces, relief ground and precision computer balanced for extended bearing and reel life. R&R Products Reels are guaranteed against defects in material and workmanship for the life of the reel under normal use. You can expect up to double the life from Razor reels over standard reels.:

R&R Bedknives, Lifetime Guaranteed

| | | | | | |
|---|------------------|----------|---------------------|---|--|
| 3 | R108-9096 | 108-9096 | Bedknife - Standard | 1 | |
|---|------------------|----------|---------------------|---|--|

Detail Description: R&R Bedknives are manufactured from high carbon-boron alloy steel and then hardened to RC46-49 to match the temper of our reel blades and original equipment reels. Bedknives are surface ground on the top and front edge and straightened three times before being packaged with oil for rust prevention. All R&R Bedknives now have an increased front edge grind for added life. All R&R Bedknives are guaranteed against defects in material and workmanship under normal use for the life of the part.:

| | | | | | |
|---|------------------|----------|--------------------|---|--|
| 3 | R110-4084 | 110-4084 | Bedknife - Low Cut | 1 | |
|---|------------------|----------|--------------------|---|--|

Detail Description: R&R Bedknives are manufactured from high carbon-boron alloy steel and then hardened to RC46-49 to match the temper of our reel blades and original equipment reels. Bedknives are surface ground on the top and front edge and straightened three times before being packaged with oil for rust prevention. All R&R Bedknives now have an increased front edge grind for added life. All R&R Bedknives are guaranteed against defects in material and workmanship under normal use for the life of the part.:

| | | | | | |
|---|------------------|----------|-----------------------------|---|--|
| 3 | R120-1640 | 120-1640 | Bedknife - Low Cut Extended | 1 | |
|---|------------------|----------|-----------------------------|---|--|

All original equipment manufacturers names and part numbers are used for identification purposes only, and we are in no way implying that our products are original equipment parts. Prices subject to change without notice.



Replaces Toro Reelmaster 5610-D Parts

DPA Cutting Unit - Models 03681, 03682, 03696 & 03697
Reel & Bedknife



| Item No | R&R Part No. | OEM Part No. | Description | Qty Req | Order Quantity |
|---------|--------------|--------------|-------------|---------|----------------|
|---------|--------------|--------------|-------------|---------|----------------|

Detail Description: R&R Bedknives are manufactured from high carbon-boron alloy steel and then hardened to RC46-49 to match the temper of our reel blades and original equipment reels. Bedknives are surface ground on the top and front edge and straightened three times before being packaged with oil for rust prevention. All R&R Bedknives now have an increased front edge grind for added life. All R&R Bedknives are guaranteed against defects in material and workmanship under normal use for the life of the part.:

| | | | | | |
|---|------------------|----------|---------------------|---|--|
| 3 | R110-4074 | 110-4074 | Bedknife - High Cut | 1 | |
|---|------------------|----------|---------------------|---|--|

Detail Description: R&R Bedknives are manufactured from high carbon-boron alloy steel and then hardened to RC46-49 to match the temper of our reel blades and original equipment reels. Bedknives are surface ground on the top and front edge and straightened three times before being packaged with oil for rust prevention. All R&R Bedknives now have an increased front edge grind for added life. All R&R Bedknives are guaranteed against defects in material and workmanship under normal use for the life of the part.:

R&R Razor Tool Steel Bedknives, Lifetime Guaranteed

| | | | | | |
|---|------------------|-----------------------|--|---|--|
| 3 | R108-9095 | 108-9095, 137-0833 | Bedknife - Razor Tool Steel - 22 High Cut | 1 | |
|---|------------------|-----------------------|--|---|--|

Detail Description: R&R Razor bedknives are manufactured from premium alloy tool steel steel and then hardened to RC48-51 to match the temper of our Razor reel blades and original equipment premium series reels. Bedknives are surface ground on the top and front edge and specially packaged for rust prevention. All R&R Bedknives now have an increased front edge grind for added life. All R&R Bedknives are guaranteed against defects in material and workmanship under normal use for the life of the part. You can expect up to double the life over standard bedknives.:

| | | | | | |
|---|------------------|------------------------------------|--|---|--|
| 3 | R137-0832 | 125-2771, 127-7132, 137-0832 | Bedknife - Razor Tool Steel - 3/8 x 22 Lowcut | 1 | |
|---|------------------|------------------------------------|--|---|--|

| | | | | | |
|---|------------------|----------|--|---|--|
| 3 | R119-4280 | 119-4280 | Bedknife - Razor Tool Steel - 22 x 3/8 Extended | 1 | |
|---|------------------|----------|--|---|--|

Detail Description: R&R Razor bedknives are manufactured from premium alloy tool steel steel and then hardened to RC48-51 to match the temper of our Razor reel blades and original equipment premium series reels. Bedknives are surface ground on the top and front edge and specially packaged for rust prevention. All R&R Bedknives now have an increased front edge grind for added life. All R&R Bedknives are guaranteed against defects in material and workmanship under normal use for the life of the part. You can expect up to double the life over standard bedknives.:

Overhaul Kits & Service Tools

All original equipment manufacturers names and part numbers are used for identification purposes only, and we are in no way implying that our products are original equipment parts. Prices subject to change without notice.



Replaces Toro Reelmaster 5610-D Parts

DPA Cutting Unit - Models 03681, 03682, 03696 & 03697
Reel & Bedknife



| Item No | R&R Part No. | OEM Part No. | Description | Qty Req | Order Quantity |
|--|------------------|---|----------------------------------|---------|----------------|
| 5 | R51-0880 | 51-0880 | Bedknife Screw Driver Tool | 0 | |
| <i>Detail Description: Easily install and remove bed knife screws with the help of a ratchet with 3/8" drive. Tool manufactured with hardened alloy steel.:</i> | | | | | |
| 6 | R110-9600 | 110-9600 | High HOC Kit | 1 | |
| <i>Detail Description: Includes 1 ea.: R120-0404, R120-0405 & 2 ea.: R112-7451, R322-16, R445722 & 4 ea.: R106-9758, R104-8300, R453011, R104-8301 & 8 ea.: R106-3925:</i> | | | | | |
| 7 | R120-7230 | 120-7230 | Overhaul Kit - Fits DPA Units | 1 | |
| <i>Detail Description: Incl 2 ea.: R108-0015, R115-7039, R119-4155, R120-5116, R120-5118, R120-5120, R3296-33, R3296-48 & 4 ea.: R106-5344:</i> | | | | | |
| 8 | R117-0975 | 117-0975 | Tool- Reel Bearing Installation | 1 | |
| Other Parts Available | | | | | |
| 70 | R32128-43 | 30-8990, 32128-43, 3290-357 | Nut - Flanged Whiz - 3/8-16 | 7 | |
| 70 | R32128-40 | 32128-40 | Nut- 3/8-16 Hx Flange | 7 | |
| 71 | R107-7433 | 107-7433 | Carrier Frame Assy | 1 | |
| 72 | R3234-5 | 3234-5, 62-3310 | Bolt - 5/16-18x3/4 Hx Ser Was HD | 4 | |
| 73 | R107-2996 | 107-2996 | Grass Shield - Front | 1 | |
| 74 | R93-6688 | 93-6688 | Decal - Warning | 1 | |
| 75 | R110-1706 | 110-1706 | Deflector | 5 | |
| 76 | R445722 | 30-8980, 32128-2, 32128-20, 32128-20 | Nut - Serrated Washer | 4 | |
| 77 | R33025-00 | 32025-00, 33025-00 | Locknut - 10mm x 1.5 Jam | 2 | |

All original equipment manufacturers names and part numbers are used for identification purposes only, and we are in no way implying that our products are original equipment parts. Prices subject to change without notice.



Replaces Toro Reelmaster 5610-D Parts

DPA Cutting Unit - Models 03681, 03682, 03696 & 03697
Reel & Bedknife



| Item No | R&R Part No. | OEM Part No. | Description | Qty Req | Order Quantity |
|-------------------------------------|------------------|--|---|---------|----------------|
| 78 | R99-3755 | 99-3755 | Spring - Bed Bar Adjusting | 2 | |
| 79 | R99-2098 | 99-2098 | Washer - Bed Bar Adjuster | 2 | |
| <i>Tech Note: Up to 2012:</i> | | | | | |
| 79 | R119-4155 | 119-4155 | Washer - Hardened | 2 | |
| <i>Tech Note: 2012 & Newer:</i> | | | | | |
| 80 | R99-2096 | 99-2096 | Screw - Bed Bar Adjustment - M10 Thrd 1 End | 2 | |
| <i>Tech Note: Up to 2012:</i> | | | | | |
| 80 | R115-7039 | 115-7039 | Screw - Adjuster - Bedbar | 2 | |
| <i>Tech Note: 2012 & Newer:</i> | | | | | |
| 81 | R32120-93 | 32120-93 | Snap Ring - HD | 2 | |
| 82 | R106-5335 | 106-5335 | Wave Washer - Reel Adjusting | 2 | |
| 83 | R106-5344 | 106-5344 | Bushing - Flanged and Keyed | 4 | |
| 84 | R106-5363 | 106-5363 | Shaft - Adjusting - Bed Bar - Stainless | 2 | |
| <i>Tech Note: Up to 2012:</i> | | | | | |
| 85 | R114-9396 | 114-9396, 119-4067 | Bolt - Hex HD 5/16-18 x 3/8 | 2 | |
| 85 | R322-26 | 322-26 | Bolt - Hx HD 5/16-18 x 3/8 | 2 | |
| 86 | R99-2097 | 99-2097 | Detent - Bed Bar Adjuster | 2 | |
| 87 | R3231-25 | 01-173-0610, 30-9970, 3231-25, 3231-3, 900064P | Bolt - Carriage 3/8-16 x 1-1/4 | 4 | |

All original equipment manufacturers names and part numbers are used for identification purposes only, and we are in no way implying that our products are original equipment parts. Prices subject to change without notice.



Replaces Toro Reelmaster 5610-D Parts

DPA Cutting Unit - Models 03681, 03682, 03696 & 03697
Reel & Bedknife



| Item No | R&R Part No. | OEM Part No. | Description | Qty Req | Order Quantity |
|---------|---------------------|---|-----------------------------------|---------|----------------|
| 88 | R110-4069 | 110-4069 | Bracket | 1 | |
| 89 | R107-7400 | 107-7400 | Pin - Lynch | 1 | |
| 90 | R110-4058 | 110-4058 | Bracket - Chain | 1 | |
| 91 | R107-3258 | 107-3258 | Frame | 1 | |
| 92 | R107-7779-01 | 107-7779-01 | Grass Shield Assy - Rear | 1 | |
| 93 | R107-7773 | 107-7773 | Bolt - Soc HD Cap 5/16-18 x 2-1/2 | 1 | |
| 94 | R3256-74 | 3256-74 | Washer - Flat | 1 | |
| 95 | R322-14 | 01-150-0830, 01-178-0524, 30-8900, 322-14 | Bolt - Hex HD 5/16-18 x 3 GR5 | 1 | |
| 96 | R3296-33 | 3296-33 | Locknut - 5/8-18 ESNA Jam | 2 | |
| 97 | R106-9623 | 106-9623 | Bolt - Bedbar | 2 | |
| 98 | R453017 | 01-166-0050, 01-166-0240, 01-166-0800, 24-13-AD, 24-14-AD, 32-8110, 3256-26, 3256-6, 453017, 69-8980, 87-7270 | Washer - Flat 1/2 | 2 | |
| 98 | R455012 | 3256-26, 41-8440 | Washer - Flat 1/2 x 3/4 | 1 | |
| 98 | R87-7270-01 | 87-7270 | Washer - Flat 1/2 | 1 | |
| 99 | R61-1950 | 61-1950 | Washer - Nylon - Bed Bar | 4 | |

All original equipment manufacturers names and part numbers are used for identification purposes only, and we are in no way implying that our products are original equipment parts. Prices subject to change without notice.



Replaces Toro Reelmaster 5610-D Parts

DPA Cutting Unit - Models 03681, 03682, 03696 & 03697
Reel & Bedknife



| Item No | R&R Part No. | OEM Part No. | Description | Qty Req | Order Quantity |
|---------|---------------------|---|-------------------------------------|---------|----------------|
| 100 | R56-9520 | 56-9520 | Bushing - Nyliner | 2 | |
| 101 | R107-3273-01 | 107-3273-01 | Bed Bar - Fits OEM Units Only | 1 | |
| 101 | R150904 | | Bed Bar - Fits R&R Units Only | 1 | |
| 103 | R150476 | 3-3816, 3-6462, 57-4910 | Screw - Bedknife 5/16-18 x 5/8 | 8 | |
| 104 | R107-2979 | 107-2979 | Bolt - Shoulder | 6 | |
| 105 | R94-2703 | 94-2703 | Plug - Plastic Spindle Housing | 1 | |
| 106 | R101526 | 01-150-0970, 01-178-0620, 20-53-AGD, 321-11, 3224-8, 323-11, 323-12, 323-31, 323-4, 323-47 | Bolt - Hex HD 3/8-16 x 2-1/2 GR5 | 2 | |
| 107 | R108-4269-01 | 108-4269-01 | Weight | 1 | |
| 108 | R104-8300 | 104-8300, 104-8300 , 119-4041 | Locknut - 5/16-18 Flanged Y/Zinc | 4 | |
| 109 | R106-3925 | 106-3925 | Shim - 1/4 - Rear Roller HOC | 4 | |
| 110 | R106-3924 | 106-3924 | Bracket - Rear Roller | 2 | |
| 111 | RP17609-2 | 106-9758, 3230-7 | Bolt - Carriage 5/16-18 x 1-1/2 | 4 | |
| 112 | R112-6967 | 112-6967 | O-Ring | 2 | |

All original equipment manufacturers names and part numbers are used for identification purposes only, and we are in no way implying that our products are original equipment parts. Prices subject to change without notice.



Replaces Toro Reelmaster 5610-D Parts

DPA Cutting Unit - Models 03681, 03682, 03696 & 03697
Reel & Bedknife



| Item No | R&R Part No. | OEM Part No. | Description | Qty Req | Order Quantity |
|---------|--------------|--|---------------------------------------|---------|----------------|
| 113 | R323-6 | 01-150-0010, 01-178-0608, 20-47-AD, 20-47-AGD, 3224-2, 323-6, 49-3510, 908034P, 908332 | Bolt - Hex HD 3/8-16 x 1 GR5 YZ | 2 | |
| 114 | R170714 | 302-34, 302-39, 62-3520 | Fitting - Pressure Relief | 2 | |
| 115 | R302-5 | 21-6010, 302-11, 302-37, 302-47, 302-5, 302-57, 302-58, 302-6, 31-0300, 32-9660, 60-0800, 62-3880, 92-4181 | Fitting - Grease | 2 | |
| 116 | R107-7447 | 107-7447 | Set Screw - 1/4 x 1-1/4 Sq HD | 1 | |
| 117 | R107-2954 | 107-2954 | Nut - Bearing Adjuster | 1 | |
| 118 | R108-9083 | 108-9083 | Side Plate - RH - Fits OEM Units Only | 1 | |
| 118 | R150903 | | Side Plate - RH - Fits R&R Units Only | 1 | |
| 119 | R108-9082 | 108-9082 | Side Plate - LH - Fits OEM Units Only | 1 | |
| 119 | R150902 | | Side Plate - LH - Fits R&R Units Only | 1 | |
| 120 | R93-2489 | 93-2489 | Bearing - Reel | 2 | |

All original equipment manufacturers names and part numbers are used for identification purposes only, and we are in no way implying that our products are original equipment parts. Prices subject to change without notice.



Replaces Toro Reelmaster 5610-D Parts

DPA Cutting Unit - Models 03681, 03682, 03696 & 03697
Reel & Bedknife



| Item No | R&R Part No. | OEM Part No. | Description | Qty Req | Order Quantity |
|---------|--------------|--|-------------------------------------|---------|----------------|
| 121 | R107-4028 | 105-6757, 107-4028 | Seal - Grease | 2 | |
| 122 | R92-2601 | 92-2601 | Snap Ring | 2 | |
| 123 | R107-3276 | 107-3276 | Insert - Threaded - LH - 9 Tooth | 1 | |
| 124 | R107-3275 | 107-3275 | Insert - Threaded - RH - 9 Tooth | 1 | |
| 125 | R107-4026 | 107-4026 | Bolt - Hex Tap 3/8-16 x 3-3/4 | 2 | |
| 126 | R453011 | 01-166-0100, 01-166-0120, 01-166-0270, 01-166-0500, 01-166-0600, 01-166-0620, 132-4593, 2356-3, 237-12, 24-10-AD, 24-11-AD, 24-11-BD, 24-12-AD, 24-12-BD, 30-9310, 32-8190, 3256-24, 3256-3, 3256-36, 3256-4, 453011, 47-9950, 48-9220, 513458, 7-0052 | Washer - Flat 3/8 SAE Y/Zinc | 4 | |
| 127 | R322-16 | 322-16, Apr-00 | Bolt - Hex HD 5/16-18 x 1-1/8 | 2 | |
| 128 | R107-2952 | 107-2952 | Bracket - Front Roller | 2 | |

All original equipment manufacturers names and part numbers are used for identification purposes only, and we are in no way implying that our products are original equipment parts. Prices subject to change without notice.



Replaces Toro Reelmaster 5610-D Parts

DPA Cutting Unit - Models 03681, 03682, 03696 & 03697
Reel & Bedknife



| Item No | R&R Part No. | OEM Part No. | Description | Qty Req | Order Quantity |
|-------------------------------------|---------------------|--|-----------------------------------|---------|----------------|
| 129 | R3231-4 | 01-157-0440, 01-173-0612, 3231-4 | Bolt - Carriage 3/8-16 x 1-1/2 | 2 | |
| 130 | R108-4284 | 108-4284 | Shaft - Support | 1 | |
| 131 | R108-4279 | 108-4279 | Spacer - Frame | 2 | |
| 132 | R93-2877 | 93-2877 | Bushing - Flanged | 2 | |
| 133 | R67-9410 | 67-9410 | Washer - Clevis Pin | 1 | |
| 134 | R3234-19 | 3234-19 | Bolt - Hex Washer 3/8-16x1-3/4 | 2 | |
| 135 | R106-9618 | 106-9618 | Bushing - Rubber | 2 | |
| 136 | R110-4088-03 | 110-4088-03, 119-8010-03 | Kickstand | 1 | |
| 137 | R108-4213 | 108-4213 | Bracket- HOC - LH - Groomer | 1 | |
| 138 | R108-4214 | 108-4214 | Bracket-HOC - RH - Groomer | 1 | |
| 139 | R106-9758 | | Bolt - Carriage 5/16x4 | 4 | |
| 140 | R120-5116 | 120-5116 | Washer - Wave | 2 | |
| <i>Tech Note: 2012 & Newer:</i> | | | | | |
| 141 | R110-4079 | 110-4079 | Spring | 1 | |
| 142 | R92-2762 | 92-2762 | Pin - Snap | 1 | |
| 143 | R115-2007 | 107-7437, 115-2007 | Rod - Spring | 1 | |
| 145 | R443818 | 01-191-0813, 3218-18, 3218-5 | Nut - 1/2-13 Hex Jam Zinc | 3 | |
| 146 | R99-8662 | 99-8662 | Tube - Spring | 1 | |

All original equipment manufacturers names and part numbers are used for identification purposes only, and we are in no way implying that our products are original equipment parts. Prices subject to change without notice.



Replaces Toro Reelmaster 5610-D Parts

DPA Cutting Unit - Models 03681, 03682, 03696 & 03697
Reel & Bedknife



| Item No | R&R Part No. | OEM Part No. | Description | Qty Req | Order Quantity |
|---|------------------|--|------------------------------|---------|----------------|
| 147 | R104-3396 | 104-3396 | Bolt - Hex HD 3/8-16 x 2-1/4 | 1 | |
| 148 | R120-0404 | 120-0404 | Bracket- High HOC - LH | 1 | |
| <i>Detail Description: Fits 2011 & Newer:</i> | | | | | |
| 149 | R120-0405 | 120-0405 | Bracket - High HOC - RH | 1 | |
| <i>Detail Description: Fits 2011 & Newer:</i> | | | | | |
| 150 | R125-2796 | 125-2796 | Bracket- Front HOC | 2 | |
| <i>Detail Description: Fits 2013 & Newer:</i> | | | | | |
| 151 | R108-0015 | 108-0015 | Washer - Flat | 2 | |
| 152 | R120-5120 | 120-5120 | Spring - Compression | 2 | |
| 153 | R3296-48 | 119-4039, 32146-7, 3296-34, 3296-48 | Locknut - 7/16-14 ESNA | 2 | |
| 154 | R120-5118 | 120-5118 | Shaft - Adjuster | 2 | |
| <i>Detail Description: 2012 & Newer:</i> | | | | | |

All original equipment manufacturers names and part numbers are used for identification purposes only, and we are in no way implying that our products are original equipment parts. Prices subject to change without notice.