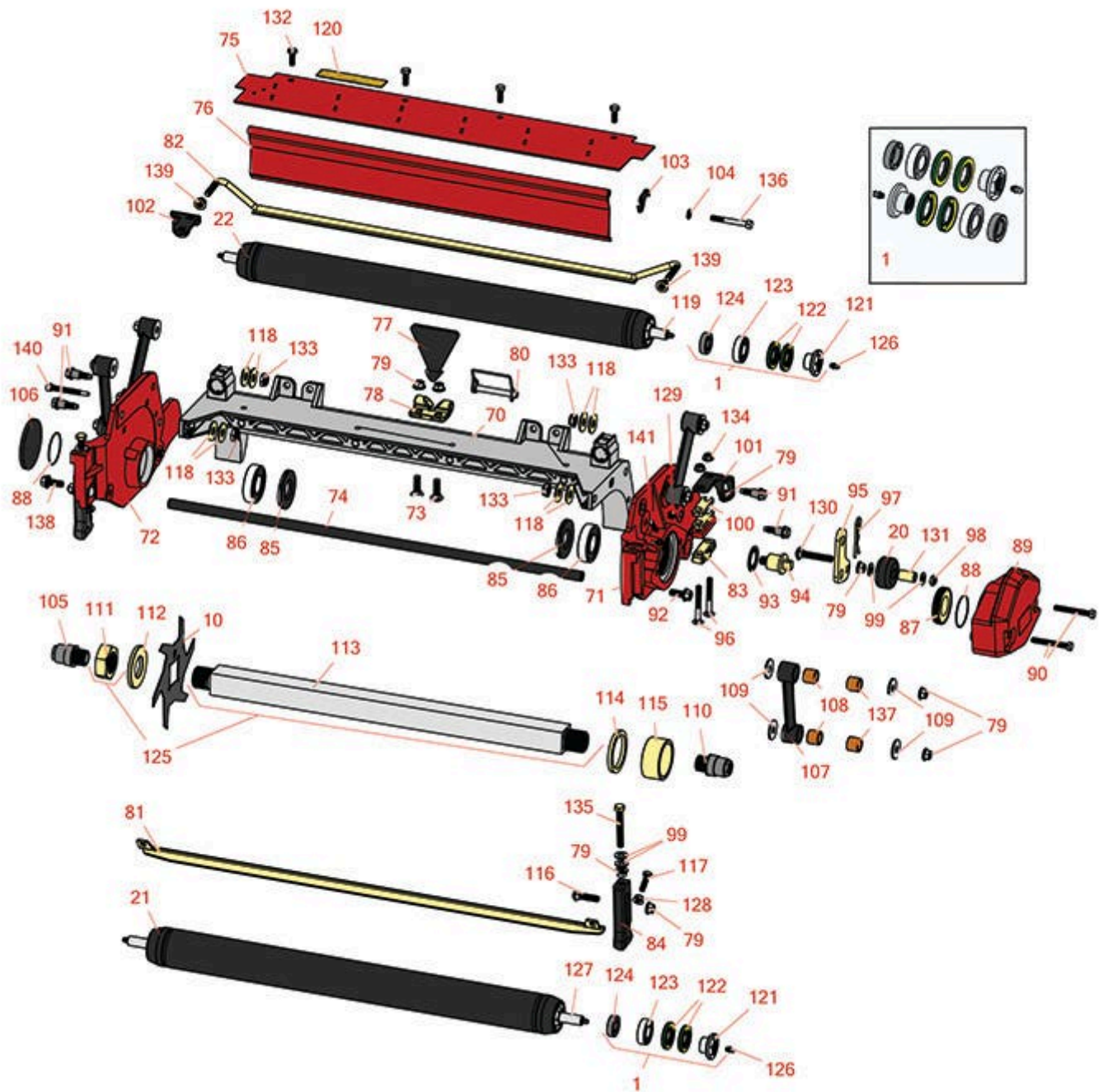




# Replaces Toro Reelmaster 3100-D Parts

27in DPA Verti-Cut Unit - Model 03184

Verti-Cut Reel & Frame



All original equipment manufacturers names and part numbers are used for identification purposes only, and we are in no way implying that our products are original equipment parts. Prices subject to change without notice.



# Replaces Toro Reelmaster 3100-D Parts

27in DPA Verti-Cut Unit - Model 03184

Verti-Cut Reel & Frame



Item No	R&R Part No.	OEM Part No.	Description	Qty Req	Order Quantity
<b>Overhaul Kits</b>					
1	<b>R114-5430</b>	114-5430	Overhaul Kit - Roller	0	
<i>Tech Note: Includes 4 ea.: R112-7494 Seals; 2 ea.: R302-5 Grease Zerks, R114-3717 Seals, R112-5290 Bearings &amp; R114-3745 Locknuts:</i>					
<b>Verti-Cut Blades</b>					
10	<b>R93-3038-03</b>	93-3038, 93-3038-03	Blade - Vertical Mower 1/16x7.25	19	
10	<b>R106-8625</b>	106-8625	Blade - Carbide Tip	19	
<b>R&amp;R Rollers</b>					
20	<b>R108-4293</b>	108-4293	Roller - Verti-Cut	2	
21	<b>R117-3759</b>	117-3759, 137-6124	Roller Assy - 27" Front Solid 2 1/2	1	
22	<b>R117-3756</b>	117-3756, 137-6123	Roller Assy - 27" Rear Solid 2 1/2	1	
<b>Other Parts Available</b>					
70	<b>R112-8935</b>	112-8935	Frame - Center - 27 in Unit	1	
71	<b>R117-3764</b>	117-3764	Plate-Side - LH - Verticut	1	
72	<b>R117-3763</b>	117-3763	Plat E- Side - RH - Verticut	1	
73	<b>R3231-25</b>	01-173-0610, 30-9970, 3231-25, 3231-3, 900064P	Bolt - Carriage 3/8-16 x 1-1/4	2	
74	<b>R112-8936</b>	112-8936	Tube- Support - 27 in Units	1	
75	<b>R112-8942</b>	112-8942	Front Grass Shield Assy - 27 in Units	1	
76	<b>R112-8944-01</b>	112-8944-01	Rear Grass Shield Assy - 27 in Units	1	

All original equipment manufacturers names and part numbers are used for identification purposes only, and we are in no way implying that our products are original equipment parts. Prices subject to change without notice.



# Replaces Toro Reelmaster 3100-D Parts

27in DPA Verti-Cut Unit - Model 03184

Verti-Cut Reel & Frame



Item No	R&R Part No.	OEM Part No.	Description	Qty Req	Order Quantity
77	<b>R110-4088-03</b>	110-4088-03, 119-8010-03	Kickstand	1	
78	<b>R110-4058</b>	110-4058	Bracket - Chain	1	
79	<b>R104-8301</b>	104-8301, 104-9301, 109-6658, 133-7570	Locknut - 3/8-16 Nylon Flanged	16	
80	<b>R107-7400</b>	107-7400	Pin - Lynch	1	
81	<b>R117-3753-03</b>	117-3753-03	Scraper-Full Front Roller 2 1/2 in	1	
82	<b>R117-0993</b>	117-0993	Scraper Rod Assy - 27 in	1	
83	<b>R106-3924</b>	106-3924	Bracket - Rear Roller	1	
84	<b>R107-2952</b>	107-2952	Bracket - Front Roller	1	
85	<b>R107-4028</b>	105-6757, 107-4028	Seal - Grease	2	
86	<b>R93-2489</b>	93-2489	Bearing - Reel	2	
87	<b>R107-2954</b>	107-2954	Nut - Bearing Adjuster	1	
88	<b>R112-6967</b>	112-6967	O-Ring	2	
89	<b>R119-0614-01</b>	119-0614-01	Weight	1	
90	<b>R101526</b>	01-150-0970, 01-178-0620, 101526, 20-53-AGD, 321-11, 3224-8, 323-11, 323-12, 323-31, 323-4, 323-47	Bolt - Hex HD 3/8-16 x 2-1/2 GR5	2	
91	<b>R107-2979</b>	107-2979	Bolt - Shoulder	6	

All original equipment manufacturers names and part numbers are used for identification purposes only, and we are in no way implying that our products are original equipment parts. Prices subject to change without notice.



# Replaces Toro Reelmaster 3100-D Parts

27in DPA Verti-Cut Unit - Model 03184

Verti-Cut Reel & Frame



Item No	R&R Part No.	OEM Part No.	Description	Qty Req	Order Quantity
92	<b>R3234-11</b>	3234-11	Bolt - Hex Washer HD	2	
93	<b>R3254-21</b>	3254-21	Washer - 1 in Interl Star	2	
94	<b>R108-4289</b>	108-4289	Pin - Roller Mounting	2	
95	<b>R108-4286</b>	108-4286	Bracket - Adj	2	
96	<b>R3230-7</b>	25-33-AGD, 3230-9	Bolt - Carriage 5/16-18 x 2 1/2	4	
97	<b>R3290-355</b>	01-159-0050, 3290-355, 58-5370	Pin - Bridge - Snap	2	
98	<b>R3296-59</b>	3296-59	Locknut - 3/8-16 Nylon Jam	2	
99	<b>R453011</b>	01-166-0100, 01-166-0120, 01-166-0270, 01-166-0500, 01-166-0600, 01-166-0620, 132-4593, 2356-3, 237-12, 24-10-AD, 24-11-AD, 24-11-BD, 24-12-AD, 24-12-BD, 30-9310, 32-8190, 3256-24, 3256-3, 3256-36, 3256-4, 453011, 47-9950, 48-9220, 513458, 7-0052	Washer - Flat 3/8 SAE Y/Zinc	8	
100	<b>R119-0626</b>	119-0626	Shim - Roller - 1/4 in - Slotted	4	
101	<b>R107-3279</b>	107-3279	Bracket - Scraper - LH	1	

All original equipment manufacturers names and part numbers are used for identification purposes only, and we are in no way implying that our products are original equipment parts. Prices subject to change without notice.



# Replaces Toro Reelmaster 3100-D Parts

27in DPA Verti-Cut Unit - Model 03184

Verti-Cut Reel & Frame



Item No	R&R Part No.	OEM Part No.	Description	Qty Req	Order Quantity
102	<b>R107-3281</b>	107-3281	Bracket - Scraper - RH	1	
103	<b>R108-4961</b>	108-4961	Tab - Stop - Shield	1	
104	<b>R3256-74</b>	3256-74	Washer - Flat	1	
105	<b>R108-4978</b>	108-4978, 131-0516	Insert - RH - Verti-Cut Shaft	1	
106	<b>R94-2703</b>	94-2703	Plug - Plastic Spindle Housing	1	
107	<b>R16-9759</b>	16-9759	Link Assy	4	
108	<b>R93-6981</b>	93-6981	Spacer	8	
109	<b>R93-8806</b>	93-8806	Washer-Hardened	16	
110	<b>R108-4977</b>	108-4977, 131-0515	Insert - LH - Verti-Cut Shaft	1	
111	<b>R3220-25</b>	3220-25	Nut - Jam 1-3/8-12	1	
112	<b>R105-0173</b>	105-0173	Washer - Verticut Shaft 1/4 in	1	
113	<b>R117-3760</b>	117-3760	Shaft Only - V-Cut	1	
114	<b>R105-0177</b>	105-0177	Spacer - Verticut Shaft 1/4 in	1	
115	<b>R105-0172</b>	105-0172	Spacer - Verticut Shaft 1.2 in	18	
116	<b>R3231-4</b>	01-157-0440, 01-173-0612, 3231-4	Bolt - Carriage 3/8-16 x 1-1/2	2	
117	<b>R322-16</b>	322-16, Apr-00	Bolt - Hex HD 5/16-18 x 1-1/8	2	
118	<b>R453013</b>	01-166-0140, 01-166-0700, 3256-5, 80-4850	Washer - Flat 7/16	8	
119	<b>R112-8918</b>	112-8918	Shaft - Long - Rear Roller - 27" Units	1	

All original equipment manufacturers names and part numbers are used for identification purposes only, and we are in no way implying that our products are original equipment parts. Prices subject to change without notice.



# Replaces Toro Reelmaster 3100-D Parts

27in DPA Verti-Cut Unit - Model 03184

Verti-Cut Reel & Frame



Item No	R&R Part No.	OEM Part No.	Description	Qty Req	Order Quantity
120	<b>R93-6688</b>	93-6688	Decal - Warning	1	
121	<b>R114-3745</b>	114-3745, 114-5411	Locknut - Bearing - Stainless	2	
122	<b>R112-7494</b>	112-7494	Seal	4	
123	<b>R112-5290</b>	112-5290, 251--346, 251-346, 72-5430	Bearing - Stainless	2	
124	<b>R114-3717</b>	114-3717	Seal	2	
125	<b>R119-0625</b>	119-0625	Shaft Assy - V-Cut	1	
126	<b>R302-5</b>	21-6010, 302-11, 302-37, 302-47, 302-5, 302-57, 302-58, 302-6, 31-0300, 32-9660, 60-0800, 62-3880, 92-4181	Fitting - Grease	2	
127	<b>R117-0957</b>	117-0957	Shaft - Front Roller - 27" Units	1	
128	<b>R445722</b>	30-8980, 32128-2, 32128-20, 32128-20, 445722	Nut - Serrated Washer	2	
129	<b>R170714</b>	302-34, 302-39, 62-3520	Fitting - Pressure Relief	2	
130	<b>R3231-7</b>	3231-33, 3231-7	Bolt - Carriage 3/8-16 x 2-1/4	2	

All original equipment manufacturers names and part numbers are used for identification purposes only, and we are in no way implying that our products are original equipment parts. Prices subject to change without notice.



# Replaces Toro Reelmaster 3100-D Parts

27in DPA Verti-Cut Unit - Model 03184

Verti-Cut Reel & Frame



Item No	R&R Part No.	OEM Part No.	Description	Qty Req	Order Quantity
131	<b>R59-2580</b>	59-2580	Spacer - Wheel	2	
132	<b>R3234-7</b>	3234-7	Bolt - Hex Washer HD 5/16-18 x 5/8	4	
133	<b>R3296-28</b>	119-4154, 140-9234, 32127-34, 32128-7, 32128-8, 32136-7, 3296-28	Nut - 1/2-20 ESNA Jam	4	
134	<b>R104-8300</b>	104-8300, 104-8300 , 119-4041	Locknut - 5/16-18 Flanged Y/Zinc	4	
135	<b>R112-7451</b>	100-9429, 112-7451	Bolt - Hex Tap 3/8-16 x 2-3/4	2	
136	<b>R322-14</b>	01-150-0830, 01-178-0524, 30-8900, 322-14	Bolt - Hex HD 5/16-18 x 3 GR5	1	
137	<b>R94-8945</b>	94-8945	Bushing - Bronze - Link Bar	8	
138	<b>R323-6</b>	01-150-0010, 01-178-0608, 20-47-AD, 20-47-AGD, 3224-2, 323-6, 49-3510, 908034P, 908332	Bolt - Hex HD 3/8-16 x 1 GR5 YZ	2	
139	<b>R32128-43</b>	30-8990, 32128-43, 3290-357	Nut - Flanged Whiz - 3/8-16	2	
140	<b>R107-7773</b>	107-7773	Bolt - Soc HD Cap 5/16-18 x 2-1/2	1	
141	<b>R107-7447</b>	107-7447	Set Screw - 1/4 x 1-1/4 Sq HD	2	

All original equipment manufacturers names and part numbers are used for identification purposes only, and we are in no way implying that our products are original equipment parts. Prices subject to change without notice.