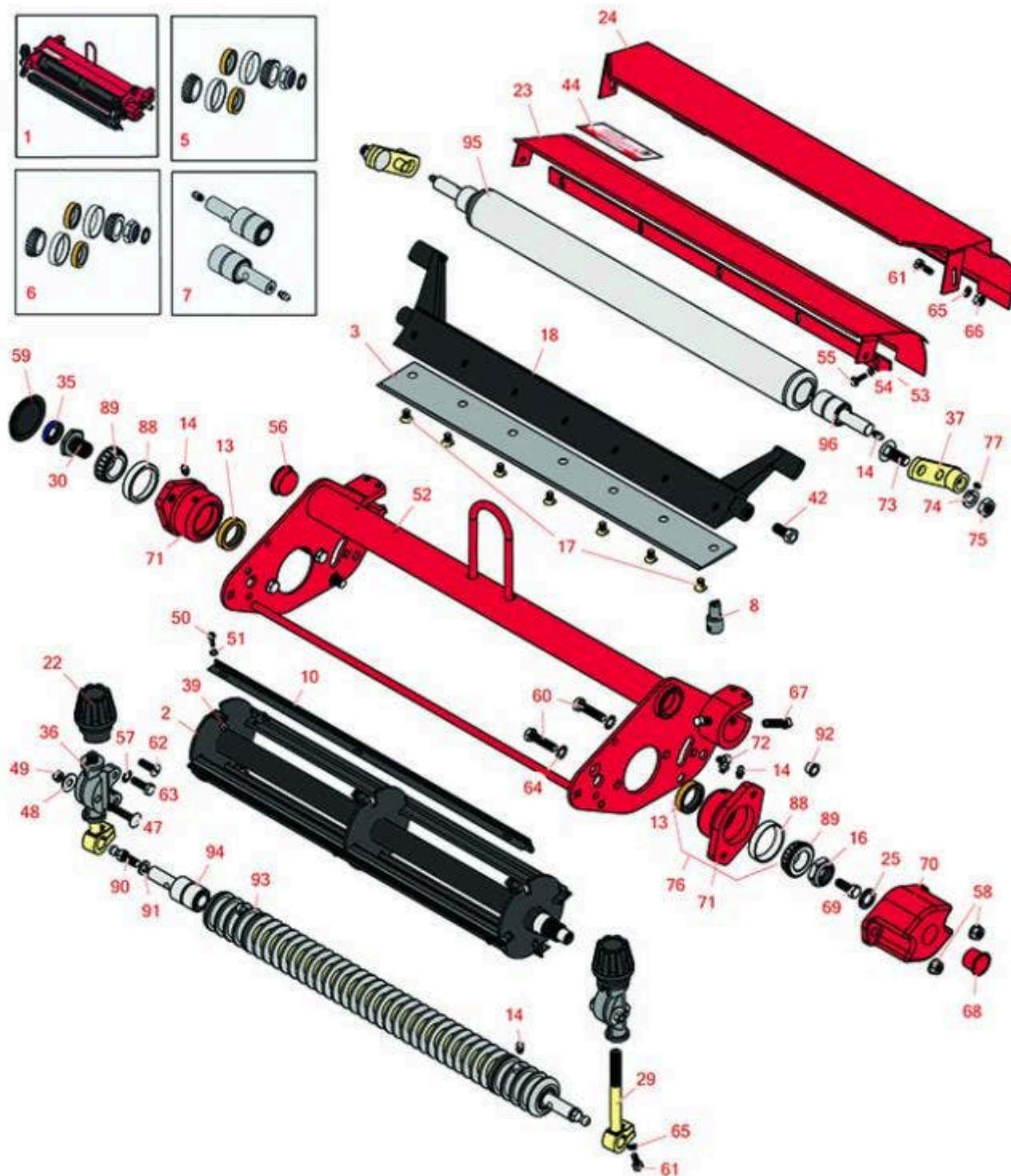




# Replaces Toro Greensmaster 3 Parts

Brush Reel Unit - R&R Special

Brush Reel & Bedknife



All original equipment manufacturers names and part numbers are used for identification purposes only, and we are in no way implying that our products are original equipment parts. Prices subject to change without notice.



# Replaces Toro Greensmaster 3 Parts

Brush Reel Unit - R&R Special

Brush Reel & Bedknife



Item No	R&R Part No.	OEM Part No.	Description	Qty Req	Order Quantity
---------	--------------	--------------	-------------	---------	----------------

## Complete Brush Reel Unit

1	R150205		Complete Brush Reel Unit	0	
---	---------	--	--------------------------	---	--

**Tech Note:** R&R Brush Reel Units complete with: R101480 Brush Reel, R94-6395 Thin Bedknife, R21-6540 Solid Front Roller & R21-8450 Solid Rear Roller:

**Detail Description:** R&R Products Brush Reels are great for greens maintenance to clean sand and other debris left on grass surfaces after top dressing. If left on the turf, this sand and debris cause dulling and excessive wear on mowing reels and bed knives. However, with the use of R&R Brush Reels, this sand and other debris is easily swept into conventional grass baskets.<BR><BR>R&R Brush Reels are also used to stand turf up before mowing to give a cleaner, more uniform, and truer putting surface.<BR><BR>Equipped with four replaceable polyethylene brushes mounted on a metal frame, simply replace regular mowing reels with R&R Brush Reels and adjust bed knives to clear the brushes. The height of cut should be set to the top of the grass blades or slightly below.<BR><BR>**SUGGESTED SETTING**<BR>Normal Operation - Use bed knife with grass basket in place<BR>Bed Knife to Brush Reel - 1/16 in to 1/8 in clearance<BR>Brush Reel Height Adjustment - 1/32 in lower than cutting height<BR><BR>**SUGGESTED USAGE**<BR>Verticutting<BR>Dew Removal<BR>Leaf Cleaning Up<BR>Thatch Prevention<BR>Prior to Overseeding<BR>Grooming Before Mowing<BR>Removal of Excessive Top Dressing:

## R&R Brush Reel

2	R150480		Brush Reel	1	
---	---------	--	------------	---	--

**Detail Description:** R&R Products Brush Reels are an exciting concept in greens maintenance to clean sand and other debris left on grass surfaces after top dressing. If left on the turf, this sand and debris can cause dulling and excessive wear on mowing reels and bed knives. However, with the use of R&R Brush Reels, sand and debris are easily swept into conventional grass baskets. R&R Brush Reels are also used to stand turf up before mowing to give a cleaner, more uniform and truer putting surface. Designed with four replaceable brushes mounted in a metal frame, simply replace regular mowing reels with R&R Brush Reels and adjust bedknife to clear the brushes. The height of cut should be set to the top of the grass blades or slightly below. \*Remove bedknife for the removal of pine needles.<BR><BR>**SUGGESTED USAGE:** Verticutting - Dew Removal - Leaf Clean Up - Thatch Prevention Prior to Overseeding - Grooming before Mowing - Removal of Excessive Top Dressing:

## R&R Bedknives, Lifetime Guaranteed

3	R94-6395	17-7040, 19-8880, 62-2510, 63-8500, 94-6395	Bedknife - Low Cut 3/16"-1" HOC	1	
---	----------	---	------------------------------------	---	--

All original equipment manufacturers names and part numbers are used for identification purposes only, and we are in no way implying that our products are original equipment parts. Prices subject to change without notice.



## Replaces Toro Greensmaster 3 Parts

Brush Reel Unit - R&R Special

Brush Reel & Bedknife



Item No	R&R Part No.	OEM Part No.	Description	Qty Req	Order Quantity
---------	--------------	--------------	-------------	---------	----------------

*Detail Description: R&R Bedknives are manufactured from high carbon-boron alloy steel and then hardened to RC46-49 to match the temper of our reel blades and original equipment reels. Bedknives are surface ground on the top and front edge and straightened three times before being packaged with oil for rust prevention. All R&R Bedknives now have an increased front edge grind for added life. All R&R Bedknives are guaranteed against defects in material and workmanship under normal use for the life of the part.:*

### Overhaul Kits & Service Tools

5	<b>R255-300</b>	107-1590	Overhaul Kit - Cutting Unit	0
---	-----------------	----------	-----------------------------	---

*Detail Description: Includes 2 ea: R253-96 Seals, R254-72 Cups, R254-94 Bearings; 1 ea: R253-61 Seal, R32127-46 Locknut:*

6	<b>R107-1598</b>		Overhaul Kit - Cutting Unit	0
---	------------------	--	-----------------------------	---

*Detail Description: Includes 2 ea.: R104-3388 Seals, R254-72 Bearing Cups & R254-94 Bearings; 1 ea: R253-61 Seal & R32127-46 Locknut:*

7	<b>R107-1588</b>	107-1588	Overhaul Kit - Roller	0
---	------------------	----------	-----------------------	---

*Detail Description: Includes 2 ea.: R302-5 Grease Fittings & R52-3180 Bearings:*

8	<b>R51-0880</b>	51-0880	Bedknife Screw Driver Tool	0
---	-----------------	---------	----------------------------	---

*Detail Description: Easily install and remove bed knife screws with the help of a ratchet with 3/8" drive. Tool manufactured with hardened alloy steel.:*

### Other Parts Available

10	<b>R150481</b>		Brush Assy - Brush Reel	4
----	----------------	--	-------------------------	---

13	<b>R104-3388</b>	104-3388	Seal - Double Lip Bearing Housing	2
----	------------------	----------	-----------------------------------	---

All original equipment manufacturers names and part numbers are used for identification purposes only, and we are in no way implying that our products are original equipment parts. Prices subject to change without notice.



## Replaces Toro Greensmaster 3 Parts

*Brush Reel Unit - R&R Special*

*Brush Reel & Bedknife*



Item No	R&R Part No.	OEM Part No.	Description	Qty Req	Order Quantity
14	R302-5	21-6010, 302-11, 302-37, 302-47, 302-5, 302-57, 302-58, 302-6, 31-0300, 32-9660, 60-0800, 62-3880, 92-4181	Fitting - Grease	6	
16	R32127-46	32127-46, 3296-60	Locknut	1	
17	R150477	57-4910	Screw - Bedknife 5/16-18 x 1/2	7	
18	R10-4930	10-4930, 10-4930-01	Bed Bar	1	
22	R65-8600	10-5040, 65-8600	Knob - Height Adjusting	2	
23	R27-2620	Oct-40	Shield - Grass Deflector	1	
24	R36-7190	36-7190	Deflector - Grass	1	
25	R253-61	253-61	Seal - Oil Reel	1	
29	R10-5010	10-5010	Screw - Roller Adjustment	2	
30	R10-5100	10-5100	Nut - Splined 1-1/8 Long	1	
30	R93-1394	93-1394	Nut - Splined RH Thrd .812 Long	1	
35	R353-585	353-585, 353-587, 354-34, 72-4380, 75-1210, 75-1270, 92-8863, 92-8864	Seal - High Pressure - Reel Motor	1	

All original equipment manufacturers names and part numbers are used for identification purposes only, and we are in no way implying that our products are original equipment parts. Prices subject to change without notice.



## Replaces Toro Greensmaster 3 Parts

*Brush Reel Unit - R&R Special*

*Brush Reel & Bedknife*



Item No	R&R Part No.	OEM Part No.	Description	Qty Req	Order Quantity
36	<b>R10-5060</b>	10-5060	Bracket - Roller Adj	2	
37	<b>R27-2650</b>	27-2650	Height Adjustment Assy	2	
39	<b>R3296-9</b>	32127-17, 3296-9	Locknut - Comb	12	
42	<b>R315298</b>	217-74, 31-1070	Bolt - Bed Bar	2	
44	<b>R354083</b>	104-7729, 354083	Decal - Danger	1	
47	<b>R441674</b>	01-173-0514, 01-173-0516, 3-7253, 3230-5	Screw - 5/16-18 x 1-3/4 Carriage	2	
48	<b>R453009</b>	01-166-0400, 24-10-BD, 24-9-AD, 32-9650, 3256-2, 3256-23, 3256-3, 3256-67, 3290-217, 3556-3, 4-2390, 7-0152	Washer - Flat 5/16 SAE	6	
49	<b>R32153-3</b>	119-4038, 22-12-AJFD, 32127-35, 32146-5, 32153-3, 3296-18, 3296-29, 3296-31, N/A	Locknut - 5/16-18 ESNA Zinc	2	
50	<b>R150425</b>		Bolt - Hex HD 8-32 x 5/8	12	
51	<b>R150426</b>	3256-21	Washer - 8 SAE	12	

All original equipment manufacturers names and part numbers are used for identification purposes only, and we are in no way implying that our products are original equipment parts. Prices subject to change without notice.



## Replaces Toro Greensmaster 3 Parts

*Brush Reel Unit - R&R Special*

*Brush Reel & Bedknife*



Item No	R&R Part No.	OEM Part No.	Description	Qty Req	Order Quantity
52	<b>R70-1100</b>	36-7230, 70-1100, 70-1100-01	Frame	1	
53	<b>R36-7260</b>	36-7260	Bar - Cut Off Grass Shield	1	
54	<b>R3256-14</b>	24-7-BD, 32125-2, 3256-14, 3256-51, 51-2170	Washer - 10 Flat	5	
55	<b>R32144-73</b>	104-2065, 32144-73	Screw - Machine Hex Washer Head	5	
56	<b>R285-14</b>		Plug - Pipe Frame	2	
57	<b>R3255-8</b>	3255-8	Washer - Lock 5/16 Ext	2	
58	<b>R3296-39</b>	32127-25, 32128-36, 3290-357, 3296-17, 3296-22, 3296-39, 915663P, 99-7443	Locknut - 3/8-16 Nylon	2	
59	<b>R150485</b>	2410-30	Cap - Protective Bearing Housing	1	
60	<b>R323-53</b>	323-53, 57-3210	Bolt - Hex HD 3/8-16 x 1-3/4	4	
60	<b>R3290-316</b>	3290-316, 57-3210	Bolt - Hex Tap 3/8-16 x 1-1/2	4	
61	<b>R321-4</b>	01-150-1030, 01-178-0406, 20-3-AGD, 321-4, 3222-1	Bolt - Hex HD 1/4-20 x 3/4	4	
61	<b>R321-5</b>	321-31, 321-5	Bolt - Hex HD 1/4-20 x 7/8	2	

All original equipment manufacturers names and part numbers are used for identification purposes only, and we are in no way implying that our products are original equipment parts. Prices subject to change without notice.



## Replaces Toro Greensmaster 3 Parts

*Brush Reel Unit - R&R Special*

*Brush Reel & Bedknife*



Item No	R&R Part No.	OEM Part No.	Description	Qty Req	Order Quantity
62	<b>R32108-20</b>	32108-20	Screw - Flat HD Cntrsunk	2	
63	<b>R322-5</b>	01-178-0508, 20-26-AD, 20-26-AGD, 30-9000, 322-5, 513341, 519755, 908019P, N/A	Bolt - Hex HD 5/16-18 x 1	2	
64	<b>R3255-9</b>	3255-9	Washer - Lock 3/8 Ext. Star	4	
65	<b>R3253-3</b>	01-166-0070, 01-166-0410, 23-9-GD, 24-7150, 3253-3, 3256-1, 352-167	Washer - Lock 1/4	4	
66	<b>R301504</b>	2296-42, 301504, 32127-24, 32128-33, 32146-17, 3296-16, 3296-42, 3296-42 , 915661P	Locknut - ESNA 1/4-20	2	
67	<b>R3243-13</b>	3243-13	Screw - Bed Bar Adjusting	4	
68	<b>R12-0460</b>	12-0460	Caplug - End Cap	1	
69	<b>R323-2</b>	01-178-0604, 323-2	Bolt - Hex HD 3/8-16 x 1	1	
70	<b>R10-5080</b>	10-5080, 10-5080-01	End - Cap Reel Brg Housing	1	
71	<b>R10-5120</b>	10-5120	Housing - Bearing Reel	2	

*Detail Description: Includes R253-96 & R254-72:*

All original equipment manufacturers names and part numbers are used for identification purposes only, and we are in no way implying that our products are original equipment parts. Prices subject to change without notice.



## Replaces Toro Greensmaster 3 Parts

*Brush Reel Unit - R&R Special*

*Brush Reel & Bedknife*



Item No	R&R Part No.	OEM Part No.	Description	Qty Req	Order Quantity
72	R302-40	302-13, 302-40	Fitting - Grease	1	
73	R3233-26	3233-26	Bolt - Carriage 1/2-13 x 1-1/4	2	
74	R3253-7	01-166-0030, 01-166-0080, 01-166-0290, 01-166-0810, 23-13-GD, 3253-7, 48-9380	Washer - Lock 1/2	2	
75	R443118	01-188-0813, 22-15-AJD, 3217-9	Nut - 1/2-13 Zinc	2	
76	R104-3399	104-3399	Housing Assy - Bearing Reel	2	
77	R3290-125	3290-125	Screw - Set 1/4-20 x 5/16	2	
88	R254-72	01-103-0050, 01-103-0120, 01-103-0140, 1-543508, 254-71, 254-72, 40439, 62-3340, 99-4511	Cup - Bearing	2	
89	R254-94	1-543509, 254-94, 32-8090, 32-8240, 32-9640, 40440, 62-3330	Tapered Bearing Cone	2	
90	R94-2958	94-2958	Stud - Alloy Ball Joint	2	

All original equipment manufacturers names and part numbers are used for identification purposes only, and we are in no way implying that our products are original equipment parts. Prices subject to change without notice.





## Replaces Toro Greensmaster 3 Parts

Brush Reel Unit - R&R Special

Brush Reel & Bedknife



Item No	R&R Part No.	OEM Part No.	Description	Qty Req	Order Quantity
91	R3254-6	01-166-0010, 01-166-0280, 01-166-0610, 3253-5, 3254-18, 3254-6, 3290-223, 48-9370	Washer - Lock 3/8	2	
92	R256-116	256-116	Bushing - Flanged	4	
93	R21-6540	21-6540	Roller - Grooved Repairable Steel	1	
<i>Detail Description: Constructed with greasable "water-pump" style bearings, this roller can be repaired by unscrewing the ends and replacing the series of washers and spacers.:</i>					
94	R52-3180	21-6410, 52-3180	Bearing - Front Roller	2	
95	R21-8450	21-8450	Roller - Smooth Tubular Steel	1	
<i>Detail Description: Constructed with greasable "water-pump" style bearings. :</i>					
96	R21-8430	21-8430	Bearing - Roller	2	

All original equipment manufacturers names and part numbers are used for identification purposes only, and we are in no way implying that our products are original equipment parts. Prices subject to change without notice.