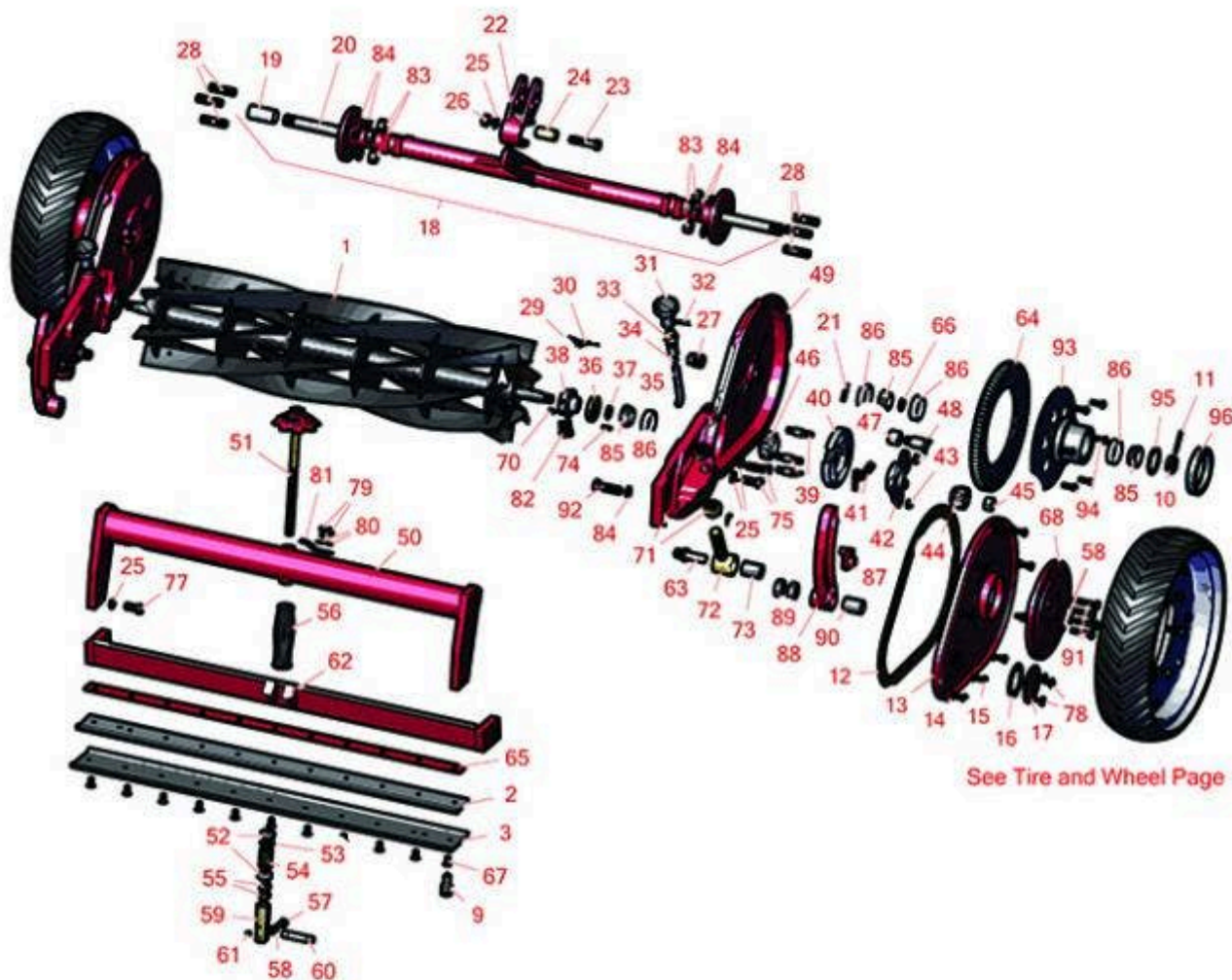




# Replaces Toro Spartan Fairway Parts

Cutting Unit  
Reel & Bedknife



All original equipment manufacturers names and part numbers are used for identification purposes only, and we are in no way implying that our products are original equipment parts. Prices subject to change without notice.



# Replaces Toro Spartan Fairway Parts

Cutting Unit  
Reel & Bedknife



Item No	R&R Part No.	OEM Part No.	Description	Qty Req	Order Quantity
---------	--------------	--------------	-------------	---------	----------------

## R&R Reels, Lifetime Guaranteed

1	R26-2500	23-3150, 26-2500, 5-1443, Apr-09, Feb-19, Mar-90, May-09, May-39, Nov-50	Reel - 5 Blade	1	
---	----------	--	----------------	---	--

*Detail Description: R&R Reel blades are expertly crafted from premium high carbon-boron alloy steel, heat-treated to perfectly complement both R&R and OEM bedknives. Each reel undergoes precision cylindrical grinding on bearing surfaces, followed by relief grinding for optimal performance. Advanced computer balancing ensures extended reel and bearing life. Backed by our lifetime guarantee against defects in materials and craftsmanship under normal use, R&R Reels deliver unmatched durability and cutting precision you can trust.:*

1	R26-2600	26-2600	Reel - 6 Blade	1	
---	----------	---------	----------------	---	--

*Detail Description: R&R Reel blades are expertly crafted from premium high carbon-boron alloy steel, heat-treated to perfectly complement both R&R and OEM bedknives. Each reel undergoes precision cylindrical grinding on bearing surfaces, followed by relief grinding for optimal performance. Advanced computer balancing ensures extended reel and bearing life. Backed by our lifetime guarantee against defects in materials and craftsmanship under normal use, R&R Reels deliver unmatched durability and cutting precision you can trust.:*

1	R26-2700	26-2700, Apr-29, Feb-89, Mar-80, May-09, May-29, Nov-60	Reel - 7 Blade	1	
---	----------	---	----------------	---	--

*Detail Description: R&R Reel blades are expertly crafted from premium high carbon-boron alloy steel, heat-treated to perfectly complement both R&R and OEM bedknives. Each reel undergoes precision cylindrical grinding on bearing surfaces, followed by relief grinding for optimal performance. Advanced computer balancing ensures extended reel and bearing life. Backed by our lifetime guarantee against defects in materials and craftsmanship under normal use, R&R Reels deliver unmatched durability and cutting precision you can trust.:*

## R&R Bedknives, Lifetime Guaranteed

2	R150450		Bedknife - Single Lip	1	
---	---------	--	-----------------------	---	--

All original equipment manufacturers names and part numbers are used for identification purposes only, and we are in no way implying that our products are original equipment parts. Prices subject to change without notice.



# Replaces Toro Spartan Fairway Parts

Cutting Unit  
Reel & Bedknife



Item No	R&R Part No.	OEM Part No.	Description	Qty Req	Order Quantity
---------	--------------	--------------	-------------	---------	----------------

*Detail Description: R&R Bedknives are manufactured from high carbon-boron alloy steel and then hardened to RC46-49 to match the temper of our reel blades and original equipment reels. Bedknives are surface ground on the top and front edge and straightened three times before being packaged with oil for rust prevention. All R&R Bedknives now have an increased front edge grind for added life. All R&R Bedknives are guaranteed against defects in material and workmanship under normal use for the life of the part.:*

3	<b>R150451</b>	12-9650, 3-4782, Mar-07	Bedknife - Double Lip	1	
---	----------------	-------------------------------	-----------------------	---	--

*Detail Description: R&R Bedknives are manufactured from high carbon-boron alloy steel and then hardened to RC46-49 to match the temper of our reel blades and original equipment reels. Bedknives are surface ground on the top and front edge and straightened three times before being packaged with oil for rust prevention. All R&R Bedknives now have an increased front edge grind for added life. All R&R Bedknives are guaranteed against defects in material and workmanship under normal use for the life of the part.:*

## Overhaul Kits

4	<b>R150490</b>		Anti-Seize Pivot Kit	1	
---	----------------	--	----------------------	---	--

*Detail Description: Includes 2 ea: R19-9820S Pivot, R47-4430 Bushing:*

5	<b>R255-100</b>	255-100	Overhaul Kit - Cutting Unit	1	
---	-----------------	---------	-----------------------------	---	--

*Detail Description: Includes 20 ea.: R3252-4 Screws, R3255-7 Washers; 8 ea.: R254-78 Bearings, R254-79 Bearing Cups; 2 ea.: R237-38 O-rings, R237-54 O-rings, R253-101 Seals, R253-117 Seals, R253-122 seals, R3-5002 Gaskets, R5-3820 Seals; 1 ea: R237-58 O-ring & R5-1458 Gasket:*

6	<b>R13-3619</b>	13-3619	Overhaul Kit - Cutting Unit	1	
---	-----------------	---------	-----------------------------	---	--

*Detail Description: Includes 11 ea.: R150476 Screws; 6 ea.: R254-78 Bearings, R254-79 Bearing Cups; 2 ea.: R19-9750 Bushings, R237-21 O-rings, R237-38 O-rings, R237-54 O-rings, R253-101 Seals, R253-117 Seals, R253-122 Seals, R3-5002 Cork Gaskets, R5-3820 Seals; 1ea.:R237-58 O-ring, & R5-1458 Gasket:*

7	<b>R11-5825</b>	11-5825	Kit - Micro Adjusting	1	
---	-----------------	---------	-----------------------	---	--

*Detail Description: Includes 2 ea: R3220-12 Nut, R8-2570 Bearing; 1 ea: R11-5820 Handle, R12-0430 Shield, R12-1800 Adjustent, R20-0480 Pivot, R302-5 Fitting, R3210-4 Capscrew, R3253-4 Washer, R5-4373 Spring, R8-2490 Washer:*

## Service Tools

9	<b>R51-0880</b>	51-0880	Bedknife Screw Driver Tool	0	
---	-----------------	---------	----------------------------	---	--

All original equipment manufacturers names and part numbers are used for identification purposes only, and we are in no way implying that our products are original equipment parts. Prices subject to change without notice.



# Replaces Toro Spartan Fairway Parts

Cutting Unit  
Reel & Bedknife



Item No	R&R Part No.	OEM Part No.	Description	Qty Req	Order Quantity
---------	--------------	--------------	-------------	---------	----------------

*Detail Description: Easily install and remove bed knife screws with the help of a ratchet with 3/8" drive. Tool manufactured with hardened alloy steel.:*

## Other Parts Available

10	<b>R5-1462</b>	5-1462	Nut - Castle	2
11	<b>R3272-16</b>	3272-16	Pin - Cotter 5/32 x 1-1/4	2
12	<b>R3-5002</b>	106-5409, 3-5002, Mar-97	Gasket - Cork Fits Side Case	2
13	<b>R47-4060</b>	3-5430, 3-5440, 47-4060, 47-4060-01	Cover - Gear Housing	2
14	<b>R3255-7</b>	3255-7, 76-5310	Washer - Lock 1/4 Ext Star Z	20
15	<b>R3252-4</b>	32140-3, 32140-94, 3252-4	Screw - Cover	20
15	<b>R32140-94</b>	32140-94	Bolt - 1/4-20 x 1/2 Hx HD Sems	0
16	<b>R5-1458</b>	106-5408, 5-1458	Gasket - Insp Plate	2
17	<b>R5-1460</b>	5-1460	Cover - Inspection Plate	2
18	<b>R5-3889</b>	5-3889, Mar-89, May-72	Axle - Assy	1
19	<b>R5-3137</b>	5-3137	Bushing - Axle	2
20	<b>R5-2673</b>	5-2673	Shaft - Axle	1
21	<b>R32121-12</b>	01-153-0150, 32121-12	Pin - Roll	2
22	<b>R5-1090</b>	01-651-0060, 5-1090	Clamp	2

All original equipment manufacturers names and part numbers are used for identification purposes only, and we are in no way implying that our products are original equipment parts. Prices subject to change without notice.



# Replaces Toro Spartan Fairway Parts

Cutting Unit  
Reel & Bedknife



Item No	R&R Part No.	OEM Part No.	Description	Qty Req	Order Quantity
23	<b>R324-10</b>	01-178-0720, 324-10	Bolt - Clamp	2	
24	<b>R5-1091</b>	5-1091	Spacer - Clamp	2	
25	<b>R3253-6</b>	01-166-0710, 23-12-GD, 3253-6, 59-7590	Washer - Lock 7/16 Zinc	2	
26	<b>R3217-8</b>	01-188-0714, 22-14-AJD, 3217-8	Nut - 7/16-20 Zinc	2	
27	<b>R281-3</b>	281-3, 30-1090, 58-7250	Plug - Pipe 1/2	2	
28	<b>R3-7446</b>	3-7446	Stud - Spacer Tube	6	
29	<b>R302-14</b>	302-14	Fitting - Relief	1	
30	<b>R5-4641</b>	5-4641	Vent - Air	1	
31	<b>R5-1464</b>	5-1464, 5-1464-03	Handle - Throwout	2	
32	<b>R3283-1</b>	3283-1	Pin - Drive Lock	2	
33	<b>R3-3892</b>	3-3892, Nov-30	Sleeve - Throwout	2	
34	<b>R237-21</b>	237-21, 327-21	O-Ring	2	
35	<b>R3-3891</b>	3-3891	Finger - Throwout LH	1	
35	<b>R3-3904</b>	3-3904	Finger - Throwout RH	1	
36	<b>R5-3820</b>	253-102, 253-16, 5-3820	Seal - Oil Reel	2	
37	<b>R237-58</b>	237-58	O-Ring	1	

All original equipment manufacturers names and part numbers are used for identification purposes only, and we are in no way implying that our products are original equipment parts. Prices subject to change without notice.



# Replaces Toro Spartan Fairway Parts

Cutting Unit  
Reel & Bedknife



Item No	R&R Part No.	OEM Part No.	Description	Qty Req	Order Quantity
38	<b>R2-4219</b>	2-4219	Nut - Adjustment Reel Brg	1	
39	<b>R3-7445</b>	3-7445	Stud	6	
40	<b>R3-4160</b>	3-4160	Ring - Carrier LH	1	
40	<b>R3-4170</b>	3-4170	Ring - Carrier RH	1	
41	<b>R3-3251</b>	3-3251	Spring	4	
42	<b>R3-3996</b>	3-3996	Retainer - Ratchet Ring	1	
42	<b>R3-3997</b>	3-3997	Retainer - Ratchet Ring	1	
43	<b>R3296-6</b>	01-192-0280, 32118-2, 32127-14, 32127-15, 32146-12, 32146-6, 3296-32, 3296-6	Locknut - 3/8-24 ESNA	6	
44	<b>R5-1463</b>	5-1463, 5-1483	Gear - Pinion	2	
45	<b>R3-8386</b>	3-8386	Nut - Lefthand Thread	2	
46	<b>R12-1190</b>	12-1190	Gear - Ratchet	2	
47	<b>R252-6</b>	252-6	Bearing - Pinion Gear	2	
48	<b>R3-9116</b>	3-9116	Stud - Ratchet Gear RH Thrd	1	
48	<b>R3-9117</b>	3-9117	Stud - Ratchet Gear LH Thrd	1	
49	<b>R6-0859</b>	6-0749, 6-0859	Case - Gear LH	1	
49	<b>R6-0869</b>	6-0739, 6-0869	Case - Gear RH	1	
50	<b>R8-3970</b>	8-3970	Bar - Rear Cross	1	
51	<b>R11-5820</b>	11-5820	Handle - Adjusting	1	

All original equipment manufacturers names and part numbers are used for identification purposes only, and we are in no way implying that our products are original equipment parts. Prices subject to change without notice.



# Replaces Toro Spartan Fairway Parts

Cutting Unit  
Reel & Bedknife



Item No	R&R Part No.	OEM Part No.	Description	Qty Req	Order Quantity
52	<b>R8-2570</b>	8-2570	Bearing - Thrust	2	
53	<b>R8-2490</b>	8-2490	Washer	1	
54	<b>R5-4373</b>	5-4373	Spring	1	
55	<b>R3220-12</b>	3220-12	Nut - 1/2-20 LH Jam Hex	2	
56	<b>R12-0430</b>	12-0430, Aug-00	Shield	1	
57	<b>R3210-4</b>	3210-4	Capscrew - Gr 5	1	
58	<b>R3253-4</b>	01-166-0110, 01-166-0510, 23-10-GD, 24-7170, 30-8520, 3253-4, 48-9350, 48-9360, 48-9570, 68-9420, 99-7577	Washer - Lock 5/16 Zinc	5	
59	<b>R12-1800</b>	12-1800, Nov-40	Adjustment	1	
60	<b>R20-0480</b>	20-0480, Nov-30	Pivot - Rod	1	
61	<b>R302-5</b>	21-6010, 302-11, 302-37, 302-47, 302-5, 302-57, 302-58, 302-6, 31-0300, 32-9660, 60-0800, 62-3880, 92-4181	Fitting - Grease	3	
62	<b>R11-5770</b>	11-5770	Backing Bar - Fwy	1	

All original equipment manufacturers names and part numbers are used for identification purposes only, and we are in no way implying that our products are original equipment parts. Prices subject to change without notice.



# Replaces Toro Spartan Fairway Parts

Cutting Unit  
Reel & Bedknife



Item No	R&R Part No.	OEM Part No.	Description	Qty Req	Order Quantity
63	<b>R19-9820</b>	19-9820	Pivot - Bed Bar	2	
63	<b>R19-9820S</b>		Pivot - Stainless Bed Bar	2	
64	<b>R5-1457</b>	5-1457	Gear - Main	2	
65	<b>R5-6040</b>	5-6040	Spacer - Bedknife	1	
66	<b>R237-54</b>	237-35, 237-46, 237-54, 253-35, 353-308	O-Ring - Small	2	
67	<b>R150475</b>	3-6462	Screw - Bedknife Stainless 5/16-18 x 5/8	11	
<i>Detail Description: Pre-Packaged in bags of 50:</i>					
67	<b>R150476</b>	3-3816, 3-6462, 57-4910	Screw - Bedknife 5/16-18 x 5/8	11	
68	<b>R5-1468</b>	5-1468	Hub - Wheel	2	
70	<b>R3257-3</b>	3257-3	Key - Woodruff	2	
71	<b>R3000313</b>	217-104	Nut - Roller Adjusting	4	
72	<b>R19-9870</b>	19-9870	Bearing - Rod End w/Bushing	2	
73	<b>R19-9750</b>	19-9750, 68-7530	Bushing	2	
74	<b>R32121-2</b>	29-58-C, 32121-2, 6650	Pin - Roll 3/16 x 5/8	2	
75	<b>R324-6</b>	01-150-1690, 01-178-0712, 20-68-AGD, 3225-3, 324-6	Bolt - Hex HD 7/16-14 x 1-1/2	4	

All original equipment manufacturers names and part numbers are used for identification purposes only, and we are in no way implying that our products are original equipment parts. Prices subject to change without notice.





# Replaces Toro Spartan Fairway Parts

Cutting Unit  
Reel & Bedknife



Item No	R&R Part No.	OEM Part No.	Description	Qty Req	Order Quantity
77	R324-5	01-178-0710, 20-64-AGD, 20-67-AGD, 30-8890, 3225-2, 324-5	Bolt - Hex HD	2	
78	R11-8960	11-8960	Screw - w/Washer/Neoprene	6	
79	R329-2	329-2	Bolt - Hex HD 1/4-28 x 1/2	2	
80	R3253-3	01-166-0070, 01-166-0410, 23-9-GD, 24-7150, 3253-3, 3256-1, 352-167	Washer - Lock 1/4	2	
81	R8-1750	8-1750	Arm - Spring	1	
82	R3273-14	3273-13, 3273-14	Screw - 5/16-24 x 1 Skt HD Cap Zinc	2	
83	R3219-5	01-188-0820, 22-15-BJD, 22-15-BJKD, 3219-5	Nut - 1/2-20	6	
84	R3253-7	01-166-0030, 01-166-0080, 01-166-0290, 01-166-0810, 23-13-GD, 3253-7, 48-9380	Washer - Lock 1/2	8	
85	R254-9	254-9	Tapered Bearing Cone	2	
85	R254-78	01-102-0060, 01-102-0130, 1-633585, 254-78, 32-7790, 32-9580, 93-4813	Tapered Bearing Cone	6	

All original equipment manufacturers names and part numbers are used for identification purposes only, and we are in no way implying that our products are original equipment parts. Prices subject to change without notice.



# Replaces Toro Spartan Fairway Parts

Cutting Unit  
Reel & Bedknife



Item No	R&R Part No.	OEM Part No.	Description	Qty Req	Order Quantity
86	<b>R254-11</b>	254-11	Tapered Bearing Cup	2	
86	<b>R254-79</b>	01-103-0060, 01-103-0130, 1-633584, 252-106, 254-79, 32-7800, 32-9590	Cup - Bearing	6	
<i>Detail Description: Use R254-79M installation mandrel to properly install race.:</i>					
87	<b>R6-1120</b>	6-1120	Nut - Adjusting RH	1	
87	<b>R6-1130</b>	6-1130	Nut - Adjusting LH	1	
88	<b>R2-2149</b>	2-2149	Bracket - Roller LH w/Bush	1	
88	<b>R2-2139</b>	2-2139	Bracket - Roller RH w/Bush	1	
<i>Detail Description: Fits Spartan Only:</i>					
89	<b>R3220-7</b>	01-191-1216, 3220-7, Mar-03	Nut - 3/4-16 Jam Zinc	4	
90	<b>R3-4010</b>	3-4010	Bushing	2	
91	<b>R5-1470</b>	5-1470	Capscrew - 5/16-18 x 1-1/2	8	
92	<b>R325-7</b>	01-150-0380, 01-178-0814, 3226-3, 325-7, 48-9490	Bolt - 1/2-13 x 1 3/4 Hex HD Gr 5	2	
93	<b>R3-4001</b>	3-4001, 95-1828	Hub - Ring Gear with Rivets	2	
94	<b>R3262-3</b>	3262-3	Rivet - Ring Gear Hub	12	
95	<b>R237-38</b>	237-38, 7-1393	O-Ring - Large	2	

All original equipment manufacturers names and part numbers are used for identification purposes only, and we are in no way implying that our products are original equipment parts. Prices subject to change without notice.



# Replaces Toro Spartan Fairway Parts

Cutting Unit  
Reel & Bedknife



Item No	R&R Part No.	OEM Part No.	Description	Qty Req	Order Quantity
96	R253-101	253-101, 253-13, 253-25, 253-4, 47-4500, 84-8200	Seal - Oil Cover	2	

All original equipment manufacturers names and part numbers are used for identification purposes only, and we are in no way implying that our products are original equipment parts. Prices subject to change without notice.