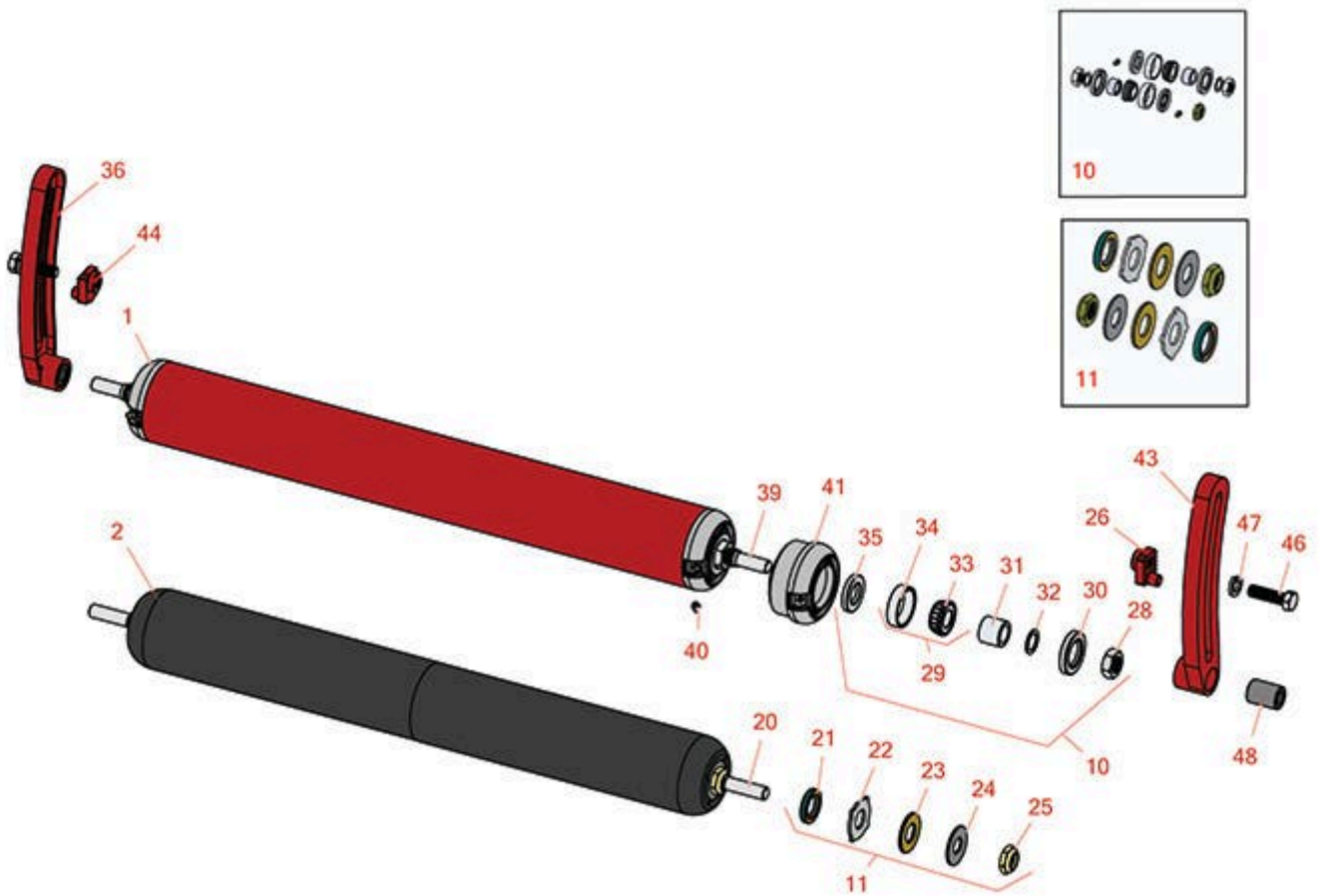




# Replaces Toro Spartan Fairway Parts

Cutting Unit  
Rollers



All original equipment manufacturers names and part numbers are used for identification purposes only, and we are in no way implying that our products are original equipment parts. Prices subject to change without notice.



# Replaces Toro Spartan Fairway Parts

Cutting Unit  
Rollers



Item No	R&R Part No.	OEM Part No.	Description	Qty Req	Order Quantity
---------	--------------	--------------	-------------	---------	----------------

## R&R Rollers

1	<b>R8-3990</b>	2-0949, 3-0321, 5-3939, 8-3990, Apr-49, Feb-39, May-26	Roller - Smooth Heavy Duty Tubular Steel	0	
---	----------------	--	---	---	--

*Tech Note: Constructed with a through shaft, this heavy duty roller uses tapered bearings for extended life.:*

2	<b>R1503850</b>		Roller - Smooth UHMW Polyethylene	0	
---	-----------------	--	--------------------------------------	---	--

*Tech Note: Machined from solid UHMW, this low maintenance roller uses a 1" solid stainless steel shaft and requires no grease. UHMW material prevents build-up of debris.:*

## Overhaul Kits

10	<b>R100165</b>		Overhaul Kit - Roller	0	
----	----------------	--	-----------------------	---	--

*Tech Note: Includes 2 ea.: R253-117 Seals, R253-122 Seals, R254-78 Bearings, R254-79 Bearing Cups, R302-5 Grease Fittings, R3220-7 Nuts, R47-7510 Washers, R5-4523 Sleeves; 1 ea.: R3296-15 Locknut:*

11	<b>R101399</b>		Overhaul Kit - UHMW 2 Pc Roller	1	
----	----------------	--	---------------------------------	---	--

*Tech Note: Fits all R&R 2-1/2" - 3-1/2" Dia. Black UHMW Plastic Rollers that do not use ball bearings.. Includes 2 ea.: R1503230 Star Washers, R1503470 Seals, R150333 Thrust Washers, R3296-15 Locknuts, R1503471 Bronze Thrust Washers:*

## Other Parts Available

20	<b>R1503860</b>		Shaft - 1 SS Roller	1	
----	-----------------	--	---------------------	---	--

21	<b>R1503470</b>		Seal - Inner Wiper	2	
----	-----------------	--	--------------------	---	--

22	<b>R1503230</b>		Washer - Thrust Outer Keyed	2	
----	-----------------	--	-----------------------------	---	--

23	<b>R1503471</b>		Washer - Thrust SAE660 Bronze	2	
----	-----------------	--	-------------------------------	---	--

24	<b>R150333</b>		Washer - Flat Keyed Outer SS	2	
----	----------------	--	------------------------------	---	--

All original equipment manufacturers names and part numbers are used for identification purposes only, and we are in no way implying that our products are original equipment parts. Prices subject to change without notice.



# Replaces Toro Spartan Fairway Parts

Cutting Unit  
Rollers



Item No	R&R Part No.	OEM Part No.	Description	Qty Req	Order Quantity
25	<b>R3296-15</b>	116-7306, 32118-5, 32127-23, 32127-47, 3296-15	Locknut - 3/4-16 Nylon Jam	2	
26	<b>R6-1130</b>	6-1130	Nut - Adjusting LH	1	
26	<b>R47-4390</b>	47-4390	Nut - Roller Adj LH	1	
28	<b>R3220-7</b>	01-191-1216, 3220-7, Mar-03	Nut - 3/4-16 Jam Zinc	2	
29	<b>R500534</b>	1-633585	Bearing - with Cup	2	
30	<b>R253-117</b>	253-117, 253-165	Seal - Outer Triple Lip	2	
31	<b>R5-4523</b>	5-4523	Sleeve - Roller	2	
31	<b>R5-4523S</b>		Sleeve - Stainless Roller	2	
32	<b>R47-7510</b>	47-7510	Washer - Nylon	2	
33	<b>R254-78</b>	01-102-0060, 01-102-0130, 1-633585, 254-78, 32-7790, 32-9580, 93-4813	Tapered Bearing Cone	2	
34	<b>R254-79</b>	01-103-0060, 01-103-0130, 1-633584, 252-106, 254-79, 32-7800, 32-9590	Cup - Bearing	2	
<i>Tech Note: Use R254-79M installation mandrel to properly install race.:</i>					
35	<b>R253-122</b>	253-122, 30-0640	Seal	2	

All original equipment manufacturers names and part numbers are used for identification purposes only, and we are in no way implying that our products are original equipment parts. Prices subject to change without notice.



# Replaces Toro Spartan Fairway Parts

Cutting Unit  
Rollers



Item No	R&R Part No.	OEM Part No.	Description	Qty Req	Order Quantity
36	<b>R11-5079</b>	11-5079	Bracket - Roller LH	1	
<i>Tech Note: Fits Reelmaster Only:</i>					
39	<b>R8-3980</b>	8-3980	Shaft - Roller -1969-ON	1	
40	<b>R302-5</b>	21-6010, 302-11, 302-37, 302-47, 302-5, 302-57, 302-58, 302-6, 31-0300, 32-9660, 60-0800, 62-3880, 92-4181	Fitting - Grease	2	
41	<b>R4-5659</b>	4-5659	Roller End	2	
43	<b>R11-5089</b>	11-5089	Bracket - Roller RH	1	
44	<b>R6-1120</b>	6-1120	Nut - Adjusting RH	1	
44	<b>R47-4380</b>	47-4380	Nut - Roller Adj RH	1	
46	<b>R325-7</b>	01-150-0380, 01-178-0814, 3226-3, 325-7, 48-9490	Bolt - 1/2-13 x 1 3/4 Hex HD Gr 5	2	
47	<b>R3253-7</b>	01-166-0030, 01-166-0080, 01-166-0290, 01-166-0810, 23-13-GD, 3253-7, 48-9380	Washer - Lock 1/2	2	
48	<b>R3-4010</b>	3-4010	Bushing	2	

All original equipment manufacturers names and part numbers are used for identification purposes only, and we are in no way implying that our products are original equipment parts. Prices subject to change without notice.