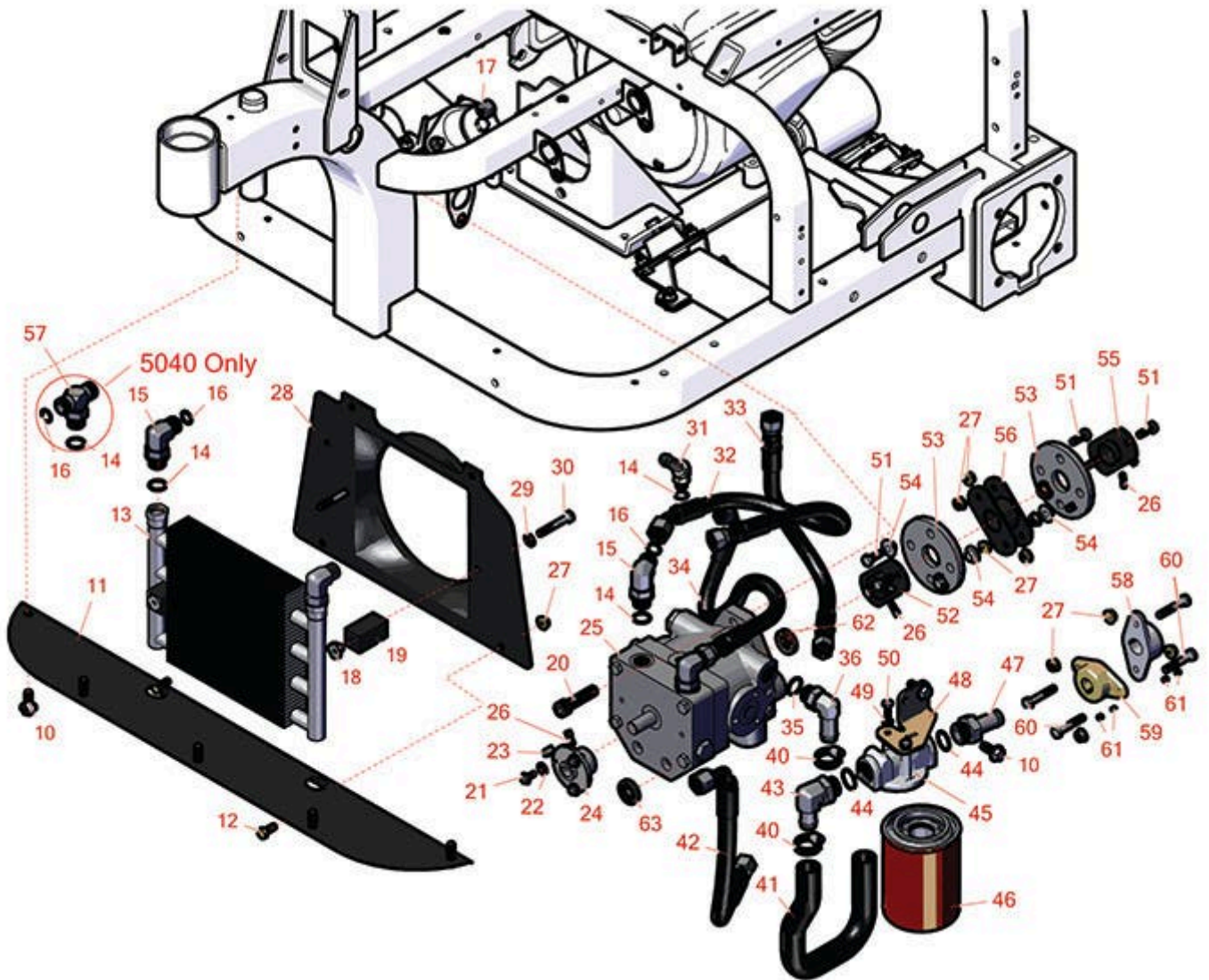




Replaces Toro Sand Pro 3040 Parts

Traction Unit

Hydraulic Pump and Coupling



All original equipment manufacturers names and part numbers are used for identification purposes only, and we are in no way implying that our products are original equipment parts. Prices subject to change without notice.



Replaces Toro Sand Pro 3040 Parts

Traction Unit

Hydraulic Pump and Coupling



Item No	R&R Part No.	OEM Part No.	Description	Qty Req	Order Quantity
10	R32144-14	32104-32, 32104-49, 32144-14	Bolt - Hex Washer 5/16-18 x 5/8	7	
11	R108-5480-03	108-5480-03	Panel-Cooler	1	
12	R322-3	01-150-1420, 01-178-0506, 20-24-AD, 20-24-AGD, 322-3, 48-9270, 513339, 908017P	Bolt - Hex HD 5/16-18 x 3/4	2	
13	R108-8457	108-8457	Cooler - Hyd Oil	1	
14	R237-79	237-79	O-Ring	5	
15	R340-98	340-98	Hydraulic Fitting	4	
16	R237-30	23-6320, 237-30	O-Ring - Seal	4	
17	RF5003	32127-29, 32131-5, 32132-5, 3296-23	Locknut - ESNA 1/2-13	2	
18	R85-9670	85-9670	T-Nut	2	
19	R85-9550	85-9550	Clamp - Rubber	2	
20	R3274-5	3274-5	Bolt - 1/2-13 x 2 Soc HD Cap	2	
21	R3274-52	3274-24, 3274-52, 52-5890	Screw - Soc HD Cap Scr	3	
22	R3256-22	24-9-BD, 3-1032, 3256-1, 3256-22, 93-0954, 93-0989	Washer - Flat 1/4 Yellow	3	

All original equipment manufacturers names and part numbers are used for identification purposes only, and we are in no way implying that our products are original equipment parts. Prices subject to change without notice.



Replaces Toro Sand Pro 3040 Parts

Traction Unit

Hydraulic Pump and Coupling



Item No	R&R Part No.	OEM Part No.	Description	Qty Req	Order Quantity
23	R1164	10-7070, 48-004-1931, 62-3380, 66-004-3221, 85-9020	Key - 1/4 x 1/4 x 1	1	
24	R108-5484	108-5484	Hub-Fan	1	
25	R114-0612	114-0612	Pump - Variable	1	
26	R3241-7	3241-7	Set Screw - 1/4-20 x 1/2 Sq HD Nyloc	6	
27	R104-8300	104-8300, 104-8300 , 119-4041	Locknut - 5/16-18 Flanged Y/Zinc	10	
27	R3296-47	3296-47	Locknut - 5/16-18 Jam Nyloc	10	
28	R108-5477	108-5477	Shroud-Fan	1	
29	R453009	01-166-0400, 24-10-BD, 24-9-AD, 32-9650, 3256-2, 3256-23, 3256-3, 3256-67, 3290-217, 3556-3, 4-2390, 7-0152	Washer - Flat 5/16 SAE	2	
30	R322-10	20-30-AD, 24-7180, 322-10, 322-10 , 3223-6, 513347	Bolt - Hex HD 5/16-18 x 2	2	
31	R354-126	354-126	Hydraulic Fitting - 45 Deg	1	
32	R108-8440	108-8440	Hydraulic Hose Assy	1	
33	R108-8426	108-8426	Hydraulic Hose Assy	1	

All original equipment manufacturers names and part numbers are used for identification purposes only, and we are in no way implying that our products are original equipment parts. Prices subject to change without notice.



Replaces Toro Sand Pro 3040 Parts

Traction Unit

Hydraulic Pump and Coupling



Item No	R&R Part No.	OEM Part No.	Description	Qty Req	Order Quantity
34	R110-1322	110-1322	Hydraulic Hose Assy	1	
35	R237-80	237-80, 327-80	O-Ring	1	
36	R95-0629	87-8170, 95-0629	Hydraulic Fitting - Push 90 Deg	1	
40	R2412-129	2412-129, 94-3188, 94-3189, 94-3193, 94-3203, 94-3204	Clamp - Worm 9/16-1 1/4	2	
41	R108-5481	108-5481	Hose-Suction	1	
42	R108-8428	108-8428	Hydraulic Hose Assy	1	
43	R353-987	353-987	Hydraulic Fitting - 90 Deg	1	
44	R237-81	237-81, 237.81, 327-81	O-Ring	2	
45	R68-8990	68-8990	Filter Head Assy	1	
46	R86-3010	23-9740, 239470, 28-1370, 281370, 353-387, 353387, 54-0110, 540110, 76-6490, 86-3010, 863010, Dec-70	Baldwin Hydraulic Oil Filter	1	
46	RRF10611	01-317-0240, 23-9740, 54-0110	SilverGuard Hydraulic Oil Filter	1	
47	R354-73	354-73	Fitting-Straight	1	

All original equipment manufacturers names and part numbers are used for identification purposes only, and we are in no way implying that our products are original equipment parts. Prices subject to change without notice.



Replaces Toro Sand Pro 3040 Parts

Traction Unit

Hydraulic Pump and Coupling



Item No	R&R Part No.	OEM Part No.	Description	Qty Req	Order Quantity
48	R108-5482	108-5482	Bracket-Filter - Oil	1	
49	R3253-3	01-166-0070, 01-166-0410, 23-9-GD, 24-7150, 3253-3, 3256-1, 352-167	Washer - Lock 1/4	2	
50	R321-4	01-150-1030, 01-178-0406, 20-3-AGD, 321-4, 3222-1	Bolt - Hex HD 1/4-20 x 3/4	2	
50	R3234-4	3234-4	Bolt - Hx Ser Was HD 1/4-20 x 3/4	2	
51	R322-4	322-4, 3290-115, 908018P	Bolt - Hex HD 5/16-18 x 7/8	8	
<i>Tech Note: Ser# 260000001-310000300:</i>					
52	R85-8700	85-8700	Hub-Pump	1	
<i>Tech Note: Ser# 260000001-310000300:</i>					
53	R44-2230	115-4523, 27-6560, 44-2230, 80-8650	Coupling - Rubber - Pump	2	
<i>Tech Note: Ser# 260000001-310000300:</i>					
54	R27-6600	27-6600	Spacer - Pump Coupling	8	
<i>Tech Note: Ser# 260000001-310000300:</i>					
55	R85-8730	85-8730	Hub-Engine	1	
<i>Tech Note: Ser# 260000001-310000300:</i>					
56	R85-8770	85-8770	Coupling	1	
<i>Tech Note: Ser# 260000001-310000300:</i>					

All original equipment manufacturers names and part numbers are used for identification purposes only, and we are in no way implying that our products are original equipment parts. Prices subject to change without notice.



Replaces Toro Sand Pro 3040 Parts

Traction Unit

Hydraulic Pump and Coupling



Item No	R&R Part No.	OEM Part No.	Description	Qty Req	Order Quantity
57	R340-157	340-157	Hydraulic Fitting - Tee	1	
58	R27-1960	110-5236, 27-1960	Hub - Engine	1	
<i>Tech Note: Ser# 310000001-999999999:</i>					
59	R49-9600	110-9695	Hub - Pump	1	
<i>Tech Note: Ser# 310000001-999999999:</i>					
60	R19H3130	322-9, 3223-5	Bolt - Hex HD 5/16-18 x 1-3/4	4	
<i>Tech Note: Ser# 310000001-999999999:</i>					
61	R150690	108-0989	Screw - Set 1/4-20 x 1/4	4	
62	R93-4133	28-3660, 67-8060, 93-4133	Seal	1	
63	R88-8230	88-8230	Seal- Oil	1	

All original equipment manufacturers names and part numbers are used for identification purposes only, and we are in no way implying that our products are original equipment parts. Prices subject to change without notice.