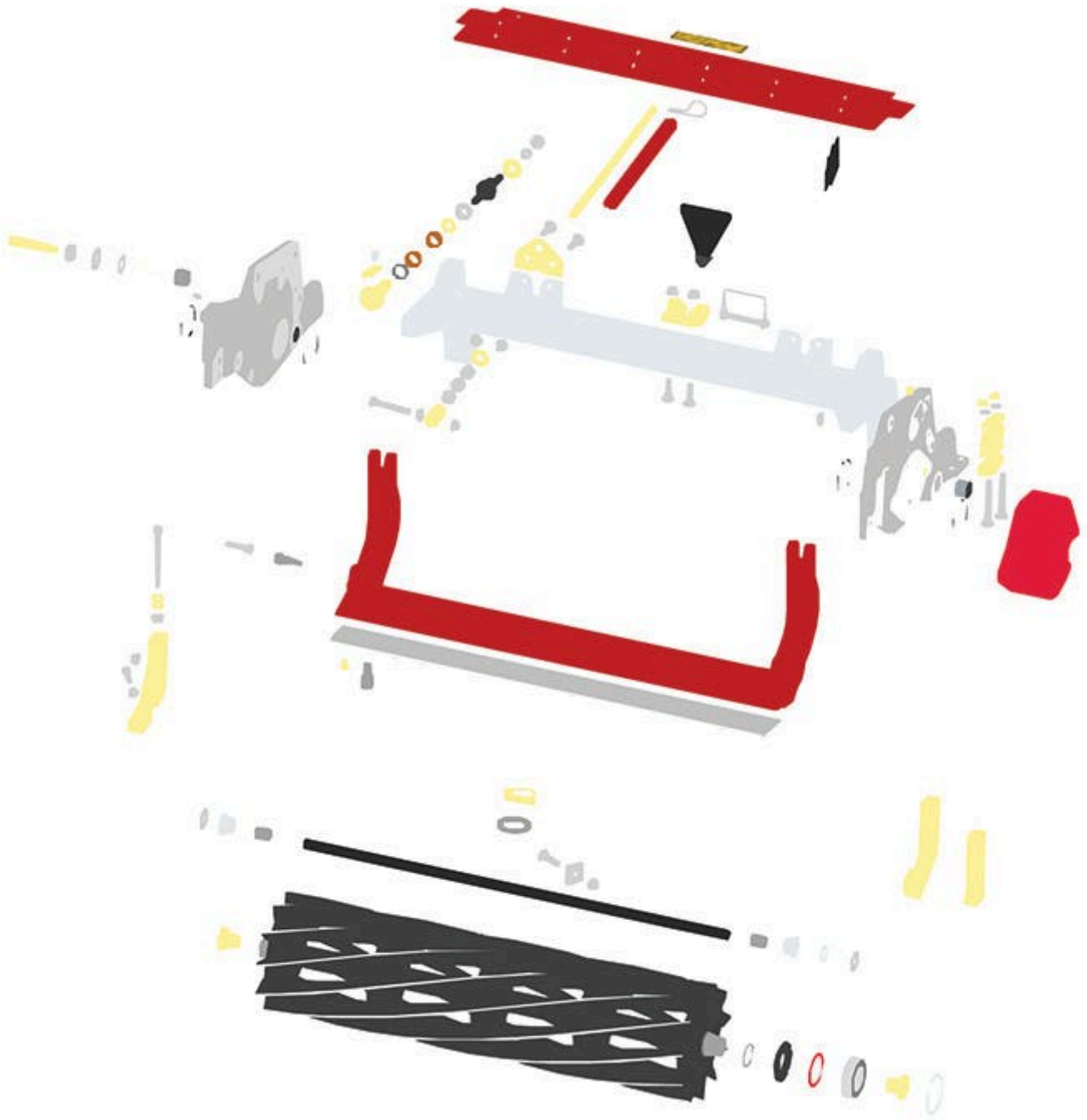




# Replaces Toro Reelmaster 7000-D Parts

27in DPA Cutting Unit - Models 03721 & 03722

Reel & Bedknife



All original equipment manufacturers names and part numbers are used for identification purposes only, and we are in no way implying that our products are original equipment parts. Prices subject to change without notice.



# Replaces Toro Reelmaster 7000-D Parts

27in DPA Cutting Unit - Models 03721 & 03722

Reel & Bedknife



Item No	R&R Part No.	OEM Part No.	Description	Qty Req	Order Quantity
---------	--------------	--------------	-------------	---------	----------------

### *R&R Reels Lifetime Guaranteed*

1	<b>R137-8469</b>	137-8469	Reel - 5 Blade Razor Series Radial Low Drag w/Bearings and Seals 27x7	0	
1	<b>R133-0184</b>	133-0184	Reel - 8 Blade Razor Series Radial 27x7	0	
1	<b>R137-8470</b>	137-8470	Reel - 8 Blade Razor Series Radial w/Bearings and Seals 27x7	0	
1	<b>R133-8278</b>	133-8278	Reel - 11 Blade Razor Series Radial 27x7	0	
1	<b>R137-8471</b>	137-8471	Reel - 11 Blade Razor Series Radial w/Bearings and Seals 27x7	0	
1	<b>R133-0193</b>	133-0193	Reel - 5 Blade Razor Series Radial 32x7	0	
1	<b>R137-8482</b>	137-8482	Reel - 5 Blade Razor Series Radial w/Bearings and Seals 32x7	0	
1	<b>R133-0195</b>	133-0195	Reel - 8 Blade Razor Series Radial Low Drag w/Bearings and Seals 32x7	0	
1	<b>R137-8483</b>	137-8483	Reel - 8 Blade Razor Series Radial w/Bearings and Seals 32x7	0	

### *R&R Bedknife, Lifetime Guaranteed*

2	<b>R114-9388</b>	114-9388	Bedknife - 27 in Unit - Standard	1	
2	<b>R114-9390</b>	114-9390	Bedknife - 27 in Unit - Heavy Duty	1	
2	<b>R114-9389</b>	114-9389	Bedknife - 32 in Unit - Standard	1	
2	<b>R114-9391</b>	114-9391	Bedknife - 32 in Unit - Heavy Duty	1	

### *R&R Razor Tool Steel Bedknives, Lifetime Guaranteed*

2	<b>R112-8910</b>	112-8910	Bedknife - Razor Tool Steel - 27 High Cut	1	
2	<b>R112-8956</b>	112-8956	Bedknife - Razor Tool Steel - 32 x 3/8 Fairway	1	

### *Overhaul Kits*

All original equipment manufacturers names and part numbers are used for identification purposes only, and we are in no way implying that our products are original equipment parts. Prices subject to change without notice.



# Replaces Toro Reelmaster 7000-D Parts

27in DPA Cutting Unit - Models 03721 & 03722

Reel & Bedknife



Item No	R&R Part No.	OEM Part No.	Description	Qty Req	Order Quantity
5	<b>R120-7230</b>	120-7230	Overhaul Kit - Fits DPA Units	0	
<i>Tech Note: Incl 2 ea.: R108-0015, R115-7039, R119-4155, R120-5116, R120-5118, R120-5120, R3296-33, R3296-48 &amp; 4 ea: R106-5344:</i>					
6	<b>R51-0880</b>	51-0880	Bedknife Screw Driver Tool	0	
<b>Other Parts Available</b>					
16	<b>R112-8935</b>	112-8935	Frame - Center - 27 in Unit	1	
17	<b>R112-8908-01</b>	112-8908-01	Bedbar - 27 in - Fits OEM Units Only	1	
18	<b>R170714</b>	302-34, 302-39, 62-3520	Fitting - Pressure Relief	2	
19	<b>R119-4155</b>	119-4155	Washer - Hardened	2	
20	<b>R106-5344</b>	106-5344	Bushing - Flanged and Keyed	4	
21	<b>R120-5116</b>	120-5116	Washer - Wave	2	
22	<b>R120-5118</b>	120-5118	Shaft - Adjuster	2	
<i>Tech Note: 2012 &amp; Newer:</i>					
23	<b>R99-2097</b>	99-2097	Detent - Bed Bar Adjuster	2	
24	<b>R3296-48</b>	119-4039, 32146-7, 3296-34, 3296-48	Locknut - 7/16-14 ESNA	2	
25	<b>R120-5120</b>	120-5120	Spring - Compression	2	
26	<b>R114-9396</b>	114-9396, 119-4067	Bolt - Hex HD 5/16-18 x 3/8	2	
27	<b>R110-1706</b>	110-1706	Deflector	6	
<i>Tech Note: 7 for 32 in Units:</i>					
28	<b>R108-4269-01</b>	108-4269-01	Weight	1	

All original equipment manufacturers names and part numbers are used for identification purposes only, and we are in no way implying that our products are original equipment parts. Prices subject to change without notice.



# Replaces Toro Reelmaster 7000-D Parts

27in DPA Cutting Unit - Models 03721 & 03722  
Reel & Bedknife



Item No	R&R Part No.	OEM Part No.	Description	Qty Req	Order Quantity
29	<b>R112-8942</b>	112-8942	Front Grass Shield Assy - 27 in Units	1	
30	<b>R115-7039</b>	115-7039	Screw - Adjuster - Bedbar	2	
<i>Tech Note: 2012 &amp; Newer:</i>					
31	<b>R3296-33</b>	3296-33	Locknut - 5/8-18 ESNA Jam	2	
<i>Tech Note: 2012 &amp; Newer:</i>					
32	<b>R3245-35</b>	3245-35	Screw - Set 1/4-28 x 1/4	2	
33	<b>R110-4069</b>	110-4069	Bracket	1	
34	<b>R3231-25</b>	01-173-0610, 30-9970, 3231-25, 3231-3, 900064P	Bolt - Carriage 3/8-16 x 1-1/4	4	
35	<b>R104-8301</b>	104-8301, 104-9301, 109-6658, 133-7570	Locknut - 3/8-16 Nylon Flanged	7	
36	<b>R87-7270-01</b>	87-7270, 87-7270-01	Washer - Flat 1/2	1	
37	<b>R99-8662</b>	99-8662	Tube - Spring	1	
38	<b>R104-3396</b>	104-3396	Bolt - Hex HD 3/8-16 x 2-1/4	1	
39	<b>R110-4058</b>	110-4058	Bracket - Chain	1	
40	<b>R92-2601</b>	92-2601	Snap Ring	2	
41	<b>R127-4284</b>	127-4284	Washer - Special	2	
42	<b>R115-3299</b>	115-3299	Seal- Flocked	2	
43	<b>R115-3296</b>	115-3296	Bearing	2	
44	<b>R112-6967</b>	112-6967	O-Ring	2	

All original equipment manufacturers names and part numbers are used for identification purposes only, and we are in no way implying that our products are original equipment parts. Prices subject to change without notice.



# Replaces Toro Reelmaster 7000-D Parts

27in DPA Cutting Unit - Models 03721 & 03722

Reel & Bedknife



Item No	R&R Part No.	OEM Part No.	Description	Qty Req	Order Quantity
45	<b>R302-5</b>	21-6010, 302-11, 302-37, 302-47, 302-5, 302-57, 302-58, 302-6, 31-0300, 32-9660, 60-0800, 62-3880, 92-4181	Fitting - Grease	2	
46	<b>R105-5700</b>	105-5700, 115-5258	Wave Washer - Bearing	1	
47	<b>R107-4026</b>	107-4026	Bolt - Hex Tap 3/8-16 x 3-3/4	2	
48	<b>R3231-4</b>	01-157-0440, 01-173-0612, 3231-4	Bolt - Carriage 3/8-16 x 1-1/2	2	
49	<b>R3289-17</b>	3289-17	Screw - 3/8-16 x 1 1/2 Fl Soc HD	2	
50	<b>R117-8177</b>	117-8177	O-Ring	2	
51	<b>R443818</b>	01-191-0813, 3218-18, 3218-5, 3248-18	Nut - 1/2-13 Hex Jam Zinc	2	
53	<b>R322-16</b>	322-16, Apr-00	Bolt - Hex HD 5/16-18 x 1-1/8	2	
54	<b>R92-2762</b>	92-2762	Pin - Snap	1	
55	<b>R108-0015</b>	108-0015	Washer - Flat	2	
56	<b>R56-9520</b>	56-9520	Bushing - Nyliner	2	
57	<b>R61-1950</b>	61-1950	Washer - Nylon - Bed Bar	2	
58	<b>R283-71</b>	283-71	Pin - Lynch Heavy Duty	1	

All original equipment manufacturers names and part numbers are used for identification purposes only, and we are in no way implying that our products are original equipment parts. Prices subject to change without notice.



# Replaces Toro Reelmaster 7000-D Parts

27in DPA Cutting Unit - Models 03721 & 03722

Reel & Bedknife



Item No	R&R Part No.	OEM Part No.	Description	Qty Req	Order Quantity
59	<b>R453017</b>	01-166-0050, 01-166-0240, 01-166-0800, 24-13-AD, 24-14-AD, 32-8110, 3256-26, 3256-6, 453017, 69-8980, 87-7270	Washer - Flat 1/2	2	
60	<b>R94-8946</b>	94-1427, 94-8946	Washer - Thrust	1	
61	<b>R453011</b>	01-166-0100, 01-166-0120, 01-166-0270, 01-166-0500, 01-166-0600, 01-166-0620, 132-4593, 2356-3, 237-12, 24-10-AD, 24-11-AD, 24-11-BD, 24-12-AD, 24-12-BD, 30-9310, 32-8190, 3256-24, 3256-3, 3256-36, 3256-4, 453011, 47-9950, 48-9220, 513458, 7-0052	Washer - Flat 3/8 SAE Y/Zinc	4	
62	<b>R127-7111</b>	127-7111	Insert-Threaded - 7 in Reel (LH)	1	
63	<b>R127-7109</b>	127-7109	Insert-Threaded - 7 in Reel (RH)	1	
64	<b>R120-0404</b>	120-0404	Bracket- High HOC - LH	1	

All original equipment manufacturers names and part numbers are used for identification purposes only, and we are in no way implying that our products are original equipment parts. Prices subject to change without notice.



# Replaces Toro Reelmaster 7000-D Parts

27in DPA Cutting Unit - Models 03721 & 03722

Reel & Bedknife



Item No	R&R Part No.	OEM Part No.	Description	Qty Req	Order Quantity
<i>Tech Note: Fits 2011 &amp; Newer:</i>					
65	<b>R120-0405</b>	120-0405	Bracket - High HOC - RH	1	
<i>Tech Note: Fits 2011 &amp; Newer:</i>					
66	<b>R117-3752</b>	117-3752	Tube- Support - 27 in Units	1	
67	<b>R125-2796</b>	125-2796	Bracket- Front HOC	2	
<i>Tech Note: Fits 2013 &amp; Newer:</i>					
68	<b>R137-5963</b>	137-5963, 137-5967	Side Plate Assy - 7 in LH Aluminum	1	
69	<b>R137-5967</b>	137-5967	Side Plate Assy - 7 in RH Aluminum	1	
70	<b>R119-1603</b>	119-1603	Spacer - Pivot	2	
71	<b>R119-4275</b>	119-4275	Spring - Compression	0	
72	<b>R130-8094</b>	130-8094	Washer	2	
73	<b>R106-9623</b>	106-9623	Bolt - Bedbar	2	
74	<b>R106-9618</b>	106-9618	Bushing - Rubber	2	
75	<b>R119-4151</b>	119-4151	Screw - Bedknife 5/16-18 x 17/32	10	
76	<b>R115-2007</b>	107-7437, 115-2007	Rod - Spring	1	
77	<b>R32128-43</b>	30-8990, 32128-43, 3290-357	Nut - Flanged Whiz - 3/8-16	7	
78	<b>R108-4279</b>	108-4279	Spacer - Frame	2	
79	<b>R93-2877</b>	93-2877	Bushing - Flanged	2	
80	<b>R67-9410</b>	67-9410	Washer - Clevis Pin	2	
81	<b>R107-2979</b>	107-2979	Bolt - Shoulder	6	

All original equipment manufacturers names and part numbers are used for identification purposes only, and we are in no way implying that our products are original equipment parts. Prices subject to change without notice.



## Replaces Toro Reelmaster 7000-D Parts

27in DPA Cutting Unit - Models 03721 & 03722

Reel & Bedknife



Item No	R&R Part No.	OEM Part No.	Description	Qty Req	Order Quantity
82	<b>R3230-26</b>	3230-26	Screw - Carriage 5/16-18 x 3	4	
82	<b>R3230-30</b>	3230-30	Bolt - Carriage 5/16x4 1/2	4	
83	<b>R106-3924</b>	106-3924	Bracket - Rear Roller	2	
84	<b>R104-8300</b>	104-8300, 104-8300 , 119-4041	Locknut - 5/16-18 Flanged Y/Zinc	4	
85	<b>R94-6936</b>	94-6936, 94-9236	Washer - Hardened - 5/16 SAE	4	
86	<b>R119-0626</b>	119-0626	Shim - Roller - 1/4 in - Slotted	12	
87	<b>R107-7400</b>	107-7400	Pin - Lynch	1	
88	<b>R93-6688</b>	93-6688	Decal - Warning	1	
89	<b>R110-4088-03</b>	110-4088-03, 119-8010-03	Kickstand	1	

All original equipment manufacturers names and part numbers are used for identification purposes only, and we are in no way implying that our products are original equipment parts. Prices subject to change without notice.