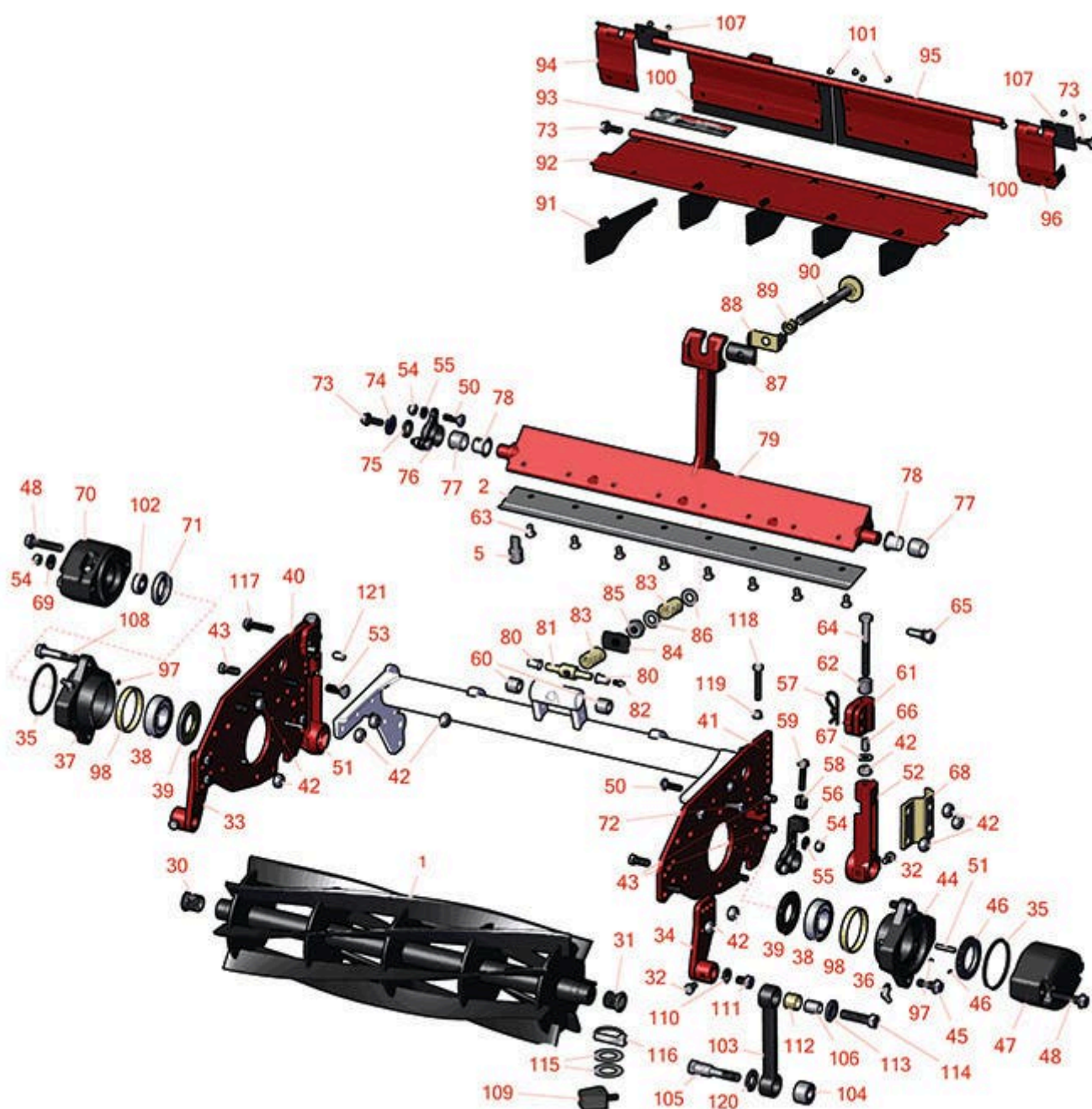




Replaces Toro Reelmaster 6500D Parts

Cutting Unit - Models 03853, 03854 & 03856

Reel & Bedknife



All original equipment manufacturers names and part numbers are used for identification purposes only, and we are in no way implying that our products are original equipment parts. Prices subject to change without notice.



Replaces Toro Reelmaster 6500D Parts

Cutting Unit - Models 03853, 03854 & 03856
Reel & Bedknife



| Item No | R&R Part No. | OEM Part No. | Description | Qty Req | Order Quantity |
|---------|--------------|--------------|-------------|---------|----------------|
|---------|--------------|--------------|-------------|---------|----------------|

R&R Reels, Lifetime Guaranteed

| | | | | | |
|---|-----------------|---------------------|----------------|---|--|
| 1 | R94-4337 | 93-7520, 94-4337 | Reel - 5 Blade | 1 | |
|---|-----------------|---------------------|----------------|---|--|

Detail Description: R&R Reel blades are expertly crafted from premium high carbon-boron alloy steel, heat-treated to perfectly complement both R&R and OEM bedknives. Each reel undergoes precision cylindrical grinding on bearing surfaces, followed by relief grinding for optimal performance. Advanced computer balancing ensures extended reel and bearing life. Backed by our lifetime guarantee against defects in materials and craftsmanship under normal use, R&R Reels deliver unmatched durability and cutting precision you can trust.:

| | | | | | |
|---|-----------------|---------|----------------|---|--|
| 1 | R95-2770 | 95-2770 | Reel - 7 Blade | 1 | |
|---|-----------------|---------|----------------|---|--|

Detail Description: R&R Reel blades are expertly crafted from premium high carbon-boron alloy steel, heat-treated to perfectly complement both R&R and OEM bedknives. Each reel undergoes precision cylindrical grinding on bearing surfaces, followed by relief grinding for optimal performance. Advanced computer balancing ensures extended reel and bearing life. Backed by our lifetime guarantee against defects in materials and craftsmanship under normal use, R&R Reels deliver unmatched durability and cutting precision you can trust.:

| | | | | | |
|---|-----------------|---------------------|-----------------|---|--|
| 1 | R94-4338 | 93-7521, 94-4338 | Reel - 11 Blade | 1 | |
|---|-----------------|---------------------|-----------------|---|--|

Detail Description: R&R Reel blades are expertly crafted from premium high carbon-boron alloy steel, heat-treated to perfectly complement both R&R and OEM bedknives. Each reel undergoes precision cylindrical grinding on bearing surfaces, followed by relief grinding for optimal performance. Advanced computer balancing ensures extended reel and bearing life. Backed by our lifetime guarantee against defects in materials and craftsmanship under normal use, R&R Reels deliver unmatched durability and cutting precision you can trust.:

R&R Bedknives, Lifetime Guaranteed

| | | | | | |
|---|-----------------|---------|-----------------|---|--|
| 2 | R93-9774 | 93-9774 | Bedknife - 5/16 | 1 | |
|---|-----------------|---------|-----------------|---|--|

Detail Description: R&R Bedknives are manufactured from high carbon-boron alloy steel and then hardened to RC46-49 to match the temper of our reel blades and original equipment reels. Bedknives are surface ground on the top and front edge and straightened three times before being packaged with oil for rust prevention. All R&R Bedknives now have an increased front edge grind for added life. All R&R Bedknives are guaranteed against defects in material and workmanship under normal use for the life of the part.:

| | | | | | |
|---|-----------------|---------|----------------|---|--|
| 2 | R94-8936 | 94-8936 | Bedknife - 1/2 | 1 | |
|---|-----------------|---------|----------------|---|--|

All original equipment manufacturers names and part numbers are used for identification purposes only, and we are in no way implying that our products are original equipment parts. Prices subject to change without notice.



Replaces Toro Reelmaster 6500D Parts

Cutting Unit - Models 03853, 03854 & 03856
Reel & Bedknife



| Item No | R&R Part No. | OEM Part No. | Description | Qty Req | Order Quantity |
|---------|--------------|--------------|-------------|---------|----------------|
|---------|--------------|--------------|-------------|---------|----------------|

Detail Description: R&R Bedknives are manufactured from high carbon-boron alloy steel and then hardened to RC46-49 to match the temper of our reel blades and original equipment reels. Bedknives are surface ground on the top and front edge and straightened three times before being packaged with oil for rust prevention. All R&R Bedknives now have an increased front edge grind for added life. All R&R Bedknives are guaranteed against defects in material and workmanship under normal use for the life of the part.:

Service Tools

| | | | | |
|---|-----------------|---------|----------------------------|---|
| 5 | R51-0880 | 51-0880 | Bedknife Screw Driver Tool | 0 |
|---|-----------------|---------|----------------------------|---|

Detail Description: Easily install and remove bed knife screws with the help of a ratchet with 3/8" drive. Tool manufactured with hardened alloy steel.:

Other Parts Available

| | | | | |
|----|--------------------|-----------------------------------------|-----------------------------|---|
| 30 | R94-2732 | 94-2732 | Insert - Threaded RH | 1 |
| 31 | R94-2733 | 94-2733 | Insert - Threaded LH | 1 |
| 32 | R93-9757 | 93-9757 | Bolt - Hex HD Nyloc M8 x 16 | 4 |
| 33 | R94-4332 | 94-4332, 94-4332-01 | Bracket - LH Front Roller | 1 |
| 34 | R94-4333 | 94-4333, 94-4333-01 | Bracket - RH Front Roller | 1 |
| 35 | R93-9783 | 93-9783 | O-Ring - Reel | 2 |
| 36 | R700414 | 302-11, 302-19, 302-4, 32-8170 | Zerk - Grease 1/4-28 45 Deg | 2 |
| 37 | R93-9794 | 93-9794 | Housing - Bearing RH | 1 |
| 38 | R93-2489 | 93-2489 | Bearing - Reel | 2 |
| 39 | R94-8908 | 93-2483, 94-8908 | Seal - Reel | 2 |
| 40 | R93-2981-01 | 93-2981, 93-2981-01 | Sideplate- RH | 1 |

All original equipment manufacturers names and part numbers are used for identification purposes only, and we are in no way implying that our products are original equipment parts. Prices subject to change without notice.



Replaces Toro Reelmaster 6500D Parts

Cutting Unit - Models 03853, 03854 & 03856
Reel & Bedknife



| Item No | R&R Part No. | OEM Part No. | Description | Qty Req | Order Quantity |
|---------|---------------------|--------------------------------------------------------------------|---------------------------------|---------|----------------|
| 41 | R93-2982-01 | 93-2982, 93-2982-01 | Sideplate - LH | 1 | |
| 42 | R33025-00 | 32025-00, 33025-00 | Locknut - 10mm x 1.5 Jam | 12 | |
| 43 | R33105-025 | 33105-025 | Bolt - Hex HD M10-1.5 x 25 | 8 | |
| 44 | R93-9795 | 93-9795 | Housing - Bearing LH | 1 | |
| 45 | R33105-030 | 33105-030 | Bolt - Hex Washer M10 | 4 | |
| 46 | R93-9786 | 105-6756, 93-9786, 95-2793, 99-5672 | Nut - Bearing Adj Incl R3245-42 | 1 | |
| 47 | R105-4011-03 | 105-4011, 105-4011-03, 94-4347, 94-4347-01, 94-4347-03 | Weight - End | 1 | |
| 48 | R93-7522 | 93-7522 | Bolt - Hx HD M10-1.5 x 90 | 4 | |
| 50 | R94-2738 | 94-2738 | Bolt - Carriage M8-1.25 x 25 | 4 | |
| 51 | R32121-69 | 119-4033, 120-8095, 32121-69 | Pin - Roll 1/4 x 1-1/4 | 4 | |
| 52 | R93-2904 | 93-2904, 93-2904-01 | Bracket - Rear Roller | 2 | |
| 53 | R33125-030 | 33125-030, 93-6452 | Bolt - Carriage M10 x 30 | 2 | |
| 54 | R33024-00 | 33024-00 | Locknut - 8mm x 1.25 | 5 | |
| 55 | R33094-00 | 33094-00, 93-5914 | Washer - Flat - 8mm Hardened | 4 | |
| 56 | R93-2512 | 93-2512 | Hub - Pivot LH Bed Bar | 1 | |

All original equipment manufacturers names and part numbers are used for identification purposes only, and we are in no way implying that our products are original equipment parts. Prices subject to change without notice.



Replaces Toro Reelmaster 6500D Parts

Cutting Unit - Models 03853, 03854 & 03856
Reel & Bedknife



| Item No | R&R Part No. | OEM Part No. | Description | Qty Req | Order Quantity |
|-----------------------------------------------|--------------------|-------------------------------|--------------------------------|---------|----------------|
| 56 | R100-3381 | 100-3381 | Hub - Pivot LH Bed Bar | 1 | |
| <i>Detail Description: Includes R93-7501:</i> | | | | | |
| 57 | R3290-467 | 3290-467 | Pin-Hair | 2 | |
| 58 | R93-2516 | 93-2516 | Spring - Pivot Hub Bed Bar | 1 | |
| 59 | R93-2571 | 93-2571 | Bolt - Hex Nyloc Washer Head | 1 | |
| 60 | R62-5510 | 52-2870, 62-5510 | Bushing | 2 | |
| 61 | R93-2902-01 | 93-2902-01 | Support - HOC - Rear | 2 | |
| 62 | R94-4344 | 94-4344 | Spacer | 2 | |
| 63 | R150476 | 3-3816, 3-6462, 57-4910 | Screw - Bedknife 5/16-18 x 5/8 | 8 | |
| 64 | R93-7500 | 93-7500 | Bolt - Hx HD M10-1.5 x 90 | 2 | |
| 65 | R93-2906 | 93-2906 | Pin - HOC | 2 | |
| 66 | R93-2921 | 93-2921 | Spring - Compression | 2 | |
| 67 | R93-7509 | 93-7509 | Washer - Special | 2 | |
| 68 | R61-0910 | 61-0910 | Bracket | 2 | |
| 69 | R310266 | 3256-23, 3256-3, 3556-3 | Washer - Flat 5/16 USS | 1 | |
| 70 | R93-3080-03 | 93-3080-03 | Housing, End Cap | 1 | |
| 71 | R253-117 | 253-117, 253-165 | Seal - Outer Triple Lip | 1 | |
| 72 | R33104-025 | 33104-025 | Bolt - Hex HD Flanged | 2 | |
| 73 | R33104-020 | 33104-020 | Bolt - Hex Washer HD | 4 | |

All original equipment manufacturers names and part numbers are used for identification purposes only, and we are in no way implying that our products are original equipment parts. Prices subject to change without notice.



Replaces Toro Reelmaster 6500D Parts

Cutting Unit - Models 03853, 03854 & 03856
Reel & Bedknife



| Item No | R&R Part No. | OEM Part No. | Description | Qty Req | Order Quantity |
|-----------------------------------------------|--------------------|------------------------------------|---------------------------|---------|----------------|
| 74 | R3256-35 | 3256-35 | Washer - Flat | 2 | |
| 75 | R93-7510 | 93-7510 | Ring - Quad RH Pivot Hub | 2 | |
| 76 | R93-2513 | 93-2513 | Hub - Pivot RH | 1 | |
| 76 | R100-3380 | 100-3380 | Hub - Pivot RH Bed Bar | 1 | |
| <i>Detail Description: Includes R93-7501:</i> | | | | | |
| 77 | R93-7501 | 93-7501 | Bushing | 2 | |
| 78 | R93-7502 | 93-7502 | Bushing - Flanged Nylon | 2 | |
| 79 | R99-8698 | 93-2854, 95-3458, 99-8698-01 | Bed Bar | 1 | |
| 80 | R52-2890 | 52-2890 | Bushing - Flanged | 2 | |
| 81 | R57-5260 | 107-7409, 57-5260 | Pivot - 1/2-20 - Bed Bar | 1 | |
| 82 | R302-18 | 302-18 | Zerk - Grease Press Style | 1 | |
| 83 | R95-0772 | 93-2915, 95-0772 | Spring - Bed Bar Adjuster | 2 | |
| 84 | R93-9780 | 93-9780 | Plate Washer - Spa | 1 | |
| 85 | R3296-62 | 3296-62 | Locknut - 1/2-20 LH Jam | 1 | |
| 86 | R29-8910-01 | 29-8910 | Washer - Flat 1/2 | 2 | |
| 87 | R93-2892 | 93-2892 | Pivot - Plastic - Bed Bar | 1 | |
| 88 | R95-8752 | 93-9767, 95-8752 | Arm - Spring | 1 | |
| 89 | R93-2959 | 93-2959 | Spacer - Bed Bar Assy | 1 | |

All original equipment manufacturers names and part numbers are used for identification purposes only, and we are in no way implying that our products are original equipment parts. Prices subject to change without notice.



Replaces Toro Reelmaster 6500D Parts

Cutting Unit - Models 03853, 03854 & 03856
Reel & Bedknife



| Item No | R&R Part No. | OEM Part No. | Description | Qty Req | Order Quantity |
|---------|--------------------|----------------------------------------------|-----------------------------|---------|----------------|
| 90 | R95-8877 | 106-7536, 93-2957, 95-2762, 95-8877 | Handle - Bed Bar Adjustment | 1 | |
| 91 | R100-2287 | 100-2287 | Deflector-Shield, | 5 | |
| 92 | R98-7978 | 93-9761, 94-8942, 98-7978 | Front Grass Shield | 1 | |
| 93 | R67-7960 | 27-2890, 62-5070, 67-7960 | Decal - Warning | 1 | |
| 93 | R93-6688 | 93-6688 | Decal - Warning | 1 | |
| 94 | R93-2998-01 | 93-2998, 93-2998-01 | Shield - RH | 1 | |
| 95 | R93-2996-01 | 93-2996, 93-2996-01 | Rear Grass Shield | 1 | |
| 96 | R93-3008-01 | 93-3008, 93-3008-01 | Shield - LH | 1 | |
| 97 | R3245-42 | 3245-42 | Screw - Set 8/32 x 1/4 | 1 | |
| 98 | R93-2922 | 93-2922, 93-9793 | Ring - Wear Bearing Housing | 2 | |
| 100 | R93-3011 | 93-3011 | Flap - Bottom | 2 | |
| 101 | R3295-48 | 3295-48 | Rivet - 3/16 x 3/8 Tub | 14 | |
| 101 | R700382 | 700382 | Rivet - Guard | 14 | |
| 102 | R93-2956 | 93-2956 | Bearing-Ball | 1 | |
| 103 | R93-3087 | 93-3087 | Bar - Link | 2 | |
| 104 | R93-9775 | 93-9775 | Spacer | 2 | |
| 105 | R93-9777 | 93-9777 | Bolt - Shoulder - Long | 2 | |

All original equipment manufacturers names and part numbers are used for identification purposes only, and we are in no way implying that our products are original equipment parts. Prices subject to change without notice.



Replaces Toro Reelmaster 6500D Parts

Cutting Unit - Models 03853, 03854 & 03856
Reel & Bedknife



| Item No | R&R Part No. | OEM Part No. | Description | Qty Req | Order Quantity |
|---------|-------------------|----------------------------------------------------------------------|------------------------------|---------|----------------|
| 106 | R94-2700 | 94-2700 | Spacer - Hardened | 2 | |
| 107 | R93-3012 | 93-3012 | Flap - Side | 1 | |
| 108 | R33105-060 | 33105-060 | Bolt - M10-1.5 x 60 Hx HD Fl | 2 | |
| 109 | R106-9004 | 106-9004, 93-9173, 98-9976, 99-2480, 99-2484, 99-5605 | Bumper - Rubber | 2 | |
| 110 | R3290-455 | 3290-455 | Washer - Belleville | 2 | |
| 111 | R33115-016 | 33115-016 | Bolt - Hex HD M10 x 16 | 2 | |
| 112 | R94-8945 | 94-8945 | Bushing - Bronze - Link Bar | 8 | |
| 113 | R94-2701 | 94-2701 | Washer - Hardened | 12 | |
| 114 | R94-2702 | 94-2702 | Bolt - Hex HD M12-1.75 x 50 | 6 | |
| 115 | R3256-42 | 3256-42 | Washer-Flat | 2 | |
| 116 | R283-71 | 283-71 | Pin - Lynch Heavy Duty | 1 | |
| 117 | R33104-040 | 33104-040 | Bolt - Hex Washer M8 x 40 | 1 | |
| 118 | R94-3489 | 75-8530, 94-3489 | Bolt - Hex HD M8 x 50 | 1 | |
| 119 | R104-2612 | 104-2612 | Nut - 8mm x 1.25 Fl Lock | 3 | |
| 119 | R14M7298 | 104-2612, 33004-00 | Nut - 8mm x 1.25 Flanged | 3 | |
| 120 | R93-3001 | 93-3001 | Washer | 2 | |
| 121 | R32121-36 | 32121-36 | Pin-Spring | 4 | |

All original equipment manufacturers names and part numbers are used for identification purposes only, and we are in no way implying that our products are original equipment parts. Prices subject to change without notice.