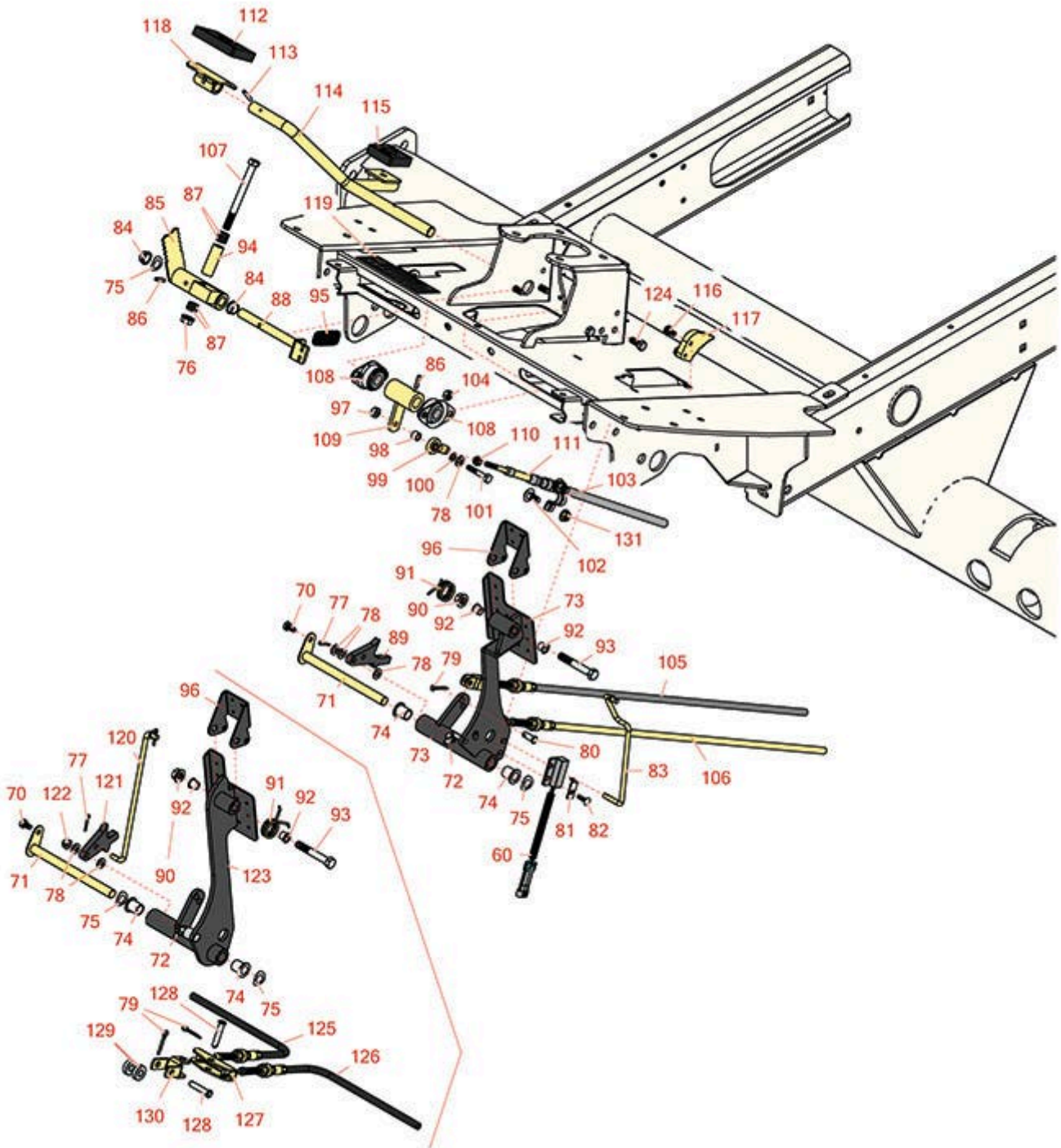




# Replaces Toro Reelmaster 5410-D Parts

Traction Unit  
Traction Pedal



Fits 5210 - 5610, 2010 and Up

All original equipment manufacturers names and part numbers are used for identification purposes only, and we are in no way implying that our products are original equipment parts. Prices subject to change without notice.



# Replaces Toro Reelmaster 5410-D Parts

Traction Unit  
Traction Pedal



Item No	R&R Part No.	OEM Part No.	Description	Qty Req	Order Quantity
60	<b>R100-1270</b>	100-1270	Sensor - Proximity	1	
<i>Tech Note: Fits 2006-2009:</i>					
70	<b>R12-3270</b>	12-3270, 30-0700, 32104-17, 9266714, Aug-80	Bolt - Hex Washer 1/4-20 x 1/2	1	
71	<b>R104-7179</b>	104-7179, 99-7169	Pivot-Pedal	1	
72	<b>R302-60</b>	302-60	Zerk - Grease 90 Deg.	1	
73	<b>R106-3712-03</b>	106-3712-03	Pedal-Brake	1	
<i>Tech Note: Fits 2006-2009:</i>					
74	<b>R256-155</b>	256-155, 265-155	Bushing - Flanged	2	
75	<b>R110-8982</b>	110-8982	Washer - Spring	2	
76	<b>R3296-39</b>	32127-25, 32128-36, 3290-357, 3296-17, 3296-22, 3296-39, 915663P, 99-7443	Locknut - 3/8-16 Nylon	1	
77	<b>R1023-4</b>	01-151-0150, 1023-4, 19-6220, 214-14, 215-54, 28-9-D, 3272-4, 3272-6, 513567, 932008P	Pin - Cotter 3/32 x 3/4	1	

All original equipment manufacturers names and part numbers are used for identification purposes only, and we are in no way implying that our products are original equipment parts. Prices subject to change without notice.



# Replaces Toro Reelmaster 5410-D Parts

Traction Unit  
Traction Pedal



Item No	R&R Part No.	OEM Part No.	Description	Qty Req	Order Quantity
78	<b>R3256-22</b>	24-9-BD, 3-1032, 3256-1, 3256-22, 93-0954, 93-0989	Washer - Flat 1/4 Yellow	3	
79	<b>R3272-10</b>	01-151-0120, 105-7512, 3272-10, N/A	Pin - Cotter 1/8 x 3/4	2	
80	<b>R283-62</b>	283-62	Pin - Clevis 5/16 x 3/4	2	
<i>Tech Note: Fits 2006-2009:</i>					
81	<b>R100-4872</b>	100-4872, 104-7702	Plate-Switch - Neutral	1	
<i>Tech Note: Fits 2006-2009:</i>					
82	<b>R3229-34</b>	3229-34	Bolt- Carriage 10	1	
83	<b>R110-0914</b>	110-0914	Rod-Pawl, Brake	1	
84	<b>R256-156</b>	256-156, 256-219	Bushing - Flanged	2	
85	<b>R115-8078</b>	106-3734	Mow Stop	1	
<i>Tech Note: Fits 2006-2009:</i>					
85	<b>R117-8066</b>	117-8066	Mow-Stop	1	
86	<b>R32121-6</b>	32121-6	Pin - Roll 3/16 x 1-1/4	2	
87	<b>R62-4420</b>	62-4420	Washer	8	
88	<b>R106-3731</b>	106-3731	Rod-Pivot	1	
89	<b>R106-3713</b>	106-3713	Detent	1	
<i>Tech Note: Fits 2006-2009:</i>					

All original equipment manufacturers names and part numbers are used for identification purposes only, and we are in no way implying that our products are original equipment parts. Prices subject to change without notice.



# Replaces Toro Reelmaster 5410-D Parts

Traction Unit  
Traction Pedal



Item No	R&R Part No.	OEM Part No.	Description	Qty Req	Order Quantity
90	<b>R104-8301</b>	104-8301, 104-9301, 109-6658, 133-7570	Locknut - 3/8-16 Nylon Flanged	1	
91	<b>R99-7140</b>	99-7140	Spring-Torsion	1	
92	<b>R52-2891</b>	52-2891	Bushing- Nylon	1	
93	<b>R101526</b>	01-150-0970, 01-178-0620, 101526, 20-53-AGD, 321-11, 3224-8, 323-11, 323-12, 323-31, 323-4, 323-47	Bolt - Hex HD 3/8-16 x 2-1/2 GR5	1	
94	<b>R95-6448</b>	95-6448	Spacer	1	
95	<b>R92-7305</b>	92-7305	Spring-Extension	1	
96	<b>R99-7963-03</b>	99-7963-03	Pedal - Park	1	
97	<b>R301504</b>	2296-42, 301504, 32127-24, 32128-33, 32146-17, 3296-16, 3296-42, 3296-42 , 915661P	Locknut - ESNA 1/4-20	1	
98	<b>R99-3545</b>	99-3545	Spacer	1	
99	<b>R2411-41</b>	2411-41	Rod End - Ball Joint	1	
100	<b>R24M7139</b>	24M7139, 3256-16, 33093-00, 43-5930	Washer - Flat 6mm	1	

All original equipment manufacturers names and part numbers are used for identification purposes only, and we are in no way implying that our products are original equipment parts. Prices subject to change without notice.



# Replaces Toro Reelmaster 5410-D Parts

Traction Unit  
Traction Pedal



Item No	R&R Part No.	OEM Part No.	Description	Qty Req	Order Quantity
100	<b>R6050-103</b>	48-8010, 48-8030	Washer - Flat	1	
101	<b>R400116</b>	20-7-AD, 30-9680, 321-69, 321-9, 3222-3, 400116	Bolt - Hex HD 1/4-20 x 1-1/2	1	
102	<b>R3230-23</b>	3230-23, Mar-61	Bolt - 5/16-18x3/4 - Carriage	6	
<i>Tech Note: Fits 2006-2009:</i>					
103	<b>R93-2092</b>	93-2092	Clamp - Cable	1	
<i>Tech Note: Fits 2006-2009:</i>					
104	<b>R3296-29</b>	1-804256, 3290-357, 3296-29, 915662P	Locknut - 5/16-18 ESNA	4	
<i>Tech Note: Fits 2006-2009:</i>					
105	<b>R110-9036</b>	110-9036	Cable - Brake RH	0	
<i>Tech Note: Fits 2006-2009:</i>					
106	<b>R110-9037</b>	110-9037	Cable - Brake LH	0	
<i>Tech Note: Fits 2006-2009:</i>					
107	<b>R323-17</b>	323-17	Bolt - Hex HD 3/8-16 x 4	1	
108	<b>R256-236</b>	256-236, Oct-40	Bearing - 5/8 Flanged 2 Bolt	2	
109	<b>R106-3719</b>	106-3719	Hub-Pedal - Traction	1	
110	<b>R3220-1</b>	3220-1	Nut - 1/4-28 Jam	1	
111	<b>R107-2084</b>	107-2084	Traction Cable Assy	1	

All original equipment manufacturers names and part numbers are used for identification purposes only, and we are in no way implying that our products are original equipment parts. Prices subject to change without notice.



# Replaces Toro Reelmaster 5410-D Parts

Traction Unit  
Traction Pedal



Item No	R&R Part No.	OEM Part No.	Description	Qty Req	Order Quantity
112	<b>R74-9100</b>	74-9100	Rubber Foot Pad - Forward	1	
113	<b>R32121-45</b>	32121-113, 32121-45, 32121-92	Pin - Spring Roll 5/32 x 1	1	
114	<b>R106-3840</b>	106-3840	Pedal-Traction	1	
115	<b>R74-9110</b>	74-9110	Rubber Foot Pad - Reverse	1	
116	<b>R3234-13</b>	3234-13, 960151P	Bolt - Flanged Hex 1/4-20	2	
117	<b>R99-7214</b>	99-7214	Pawl - Brake	1	
118	<b>R49-6440-03</b>	117-9507, 49-6440, 49-6440-03	Pedal - Forward Assy	1	
119	<b>R110-8921</b>	110-8921	Decal-Speed, Mow	1	
120	<b>R115-0129</b>	115-0129	Rod-Pawl - Brake	1	
<i>Tech Note: Fits 2010 &amp; Up:</i>					
121	<b>R117-0238</b>	117-0238	Detent	1	
<i>Tech Note: Fits 2010 &amp; Up:</i>					
122	<b>R104-7201</b>	104-7201	Locknut - 1/4-20 ESNA Flanged	1	
<i>Tech Note: Fits 2010 &amp; Up:</i>					
123	<b>R115-0120-03</b>	115-0120-03	Pedal - Brake	1	
<i>Tech Note: Fits 2010 &amp; Up:</i>					

All original equipment manufacturers names and part numbers are used for identification purposes only, and we are in no way implying that our products are original equipment parts. Prices subject to change without notice.



# Replaces Toro Reelmaster 5410-D Parts

Traction Unit  
Traction Pedal



Item No	R&R Part No.	OEM Part No.	Description	Qty Req	Order Quantity
124	<b>R322-3</b>	01-150-1420, 01-178-0506, 20-24-AD, 20-24-AGD, 322-3, 48-9270, 513339, 908017P	Bolt - Hex HD 5/16-18 x 3/4	4	
125	<b>R117-0106</b>	117-0106	Cable - Brake - RH	1	
<i>Tech Note: Fits 2010 &amp; Up. Fits 2010 &amp; Up:</i>					
126	<b>R117-0107</b>	117-0107	Cable - Brake - LH	1	
<i>Tech Note: Fits 2010 &amp; Up. Fits 2010 &amp; Up:</i>					
127	<b>R115-8059</b>	115-8059	Yoke - Cable	1	
<i>Tech Note: Fits 2010 &amp; Up:</i>					
128	<b>R283-14</b>	283-14	Pin - Clevis	2	
<i>Tech Note: Fits 2010 &amp; Up:</i>					
129	<b>R5-0652</b>	5-0652	Spacer	2	
<i>Tech Note: Fits 2010 &amp; Up:</i>					
130	<b>R115-8060</b>	115-8060	Clevis - Double	1	
<i>Tech Note: Fits 2010 &amp; Up:</i>					
131	<b>R104-8300</b>	104-8300, 104-8300 , 119-4041	Locknut - 5/16-18 Flanged Y/Zinc	2	

All original equipment manufacturers names and part numbers are used for identification purposes only, and we are in no way implying that our products are original equipment parts. Prices subject to change without notice.