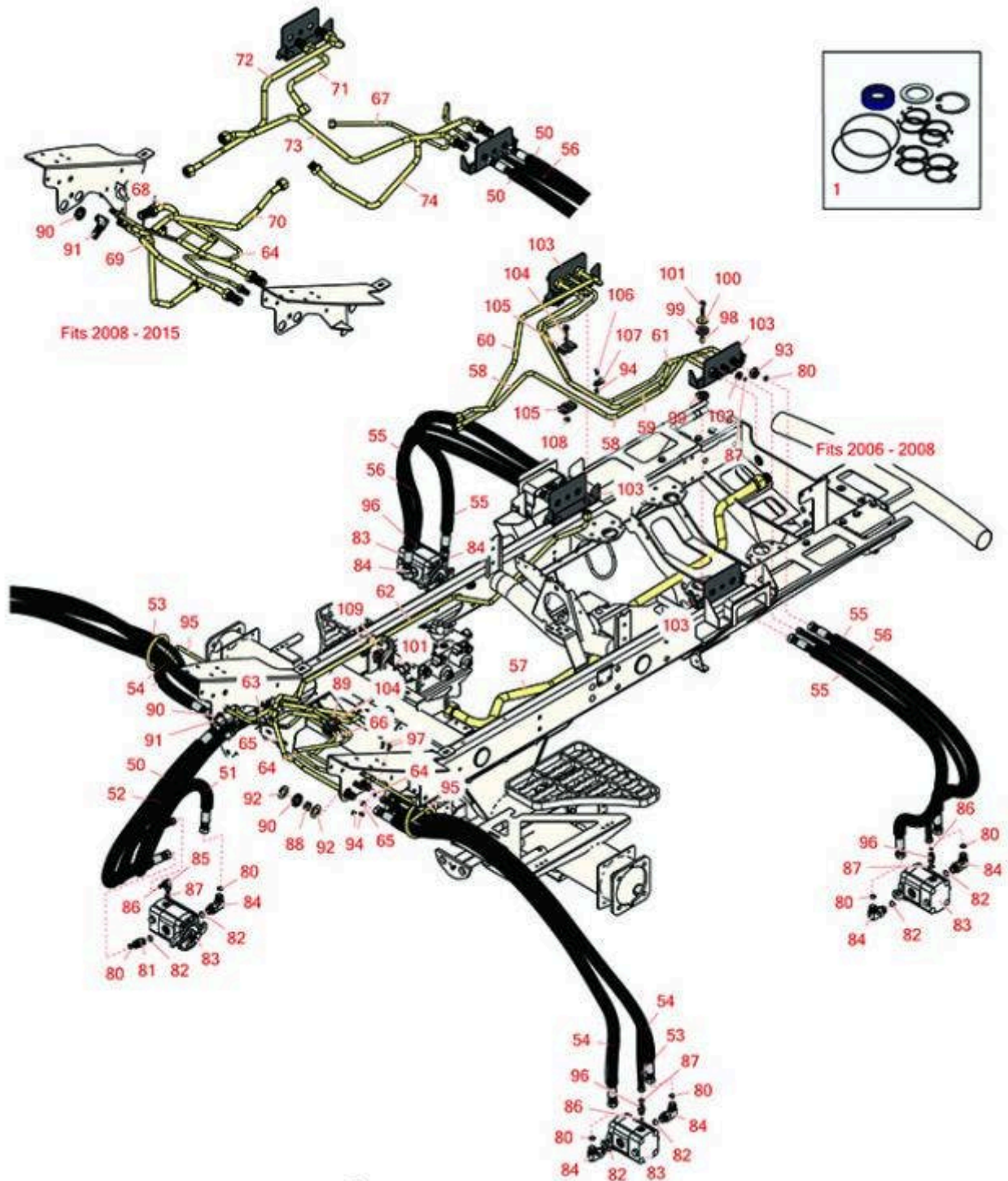




Replaces Toro Reelmaster 5410-D Parts

*Traction Unit
Reel Hydraulics*



All original equipment manufacturers names and part numbers are used for identification purposes only, and we are in no way implying that our products are original equipment parts. Prices subject to change without notice.



Replaces Toro Reelmaster 5410-D Parts

Traction Unit
Reel Hydraulics



Item No	R&R Part No.	OEM Part No.	Description	Qty Req	Order Quantity
Overhaul Kits and Service Tools					
1	R112-9184	112-9184	Seal Kit - Fits Toro and Turolla R112-9200 Motor	1	
1	R119-6992	119-6992	Seal Kit - Fits R119-6987 & R119-6988 Cylinder	1	
Hoses					
50	R106-3669	106-3669	Hydraulic Hose Assy	1	
<i>Tech Note: Fits 2006-2009:</i>					
50	R114-0633	114-0633	Hydraulic Hose Assy	1	
51	R106-3670	106-3670	Hydraulic Hose Assy	1	
<i>Tech Note: Fits 2006-2009:</i>					
51	R117-5190	117-5190	Hydraulic Hose Assy	1	
52	R106-3671	106-3671	Hydraulic Hose Assy	1	
53	R106-3680	106-3680	Hose	1	
54	R114-8868	114-8868	Hydraulic Hose Assy	2	
54	R117-5188	117-5188	Hydraulic Hose Assy	1	
55	R106-3672	106-3672	Hydraulic Hose Assy	4	
<i>Tech Note: Fits 2006-2009:</i>					
56	R98-4590	98-4590	Hydraulic Hose Assy	2	
57	R108-1700	108-1700	Tube Assy	1	
58	R108-1701	108-1701	Tube Assy	1	
<i>Tech Note: Fits 2006-2009:</i>					
59	R108-1702	108-1702	Tube Assy	1	
<i>Tech Note: Fits 2006-2009:</i>					

All original equipment manufacturers names and part numbers are used for identification purposes only, and we are in no way implying that our products are original equipment parts. Prices subject to change without notice.



Replaces Toro Reelmaster 5410-D Parts

Traction Unit
Reel Hydraulics



Item No	R&R Part No.	OEM Part No.	Description	Qty Req	Order Quantity
60	R108-1703	108-1703	Tube Assy	1	
<i>Tech Note: Fits 2006-2009:</i>					
61	R108-1704	108-1704	Line - Hyd	1	
<i>Tech Note: Fits 2006-2009:</i>					
62	R108-1705	108-1705	Tube Assy	1	
63	R108-1708	108-1708	Tube Assy	1	
<i>Tech Note: Fits 2006-2009:</i>					
64	R110-5286	110-5286	Tube Assy	1	
65	R110-5287	110-5287	Tube Assy	1	
<i>Tech Note: Fits 2006-2009:</i>					
66	R110-5288	110-5288	Tube Assy	1	
67	R114-8887	114-8887	Tube Assy	1	
68	R117-0137	117-0137	Tube Assy	1	
69	R117-0138	117-0138	Tube Assy	1	
70	R117-0139	117-0139	Tube Assy - Hyd	1	
71	R117-0140	117-0140	Tube Assy	1	
72	R117-0141	117-0141	Tube Assy	1	
73	R117-0142	117-0142	Tube Assy	1	
74	R117-0177	117-0177	Tube Assy	1	
Other Parts Available					
80	R237-30	23-6320, 237-30	O-Ring - Seal	10	

All original equipment manufacturers names and part numbers are used for identification purposes only, and we are in no way implying that our products are original equipment parts. Prices subject to change without notice.



Replaces Toro Reelmaster 5410-D Parts

Traction Unit
Reel Hydraulics



Item No	R&R Part No.	OEM Part No.	Description	Qty Req	Order Quantity
81	R340-4	340-4	Hydraulic Fitting - Male Connector	1	
82	R237-79	237-79	O-Ring	10	
83	R120-2072	100-6426, 108-6487, 112-9200, 120-2072, 93-1375	Hydraulic Gear Motor	5	
84	R340-98	340-98	Hydraulic Fitting	9	
85	R340-132	340-132	Hydraulic Fitting - 90 Deg	1	
86	R237-21	237-21, 327-21	O-Ring	1	
87	R237-22	107-8844, 237-22, 237-78	O-Ring	5	
88	R69-8960	69-8960	Spacer	5	
<i>Tech Note: Fits 2006-2009:</i>					
88	R69-9000	125-1984, 69-9000	Spacer	5	
<i>Tech Note: Fits 2010 & Up:</i>					
89	R56-7972	56-7972	Clamp - Tube	2	
<i>Tech Note: Fits 2006-2009:</i>					
89	R56-7970	56-7970	Plastic Clamp	2	
<i>Tech Note: Fits 2010 & Up:</i>					
90	R240-5	240-5	Grommet - Rubber	5	
<i>Tech Note: Fits 2006-2009:</i>					
90	R240-3	240-3	Grommet- Rubber	5	

All original equipment manufacturers names and part numbers are used for identification purposes only, and we are in no way implying that our products are original equipment parts. Prices subject to change without notice.



Replaces Toro Reelmaster 5410-D Parts

Traction Unit
Reel Hydraulics



Item No	R&R Part No.	OEM Part No.	Description	Qty Req	Order Quantity
<i>Tech Note: Fits 2010 & Up:</i>					
91	R93-9151	93-9151	Hydraulic Fitting	1	
<i>Tech Note: Fits 2006-2009:</i>					
91	R340-72	340-72, 96-0865	Fitting-Bulkhead,	1	
<i>Tech Note: Fits 2010 & Up:</i>					
92	R69-8930	69-8930	Washer	6	
<i>Tech Note: Fits 2006-2009:</i>					
93	R340-127	340-127	Nut - Bulkhead	9	
<i>Tech Note: Fits 2006-2009:</i>					
94	R104-7201	104-7201	Locknut - 1/4-20 ESNA Flanged	4	
95	R108-7585	108-7585	Guide-Hose	2	
96	R340-92	340-92	Hydraulic Fitting - Striaight	1	
97	R3229-1	01-173-0406, 01-178-0408, 3229-1, 3229-25, 900015P	Bolt - 1/4-20 x 3/4 - Carriage	4	
98	R99-8611	99-8611	Spacer	4	
99	R240-11	240-11	Bushing - Rubber - Flanged	8	
100	R105-3048	105-3048	Washer - Flat	4	
101	R32144-57	32144-57	Bolt - Hex Washer 5/16-18 x 1-1/2	4	
102	R340-78	340-78	Nut - Lock Bulkhead	4	
103	R108-1814-03	108-1814-03	Bracket-Bulkhead	2	

All original equipment manufacturers names and part numbers are used for identification purposes only, and we are in no way implying that our products are original equipment parts. Prices subject to change without notice.



Replaces Toro Reelmaster 5410-D Parts

*Traction Unit
Reel Hydraulics*



Item No	R&R Part No.	OEM Part No.	Description	Qty Req	Order Quantity
103	R117-0174-03	117-0174-03	Bracket-Bulkhead	2	
104	R94-5780	94-5780	Bolt - 5/16-18 x 1 3/4 Hx Fl	1	
105	R56-7976	56-7976	Clamp - Tube	2	
106	R3234-5	3234-5, 62-3310	Bolt - 5/16-18x3/4 Hx Ser Was HD	1	
107	R2412-89	2412-113, 2412-89	Clamp	1	
108	R104-8300	104-8300, 104-8300 , 119-4041	Locknut - 5/16-18 Flanged Y/Zinc	2	
109	R56-7973	56-7973	Clamp - Tube	2	

All original equipment manufacturers names and part numbers are used for identification purposes only, and we are in no way implying that our products are original equipment parts. Prices subject to change without notice.