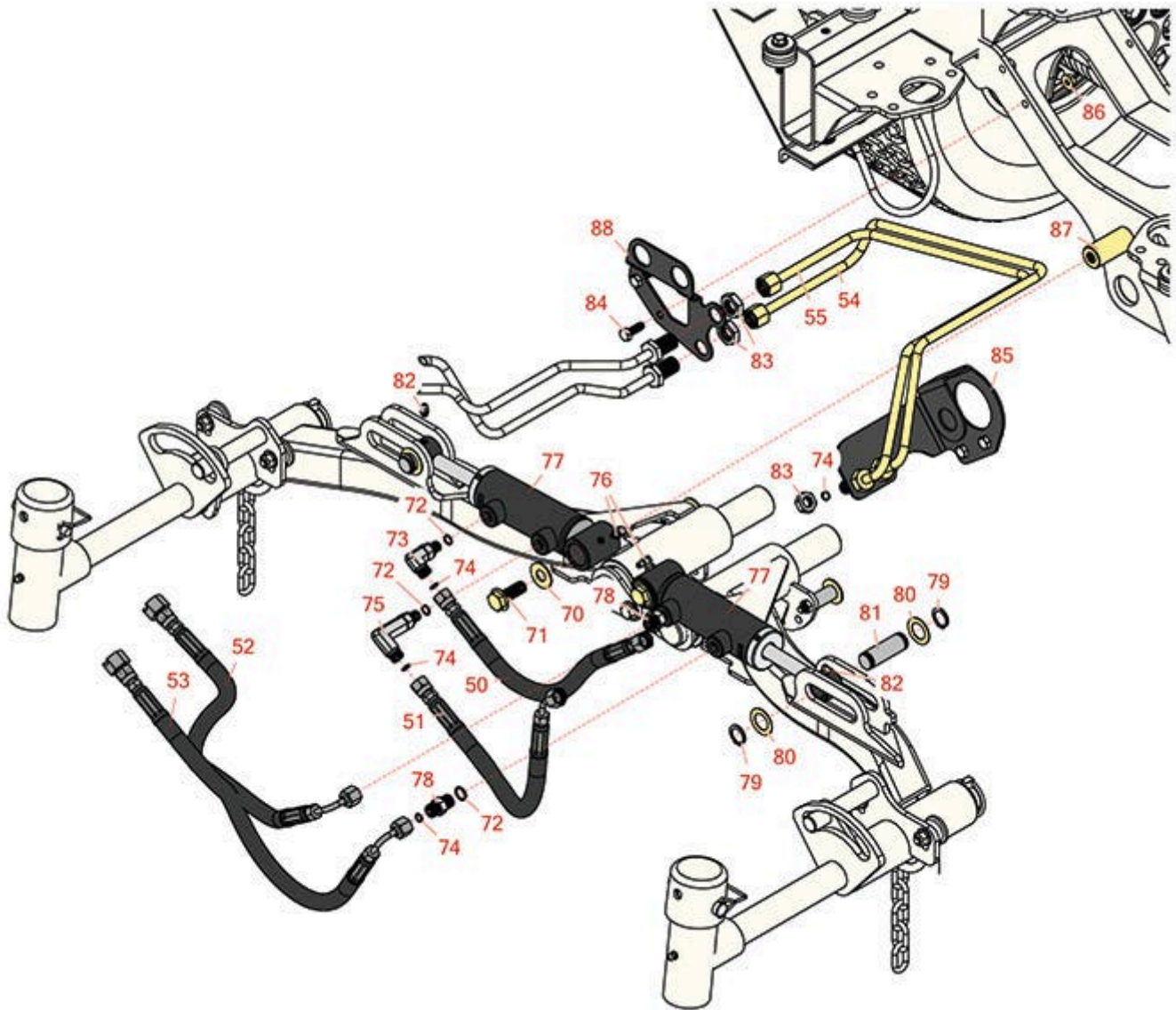




# Replaces Toro Reelmaster 5410-D Parts

Traction Unit

Rear Lift Cylinder & Hydraulics



All original equipment manufacturers names and part numbers are used for identification purposes only, and we are in no way implying that our products are original equipment parts. Prices subject to change without notice.



# Replaces Toro Reelmaster 5410-D Parts

Traction Unit

Rear Lift Cylinder & Hydraulics



Item No	R&R Part No.	OEM Part No.	Description	Qty Req	Order Quantity
<b>Hoses</b>					
50	<b>R110-0931</b>	110-0931	Hydraulic Hose Assy	1	
51	<b>R110-8966</b>	110-8966	Hydraulic Hose Assy	1	
52	<b>R110-0929</b>	110-0929	Hydraulic Hose Assy	1	
53	<b>R110-0930</b>	110-0930, 110-2930	Hydraulic Hose Assy	1	
54	<b>R110-0916</b>	110-0916	Tube Assy	1	
<i>Tech Note: Fits 2006-2009:</i>					
55	<b>R110-0915</b>	110-0915	Tube Assy	1	
<i>Tech Note: Fits 2006-2009:</i>					
<b>Other Parts Available</b>					
70	<b>R453017</b>	01-166-0050, 01-166-0240, 01-166-0800, 24-13-AD, 24-14-AD, 32-8110, 3256-26, 3256-6, 453017, 69-8980, 87-7270	Washer - Flat 1/2	2	
71	<b>R3234-32</b>	3234-32, 3434-32	Bolt - 1/2-13 x 1 1/4 Hex Flange Bolt	2	
72	<b>R237-22</b>	107-8844, 237-22, 237-78	O-Ring	2	
73	<b>R340-132</b>	340-132	Hydraulic Fitting - 90 Deg	1	
74	<b>R237-21</b>	237-21, 327-21	O-Ring	4	

All original equipment manufacturers names and part numbers are used for identification purposes only, and we are in no way implying that our products are original equipment parts. Prices subject to change without notice.



# Replaces Toro Reelmaster 5410-D Parts

*Traction Unit*

*Rear Lift Cylinder & Hydraulics*



Item No	R&R Part No.	OEM Part No.	Description	Qty Req	Order Quantity
75	<b>R100-7695</b>	100-7695	Adapter-Hyd	1	
76	<b>R302-60</b>	302-60	Zerk - Grease 90 Deg.	2	
77	<b>R107-2034</b>	107-2034, 110-9034	Hydraulic Cylinder	2	
78	<b>R340-92</b>	340-92	Hydraulic Fitting - Striaight	2	
79	<b>R32120-93</b>	32120-93	Snap Ring - HD	4	
80	<b>R3-6498</b>	3--6498, 3-6498, 47-8270	Washer - Thrust	4	
81	<b>R104-0046</b>	104-0046	Pin - Slide - Cylinder	2	
82	<b>R302-5</b>	21-6010, 302-11, 302-37, 302-47, 302-5, 302-57, 302-58, 302-6, 31-0300, 32-9660, 60-0800, 62-3880, 92-4181	Fitting - Grease	2	
83	<b>R340-78</b>	340-78	Nut - Lock Bulkhead	4	
84	<b>R322-4</b>	322-4, 3290-115, 908018P	Bolt - Hex HD 5/16-18 x 7/8	4	
85	<b>R110-0917-01</b>	110-0917-01	Bracket-Bulkhead - LH	1	
86	<b>R104-8300</b>	104-8300, 104-8300 , 119-4041	Locknut - 5/16-18 Flanged Y/Zinc	4	
87	<b>R107-2077</b>	107-2077	Pin - Cylinder	2	

All original equipment manufacturers names and part numbers are used for identification purposes only, and we are in no way implying that our products are original equipment parts. Prices subject to change without notice.



# Replaces Toro Reelmaster 5410-D Parts

*Traction Unit*

*Rear Lift Cylinder & Hydraulics*



Item No	R&R Part No.	OEM Part No.	Description	Qty Req	Order Quantity
---------	--------------	--------------	-------------	---------	----------------

*Tech Note: Fits 2006-2009:*

88	<b>R110-0918-01</b>	110-0918-01	Bracket-Bulkhead - RH	1	
----	---------------------	-------------	-----------------------	---	--

All original equipment manufacturers names and part numbers are used for identification purposes only, and we are in no way implying that our products are original equipment parts. Prices subject to change without notice.