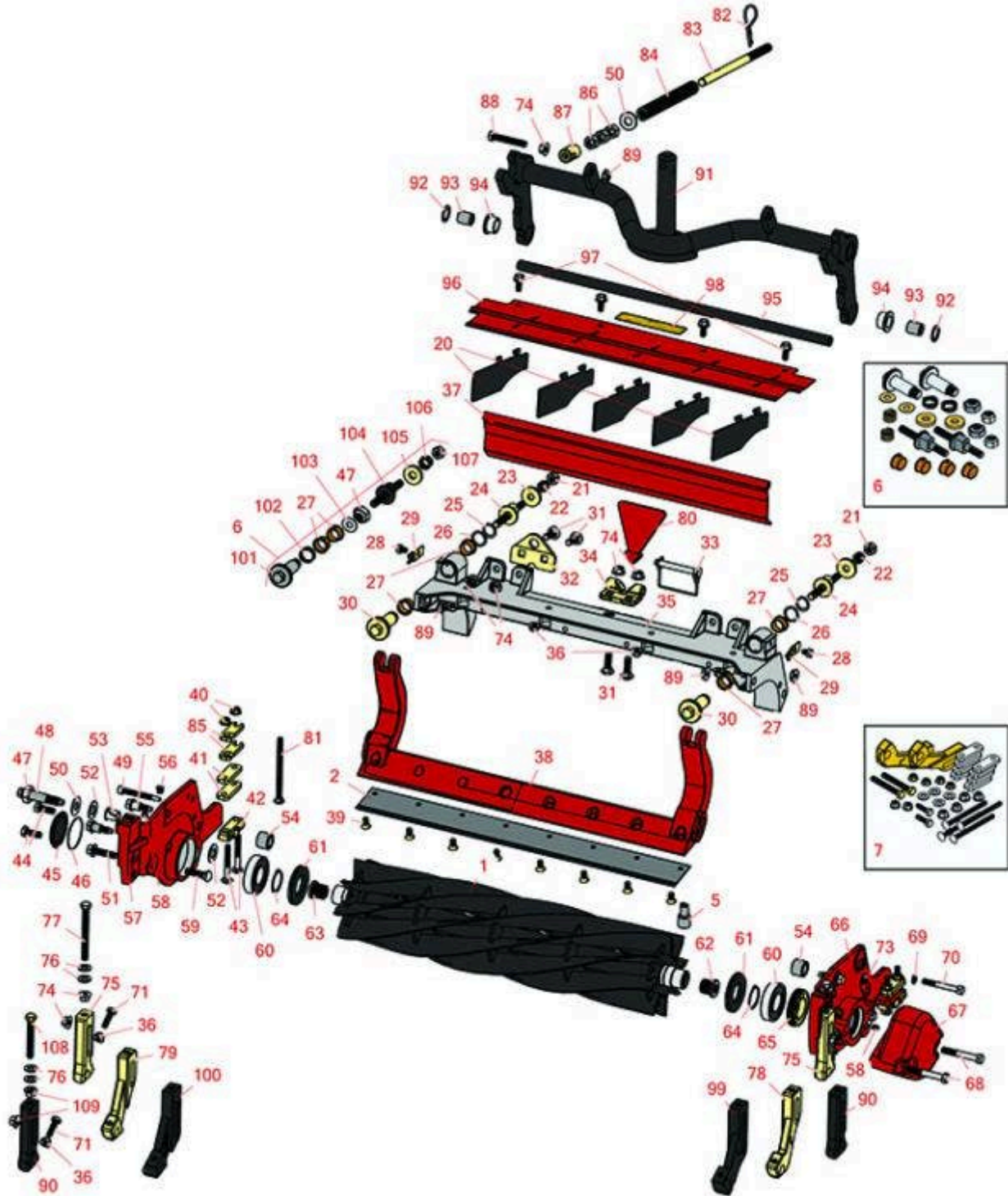




# Replaces Toro Reelmaster 5410-D Parts

DPA Cutting Unit with 5" Reel - Model 03661, 03694 & 03695

Reel & Bedknife



All original equipment manufacturers names and part numbers are used for identification purposes only, and we are in no way implying that our products are original equipment parts. Prices subject to change without notice.



# Replaces Toro Reelmaster 5410-D Parts

DPA Cutting Unit with 5" Reel - Model 03661, 03694 & 03695

Reel & Bedknife



Item No	R&R Part No.	OEM Part No.	Description	Qty Req	Order Quantity
<b>R&amp;R Reels, Lifetime Guaranteed</b>					
1	<b>R108-9070</b>	108-9070	Reel - 5 Blade 22x5	1	
1	<b>R127-2070</b>	127-2070	Reel - 5 Blade Radial 22x5	1	
1	<b>R137-8421</b>	137-8421	Reel - 5 Blade Razor Series w/Bearings and Seals 22x5	1	
1	<b>R108-9071</b>	108-9071	Reel - 8 Blade 22x5	1	
1	<b>R127-2065</b>	127-2065	Reel - 8 Blade Radial 22x5	1	
1	<b>R133-8201</b>	133-8201	Reel - 8 Blade Razor Series Radial 22x5	1	
1	<b>R137-8422</b>	137-8422	Reel - 8 Blade Razor Series Radial w/Bearings and Seals 22x5	1	
1	<b>R137-8417</b>	137-8417	Reel - 11 Blade w/Bearings and Seals 22x5	1	
1	<b>R127-2066</b>	117-3793, 127-2066	Reel - 11 Blade Radial 22x5	1	
1	<b>R133-8203</b>	133-8203	Reel - 11 Blade Razor Series Forward Swept 22x5	1	
1	<b>R137-8423</b>	137-8423	Reel - 11 Blade Razor Series Forward Swept w/Bearings and Seals 22x5	1	
<b>R&amp;R Bedknives, Lifetime Guaranteed</b>					
2	<b>R110-4084</b>	110-4084	Bedknife - Low Cut	1	
2	<b>R108-9096</b>	108-9096	Bedknife - Standard	1	
2	<b>R110-4074</b>	110-4074	Bedknife - High Cut	1	
2	<b>R120-1640</b>	120-1640	Bedknife - Low Cut Extended	1	
<b>R&amp;R Razor Tool Steel Bedknives, Lifetime Guaranteed</b>					

All original equipment manufacturers names and part numbers are used for identification purposes only, and we are in no way implying that our products are original equipment parts. Prices subject to change without notice.



# Replaces Toro Reelmaster 5410-D Parts

DPA Cutting Unit with 5" Reel - Model 03661, 03694 & 03695

Reel & Bedknife



Item No	R&R Part No.	OEM Part No.	Description	Qty Req	Order Quantity
2	<b>R108-9095</b>	108-9095, 137-0833	Bedknife - Razor Tool Steel - 22 High Cut	1	
2	<b>R119-4280</b>	119-4280	Bedknife - Razor Tool Steel - 22 x 3/8 Extended	1	

## Overhaul Kits and Service Tools

5	<b>R51-0880</b>	51-0880	Bedknife Screw Driver Tool	0	
6	<b>R120-7230</b>	120-7230	Overhaul Kit - Fits DPA Units	0	
<i>Tech Note: Incl 2 ea.: R108-0015, R115-7039, R119-4155, R120-5116, R120-5118, R120-5120, R3296-33, R3296-48 &amp; 4 ea: R106-5344:</i>					
7	<b>R110-9600</b>	110-9600	High HOC Kit	1	
<i>Tech Note: Includes 1 ea.: R120-0404, R120-0405 &amp; 2 ea: R112-7451, R322-16, R445722 &amp; 4 ea.: R106-9758, R104-8300, R453011, R104-8301 &amp; 8 ea: R106-3925:</i>					

## Other Parts Available

20	<b>R110-1706</b>	110-1706	Deflector	5	
21	<b>R33025-00</b>	32025-00, 33025-00	Locknut - 10mm x 1.5 Jam	2	
22	<b>R99-3755</b>	99-3755	Spring - Bed Bar Adjusting	2	
23	<b>R99-2098</b>	99-2098	Washer - Bed Bar Adjuster	2	
24	<b>R99-2096</b>	99-2096	Screw - Bed Bar Adjustment - M10 Thrd 1 End	2	
25	<b>R32120-93</b>	32120-93	Snap Ring - HD	2	
26	<b>R106-5335</b>	106-5335	Wave Washer - Reel Adjusting	2	
27	<b>R106-5344</b>	106-5344	Bushing - Flanged and Keyed	4	
28	<b>R114-9396</b>	114-9396, 119-4067	Bolt - Hex HD 5/16-18 x 3/8	2	

All original equipment manufacturers names and part numbers are used for identification purposes only, and we are in no way implying that our products are original equipment parts. Prices subject to change without notice.



# Replaces Toro Reelmaster 5410-D Parts

DPA Cutting Unit with 5" Reel - Model 03661, 03694 & 03695

Reel & Bedknife



Item No	R&R Part No.	OEM Part No.	Description	Qty Req	Order Quantity
29	<b>R99-2097</b>	99-2097	Detent - Bed Bar Adjuster	2	
30	<b>R106-5363</b>	106-5363	Shaft - Adjusting - Bed Bar - Stainless	2	
31	<b>R3231-25</b>	01-173-0610, 30-9970, 3231-25, 3231-3, 900064P	Bolt - Carriage 3/8-16 x 1-1/4	4	
32	<b>R110-4069</b>	110-4069	Bracket	1	
33	<b>R107-7400</b>	107-7400	Pin - Lynch	1	
34	<b>R110-4058</b>	110-4058	Bracket - Chain	1	
35	<b>R107-2951</b>	107-2951	Frame	1	
36	<b>R445722</b>	30-8980, 32128-2, 32128-20, 32128-20 , 445722	Nut - Serrated Washer	4	
37	<b>R107-7777-01</b>	107-7777-01	Grass Shield Assy - Rear	1	
38	<b>R105-8095-01</b>	105-8095-01	Bed Bar - Fits OEM Units Only	1	
38	<b>R150905</b>		Bed Bar - Fits R&R Units Only	1	
39	<b>R150476</b>	3-3816, 3-6462, 52-4910, 57-4910	Screw - Bedknife 5/16-18 x 5/8	8	
40	<b>R104-8300</b>	104-8300, 104-8300 , 119-4041	Locknut - 5/16-18 Flanged Y/Zinc	4	
41	<b>R106-3925</b>	106-3925	Shim - 1/4 - Rear Roller HOC	8	
42	<b>R106-3924</b>	106-3924	Bracket - Rear Roller	2	

All original equipment manufacturers names and part numbers are used for identification purposes only, and we are in no way implying that our products are original equipment parts. Prices subject to change without notice.



# Replaces Toro Reelmaster 5410-D Parts

DPA Cutting Unit with 5" Reel - Model 03661, 03694 & 03695

Reel & Bedknife



Item No	R&R Part No.	OEM Part No.	Description	Qty Req	Order Quantity
43	<b>RP17609-2</b>	106-9758, 3230-7	Bolt - Carriage 5/16-18 x 1-1/2	4	
44	<b>R3234-11</b>	3234-11	Bolt - Hex Washer HD	2	
45	<b>R150485</b>	2410-30, 2410-30OSS	Cap - Protective Bearing Housing	1	
46	<b>R237-68</b>	237-68	O-Ring	2	
47	<b>R3296-33</b>	3296-33	Locknut - 5/8-18 ESNA Jam	2	
48	<b>R106-9623</b>	106-9623	Bolt - Bedbar	2	
49	<b>R107-7773</b>	107-7773	Bolt - Soc HD Cap 5/16-18 x 2-1/2	1	
50	<b>R453017</b>	01-166-0050, 01-166-0240, 01-166-0800, 24-13-AD, 24-14-AD, 32-8110, 3256-26, 3256-6, 453017, 69-8980, 87-7270	Washer - Flat 1/2	2	
51	<b>R3234-19</b>	3234-19	Bolt - Hex Washer 3/8-16x1-3/4	2	
52	<b>R61-1950</b>	61-1950	Washer - Nylon - Bed Bar	4	
53	<b>R56-9520</b>	56-9520	Bushing - Nyliner	2	
54	<b>R106-9618</b>	106-9618	Bushing - Rubber	2	
55	<b>R107-2979</b>	107-2979	Bolt - Shoulder	4	
56	<b>R170714</b>	302-34, 302-39, 62-3520	Fitting - Pressure Relief	2	

All original equipment manufacturers names and part numbers are used for identification purposes only, and we are in no way implying that our products are original equipment parts. Prices subject to change without notice.



# Replaces Toro Reelmaster 5410-D Parts

DPA Cutting Unit with 5" Reel - Model 03661, 03694 &

03695

Reel & Bedknife



Item No	R&R Part No.	OEM Part No.	Description	Qty Req	Order Quantity
57	<b>R108-9081</b>	108-9081	Side Plate - RH - Fits OEM Units Only	1	
57	<b>R150901</b>		Side Plate - RH - Fits R&R Units Only	1	
58	<b>R302-5</b>	21-6010, 302-11, 302-37, 302-47, 302-5, 302-57, 302-58, 302-6, 31-0300, 32-9660, 60-0800, 62-3880, 92-4181	Fitting - Grease	2	
59	<b>R3231-4</b>	01-157-0440, 01-173-0612, 3231-4	Bolt - Carriage 3/8-16 x 1-1/2	2	
60	<b>R93-2489</b>	93-2489	Bearing - Reel	2	
61	<b>R107-4028</b>	105-6757, 107-4028	Seal - Grease	2	
62	<b>R105-8075</b>	105-8075	Insert - Threaded - RH - 8 Tooth	1	
63	<b>R105-8076</b>	105-8076	Insert - Threaded - LH - 8 Tooth	1	
64	<b>R92-2601</b>	92-2601	Snap Ring	2	
65	<b>R107-2954</b>	107-2954	Nut - Bearing Adjuster	1	
66	<b>R108-9080</b>	108-9080	Side Plate - LH - Fits OEM Units Only	1	
66	<b>R150900</b>		Side Plate - LH - Fits R&R Units Only	1	
67	<b>R108-9090-01</b>	108-9090-01	Weight	1	

All original equipment manufacturers names and part numbers are used for identification purposes only, and we are in no way implying that our products are original equipment parts. Prices subject to change without notice.



# Replaces Toro Reelmaster 5410-D Parts

DPA Cutting Unit with 5" Reel - Model 03661, 03694 & 03695

Reel & Bedknife



Item No	R&R Part No.	OEM Part No.	Description	Qty Req	Order Quantity
68	<b>R101526</b>	01-150-0970, 01-178-0620, 101526, 20-53-AGD, 321-11, 3224-8, 323-11, 323-12, 323-31, 323-4, 323-47	Bolt - Hex HD 3/8-16 x 2-1/2 GR5	2	
69	<b>R3256-74</b>	3256-74	Washer - Flat	1	
70	<b>R322-14</b>	01-150-0830, 01-178-0524, 30-8900, 322-14	Bolt - Hex HD 5/16-18 x 3 GR5	1	
71	<b>R322-16</b>	322-16, Apr-00	Bolt - Hex HD 5/16-18 x 1-1/8	2	
73	<b>R106-4214</b>	106-4214	Set Screw - 1/4-20 x 1/2 Cone Point	1	
74	<b>R32128-19</b>	104-8301, 104-9301, 32128-19	Locknut - 3/8-16 Flanged Top Lock	4	
75	<b>R107-2952</b>	107-2952	Bracket - Front Roller	2	

All original equipment manufacturers names and part numbers are used for identification purposes only, and we are in no way implying that our products are original equipment parts. Prices subject to change without notice.



# Replaces Toro Reelmaster 5410-D Parts

DPA Cutting Unit with 5" Reel - Model 03661, 03694 & 03695

Reel & Bedknife



Item No	R&R Part No.	OEM Part No.	Description	Qty Req	Order Quantity
76	<b>R453011</b>	01-166-0100, 01-166-0120, 01-166-0270, 01-166-0500, 01-166-0600, 01-166-0620, 132-4593, 2356-3, 237-12, 24-10-AD, 24-11-AD, 24-11-BD, 24-12-AD, 24-12-BD, 30-9310, 32-8190, 3256-24, 3256-3, 3256-36, 3256-4, 453011, 47-9950, 48-9220, 513458, 7-0052	Washer - Flat 3/8 SAE Y/Zinc	4	
77	<b>R107-4026</b>	107-4026	Bolt - Hex Tap 3/8-16 x 3-3/4	2	
78	<b>R108-4213</b>	108-4213	Bracket- HOC - LH - Groomer	1	
79	<b>R108-4214</b>	108-4214	Bracket-HOC - RH - Groomer	1	
80	<b>R110-4088-03</b>	110-4088-03, 119-8010-03	Kickstand	1	
81	<b>R3230-30</b>	3230-30	Bolt - Carriage 5/16x4 1/2	4	
82	<b>R92-2762</b>	92-2762	Pin - Snap	1	
83	<b>R107-2970</b>	107-2970	Rod - Spring	1	
84	<b>R108-9084</b>	108-9084	Spring	1	
85	<b>R119-0626</b>	119-0626	Shim - Roller - 1/4 in - Slotted	8	

All original equipment manufacturers names and part numbers are used for identification purposes only, and we are in no way implying that our products are original equipment parts. Prices subject to change without notice.





# Replaces Toro Reelmaster 5410-D Parts

DPA Cutting Unit with 5" Reel - Model 03661, 03694 & 03695

Reel & Bedknife



Item No	R&R Part No.	OEM Part No.	Description	Qty Req	Order Quantity
86	<b>R443818</b>	01-191-0813, 3218-18, 3218-5, 3248-18	Nut - 1/2-13 Hex Jam Zinc	3	
87	<b>R99-8662</b>	99-8662	Tube - Spring	1	
88	<b>R104-3396</b>	104-3396	Bolt - Hex HD 3/8-16 x 2-1/4	1	
89	<b>R32128-43</b>	30-8990, 32128-43, 3290-357	Nut - Flanged Whiz - 3/8-16	5	
90	<b>R125-2796</b>	125-2796	Bracket- Front HOC	2	
<i>Tech Note: Fits 2013 &amp; Newer:</i>					
91	<b>R106-3937</b>	106-3937	Carrier Frame Assy	1	
92	<b>R67-9410</b>	67-9410	Washer - Clevis Pin	1	
93	<b>R108-4279</b>	108-4279	Spacer - Frame	2	
94	<b>R93-2877</b>	93-2877	Bushing - Flanged	2	
95	<b>R108-4284</b>	108-4284	Shaft - Support	1	
96	<b>R107-2996</b>	107-2996	Grass Shield - Front	1	
97	<b>R3234-5</b>	3234-5, 62-3310	Bolt - 5/16-18x3/4 Hx Ser Was HD	4	
98	<b>R93-6688</b>	93-6688	Decal - Warning	1	
99	<b>R120-0404</b>	120-0404	Bracket- High HOC - LH	1	
<i>Tech Note: Fits 2011 &amp; Newer:</i>					
100	<b>R120-0405</b>	120-0405	Bracket - High HOC - RH	1	
<i>Tech Note: Fits 2011 &amp; Newer:</i>					

All original equipment manufacturers names and part numbers are used for identification purposes only, and we are in no way implying that our products are original equipment parts. Prices subject to change without notice.



# Replaces Toro Reelmaster 5410-D Parts

DPA Cutting Unit with 5" Reel - Model 03661, 03694 & 03695

Reel & Bedknife



Item No	R&R Part No.	OEM Part No.	Description	Qty Req	Order Quantity
101	<b>R120-5118</b>	120-5118	Shaft - Adjuster	2	
<i>Tech Note: 2012 &amp; Newer:</i>					
102	<b>R120-5116</b>	120-5116	Washer - Wave	2	
103	<b>R108-0015</b>	108-0015	Washer - Flat	2	
104	<b>R115-7039</b>	115-7039	Screw - Adjuster - Bedbar	2	
105	<b>R119-4155</b>	119-4155	Washer - Hardened	2	
106	<b>R120-5120</b>	120-5120	Spring - Compression	2	
107	<b>R3296-48</b>	119-4039, 32146-7, 3296-34, 3296-48	Locknut - 7/16-14 ESNA	2	
108	<b>R112-7451</b>	100-9429, 112-7451	Bolt - Hex Tap 3/8-16 x 2-3/4	2	
109	<b>R104-8301</b>	104-8301, 104-9301, 109-6658, 133-7570	Locknut - 3/8-16 Nylon Flanged	4	

All original equipment manufacturers names and part numbers are used for identification purposes only, and we are in no way implying that our products are original equipment parts. Prices subject to change without notice.