

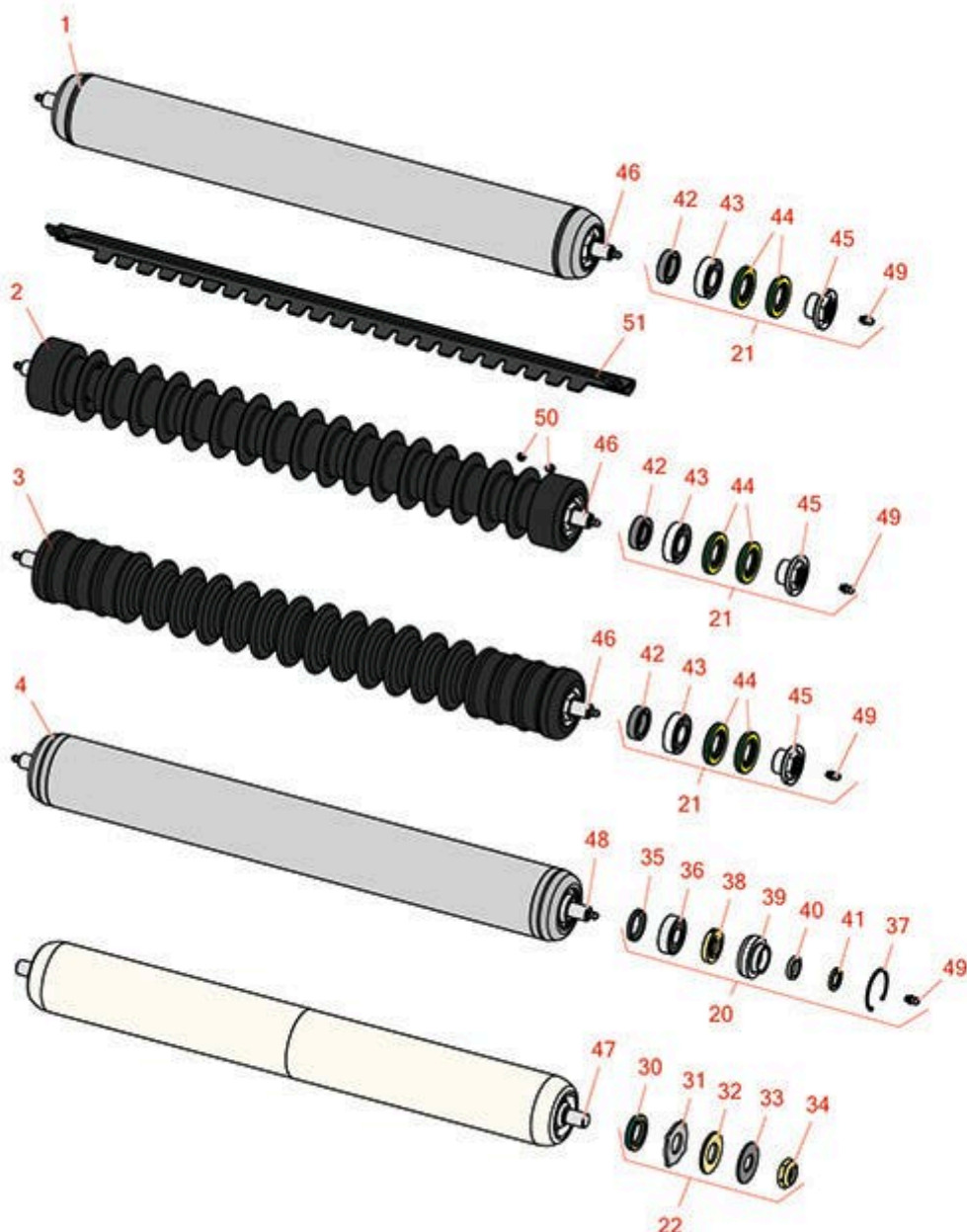


# Replaces Toro Reelmaster 5210-D Parts

DPA Cutting Unit with 5" Reel - Model 03661, 03694 &

03695

Front Rollers



All original equipment manufacturers names and part numbers are used for identification purposes only, and we are in no way implying that our products are original equipment parts. Prices subject to change without notice.



# Replaces Toro Reelmaster 5210-D Parts

DPA Cutting Unit with 5" Reel - Model 03661, 03694 & 03695

Front Rollers



Item No	R&R Part No.	OEM Part No.	Description	Qty Req	Order Quantity
---------	--------------	--------------	-------------	---------	----------------

## R&R Rollers

1	<b>R114-5412</b>	114-5412	Roller - Smooth Tubular Steel	1	
---	------------------	----------	-------------------------------	---	--

*Detail Description:* Constructed with a through shaft, this heavy-duty roller uses greasable stainless ball bearings. (2008 & Up):

2	<b>R1503911</b>	110-4050, 114-5400, 114-5421	Roller - Fusion Grooved UHMW Polyethylene	1	
---	-----------------	------------------------------------	---	---	--

*Detail Description:* Fusion Rollers combine the best features of our UHMW plastic rollers with a heavy-duty internal bearing system. Machined from solid UHMW plastic that prevents build-up of debris. This roller has a patented deep groove design and turns on precision stainless ball bearings and double seals for added life. (2006 & Up):

3	<b>R1503915</b>	110-9608, 114-5421	Roller - Fusion Grooved UHMW Polyethylene Shoulder	1	
---	-----------------	-----------------------	--	---	--

*Detail Description:* Fusion Rollers combine the best features of our UHMW plastic rollers with a heavy duty internal bearing system. Machined from solid UHMW plastic that prevents build-up of debris. This roller has a patented deep groove design in the center along with shallow grooves on each end to reduce marking in wet conditions and turns on precision stainless ball bearings and double seals for added life.:

4	<b>R110-9605</b>	110-9605	Roller - Smooth Tubular Steel	1	
---	------------------	----------	-------------------------------	---	--

*Detail Description:* Constructed with a through shaft, this heavy-duty roller uses greasable ball bearings. (2006 - 2007):

## Overhaul Kits

20	<b>R106-9606</b>	106-9606	Overhaul Kit - Roller	1	
----	------------------	----------	-----------------------	---	--

*Detail Description:* Include 2 ea: R343667 Bearings, R253-70 Seals, R32120-62 Retaining Rings, R93-1251 Seals, R93-1252 Seals, R93-2931 Washers, R93-3007 Seals:

21	<b>R114-5430</b>	114-5430	Overhaul Kit - Roller	1	
----	------------------	----------	-----------------------	---	--

*Detail Description:* Includes 4 ea.: R112-7494 Seals; 2 ea.: R302-5 Grease Zerks, R114-3717 Seals, R112-5290 Bearings & R114-3745 Locknuts:

22	<b>R101399</b>		Overhaul Kit - UHMW 2 Pc Roller	1	
----	----------------	--	---------------------------------	---	--

All original equipment manufacturers names and part numbers are used for identification purposes only, and we are in no way implying that our products are original equipment parts. Prices subject to change without notice.



# Replaces Toro Reelmaster 5210-D Parts

DPA Cutting Unit with 5" Reel - Model 03661, 03694 & 03695  
Front Rollers



Item No	R&R Part No.	OEM Part No.	Description	Qty Req	Order Quantity
---------	--------------	--------------	-------------	---------	----------------

*Detail Description: Fits all R&R 2-1/2" - 3-1/2" Dia. Black UHMW Plastic Rollers that do not use ball bearings.. Includes 2 ea.: R1503230 Star Washers, R1503470 Seals, R150333 Thrust Washers, R3296-15 Locknuts, R1503471 Bronze Thrust Washers:*

23	<b>R110-9600</b>	110-9600	High HOC Kit	1	
----	------------------	----------	--------------	---	--

*Detail Description: Includes 1 ea.: R120-0404, R120-0405 & 2 ea: R112-7451, R322-16, R445722 & 4 ea.: R106-9758, R104-8300, R453011, R104-8301 & 8 ea: R106-3925:*

## Other Parts Available

30	<b>R1503470</b>		Seal - Inner Wiper	2	
31	<b>R1503230</b>		Washer - Thrust Outer Keyed	2	
32	<b>R1503471</b>		Washer - Thrust SAE660 Bronze	2	
33	<b>R150333</b>		Washer - Flat Keyed Outer SS	2	
34	<b>R3296-15</b>	116-7306, 32118-5, 32127-23, 32127-47, 3296-15	Locknut - 3/4-16 Nylon Jam	2	
35	<b>R93-3007</b>	93-3007	Seal	2	
36	<b>R343667</b>	109966, 251-6, 38-7820	Bearing - Ball	2	
37	<b>R32120-62</b>	32120-62	Ring - Retaining	2	
38	<b>R93-1251</b>	93-1251	Seal	2	
39	<b>R93-1252</b>	93-1252	Seal - Outer	2	
40	<b>R253-70</b>	253-70	Seal	2	
41	<b>R93-2931</b>	93-2931	Washer - Roller Seal	2	
42	<b>R114-3717</b>	114-3717	Seal	2	

All original equipment manufacturers names and part numbers are used for identification purposes only, and we are in no way implying that our products are original equipment parts. Prices subject to change without notice.



## Replaces Toro Reelmaster 5210-D Parts

DPA Cutting Unit with 5" Reel - Model 03661, 03694 & 03695

Front Rollers



Item No	R&R Part No.	OEM Part No.	Description	Qty Req	Order Quantity
43	R112-5290	112-5290, 251--346, 251-346, 72-5430	Bearing - Stainless	2	
44	R112-7494	112-7494	Seal	4	
45	R114-3745	106-6939, 108-3151, 114-3745, 114-5411	Locknut - Bearing - Stainless	2	
46	R114-5403	114-5403	Shaft - Front Roller	1	
47	R1503923		Shaft - Front Rollers	1	
48	R110-4053	110-4053	Shaft - Front Roller	1	
49	R302-5	21-6010, 302-11, 302-37, 302-47, 302-5, 302-57, 302-58, 302-6, 31-0300, 32-9660, 60-0800, 62-3880, 92-4181	Fitting - Grease	2	
50	R300106	104-1835, 300106	Screw - Set 5/16-18 x 1/4	4	
51	R107-2993-03	107-2993-03	Scraper - Fits Toro Plastic Gr Roller Only	1	

All original equipment manufacturers names and part numbers are used for identification purposes only, and we are in no way implying that our products are original equipment parts. Prices subject to change without notice.