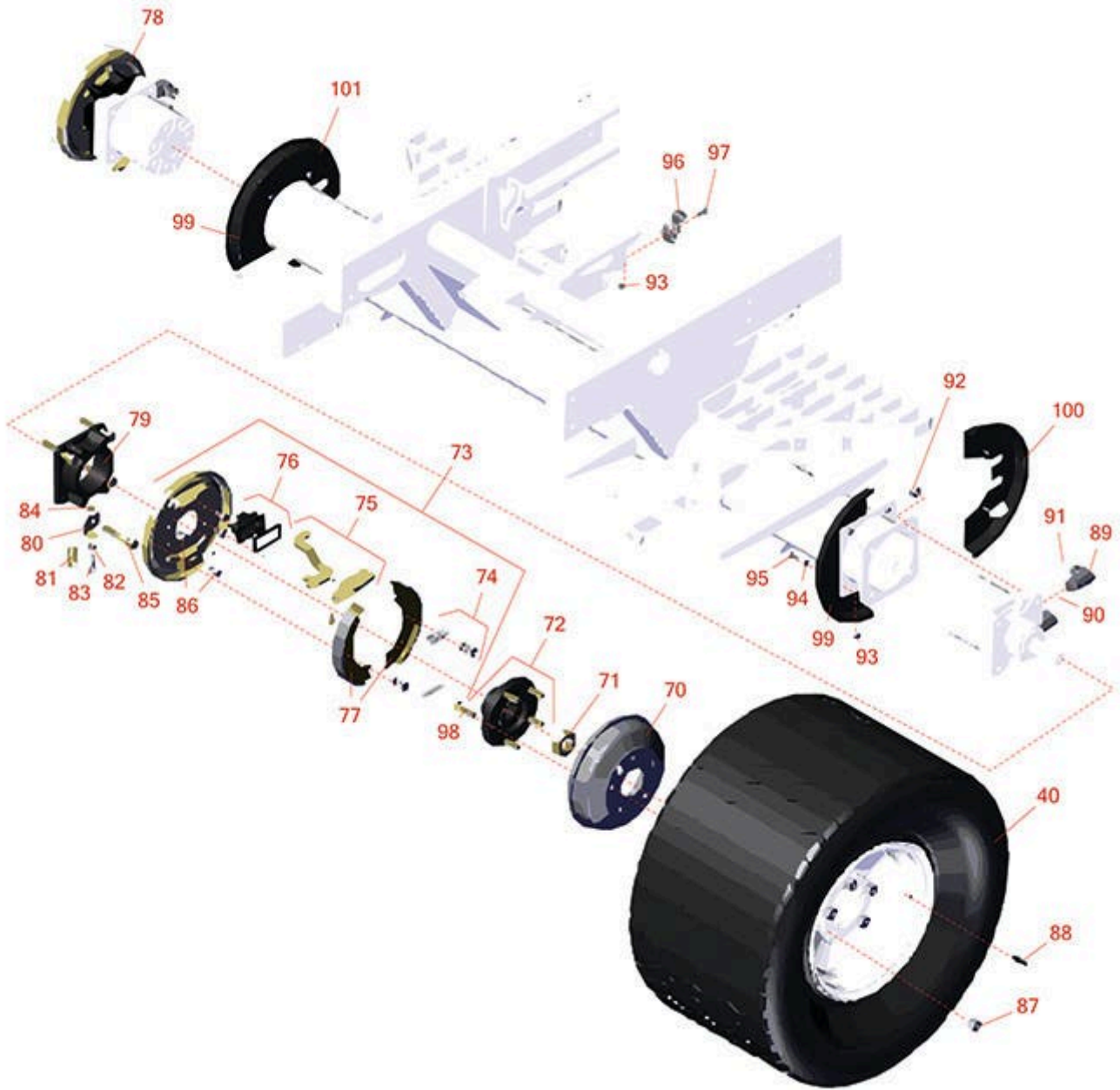




Replaces Toro Reelmaster 5010-H Parts

Traction Unit

Front Wheel, Brakes & Hydraulics



All original equipment manufacturers names and part numbers are used for identification purposes only, and we are in no way implying that our products are original equipment parts. Prices subject to change without notice.



Replaces Toro Reelmaster 5010-H Parts

Traction Unit

Front Wheel, Brakes & Hydraulics



Item No	R&R Part No.	OEM Part No.	Description	Qty Req	Order Quantity
Tires					
40	RTK2612-4LG-I	117-5196	Tire - 26.5x14.00-12 Nhs (4 Ply) K507 Turf	2	
40	RCT529386		Tire - 26.5x14.00-12 Nhs (4 Ply) Carlisle Ultra Trac	2	
Other Parts Available					
70	R114-8864	114-8864	Drum - Brake	2	
71	R117-3290	117-3290	Nut - Hex	2	
72	R121-5631	121-5621, 121-5631	Hub Assy	2	
73	R120-6261	120-6261	Brake Assy - LH	1	
74	R108-6983	108-6983	Brake Hardware Kit	2	
75	R110-8910	110-8910	Actuator Kit - LH	1	
75	R110-8884	110-8884	Actuator Kit - RH	1	
76	R110-8885	110-8885	Dust Boot Kit - Brake	2	
77	R108-6981	108-6981	Brake Shoe Kit - Set/2	2	
78	R120-6260	120-6260	Brake Assy - RH	1	
79	R120-6253-03	120-6253-03	Adapter-Brake	2	
80	R120-6267	120-6267	Clip - Spring - LH	1	
80	R120-6266	120-6266	Clip - Spring - RH	1	
81	R87-4020	87-4020	Spring - Extension	2	
82	RP457-2	01-191-0518, 22-12-AJK, 3218-2, 513299, P457-2	Nut - Jam 5/16-18 Zinc	2	

All original equipment manufacturers names and part numbers are used for identification purposes only, and we are in no way implying that our products are original equipment parts. Prices subject to change without notice.



Replaces Toro Reelmaster 5010-H Parts

Traction Unit

Front Wheel, Brakes & Hydraulics



Item No	R&R Part No.	OEM Part No.	Description	Qty Req	Order Quantity
83	R322-7	01-150-0750, 01-150-0760, 01-178-0512, 20-28-AD, 20-28-AGD, 322-7, 3223-4	Bolt - Hex HD 5/16-18 x 1-1/2	2	
84	R104-8300	104-8300, 104-8300 , 119-4041	Locknut - 5/16-18 Flanged Y/Zinc	2	
85	R325-12	01-150-0320, 01-150-0880, 01-178-0824, 20-93-AD, 325-12	Bolt - Hx HD	8	
86	R400258	01-150-0800, 01-178-0600, 01-178-0606, 20-45-AD, 31-0200, 31-9910, 3224-1, 323-4, 400258	Bolt - Hex HD 3/8-16 x 3/4	8	
87	R242-50	242-50	Nut - 1/2-20 Wheel	10	
88	R232-27	232-27, 232-31	Stem - Valve w/ Cap	2	
89	R340-17	340-17	No 10 Male Orfs x No 10 Male Orb	4	
90	R237-80	237-80, 327-80	O-Ring	4	
91	R237-65	237-65, 237.65	O-Ring	4	
92	RF5003	32127-29, 32131-5, 32132-5, 3296-23	Locknut - ESNA 1/2-13	8	

All original equipment manufacturers names and part numbers are used for identification purposes only, and we are in no way implying that our products are original equipment parts. Prices subject to change without notice.



Replaces Toro Reelmaster 5010-H Parts

Traction Unit

Front Wheel, Brakes & Hydraulics



Item No	R&R Part No.	OEM Part No.	Description	Qty Req	Order Quantity
93	R301504	2296-42, 301504, 32127-24, 32128-33, 32146-17, 3296-16, 3296-42, 3296-42 , 915661P	Locknut - ESNA 1/4-20	10	
94	R453009	01-166-0400, 24-10-BD, 24-9-AD, 32-9650, 3256-2, 3256-23, 3256-3, 3256-67, 3290-217, 3556-3, 4-2390, 7-0152	Washer - Flat 5/16 SAE	8	
95	R321-4	01-150-1030, 01-178-0406, 20-3-AGD, 321-4, 3222-1	Bolt - Hex HD 1/4-20 x 3/4	8	
96	R2412-134	2412-134	R-Clamp	4	
97	R3234-4	3234-4	Bolt - Hx Ser Was HD 1/4-20 x 3/4	2	
98	R114-3918	1-633926, 114-3918	Stud - Wheel	10	
99	R110-0950	110-0950	Shield - Brake - Front	2	
100	R110-0951	110-0951	Shiel D- Wheel - Rear LH	1	
101	R110-8878	110-8878	Shield-Wheel - Rear RH	1	

All original equipment manufacturers names and part numbers are used for identification purposes only, and we are in no way implying that our products are original equipment parts. Prices subject to change without notice.