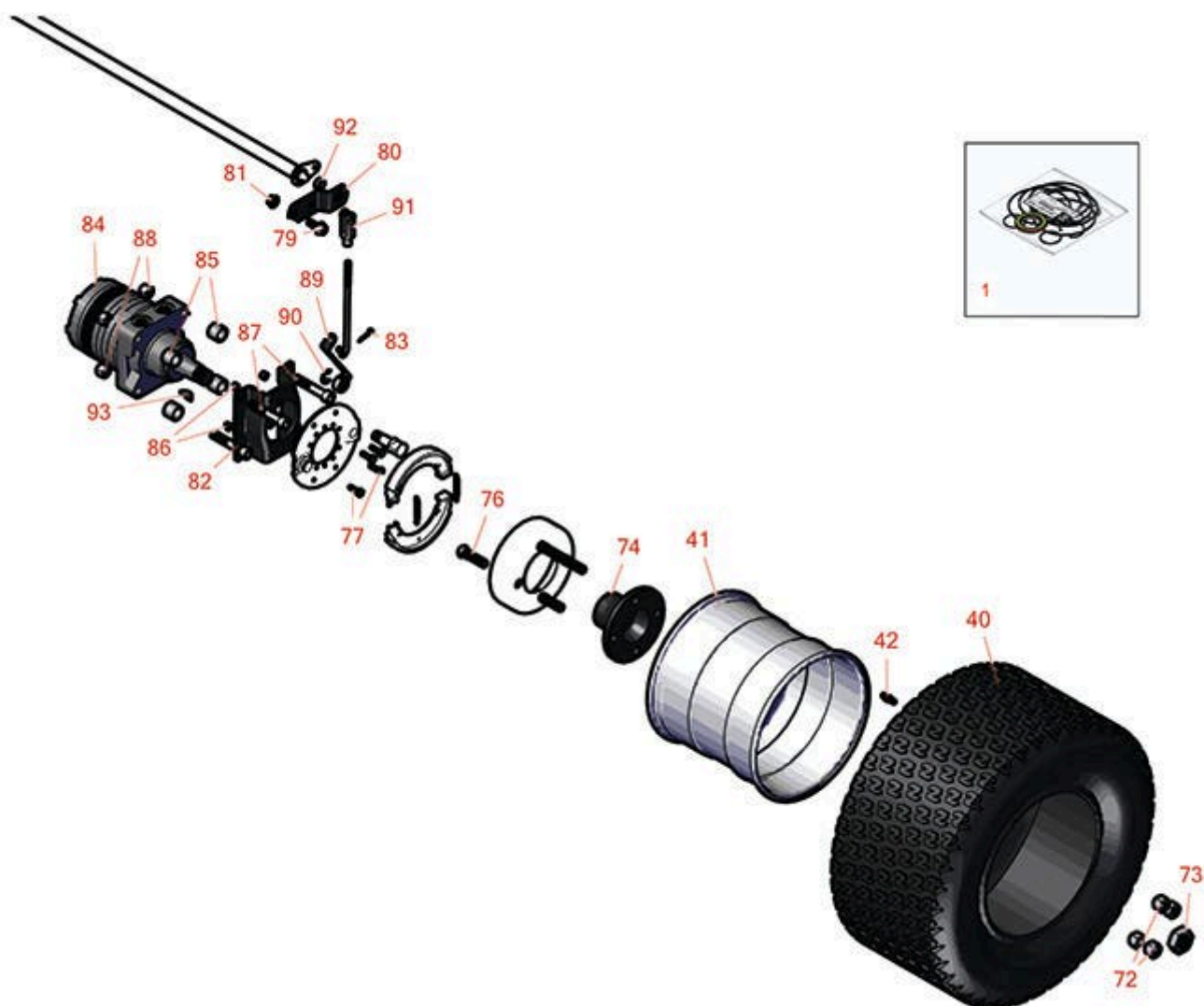




# Replaces Toro Reelmaster 3555-D Parts

Traction Unit  
Front Wheel



All original equipment manufacturers names and part numbers are used for identification purposes only, and we are in no way implying that our products are original equipment parts. Prices subject to change without notice.



# Replaces Toro Reelmaster 3555-D Parts

Traction Unit  
Front Wheel



| Item No | R&R Part No. | OEM Part No. | Description | Qty Req | Order Quantity |
|---------|--------------|--------------|-------------|---------|----------------|
|---------|--------------|--------------|-------------|---------|----------------|

## Overhaul Kits

|   |                 |                                  |                            |   |  |
|---|-----------------|----------------------------------|----------------------------|---|--|
| 1 | <b>R76-0800</b> | 100-6131,<br>76-0800,<br>94-8178 | Seal Kit - Hyd Wheel Motor | 1 |  |
|---|-----------------|----------------------------------|----------------------------|---|--|

## Tires

|    |                  |                       |  |   |  |
|----|------------------|-----------------------|--|---|--|
| 0  | <b>TIRES</b>     |                       | <a href="#">Click Here to View Complete Tire Selection</a> | 0 |  |
| 40 | <b>RCT575315</b> | 117-5125,<br>121-7924 | Tire - 20x12.00-10 Nhs (4 Ply)<br>Carlisle Turf Trac R/S   | 2 |  |

*Detail Description: The Turf Trac R/S tire offers all-around best performance in our residential product line. Applications include grounds care equipment, zero turn mowers and utility vehicles.:*

|    |                |                   |                     |   |  |
|----|----------------|-------------------|---------------------|---|--|
| 42 | <b>R232-27</b> | 232-27,<br>232-31 | Stem - Valve w/ Cap | 2 |  |
|----|----------------|-------------------|---------------------|---|--|

## Other Parts Available

|    |                    |   |                                |   |  |
|----|--------------------|---|--------------------------------|---|--|
| 72 | <b>R242-50</b>     | 242-50  | Nut - 1/2-20 Wheel             | 8 |  |
| 73 | <b>R26-3790</b>    | 26-3790   | Nut - Hex - Wheel Motor 1-20   | 2 |  |
| 74 | <b>R93-6838-03</b> | 17-4710-03,<br>93-6838,<br>93-6838-03           | Hub-Wheel                      | 2 |  |
| 76 | <b>R85-6540</b>    | 85-6540   | Stud - Drive 1/2-20 x 2        | 8 |  |
| 77 | <b>R321-5</b>      | 321-31,<br>321-5                                | Bolt - Hex HD 1/4-20 x 7/8     | 8 |  |
| 79 | <b>R3234-11</b>    | 3234-11   | Bolt - Hex Washer HD           | 4 |  |
| 80 | <b>R95-8683</b>    | 95-8683   | Bracket - Pivot                | 2 |  |
| 81 | <b>R104-8301</b>   | 104-8301,<br>104-9301,<br>109-6658,<br>133-7570 | Locknut - 3/8-16 Nylon Flanged | 1 |  |

All original equipment manufacturers names and part numbers are used for identification purposes only, and we are in no way implying that our products are original equipment parts. Prices subject to change without notice.



# Replaces Toro Reelmaster 3555-D Parts

Traction Unit  
Front Wheel



| Item No | R&R Part No.       | OEM Part No.   | Description                | Qty Req | Order Quantity |
|---------|--------------------|--|----------------------------|---------|----------------|
| 82      | <b>R84-2000-03</b> | 84-2000,<br>84-2000-03,<br>84-2000-0P  | Bracket - Brake            | 2       |                |
| 83      | <b>R3272-10</b>    | 01-151-0120,<br>105-7512,<br>3272-10,<br>N/A   | Pin - Cotter 1/8 x 3/4     | 2       |                |
| 84      | <b>R110-8785</b>   | 110-8785   | Hydraulic Motor - LH Wheel | 1       |                |
| 84      | <b>R110-8786</b>   | 110-8786,<br>95-8693   | Hydraulic Motor - RH Wheel | 1       |                |
| 85      | <b>R119-8238</b>   | 119-8238   | Spacer - Deck Pulley       | 8       |                |
| 86      | <b>R301504</b>     | 2296-42,<br>301504,<br>32127-24,<br>32128-33,<br>32146-17,<br>3296-16,<br>3296-42,<br>3296-42 ,<br>915661P | Locknut - ESNA 1/4-20      | 8       |                |
| 87      | <b>R3274-93</b>    | 3274-74,<br>3274-93  | Bolt - Soc HD Cap          | 4       |                |
| 88      | <b>RF5003</b>      | 32127-29,<br>32131-5,<br>32132-5,<br>3296-23   | Locknut - ESNA 1/2-13      | 4       |                |
| 89      | <b>R93-6850</b>    | 114-2726,<br>127-8567,<br>93-6850  | Lever - Brake              | 1       |                |
| 90      | <b>R150513</b>     | 104-7706,<br>127-8566  | E - Clip - Brake Assy      | 1       |                |
| 91      | <b>R282-2</b>      | 1-303105,<br>282-2   | Yoke                       | 2       |                |

All original equipment manufacturers names and part numbers are used for identification purposes only, and we are in no way implying that our products are original equipment parts. Prices subject to change without notice.



## Replaces Toro Reelmaster 3555-D Parts

*Traction Unit  
Front Wheel*



| Item No | R&R Part No.    | OEM Part No.        | Description             | Qty Req | Order Quantity |
|---------|-----------------|---------------------|-------------------------|---------|----------------|
| 92      | <b>R256-156</b> | 256-156,<br>256-219 | Bushing - Flanged       | 2       |                |
| 93      | <b>R3257-42</b> | 3257-42             | Key - Woodruff 5/16 x 1 | 1       |                |

All original equipment manufacturers names and part numbers are used for identification purposes only, and we are in no way implying that our products are original equipment parts. Prices subject to change without notice.