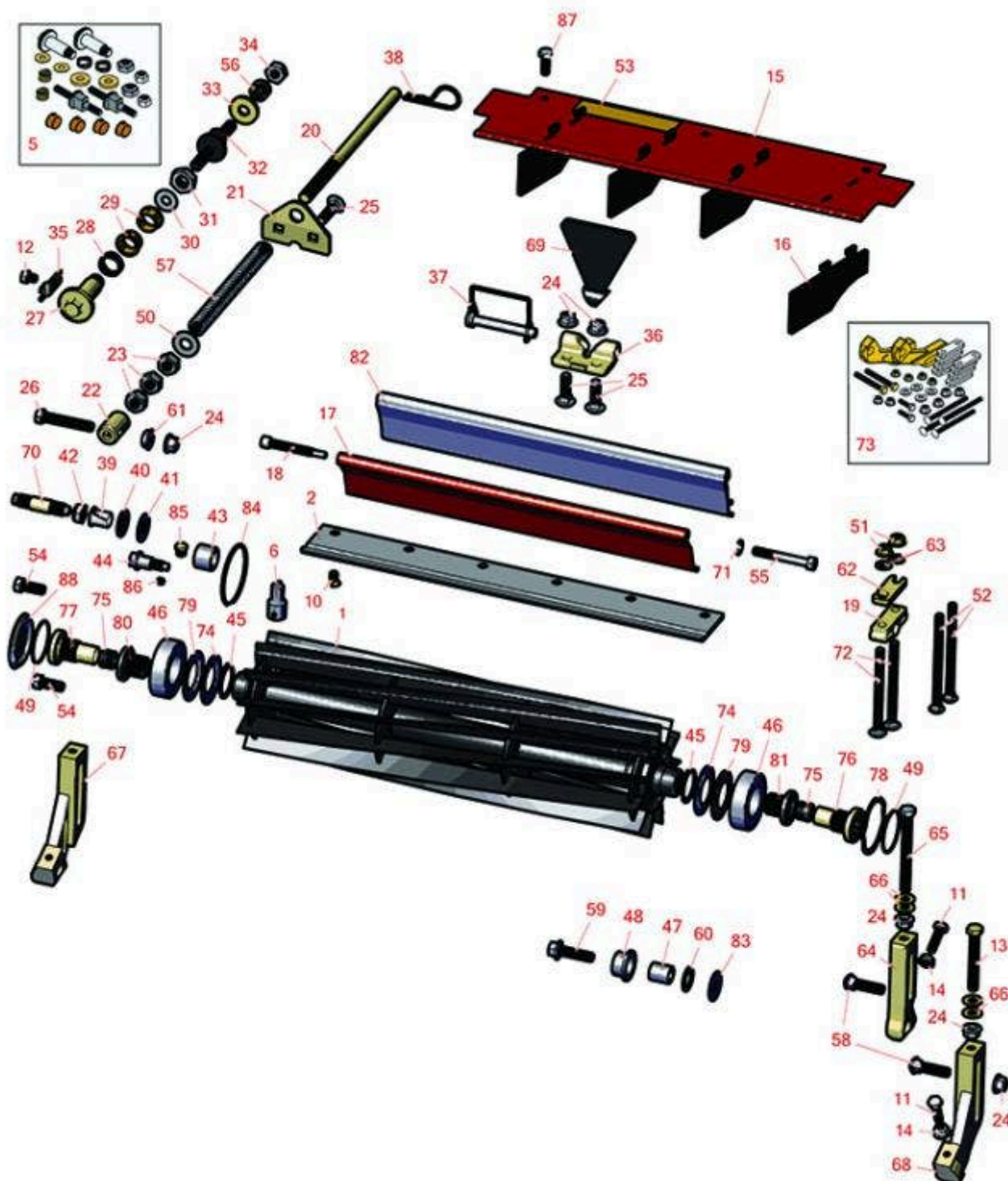




## Replaces Toro Reelmaster 3550-D Parts

18in Cutting Unit - Model 03480, 03481, 03485, 03486,  
03911 & 03912  
Reel & Bedknife



All original equipment manufacturers names and part numbers are used for identification purposes only, and we are in no way implying that our products are original equipment parts. Prices subject to change without notice.



## Replaces Toro Reelmaster 3550-D Parts

18in Cutting Unit - Model 03480, 03481, 03485, 03486,  
03911 & 03912  
Reel & Bedknife



Item No	R&R Part No.	OEM Part No.	Description	Qty Req	Order Quantity
---------	--------------	--------------	-------------	---------	----------------

### R&R Reels, Lifetime Guaranteed

1	<b>R131-3201</b>	119-9150, 127-2053, 131-3201	Reel - 8 Blade Radial 18x5	1	
---	------------------	------------------------------------	----------------------------	---	--

*Detail Description:* R&R Reel blades are expertly crafted from premium high carbon-boron alloy steel, heat-treated to perfectly complement both R&R and OEM bedknives. Each reel undergoes precision cylindrical grinding on bearing surfaces, followed by relief grinding for optimal performance. Advanced computer balancing ensures extended reel and bearing life. Backed by our lifetime guarantee against defects in materials and craftsmanship under normal use, R&R Reels deliver unmatched durability and cutting precision you can trust.:

1	<b>R133-0109</b>	133-0109	Reel - 8 Blade Razor Series Radial 18x5	1	
---	------------------	----------	--	---	--

*Detail Description:* R&R Razor Reels are manufactured from a special high alloy steel and then hardened to RC48-51 to match the temper of our Razor bedknives and original equipment premium series bedknives. All R&R Reels are cylindrically ground on bearing surfaces, relief ground and precision computer balanced for extended bearing and reel life. R&R Products Reels are guaranteed against defects in material and workmanship for the life of the reel under normal use. You can expect up to double the life from Razor reels over standard reels.:

1	<b>R137-8406</b>	137-8406	Reel - 8 Blade Razor Series Radial (RR) w/Bearings and Seals 18x5	1	
---	------------------	----------	---	---	--

*Detail Description:* R&R Razor Reels are manufactured from a special high alloy steel and then hardened to RC48-51 to match the temper of our Razor bedknives and original equipment premium series bedknives. All R&R Reels are cylindrically ground on bearing surfaces, relief ground and precision computer balanced for extended bearing and reel life. R&R Products Reels are guaranteed against defects in material and workmanship for the life of the reel under normal use. You can expect up to double the life from Razor reels over standard reels.:

1	<b>R131-3202</b>	119-9154, 131-3202	Reel - 11 Blade Radial 18x5	1	
---	------------------	-----------------------	-----------------------------	---	--

*Detail Description:* R&R Reel blades are expertly crafted from premium high carbon-boron alloy steel, heat-treated to perfectly complement both R&R and OEM bedknives. Each reel undergoes precision cylindrical grinding on bearing surfaces, followed by relief grinding for optimal performance. Advanced computer balancing ensures extended reel and bearing life. Backed by our lifetime guarantee against defects in materials and craftsmanship under normal use, R&R Reels deliver unmatched durability and cutting precision you can trust.:

All original equipment manufacturers names and part numbers are used for identification purposes only, and we are in no way implying that our products are original equipment parts. Prices subject to change without notice.



## Replaces Toro Reelmaster 3550-D Parts

18in Cutting Unit - Model 03480, 03481, 03485, 03486,  
03911 & 03912  
Reel & Bedknife



Item No	R&R Part No.	OEM Part No.	Description	Qty Req	Order Quantity
1	<b>R133-0112</b>	133-0112	Reel - 11 Blade Razor Series Forward Swept 18x5	1	
<i>Detail Description: R&amp;R Razor Reels are manufactured from a special high alloy steel and then hardened to RC48-51 to match the temper of our Razor bedknives and original equipment premium series bedknives. All R&amp;R Reels are cylindrically ground on bearing surfaces, relief ground and precision computer balanced for extended bearing and reel life. R&amp;R Products Reels are guaranteed against defects in material and workmanship for the life of the reel under normal use. You can expect up to double the life from Razor reels over standard reels.:</i>					
1	<b>R137-8407</b>	137-8407	Reel - 11 Blade Razor Series Forward Swept (Fsr) w/Bearings and Seals 18x5	1	
<i>Detail Description: R&amp;R Razor Reels are manufactured from a special high alloy steel and then hardened to RC48-51 to match the temper of our Razor bedknives and original equipment premium series bedknives. All R&amp;R Reels are cylindrically ground on bearing surfaces, relief ground and precision computer balanced for extended bearing and reel life. R&amp;R Products Reels are guaranteed against defects in material and workmanship for the life of the reel under normal use. You can expect up to double the life from Razor reels over standard reels.:</i>					
1	<b>R137-8409</b>	137-8409	Reel - 11 Blade Radial (RR) with Bearings and Seals 18x5	1	
<i>Detail Description: R&amp;R Razor Reels are manufactured from a special high alloy steel and then hardened to RC48-51 to match the temper of our Razor bedknives and original equipment premium series bedknives. All R&amp;R Reels are cylindrically ground on bearing surfaces, relief ground and precision computer balanced for extended bearing and reel life. R&amp;R Products Reels are guaranteed against defects in material and workmanship for the life of the reel under normal use. You can expect up to double the life from Razor reels over standard reels.:</i>					
<b>R&amp;R Bedknives, Lifetime Guaranteed</b>					
2	<b>R121-3167</b>	121-3167	Bedknife - 6 Hole 18" Low Cut	1	
<i>Detail Description: R&amp;R Bedknives are manufactured from high carbon-boron alloy steel and then hardened to RC46-49 to match the temper of our reel blades and original equipment reels. Bedknives are surface ground on the top and front edge and straightened three times before being packaged with oil for rust prevention. All R&amp;R Bedknives now have an increased front edge grind for added life. All R&amp;R Bedknives are guaranteed against defects in material and workmanship under normal use for the life of the part.:</i>					
2	<b>R121-3166</b>	121-3166	Bedknife - 6 Hole 18" Std (Fairway)	1	

All original equipment manufacturers names and part numbers are used for identification purposes only, and we are in no way implying that our products are original equipment parts. Prices subject to change without notice.



## Replaces Toro Reelmaster 3550-D Parts

18in Cutting Unit - Model 03480, 03481, 03485, 03486,  
03911 & 03912  
Reel & Bedknife



Item No	R&R Part No.	OEM Part No.	Description	Qty Req	Order Quantity
---------	--------------	--------------	-------------	---------	----------------

*Detail Description: R&R Bedknives are manufactured from high carbon-boron alloy steel and then hardened to RC46-49 to match the temper of our reel blades and original equipment reels. Bedknives are surface ground on the top and front edge and straightened three times before being packaged with oil for rust prevention. All R&R Bedknives now have an increased front edge grind for added life. All R&R Bedknives are guaranteed against defects in material and workmanship under normal use for the life of the part.:*

### R&R Razor Tool Steel Bedknives, Lifetime Guaranteed

2	<b>R125-2770</b>	125-2770	Bedknife - Razor Tool Steel - 18 Low Cut	1
---	------------------	----------	--	---

*Detail Description: R&R Razor bedknives are manufactured from premium alloy tool steel steel and then hardened to RC48-51 to match the temper of our Razor reel blades and original equipment premium series reels. Bedknives are surface ground on the top and front edge and specially packaged for rust prevention. All R&R Bedknives now have an increased front edge grind for added life. All R&R Bedknives are guaranteed against defects in material and workmanship under normal use for the life of the part. You can expect up to double the life over standard bedknives.:*

2	<b>R121-3165</b>	121-3165	Bedknife - Razor Tool Steel - 18 Fairway	1
---	------------------	----------	--	---

*Detail Description: R&R Razor bedknives are manufactured from premium alloy tool steel steel and then hardened to RC48-51 to match the temper of our Razor reel blades and original equipment premium series reels. Bedknives are surface ground on the top and front edge and specially packaged for rust prevention. All R&R Bedknives now have an increased front edge grind for added life. All R&R Bedknives are guaranteed against defects in material and workmanship under normal use for the life of the part. You can expect up to double the life over standard bedknives.:*

### Overhaul Kits & Service Tools

5	<b>R120-7230</b>	120-7230	Overhaul Kit - Fits DPA Units	1
---	------------------	----------	-------------------------------	---

*Detail Description: Incl 2 ea.: R108-0015, R115-7039, R119-4155, R120-5116, R120-5118, R120-5120, R3296-33, R3296-48 & 4 ea: R106-5344:*

6	<b>R51-0880</b>	51-0880	Bedknife Screw Driver Tool	1
---	-----------------	---------	----------------------------	---

*Detail Description: Easily install and remove bed knife screws with the help of a ratchet with 3/8" drive. Tool manufactured with hardened alloy steel.:*

### Other Parts Available

All original equipment manufacturers names and part numbers are used for identification purposes only, and we are in no way implying that our products are original equipment parts. Prices subject to change without notice.



## Replaces Toro Reelmaster 3550-D Parts

18in Cutting Unit - Model 03480, 03481, 03485, 03486,  
03911 & 03912  
Reel & Bedknife



Item No	R&R Part No.	OEM Part No.	Description	Qty Req	Order Quantity
10	<b>R119-4151</b>	119-4151	Screw - Bedknife 5/16-18 x 17/32	6	
11	<b>R322-16</b>	322-16, Apr-00	Bolt - Hex HD 5/16-18 x 1-1/8	2	
12	<b>R114-9396</b>	114-9396, 119-4067	Bolt - Hex HD 5/16-18 x 3/8	2	
13	<b>R112-7451</b>	100-9429, 112-7451	Bolt - Hex Tap 3/8-16 x 2-3/4	2	
14	<b>R445722</b>	30-8980, 32128-2, 32128-20, 32128-20	Nut - Serrated Washer	2	
15	<b>R112-1738</b>	112-1738	Front Grass Shield Assy	1	
16	<b>R110-1706</b>	110-1706	Deflector	4	
17	<b>R112-1735-01</b>	112-1735-01	Rear Shield Assy	1	
<i>Tech Note: Fits Models 03911 &amp; 03912:</i>					
18	<b>R107-7773</b>	107-7773	Bolt - Soc HD Cap 5/16-18 x 2-1/2	1	
19	<b>R106-3924</b>	106-3924	Bracket - Rear Roller	2	
20	<b>R107-2970</b>	107-2970	Rod - Spring	1	
21	<b>R110-4069</b>	110-4069	Bracket	1	
22	<b>R99-8662</b>	99-8662	Tube - Spring	1	
23	<b>R443818</b>	01-191-0813, 3218-18, 3218-5	Nut - 1/2-13 Hex Jam Zinc	3	
24	<b>R104-8301</b>	104-8301, 104-9301, 109-6658, 133-7570	Locknut - 3/8-16 Nylon Flanged	11	

All original equipment manufacturers names and part numbers are used for identification purposes only, and we are in no way implying that our products are original equipment parts. Prices subject to change without notice.



## Replaces Toro Reelmaster 3550-D Parts

18in Cutting Unit - Model 03480, 03481, 03485, 03486,  
03911 & 03912  
Reel & Bedknife



Item No	R&R Part No.	OEM Part No.	Description	Qty Req	Order Quantity
25	<b>R3231-25</b>	01-173-0610, 30-9970, 3231-25, 3231-3, 900064P	Bolt - Carriage 3/8-16 x 1-1/4	4	
26	<b>R104-3396</b>	104-3396	Bolt - Hex HD 3/8-16 x 2-1/4	1	
27	<b>R120-5118</b>	120-5118	Shaft - Adjuster	2	
<i>Detail Description: 2012 &amp; Newer:</i>					
28	<b>R120-5116</b>	120-5116	Washer - Wave	2	
29	<b>R106-5344</b>	106-5344	Bushing - Flanged and Keyed	3	
30	<b>R108-0015</b>	108-0015	Washer - Flat	2	
31	<b>R3296-33</b>	3296-33	Locknut - 5/8-18 ESNA Jam	2	
32	<b>R115-7039</b>	115-7039	Screw - Adjuster - Bedbar	2	
33	<b>R119-4155</b>	119-4155	Washer - Hardened	2	
34	<b>R3296-48</b>	119-4039, 32146-7, 3296-34, 3296-48	Locknut - 7/16-14 ESNA	2	
35	<b>R99-2097</b>	99-2097	Detent - Bed Bar Adjuster	2	
36	<b>R110-4058</b>	110-4058	Bracket - Chain	1	
37	<b>R107-7400</b>	107-7400	Pin - Lynch	1	
38	<b>R92-2762</b>	92-2762	Pin - Snap	1	
39	<b>R56-9520</b>	56-9520	Bushing - Nyliner	2	
40	<b>R61-1950</b>	61-1950	Washer - Nylon - Bed Bar	2	

All original equipment manufacturers names and part numbers are used for identification purposes only, and we are in no way implying that our products are original equipment parts. Prices subject to change without notice.



## Replaces Toro Reelmaster 3550-D Parts

18in Cutting Unit - Model 03480, 03481, 03485, 03486,  
03911 & 03912  
Reel & Bedknife



Item No	R&R Part No.	OEM Part No.	Description	Qty Req	Order Quantity
41	R453017	01-166-0050, 01-166-0240, 01-166-0800, 24-13-AD, 24-14-AD, 32-8110, 3256-26, 3256-6, 453017, 69-8980, 87-7270	Washer - Flat 1/2	2	
42	R3296-28	119-4154, 140-9234, 32127-34, 32128-7, 32128-8, 32136-7, 3296-28	Nut - 1/2-20 ESNA Jam	2	
43	R106-9618	106-9618	Bushing - Rubber	2	
44	R107-2979	107-2979	Bolt - Shoulder	4	
45	R92-2601	92-2601	Snap Ring	2	
46	R115-3296	115-3296	Bearing	2	
47	R108-4279	108-4279	Spacer - Frame	2	
48	R93-2877	93-2877	Bushing - Flanged	2	
49	R237-68	237-68	O-Ring	2	
50	R87-7270-01	87-7270	Washer - Flat 1/2	1	
51	R104-8300	104-8300, 104-8300 , 119-4041	Locknut - 5/16-18 Flanged Y/Zinc	4	
52	R3230-30	3230-30	Bolt - Carriage 5/16x4 1/2	4	
53	R93-6688	93-6688	Decal - Warning	1	

All original equipment manufacturers names and part numbers are used for identification purposes only, and we are in no way implying that our products are original equipment parts. Prices subject to change without notice.



## Replaces Toro Reelmaster 3550-D Parts

18in Cutting Unit - Model 03480, 03481, 03485, 03486,  
03911 & 03912  
Reel & Bedknife



Item No	R&R Part No.	OEM Part No.	Description	Qty Req	Order Quantity
53	<b>R137-9706</b>	137-9706	Decal- Warning	1	
54	<b>R3234-11</b>	3234-11	Bolt - Hex Washer HD	4	
55	<b>R322-14</b>	01-150-0830, 01-178-0524, 30-8900, 322-14	Bolt - Hex HD 5/16-18 x 3 GR5	1	
56	<b>R120-5120</b>	120-5120	Spring - Compression	2	
57	<b>R112-1725</b>	112-1725	Spring - Compression	1	
58	<b>R3231-4</b>	01-157-0440, 01-173-0612, 3231-4	Bolt - Carriage 3/8-16 x 1-1/2	2	
59	<b>R3234-19</b>	3234-19	Bolt - Hex Washer 3/8-16x1-3/4	2	
60	<b>R67-9410</b>	67-9410	Washer - Clevis Pin	2	
61	<b>R32128-43</b>	30-8990, 32128-43, 3290-357	Nut - Flanged Whiz - 3/8-16	1	
61	<b>R3296-39</b>	32127-25, 32128-36, 3290-357, 3296-17, 3296-22, 3296-39, 915663P, 99-7443	Locknut - 3/8-16 Nylon	5	
62	<b>R119-0626</b>	119-0626	Shim - Roller - 1/4 in - Slotted	8	
63	<b>R94-6936</b>	94-6936, 94-9236	Washer - Hardened - 5/16 SAE	4	
64	<b>R125-2796</b>	125-2796	Bracket- Front HOC	2	

*Detail Description: Fits 2013 & Newer:*

All original equipment manufacturers names and part numbers are used for identification purposes only, and we are in no way implying that our products are original equipment parts. Prices subject to change without notice.



## Replaces Toro Reelmaster 3550-D Parts

18in Cutting Unit - Model 03480, 03481, 03485, 03486,  
03911 & 03912  
Reel & Bedknife



Item No	R&R Part No.	OEM Part No.	Description	Qty Req	Order Quantity
65	R107-4026	107-4026	Bolt - Hex Tap 3/8-16 x 3-3/4	2	
66	R453011	01-166-0100, 01-166-0120, 01-166-0270, 01-166-0500, 01-166-0600, 01-166-0620, 132-4593, 2356-3, 237-12, 24-10-AD, 24-11-AD, 24-11-BD, 24-12-AD, 24-12-BD, 30-9310, 32-8190, 3256-24, 3256-3, 3256-36, 3256-4, 453011, 47-9950, 48-9220, 513458, 7-0052	Washer - Flat 3/8 SAE Y/Zinc	4	
67	R120-0405	120-0405	Bracket - High HOC - RH	1	
<i>Detail Description: Fits 2011 &amp; Newer:</i>					
68	R120-0404	120-0404	Bracket- High HOC - LH	1	
<i>Detail Description: Fits 2011 &amp; Newer:</i>					
69	R110-4088-03	110-4088-03, 119-8010-03	Kickstand	1	
70	R120-9941	120-9941	Bolt- Bedbar	2	
71	R3256-74	3256-74	Washer - Flat	1	
72	R106-9758		Bolt - Carriage 5/16x4	2	

All original equipment manufacturers names and part numbers are used for identification purposes only, and we are in no way implying that our products are original equipment parts. Prices subject to change without notice.



## Replaces Toro Reelmaster 3550-D Parts

18in Cutting Unit - Model 03480, 03481, 03485, 03486,  
03911 & 03912  
Reel & Bedknife



Item No	R&R Part No.	OEM Part No.	Description	Qty Req	Order Quantity
73	<b>R110-9600</b>	110-9600	High HOC Kit	1	
<i>Detail Description: Includes 1 ea.: R120-0404, R120-0405 &amp; 2 ea: R112-7451, R322-16, R445722 &amp; 4 ea.: R106-9758, R104-8300, R453011, R104-8301 &amp; 8 ea: R106-3925:</i>					
74	<b>R121-6953</b>	121-6953	Washer - Rubber - Special	2	
74	<b>R127-4284</b>	127-4284	Washer - Special	2	
75	<b>R125-5609</b>	125-5609	Plug - Plastic	2	
76	<b>R125-2772</b>	125-2772	Insert Assy - LH	1	
77	<b>R125-2773</b>	125-2773	Insert Assy - RH	1	
78	<b>R105-5700</b>	105-5700, 115-5258	Wave Washer - Bearing	1	
79	<b>R115-3299</b>	115-3299	Seal- Flocked	2	
80	<b>R130-0063</b>	130-0063	Insert-Threaded, 5 Inch (RH)	1	
81	<b>R130-0064</b>	130-0064	Insert-Threaded, 5 Inch (LH)	1	
82	<b>R125-2099</b>	125-2099	Grass Shield - Rear	1	
<i>Tech Note: Fits Models 03480/03481/03485/03486:</i>					
83	<b>R130-8094</b>	130-8094	Washer	2	
84	<b>R117-8177</b>	117-8177	O-Ring	2	
85	<b>R170714</b>	302-34, 302-39, 62-3520	Fitting - Pressure Relief	2	
86	<b>R3245-35</b>	3245-35	Screw - Set 1/4-28 x 1/4	2	
87	<b>R3234-7</b>	3234-7	Bolt - Hex Washer HD 5/16-18 x 5/8	3	

All original equipment manufacturers names and part numbers are used for identification purposes only, and we are in no way implying that our products are original equipment parts. Prices subject to change without notice.



## Replaces Toro Reelmaster 3550-D Parts

18in Cutting Unit - Model 03480, 03481, 03485, 03486,  
03911 & 03912

Reel & Bedknife



Item No	R&R Part No.	OEM Part No.	Description	Qty Req	Order Quantity
88	R150485	2410-30	Cap - Protective Bearing Housing	1	

All original equipment manufacturers names and part numbers are used for identification purposes only, and we are in no way implying that our products are original equipment parts. Prices subject to change without notice.