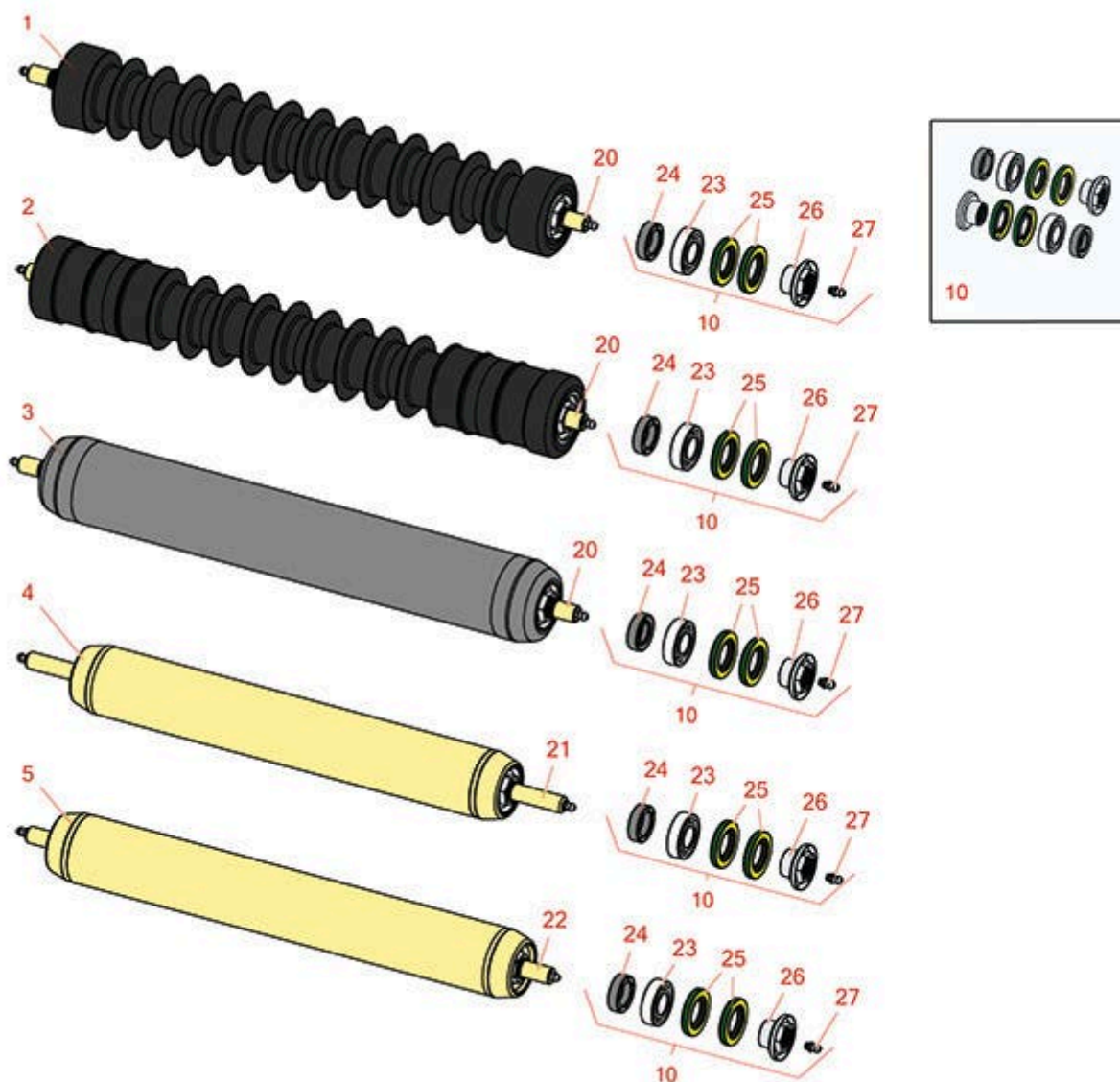




Replaces Toro Reelmaster 3550-D Parts

18in Cutting Unit - Model 03480, 03481, 03485, 03486,
03911 & 03912

Rollers



All original equipment manufacturers names and part numbers are used for identification purposes only, and we are in no way implying that our products are original equipment parts. Prices subject to change without notice.



Replaces Toro Reelmaster 3550-D Parts

18in Cutting Unit - Model 03480, 03481, 03485, 03486,
03911 & 03912
Rollers



Item No	R&R Part No.	OEM Part No.	Description	Qty Req	Order Quantity
---------	--------------	--------------	-------------	---------	----------------

R&R Rollers Available

1	R1503975	112-1704	Roller - Fusion Grooved UHMW Polyethylene	0	
---	-----------------	----------	---	---	--

Detail Description: Fusion Rollers combine the best features of our UHMW plastic rollers with a heavy-duty internal bearing system. Machined from solid UHMW plastic that prevents build-up of debris. This roller has a patented deep groove design and turns on precision stainless ball bearings and double seals for added life.:

2	R1503980	112-1733	Roller - Fusion Grooved UHMW Polyethylene Shoulder	0	
---	-----------------	----------	--	---	--

Detail Description: Fusion Rollers combine the best features of our UHMW plastic rollers with a heavy duty internal bearing system. Machined from solid UHMW plastic that prevents build-up of debris. This roller has a patented deep groove design in the center along with shallow grooves on each end to reduce marking in wet conditions and turns on precision stainless ball bearings and double seals for added life.:

3	R112-1732	112-1732	Roller - Smooth Tubular Steel	0	
---	------------------	----------	-------------------------------	---	--

Detail Description: Constructed with a through shaft, this heavy-duty roller uses greasable stainless ball bearings.:

4	R112-1708	112-1708	Roller - Smooth Tubular Steel	0	
---	------------------	----------	-------------------------------	---	--

Detail Description: Constructed with a through shaft, this heavy-duty roller uses greasable stainless ball bearings.:

5	R112-1728	112-1728	Roller - Smooth Tubular Steel - Long	0	
---	------------------	----------	--------------------------------------	---	--

Detail Description: Constructed with a through shaft, this heavy-duty roller uses greasable stainless ball bearings.:

Overhaul Kits

10	R114-5430	114-5430	Overhaul Kit - Roller	0	
----	------------------	----------	-----------------------	---	--

Detail Description: Includes 4 ea.: R112-7494 Seals; 2 ea.: R302-5 Grease Zerks, R114-3717 Seals, R112-5290 Bearings & R114-3745 Locknuts:

Other Parts Available

All original equipment manufacturers names and part numbers are used for identification purposes only, and we are in no way implying that our products are original equipment parts. Prices subject to change without notice.



Replaces Toro Reelmaster 3550-D Parts

18in Cutting Unit - Model 03480, 03481, 03485, 03486,
03911 & 03912
Rollers



Item No	R&R Part No.	OEM Part No.	Description	Qty Req	Order Quantity
20	R112-1707	112-1707	Shaft - Front Roller	1	
21	R112-1711	112-1711	Shaft - Short Rear Roller	1	
22	R112-1731	112-1731	Shaft - Long Rear Roller	1	
23	R112-5290	112-5290, 251--346, 251-346, 72-5430	Bearing - Stainless	2	
24	R114-3717	114-3717	Seal	2	
25	R112-7494	112-7494	Seal	4	
26	R114-3745	106-6939, 108-3151, 114-3745, 114-5411	Locknut - Bearing - Stainless	2	
27	R302-5	21-6010, 302-11, 302-37, 302-47, 302-5, 302-57, 302-58, 302-6, 31-0300, 32-9660, 60-0800, 62-3880, 92-4181	Fitting - Grease	2	

All original equipment manufacturers names and part numbers are used for identification purposes only, and we are in no way implying that our products are original equipment parts. Prices subject to change without notice.