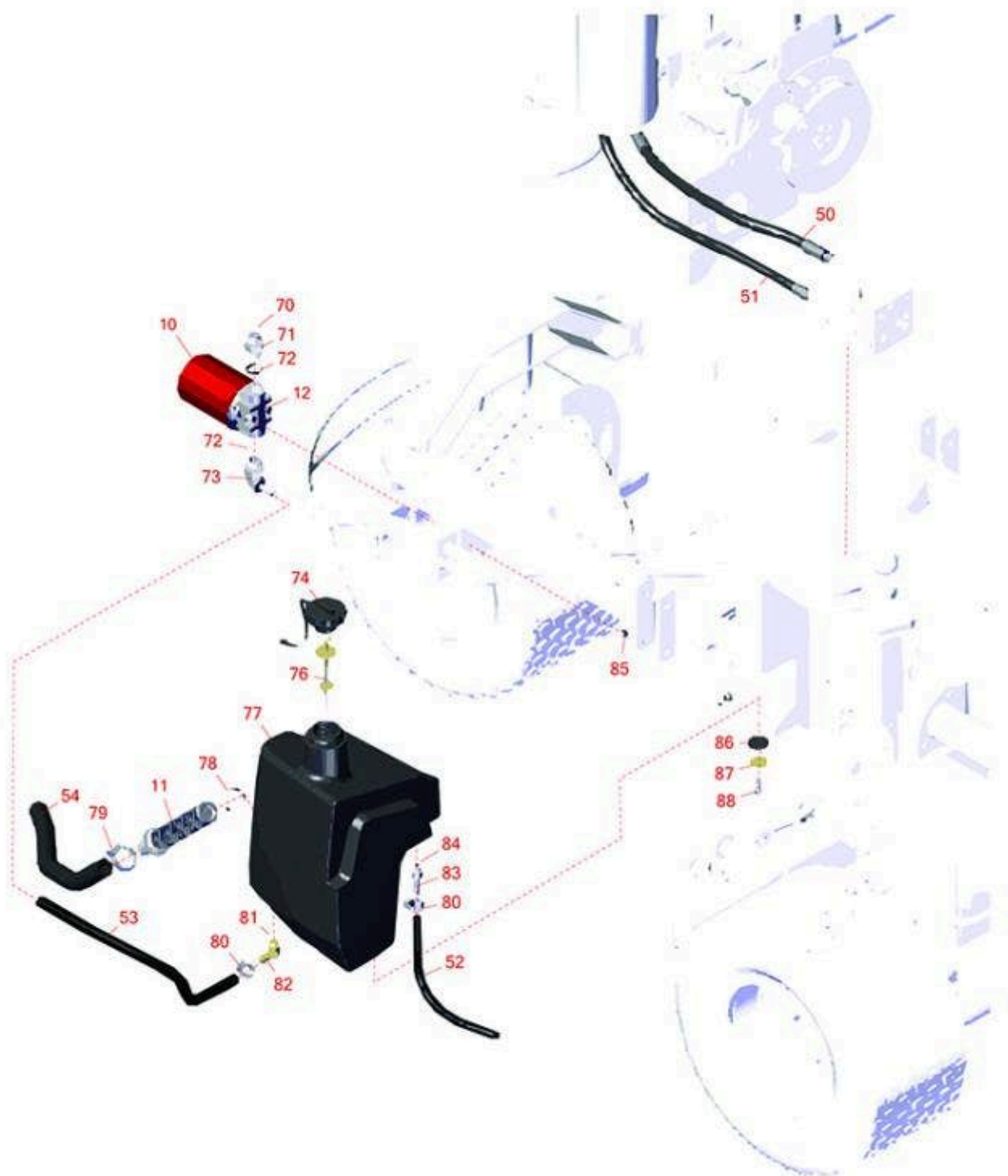




Replaces Toro Reelmaster 3100-D Parts

Traction Unit - Model 03201

Hydraulic Tank



All original equipment manufacturers names and part numbers are used for identification purposes only, and we are in no way implying that our products are original equipment parts. Prices subject to change without notice.



Replaces Toro Reelmaster 3100-D Parts

Traction Unit - Model 03201

Hydraulic Tank



| Item No | R&R Part No. | OEM Part No. | Description | Qty Req | Order Quantity |
|----------------|------------------|---|----------------------------------|---------|----------------|
| Filters | | | | | |
| 10 | R86-3010 | 23-9740, 239470, 28-1370, 281370, 353-387, 353387, 54-0110, 540110, 76-6490, 86-3010, 863010, Dec-70 | Baldwin Hydraulic Oil Filter | 1 | |
| 10 | RRF10611 | 01-317-0240, 23-9740, 54-0110 | SilverGuard Hydraulic Oil Filter | 1 | |
| 10 | RRF10610 | 23-9740, 239470, 28-1370, 281370, 353-387, 353387, 54-0110, 540110, 76-6490, 86-3010, 863010 | SilverGuard Oil Filter | 1 | |
| 11 | R104-7546 | 104-7546, 104-7546` | Strainer - Tank | 1 | |
| 12 | R150924 | | Filter Head Assy | 1 | |
| 12 | R92-5821 | 86-3000, 92-5821 | Filter - Head | 1 | |
| Hoses | | | | | |
| 50 | R95-8829 | 95-8829 | Hydraulic Hose Assy | 1 | |
| 51 | R106-4197 | 106-4197 | Hydraulic Hose Assy | 1 | |

All original equipment manufacturers names and part numbers are used for identification purposes only, and we are in no way implying that our products are original equipment parts. Prices subject to change without notice.



Replaces Toro Reelmaster 3100-D Parts

Traction Unit - Model 03201

Hydraulic Tank



| Item No | R&R Part No. | OEM Part No. | Description | Qty Req | Order Quantity |
|------------------------------|------------------|---|----------------------------|---------|----------------|
| 52 | R104-4846 | 104-4846 | Hose | 1 | |
| 53 | R99-3501 | 99-3501 | Hose | 1 | |
| 54 | R104-4845 | 104-4845 | Hose - Suction | 1 | |
| Other Parts Available | | | | | |
| 70 | R237-65 | 237-65, 237.65 | O-Ring | 1 | |
| 71 | R340-8 | 340-8 | Adapter | 1 | |
| 72 | R237-81 | 237-81, 237.81, 327-81 | O-Ring | 2 | |
| 73 | R95-8814 | 95-8814 | Fitting - Barbed 90 Deg | 1 | |
| 74 | R93-7160 | 93-3103, 93-7160 | Cap - Hyd Oil w/Tether | 1 | |
| 76 | R75-3710 | 75-3710 | Dipstick - Hyd Oil | 1 | |
| 77 | R104-4840 | 104-4840 | Tank - Hyd | 1 | |
| 78 | R340-136 | 340-136 | O-Ring | 1 | |
| 79 | R2412-34 | 2412-34, 31-0120 | Clamp - Hose .75-1.5 | 1 | |
| 80 | R2412-36 | 2210-87, 2412-36, 31-9140, 93-5818, 99-0772 | Clamp - Hose 1/2 | 3 | |
| 81 | R237-79 | 237-79 | O-Ring | 1 | |
| 82 | R354-126 | 354-126 | Hydraulic Fitting - 45 Deg | 1 | |
| 83 | R353-979 | 353-979 | Fitting - Straight | 1 | |

All original equipment manufacturers names and part numbers are used for identification purposes only, and we are in no way implying that our products are original equipment parts. Prices subject to change without notice.



Replaces Toro Reelmaster 3100-D Parts

Traction Unit - Model 03201

Hydraulic Tank



| Item No | R&R Part No. | OEM Part No. | Description | Qty Req | Order Quantity |
|---------|-----------------|---------------------------------|----------------------------|---------|----------------|
| 84 | R237-42 | 237-42, 31-4160 | O-Ring | 1 | |
| 85 | R3234-13 | 3234-13, 960151P | Bolt - Flanged Hex 1/4-20 | 2 | |
| 86 | R240-11 | 240-11 | Bushing - Rubber - Flanged | 4 | |
| 87 | R63-8410 | 53-6380, 63-4810, 63-8410 | Washer - Isolator Bushing | 4 | |
| 88 | R3234-11 | 3234-11 | Bolt - Hex Washer HD | 4 | |

All original equipment manufacturers names and part numbers are used for identification purposes only, and we are in no way implying that our products are original equipment parts. Prices subject to change without notice.