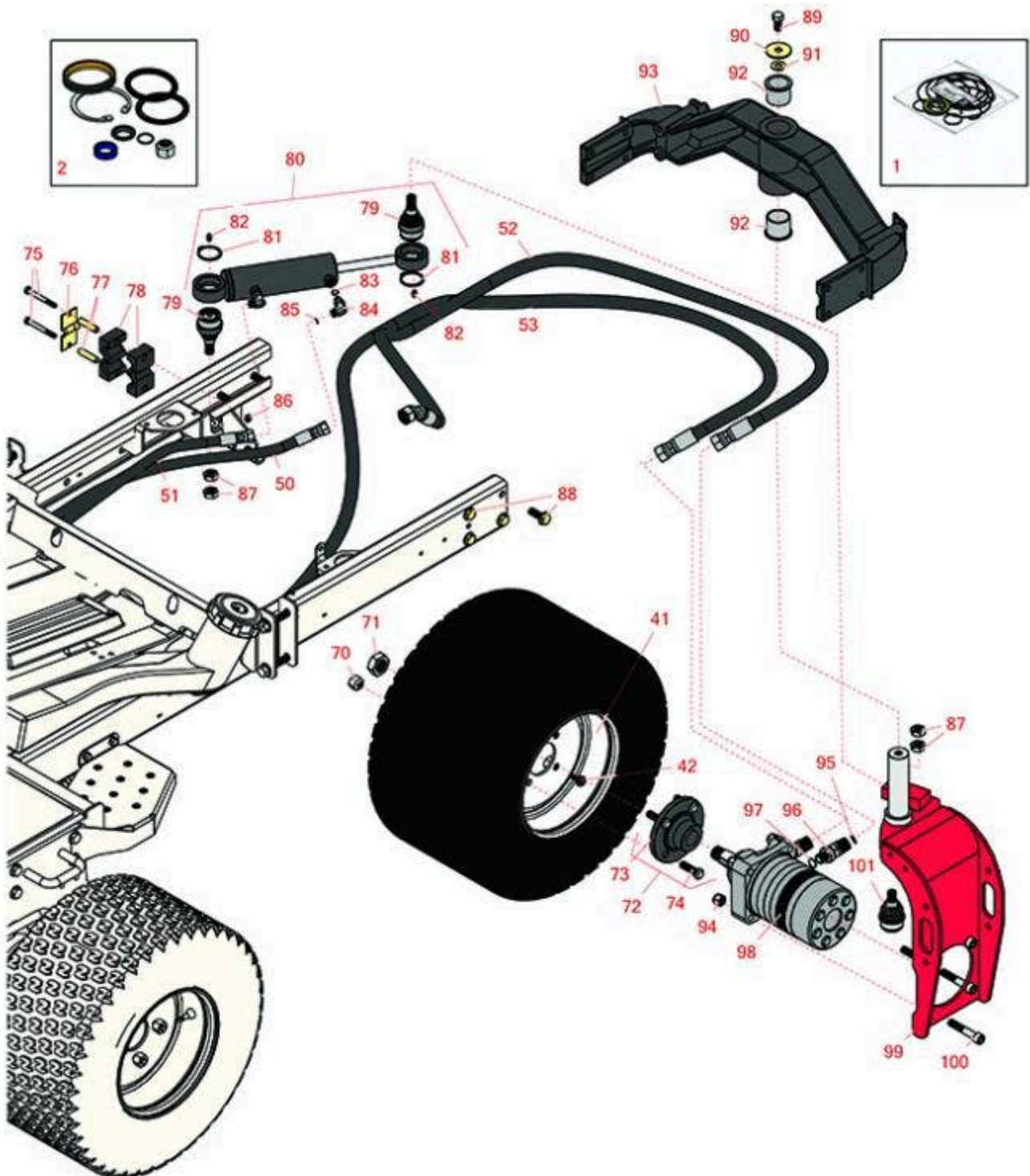




# Replaces Toro Reelmaster 3100-D Parts

Traction Unit - Model 03170

Rear Wheel



All original equipment manufacturers names and part numbers are used for identification purposes only, and we are in no way implying that our products are original equipment parts. Prices subject to change without notice.



# Replaces Toro Reelmaster 3100-D Parts

*Traction Unit - Model 03170*

*Rear Wheel*



Item No	R&R Part No.	OEM Part No.	Description	Qty Req	Order Quantity
<b>Overhaul Kits</b>					
1	<b>R76-0800</b>	100-6131, 76-0800, 94-8178	Seal Kit - Hyd Wheel Motor	1	
2	<b>R86-5390</b>	72-9680, 74-3590, 83-7240, 86-5390	Seal Kit - Hyd Cyl	1	
41	<b>R117-5129</b>	117-5129	Wheel - 10 x 7	1	
42	<b>R232-27</b>	232-27, 232-31	Stem - Valve w/ Cap	1	
<b>Hoses</b>					
50	<b>R95-8845</b>	95-8845	Hydraulic Hose Assy	1	
51	<b>R95-8844</b>	95-8844	Hydraulic Hose Assy	1	
52	<b>R105-1222</b>	105-1222	Hydraulic Hose Assy	1	
53	<b>R105-1221</b>	105-1221	Hydraulic Hose Assy	1	
<b>Other Parts Available</b>					
70	<b>R242-50</b>	242-50	Nut - 1/2-20 Wheel	4	
71	<b>R26-3790</b>	26-3790	Nut - Hex - Wheel Motor 1-20	1	
72	<b>R151377</b>	18-3209	Hub Assy w/Studs - Wheel	2	
73	<b>R10-6870-03</b>	10-6870, 10-6870-03, Oct-70	Hub - Wheel	1	
74	<b>R10-6830</b>	10-6830, 75-9440	Stud - Wheel 1/2-20 x 1 3/4	4	

All original equipment manufacturers names and part numbers are used for identification purposes only, and we are in no way implying that our products are original equipment parts. Prices subject to change without notice.



# Replaces Toro Reelmaster 3100-D Parts

*Traction Unit - Model 03170*

*Rear Wheel*



Item No	R&R Part No.	OEM Part No.	Description	Qty Req	Order Quantity
75	<b>R322-13</b>	01-150-1680, 01-178-0522, 322-13, 3223-9	Screw - Hxx HD	2	
76	<b>R93-7961</b>	93-7961	Clamp - Case Drain	1	
77	<b>R93-7960</b>	93-7960	Spacer	2	
78	<b>R82-8170</b>	82-8170	Clamp	2	
79	<b>R106-6774</b>	106-6774, 92-5838, 92-5838-01	Ball Joint	2	
80	<b>R94-8141</b>	94-8141	Hydraulic Cylinder	1	
81	<b>R32151-104</b>	32151-104	Ring - Retaining, Ex	2	
82	<b>R302-5</b>	21-6010, 302-11, 302-37, 302-47, 302-5, 302-57, 302-58, 302-6, 31-0300, 32-9660, 60-0800, 62-3880, 92-4181	Fitting - Grease	3	
83	<b>R237-22</b>	107-8844, 237-22, 237-78	O-Ring	2	
84	<b>R340-132</b>	340-132	Hydraulic Fitting - 90 Deg	2	
85	<b>R237-21</b>	237-21, 327-21	O-Ring	2	

All original equipment manufacturers names and part numbers are used for identification purposes only, and we are in no way implying that our products are original equipment parts. Prices subject to change without notice.



# Replaces Toro Reelmaster 3100-D Parts

*Traction Unit - Model 03170*

*Rear Wheel*



Item No	R&R Part No.	OEM Part No.	Description	Qty Req	Order Quantity
86	<b>R3296-29</b>	1-804256, 3290-357, 3296-29, 915662P	Locknut - 5/16-18 ESNA	4	
87	<b>R443828</b>	01-191-1018, 3214, 3220-6, 443828, 915089P	Nut - 5/8-18 Hex	4	
88	<b>R3234-38</b>	3234-38	Bolt - Flanged Hex 1/2-13 x 1-1/4	8	
89	<b>R325-3</b>	325-3	Screw Hex HD	1	
90	<b>R75-7730</b>	75-7730	Washer - Thrust	1	
91	<b>R3255-2</b>	3255-2	Washer - Lock - Ext	1	
92	<b>R95-8805</b>	95-8805	Bushing - Flanged 1 1/2 in ID	2	
93	<b>R107-7828</b>	107-7828, 107-7828-03, 18-3979-03	Rear Frame Casting Assy	1	
94	<b>RF5003</b>	32127-29, 32131-5, 32132-5, 3296-23	Locknut - ESNA 1/2-13	4	
95	<b>R237-65</b>	237-65, 237.65	O-Ring	2	
96	<b>R340-14</b>	340-14, 96-0861	Hydraulic Fitting - 45 Deg	2	
97	<b>R237-80</b>	237-80, 327-80	O-Ring	2	
98	<b>R95-8694</b>	95-8694	Hydraulic Motor Assy - Rear	1	
99	<b>R95-8905-01</b>	95-8905, 95-8905-01	Fork-Rear	1	

All original equipment manufacturers names and part numbers are used for identification purposes only, and we are in no way implying that our products are original equipment parts. Prices subject to change without notice.



# Replaces Toro Reelmaster 3100-D Parts

*Traction Unit - Model 03170*

*Rear Wheel*



Item No	R&R Part No.	OEM Part No.	Description	Qty Req	Order Quantity
100	<b>R3274-93</b>	3274-74, 3274-93	Bolt - Soc HD Cap	4	
101	<b>R121-3605</b>	121-3605, R121-3605	Ball Joint	2	

All original equipment manufacturers names and part numbers are used for identification purposes only, and we are in no way implying that our products are original equipment parts. Prices subject to change without notice.