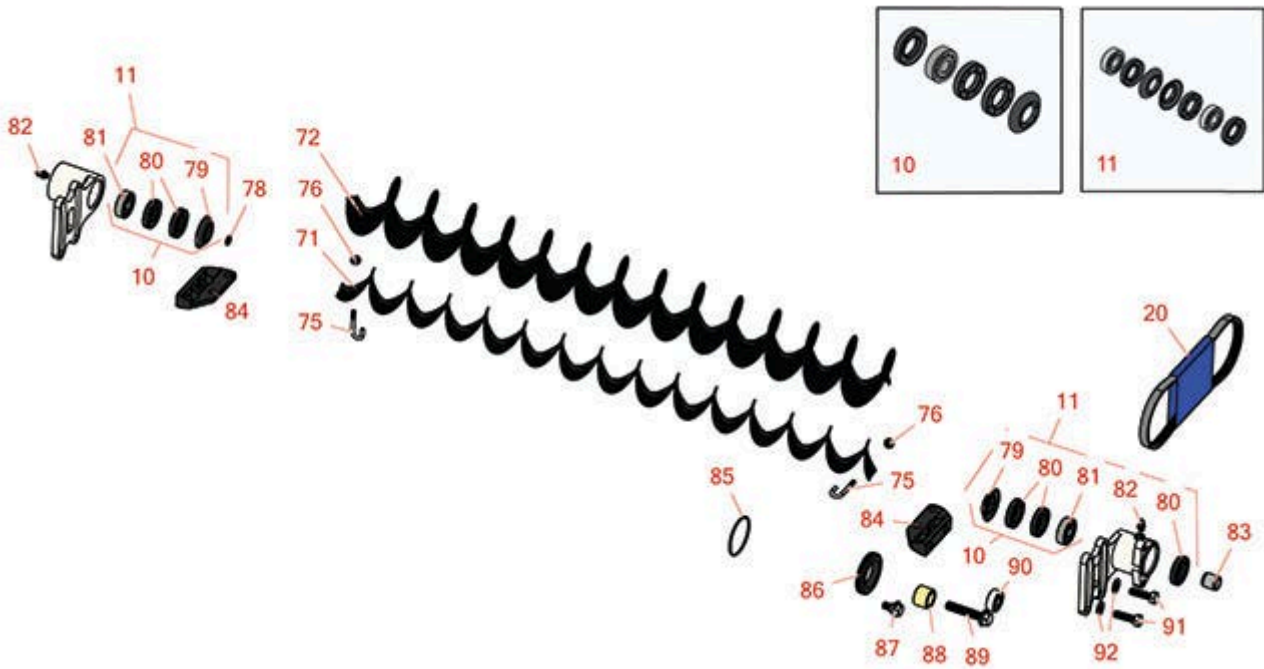




# Replaces Toro Reelmaster 3100-D Parts

27in DPA Cutting Unit - Models 03188, 03189 & 03190

Rear Roller Brush - Models 03242 & 03243



All original equipment manufacturers names and part numbers are used for identification purposes only, and we are in no way implying that our products are original equipment parts. Prices subject to change without notice.



## Replaces Toro Reelmaster 3100-D Parts

27in DPA Cutting Unit - Models 03188, 03189 & 03190

Rear Roller Brush - Models 03242 & 03243



Item No	R&R Part No.	OEM Part No.	Description	Qty Req	Order Quantity
<b>Overhaul Kits</b>					
10	<b>R110-4086</b>	110-4086	Kit - Bearing	0	
<i>Tech Note: Includes 1 ea: R95-0707 Bearing, R108-4172 Seal; &amp; 3 ea: R106-8530 Seal:</i>					
11	<b>R131-3233</b>	131-3233	Groomer/Rrb Seal Kit	1	
<b>Belts</b>					
20	<b>R115-0833</b>	115-0833	Belt- Brush 7 in	1	
20	<b>R150622</b>	115-0828	Belt- Brush, 7-INCH Reels	1	
<b>Other Parts Available</b>					
71	<b>R115-0813</b>	115-0813	Brush - Roller - 2 in OD x 27 in	1	
72	<b>R115-0838</b>	115-0838	Brush - Roller - High HOC 3 1/2 in OD x 27 in	1	
75	<b>R105-9632</b>	105-9632	Bolt - J	2	
76	<b>R3296-2</b>	32127-10, 3296-2, 9157404	Nut - #10 Lock	2	
78	<b>R237-22</b>	107-8844, 237-22, 237-78	O-Ring	1	
79	<b>R108-4172</b>	108-4172	Seal - Excluder	0	
80	<b>R106-8530</b>	106-8530	Seal - Oil	5	
81	<b>R95-0707</b>	95-0707	Bearing - Self Aligning	0	

All original equipment manufacturers names and part numbers are used for identification purposes only, and we are in no way implying that our products are original equipment parts. Prices subject to change without notice.



## Replaces Toro Reelmaster 3100-D Parts

27in DPA Cutting Unit - Models 03188, 03189 & 03190

Rear Roller Brush - Models 03242 & 03243



Item No	R&R Part No.	OEM Part No.	Description	Qty Req	Order Quantity
82	<b>R302-5</b>	21-6010, 302-11, 302-37, 302-47, 302-5, 302-57, 302-58, 302-6, 31-0300, 32-9660, 60-0800, 62-3880, 92-4181	Fitting - Grease	0	
83	<b>R108-4491</b>	108-4491	Spacer - Hardened	1	
84	<b>R108-4480</b>	108-4480	Bracket - Rear Roller Brush	2	
85	<b>R112-6967</b>	112-6967	O-Ring	1	
86	<b>R240-7</b>	240-7	Grommet - Rubber - 2 in OD	1	
87	<b>R27-0411</b>	27-0411	Bolt - Shoulder	1	
88	<b>R108-4477</b>	108-4477	Spacer	1	
89	<b>R66-9302</b>	3234-20, 66-9302	Screw - HHF, Whiz	1	
90	<b>R110-1701</b>	110-1701	Bearing	1	
91	<b>R322-16</b>	322-16, Apr-00	Bolt - Hex HD 5/16-18 x 1-1/8	4	
92	<b>R94-6936</b>	94-6936, 94-9236	Washer - Hardened - 5/16 SAE	4	

All original equipment manufacturers names and part numbers are used for identification purposes only, and we are in no way implying that our products are original equipment parts. Prices subject to change without notice.