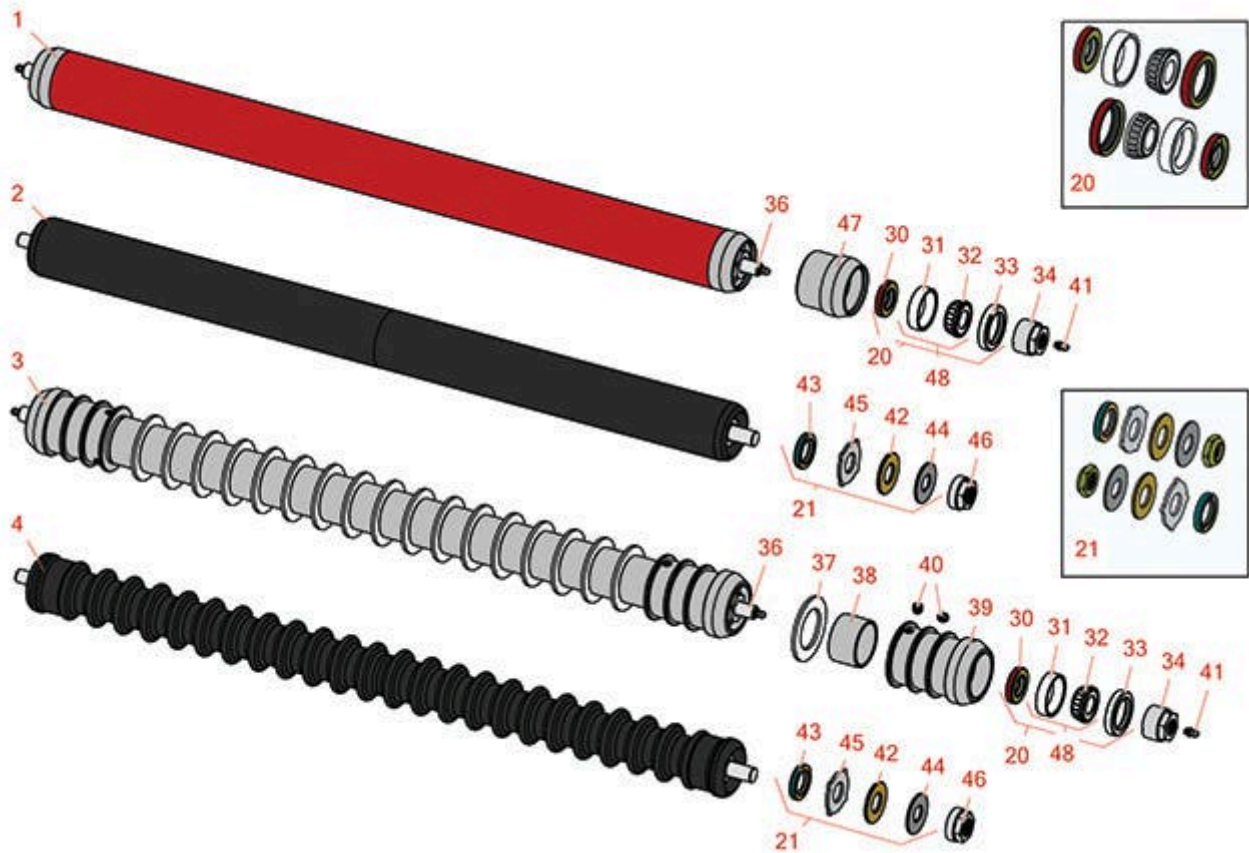




Replaces Toro Reelmaster 3100-D Parts

32in Cutting Unit - Models 03212 & 03238
Rollers



All original equipment manufacturers names and part numbers are used for identification purposes only, and we are in no way implying that our products are original equipment parts. Prices subject to change without notice.



Replaces Toro Reelmaster 3100-D Parts

32in Cutting Unit - Models 03212 & 03238
Rollers



| Item No | R&R Part No. | OEM Part No. | Description | Qty Req | Order Quantity |
|---------|--------------|--------------|-------------|---------|----------------|
|---------|--------------|--------------|-------------|---------|----------------|

R&R Rollers to fit 32" Units

| | | | | |
|---|-----------------|---------|-------------------------------|---|
| 1 | R94-4982 | 94-4982 | Roller - Smooth Tubular Steel | 1 |
|---|-----------------|---------|-------------------------------|---|

Tech Note: Constructed with a through shaft, this heavy duty roller uses greasable tapered bearings for extended life.:

| | | | | |
|---|-----------------|--|-----------------------------------|---|
| 2 | R1504401 | | Roller - Smooth UHMW Polyethylene | 1 |
|---|-----------------|--|-----------------------------------|---|

Tech Note: Machined from solid UHMW, this low maintenance roller uses a 1" solid stainless steel shaft and requires no grease. UHMW material prevents build-up of debris.:

| | | | | |
|---|----------------|---------|-----------------------------------|---|
| 3 | R150720 | 94-4993 | Roller - Grooved Repairable Steel | 1 |
|---|----------------|---------|-----------------------------------|---|

Tech Note: Constructed with a through shaft and greasable tapered bearings for extended life. This roller can be repaired by unscrewing the ends and replacing the series of washers and spacers.:

| | | | | |
|---|-----------------|--|------------------------------------|---|
| 4 | R1504352 | | Roller - Grooved UHMW Polyethylene | 1 |
|---|-----------------|--|------------------------------------|---|

Tech Note: Machined from solid UHMW, this low maintenance roller rotates around a 1" solid stainless steel shaft and requires no bearings or grease. Patented groove design and smooth UHMW material prevents build-up of debris.:

Overhaul Kits

| | | | | |
|----|------------------|----------|-----------------------|---|
| 20 | R106-9607 | 106-9607 | Overhaul Kit - Roller | 1 |
|----|------------------|----------|-----------------------|---|

Tech Note: Includes 2 ea: R253-146 Seals, R253-152 Seals, R254-78 Bearings, R254-79 Bearing Cups, R302-5 Zerks & R71-3590 Nuts:

| | | | | |
|----|----------------|--|---------------------------------|---|
| 21 | R101399 | | Overhaul Kit - UHMW 2 Pc Roller | 1 |
|----|----------------|--|---------------------------------|---|

Tech Note: Fits all R&R 2-1/2" - 3-1/2" Dia. Black UHMW Plastic Rollers that do not use ball bearings.. Includes 2 ea.: R1503230 Star Washers, R1503470 Seals, R150333 Thrust Washers, R3296-15 Locknuts, R1503471 Bronze Thrust Washers:

Other Parts Available

| | | | | |
|----|-----------------|---------------------|---------------------|---|
| 30 | R253-152 | 253-116, 253-152 | Seal - Inner Roller | 2 |
|----|-----------------|---------------------|---------------------|---|

All original equipment manufacturers names and part numbers are used for identification purposes only, and we are in no way implying that our products are original equipment parts. Prices subject to change without notice.



Replaces Toro Reelmaster 3100-D Parts

32in Cutting Unit - Models 03212 & 03238
Rollers



| Item No | R&R Part No. | OEM Part No. | Description | Qty Req | Order Quantity |
|--|-----------------|---|------------------------------------|---------|----------------|
| 31 | R254-79 | 01-103-0060, 01-103-0130, 1-633584, 252-106, 254-79, 32-7800, 32-9590 | Cup - Bearing | 2 | |
| <i>Tech Note: Use R254-79M installation mandrel to properly install race.:</i> | | | | | |
| 32 | R254-78 | 01-102-0060, 01-102-0130, 1-633585, 254-78, 32-7790, 32-9580, 93-4813 | Tapered Bearing Cone | 2 | |
| 33 | R253-146 | 105-0150, 253-143, 253-146, 253-153 | Seal | 2 | |
| 34 | R71-3590 | 61-0370, 71-3590 | Nut - Adjusting Roller | 2 | |
| 36 | R94-4983 | 94-4983 | Shaft - Roller | 1 | |
| 37 | R150672 | | Washer - 2-3/4 Roller | 17 | |
| 38 | R150671 | | Spacer - 2 3/4 / 3 Rollers 13/16 L | 0 | |
| 38 | R150676 | | Spacer - 2-3/4 Dia x 1-1/4 L | 18 | |
| 39 | R150689 | | Roller End - Threaded | 2 | |
| 40 | R150691 | 150691 | Screw - Set Nyloc 3/8-16 x 3/8 | 4 | |

All original equipment manufacturers names and part numbers are used for identification purposes only, and we are in no way implying that our products are original equipment parts. Prices subject to change without notice.



Replaces Toro Reelmaster 3100-D Parts

32in Cutting Unit - Models 03212 & 03238
Rollers



| Item No | R&R Part No. | OEM Part No. | Description | Qty Req | Order Quantity |
|---------|-----------------|--|-------------------------------|---------|----------------|
| 41 | R302-5 | 21-6010, 302-11, 302-37, 302-47, 302-5, 302-57, 302-58, 302-6, 31-0300, 32-9660, 60-0800, 62-3880, 92-4181 | Fitting - Grease | 2 | |
| 42 | R1503471 | | Washer - Thrust SAE660 Bronze | 2 | |
| 43 | R1503470 | | Seal - Inner Wiper | 2 | |
| 44 | R150333 | | Washer - Flat Keyed Outer SS | 2 | |
| 45 | R1503230 | | Washer - Thrust Outer Keyed | 2 | |
| 46 | R150368 | | Nut - Adjusting | 2 | |
| 47 | R61-0380 | 61-0380 | Roller End - Cap Solid | 2 | |
| 48 | R500534 | 1-633585 | Bearing - with Cup | 2 | |

All original equipment manufacturers names and part numbers are used for identification purposes only, and we are in no way implying that our products are original equipment parts. Prices subject to change without notice.