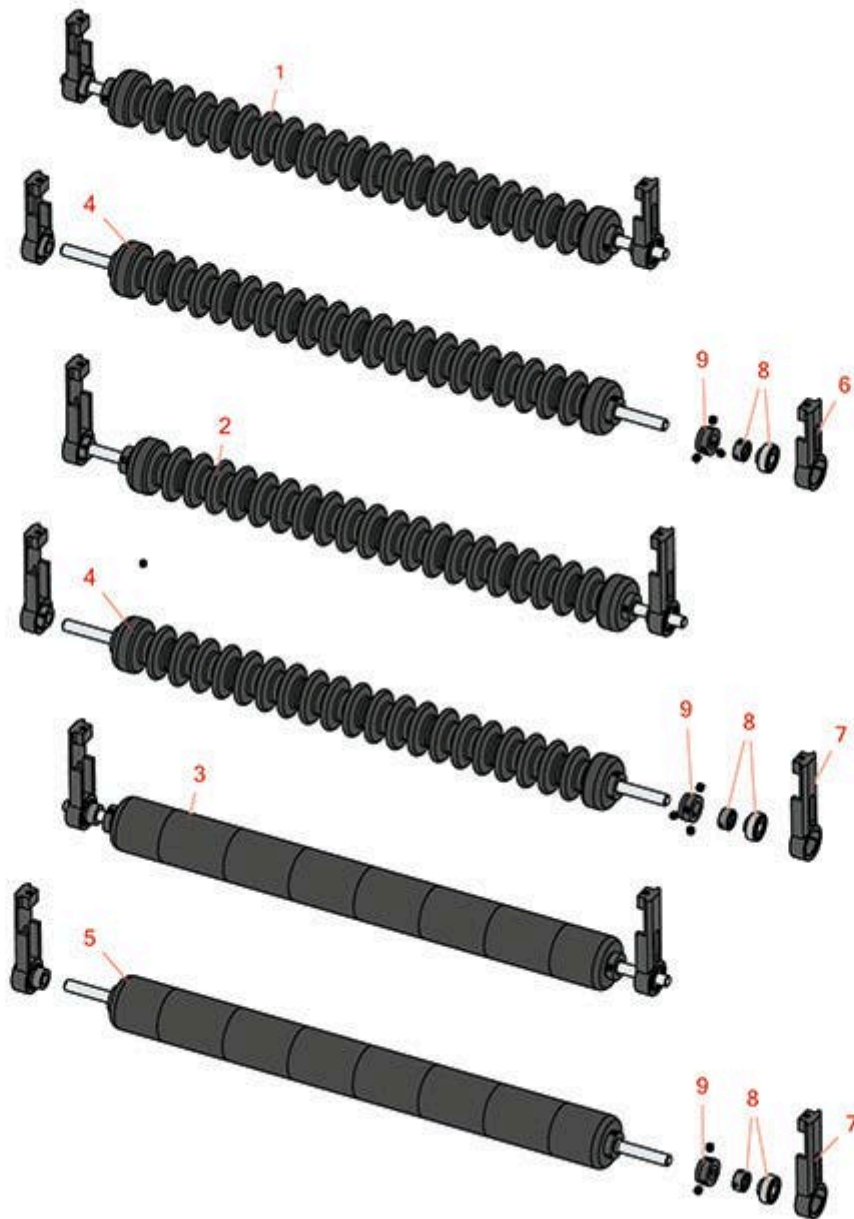




Replaces Toro Reelmaster 2600-D Parts

32in Cutting Unit - Models 03466 & 03467
Minuteman Roller System



All original equipment manufacturers names and part numbers are used for identification purposes only, and we are in no way implying that our products are original equipment parts. Prices subject to change without notice.



Replaces Toro Reelmaster 2600-D Parts

32in Cutting Unit - Models 03466 & 03467

Minuteman Roller System



Item No	R&R Part No.	OEM Part No.	Description	Qty Req	Order Quantity
---------	--------------	--------------	-------------	---------	----------------

Complete Minuteman Roller Systems to fit 32" Units

1	RMT3101		Minuteman Front Grooved Roller System	0	
<i>Detail Description: Complete roller systems include roller and two brackets with bearings.:</i>					
2	RMT3102		Minuteman Rear Grooved Roller System	0	
<i>Detail Description: Complete roller systems include roller and two brackets with bearings.:</i>					
3	RMT3103		Minuteman Rear Smooth Roller System	0	
<i>Detail Description: Complete roller systems include roller and two brackets with bearings.:</i>					

Minuteman Rollers Only to fit 32" Units

4	RM522		Minuteman Grooved Roller Only	0	
<i>Detail Description: Fits 30" Units. Use with Minuteman Roller Bracket System Only:</i>					
5	RM523		Minuteman Smooth Roller Only	0	
<i>Detail Description: Fits 30" Units. Use with Minuteman Roller Bracket System Only:</i>					

Other Parts Available

6	RT221		Bracket - Front RH/LH	0	
7	RT231		Bracket - Rear RH/LH	0	
8	RMMB157		Bearing w/Locking Collar	0	
9	RMM3		End Hub - 7/8 ID	0	

All original equipment manufacturers names and part numbers are used for identification purposes only, and we are in no way implying that our products are original equipment parts. Prices subject to change without notice.