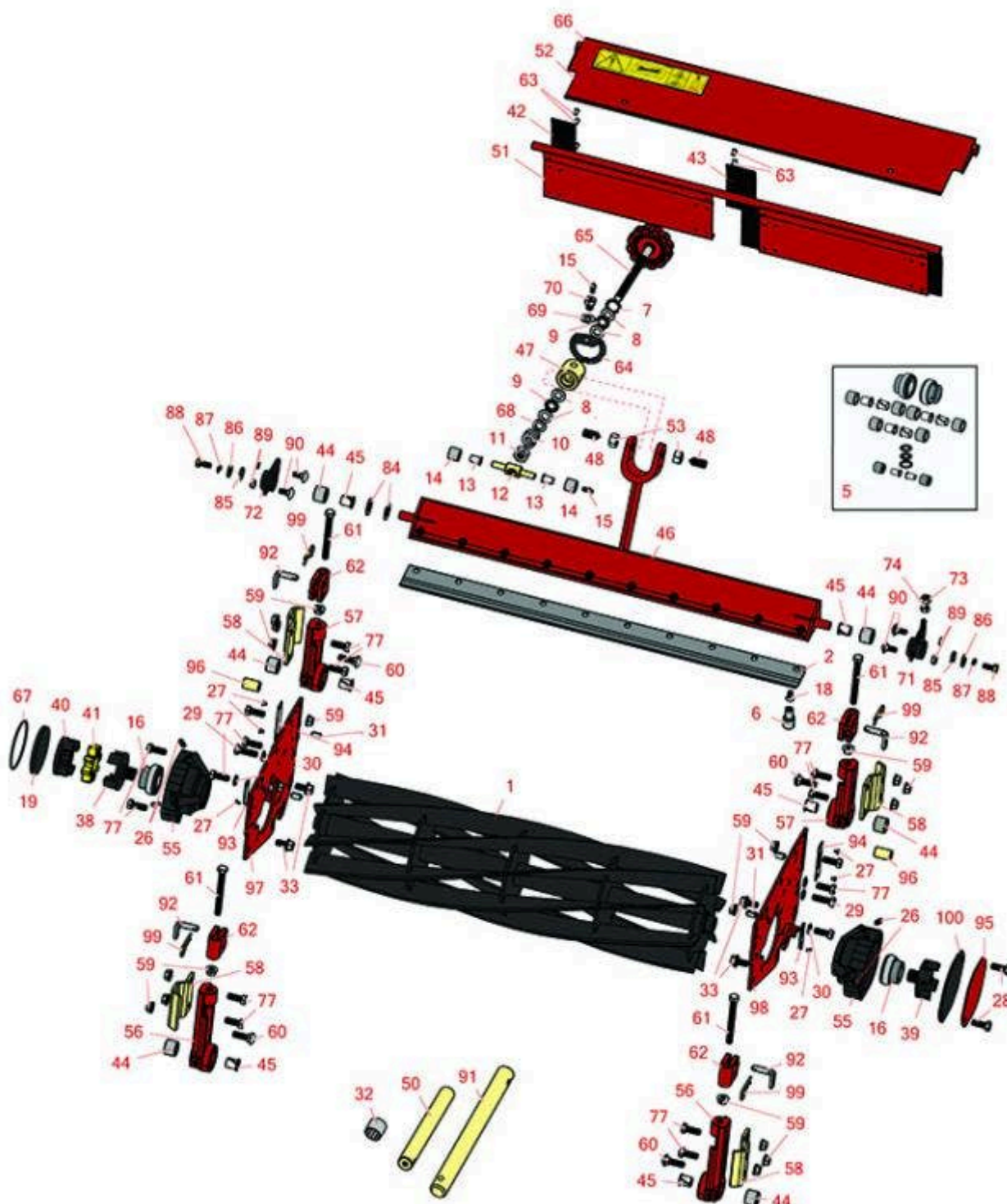




# Replaces Toro Reelmaster 2300D Parts

27in Cutting Unit - Models 03461 & 03462

Reel & Bedknife



All original equipment manufacturers names and part numbers are used for identification purposes only, and we are in no way implying that our products are original equipment parts. Prices subject to change without notice.



# Replaces Toro Reelmaster 2300D Parts

27in Cutting Unit - Models 03461 & 03462

Reel & Bedknife



Item No	R&R Part No.	OEM Part No.	Description	Qty Req	Order Quantity
---------	--------------	--------------	-------------	---------	----------------

## R&R Reels, Lifetime Guaranteed

1	<b>R94-3631</b>	93-8839, 94-3631, 99-3468, 99-3482	Reel - 5 Blade Fits 27x7	3	
---	-----------------	---	--------------------------	---	--

*Detail Description: R&R Reel blades are expertly crafted from premium high carbon-boron alloy steel, heat-treated to perfectly complement both R&R and OEM bedknives. Each reel undergoes precision cylindrical grinding on bearing surfaces, followed by relief grinding for optimal performance. Advanced computer balancing ensures extended reel and bearing life. Backed by our lifetime guarantee against defects in materials and craftsmanship under normal use, R&R Reels deliver unmatched durability and cutting precision you can trust.:*

1	<b>R94-3630</b>	93-8833, 94-3630, 99-3469, 99-3483	Reel - 8 Blade Fits 27x7	3	
---	-----------------	---	--------------------------	---	--

*Detail Description: R&R Reel blades are expertly crafted from premium high carbon-boron alloy steel, heat-treated to perfectly complement both R&R and OEM bedknives. Each reel undergoes precision cylindrical grinding on bearing surfaces, followed by relief grinding for optimal performance. Advanced computer balancing ensures extended reel and bearing life. Backed by our lifetime guarantee against defects in materials and craftsmanship under normal use, R&R Reels deliver unmatched durability and cutting precision you can trust.:*

## R&R Bedknives, Lifetime Guaranteed

2	<b>R62-5180</b>	105-6785, 61-0800, 62-5180	Bedknife - Lowcut - 27 in Unit	1	
---	-----------------	----------------------------------	--------------------------------	---	--

*Detail Description: R&R Bedknives are manufactured from high carbon-boron alloy steel and then hardened to RC46-49 to match the temper of our reel blades and original equipment reels. Bedknives are surface ground on the top and front edge and straightened three times before being packaged with oil for rust prevention. All R&R Bedknives now have an increased front edge grind for added life. All R&R Bedknives are guaranteed against defects in material and workmanship under normal use for the life of the part.:*

2	<b>R104-1380</b>	104-1380	Bedknife - Highcut - 27 in Unit	1	
---	------------------	----------	---------------------------------	---	--

All original equipment manufacturers names and part numbers are used for identification purposes only, and we are in no way implying that our products are original equipment parts. Prices subject to change without notice.



## Replaces Toro Reelmaster 2300D Parts

27in Cutting Unit - Models 03461 & 03462  
Reel & Bedknife



Item No	R&R Part No.	OEM Part No.	Description	Qty Req	Order Quantity
---------	--------------	--------------	-------------	---------	----------------

*Detail Description:* R&R Bedknives are manufactured from high carbon-boron alloy steel and then hardened to RC46-49 to match the temper of our reel blades and original equipment reels. Bedknives are surface ground on the top and front edge and straightened three times before being packaged with oil for rust prevention. All R&R Bedknives now have an increased front edge grind for added life. All R&R Bedknives are guaranteed against defects in material and workmanship under normal use for the life of the part.:

### R&R Razor Tool Steel Bedknives, Lifetime Guaranteed

2	<b>R112-8910</b>	112-8910	Bedknife - Razor Tool Steel - 27 High Cut	1
---	------------------	----------	---	---

*Detail Description:* R&R Razor bedknives are manufactured from premium alloy tool steel steel and then hardened to RC48-51 to match the temper of our Razor reel blades and original equipment premium series reels. Bedknives are surface ground on the top and front edge and specially packaged for rust prevention. All R&R Bedknives now have an increased front edge grind for added life. All R&R Bedknives are guaranteed against defects in material and workmanship under normal use for the life of the part. You can expect up to double the life over standard bedknives.:

### Overhaul Kits

5	<b>R150545</b>		Overhaul Kit - Cutting Unit	1
---	----------------	--	-----------------------------	---

*Detail Description:* Includes 6 ea.: R56-9510 Rubber Bushings, R56-9520 Nyliner Bushings; 2 ea.: R52-2890 Bushings, R71-1360 Reel Bearings, R62-5510 Bushings, R257-6 Thrust Bearings; 1 ea.: R253-84 Seal:

### Service Tools

6	<b>R51-0880</b>	51-0880	Bedknife Screw Driver Tool	0
---	-----------------	---------	----------------------------	---

*Detail Description:* Easily install and remove bed knife screws with the help of a ratchet with 3/8" drive. Tool manufactured with hardened alloy steel.:

### Other Parts Available

7	<b>R253-84</b>	253-84, 7-0044	Seal - Micro Adj.	1
8	<b>R257-5</b>	257-5	Washer - Thrust	4
9	<b>R257-6</b>	257-6	Bearing - Thrust	2
10	<b>R57-5270</b>	57-5270	Spring - Adjusting Handle	1

All original equipment manufacturers names and part numbers are used for identification purposes only, and we are in no way implying that our products are original equipment parts. Prices subject to change without notice.



## Replaces Toro Reelmaster 2300D Parts

27in Cutting Unit - Models 03461 & 03462

Reel & Bedknife



Item No	R&R Part No.	OEM Part No.	Description	Qty Req	Order Quantity
11	<b>R3296-62</b>	3296-62	Locknut - 1/2-20 LH Jam	1	
12	<b>R57-5260</b>	107-7409, 57-5260	Pivot - 1/2-20 - Bed Bar	1	
13	<b>R52-2890</b>	52-2890	Bushing - Flanged	2	
14	<b>R62-5510</b>	52-2870, 62-5510	Bushing	2	
15	<b>R302-18</b>	302-18	Zerk - Grease Press Style	1	
16	<b>R71-1360</b>	251-219, 251-253, 251-254, 251-320, 71-1360, 88-7880, 94-3405	Bearing	2	
16	<b>R100-4926</b>	100-4926	Bearing - Reel Self Aligning	2	
18	<b>R150475</b>	3-6462	Screw - Bedknife Stainless 5/16-18 x 5/8	10	
<i>Detail Description: Pre-Packaged in bags of 50:</i>					
18	<b>R150476</b>	3-3816, 3-6462, 57-4910	Screw - Bedknife 5/16-18 x 5/8	10	
19	<b>R94-2703</b>	94-2703	Plug - Plastic Spindle Housing	1	

All original equipment manufacturers names and part numbers are used for identification purposes only, and we are in no way implying that our products are original equipment parts. Prices subject to change without notice.



## Replaces Toro Reelmaster 2300D Parts

27in Cutting Unit - Models 03461 & 03462

Reel & Bedknife



Item No	R&R Part No.	OEM Part No.	Description	Qty Req	Order Quantity
26	R302-5	21-6010, 302-11, 302-37, 302-47, 302-5, 302-57, 302-58, 302-6, 31-0300, 32-9660, 60-0800, 62-3880, 92-4181	Fitting - Grease	0	
27	R3290-55	3290-55	Rivet - 5/32 x 3/8 Pop Rivet	6	
28	R323-2	01-178-0604, 323-2	Bolt - Hex HD 3/8-16 x 1	2	
29	R400264	01-150-0180, 01-178-0610, 20-48-AD, 20-48-AGD, 32-9160, 3224-3, 323-29, 323-7, 400264, 908035P	Bolt - Hex HD 3/8-16 x 1-1/4	2	
30	R3254-6	01-166-0010, 01-166-0280, 01-166-0610, 3253-5, 3254-18, 3254-6, 3290-223, 48-9370	Washer - Lock 3/8	0	
31	R32121-36	32121-36	Pin-Spring	4	
32	R3-0348	3-0348	Bushing	12	
33	R110-1718	110-1718	Screw-HHF	0	
38	R93-8825	93-8825	Coupling - RH Reel	1	

All original equipment manufacturers names and part numbers are used for identification purposes only, and we are in no way implying that our products are original equipment parts. Prices subject to change without notice.



## Replaces Toro Reelmaster 2300D Parts

27in Cutting Unit - Models 03461 & 03462  
Reel & Bedknife



Item No	R&R Part No.	OEM Part No.	Description	Qty Req	Order Quantity
39	<b>R93-8826</b>	93-8826	Coupling - LH Reel	1	
40	<b>R93-8823</b>	93-8823	Coupling - Motor End	1	
41	<b>R93-8827</b>	93-8827	Spider - Reel Coupling	1	
42	<b>R61-3280</b>	61-3280	Cover - Rubber Side	2	
43	<b>R61-3290</b>	61-3290	Cover - Rubber Center	2	
44	<b>R56-9510</b>	56-9510	Bushing - Rubber For Bed Bar / RI	6	
45	<b>R56-9520</b>	56-9520	Bushing - Nyliner	6	
46	<b>R61-1210</b>	61-1210, 61-1210-01	Backing Bar - Bed Knife	1	
<i>Tech Note: Fits 27" Unit:</i>					
47	<b>R52-2980</b>	52-2980	Housing - Pivot Spa	1	
48	<b>R57-5190</b>	32110-19, 57-5190	Screw - Adjusting	2	
50	<b>R92-1815</b>	92-1815	Shaft - Front Pivot	2	
51	<b>R93-8849</b>	61-1130, 93-8817, 93-8849	Shield - Rear Grass Fits 27 in Units	1	
52	<b>R94-3621</b>	94-3621	Shield - Top Incl. Safety Decal 27 in	1	
53	<b>R443818</b>	01-191-0813, 3218-18, 3218-5	Nut - 1/2-13 Hex Jam Zinc	2	
55	<b>R99-3404</b>	93-6930, 99-3404	Housing-Bearing	2	
56	<b>R61-0430</b>	61-0430, 61-0430-01	Bracket - Long - Rear Roller	2	
56	<b>R14-4479</b>	14-4479	Bracket - Assy - Rear Roller	2	

All original equipment manufacturers names and part numbers are used for identification purposes only, and we are in no way implying that our products are original equipment parts. Prices subject to change without notice.



## Replaces Toro Reelmaster 2300D Parts

27in Cutting Unit - Models 03461 & 03462

Reel & Bedknife



Item No	R&R Part No.	OEM Part No.	Description	Qty Req	Order Quantity
57	<b>R61-0440</b>	61-0440	Bracket - Short - Front Roller	2	
57	<b>R14-4489</b>	14-4489	Bracket - Assy - Front Roller	2	
58	<b>R61-0910</b>	61-0910	Bracket	4	
59	<b>R3296-39</b>	32127-25, 32128-36, 3290-357, 3296-17, 3296-22, 3296-39, 915663P, 99-7443	Locknut - 3/8-16 Nylon	16	
60	<b>R3231-25</b>	01-173-0610, 30-9970, 3231-25, 3231-3, 900064P	Bolt - Carriage 3/8-16 x 1-1/4	2	
61	<b>R61-0790</b>	323-57, 61-0790	Bolt - Roller Adjustment	4	
62	<b>R61-0420</b>	61-0420, 61-0420-01	Support - HOC	4	
63	<b>R3295-48</b>	3295-48	Rivet - 3/16 x 3/8 Tub	12	
63	<b>R700382</b>	700382	Rivet - Guard	12	
64	<b>R52-3000</b>	52-3000	Arm - Spring	1	
65	<b>R61-1070</b>	61-1070	Handle - Bed Bar Adjustment	1	
65	<b>R94-5067</b>	94-5067	Handle - Adjusting	1	
66	<b>R93-8064</b>	93-8064	Decal - Warning	1	
67	<b>R353-949</b>	353-949, 60-3520	O-Ring	1	
68	<b>R29-8870</b>	29-8870	Washer - Adj. Handle	1	

All original equipment manufacturers names and part numbers are used for identification purposes only, and we are in no way implying that our products are original equipment parts. Prices subject to change without notice.



## Replaces Toro Reelmaster 2300D Parts

27in Cutting Unit - Models 03461 & 03462

Reel & Bedknife



Item No	R&R Part No.	OEM Part No.	Description	Qty Req	Order Quantity
69	<b>R187-0</b>	3256-25, 7-0032	Washer - Flat 7/16 SAE	1	
70	<b>R52-2990</b>	324-25, 52-2990	Bolt - Spring Retainer	1	
71	<b>R93-6855</b>	93-6855	Housing - Bed Bar Adj.	1	
71	<b>R16-9769</b>	16-9769	Housing - Bed Bar - Adj. Side	1	
72	<b>R61-1010</b>	61-1010	Housing - Bed Bar	1	
72	<b>R14-4459</b>	14-4459	Housing - w/Bushing For Bed Bar	1	
73	<b>R444754</b>	01-189-0518, 3296-4	Locknut - 5/16-24 Center	1	
74	<b>R3219-2</b>	01-188-0524, 22-12-BJKD, 3219-2, 915720	Nut - 5/16-24 Zinc	1	
77	<b>R323-6</b>	01-150-0010, 01-178-0608, 20-47-AD, 20-47-AGD, 3224-2, 323-6, 49-3510, 908034P, 908332	Bolt - Hex HD 3/8-16 x 1 GR5 YZ	8	
84	<b>R61-1950</b>	61-1950	Washer - Nylon - Bed Bar	1	
85	<b>R62-7120</b>	62-7120	Washer	1	
86	<b>R3256-56</b>	3256-56, 60-4750	Washer	1	

All original equipment manufacturers names and part numbers are used for identification purposes only, and we are in no way implying that our products are original equipment parts. Prices subject to change without notice.





## Replaces Toro Reelmaster 2300D Parts

27in Cutting Unit - Models 03461 & 03462

Reel & Bedknife



Item No	R&R Part No.	OEM Part No.	Description	Qty Req	Order Quantity
87	R3253-4	01-166-0110, 01-166-0510, 23-10-GD, 24-7170, 30-8520, 3253-4, 48-9350, 48-9360, 48-9570, 68-9420, 99-7577	Washer - Lock 5/16 Zinc	1	
88	R322-3	01-150-1420, 01-178-0506, 20-24-AD, 20-24-AGD, 322-3, 48-9270, 513339, 908017P	Bolt - Hex HD 5/16-18 x 3/4	1	
89	R3296-29	1-804256, 3290-357, 3296-29, 915662P	Locknut - 5/16-18 ESNA	4	
90	R3230-1	01-173-0506, 3230-1, 3230-20, 900037P	Bolt - Carriage 5/16-18 x 3/4	4	
91	R95-8979	95-8979	Shaft - Pivot - 11.687 in Hardened	3	
92	R71-3690	61-0630, 71-3690	Spade - Bent	4	
93	R61-3790	61-3790	Plate-HOC, Front	2	
94	R61-3800	61-3800	Plate - HOC Rear	2	
95	R93-6960	93-6960	Cover - Bearing Holder	1	
96	R93-6981	93-6981	Spacer	8	

All original equipment manufacturers names and part numbers are used for identification purposes only, and we are in no way implying that our products are original equipment parts. Prices subject to change without notice.



## Replaces Toro Reelmaster 2300D Parts

27in Cutting Unit - Models 03461 & 03462

Reel & Bedknife



Item No	R&R Part No.	OEM Part No.	Description	Qty Req	Order Quantity
97	<b>R94-3695-01</b>	94-3695, 94-3695-01	Plate - Side Reel RH	1	
98	<b>R94-3697-01</b>	94-3697, 94-3697-01	Plate - Side Reel LH	1	
99	<b>R3290-467</b>	3290-467	Pin-Hair	4	
100	<b>R94-5979</b>	94-5979	Gasket	1	

All original equipment manufacturers names and part numbers are used for identification purposes only, and we are in no way implying that our products are original equipment parts. Prices subject to change without notice.