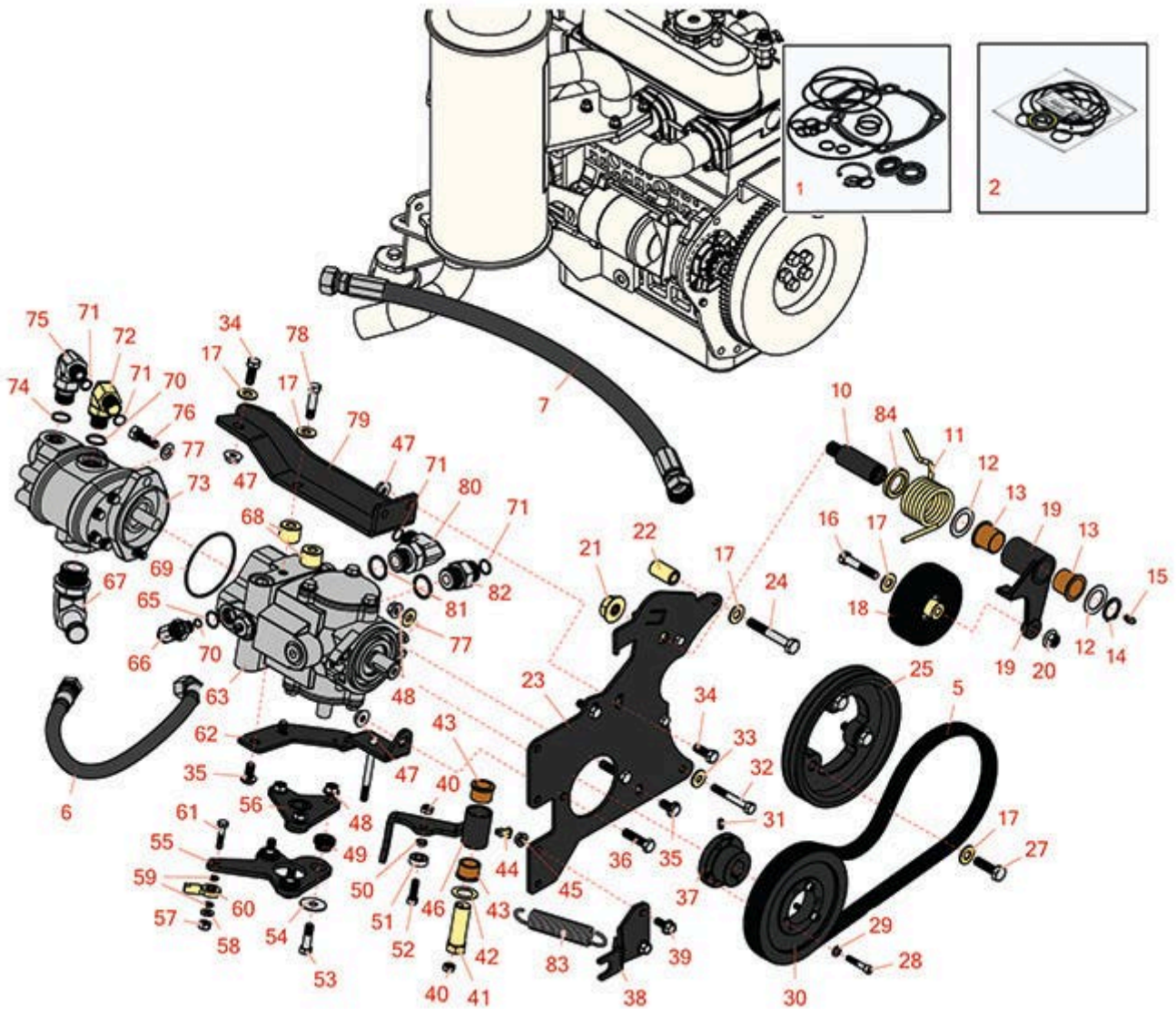




Replaces Toro Groundsmaster 3500-G Parts

*Traction Unit - Model 30809
Hydrostat Neutral Arm*



All original equipment manufacturers names and part numbers are used for identification purposes only, and we are in no way implying that our products are original equipment parts. Prices subject to change without notice.



Replaces Toro Groundsmaster 3500-G Parts

Traction Unit - Model 30809
Hydrostat Neutral Arm



| Item No | R&R Part No. | OEM Part No. | Description | Qty Req | Order Quantity |
|--|------------------|--------------|---|---------|----------------|
| 1 | R120-5754 | 120-5754 | Seal Kit - Eaton Hydraulic Pump R104-4890 | 1 | |
| Overhaul Kits | | | | | |
| 2 | R110-8755 | 110-8755 | Seal Kit | 1 | |
| Belts | | | | | |
| 5 | R120-3351 | 120-3351 | Belt - 3V | 1 | |
| <i>Tech Note: Fits Model 30807:</i> | | | | | |
| 5 | R99-3619 | 99-3619 | Belt - 3V | 1 | |
| <i>Tech Note: Fits Models 30839/30843:</i> | | | | | |
| Hoses | | | | | |
| 6 | R92-7595 | 92-7595 | Hydraulic Hose Assy | 1 | |
| 7 | R104-0488 | 104-0488 | Hydraulic Hose Assy | 1 | |
| Other Parts Available | | | | | |
| 10 | R99-3624 | 99-3624 | Shaft- Pivot - Idler | 1 | |
| 11 | R115-3488 | 115-3488 | Spring - Torsion | 1 | |
| 12 | R74-1810 | 74-1810 | Washer | 2 | |
| 13 | R99-3631 | 99-3631 | Bushing - Flanged | 2 | |
| 14 | R458039 | 32151-36 | Ring - Retaining | 1 | |

All original equipment manufacturers names and part numbers are used for identification purposes only, and we are in no way implying that our products are original equipment parts. Prices subject to change without notice.



Replaces Toro Groundsmaster 3500-G Parts

*Traction Unit - Model 30809
Hydrostat Neutral Arm*



| Item No | R&R Part No. | OEM Part No. | Description | Qty Req | Order Quantity |
|---------|--------------------|--|--|---------|----------------|
| 15 | R302-5 | 21-6010, 302-11, 302-37, 302-47, 302-5, 302-57, 302-58, 302-6, 31-0300, 32-9660, 60-0800, 62-3880, 92-4181 | Fitting - Grease | 1 | |
| 16 | R323-10 | 01-150-0680, 01-178-0616, 100-6663, 100-8320, 1489, 20-51-AD, 20-51-AGD, 3224-6, 323-10, 323-35, 908336 | Bolt - Hex HD 3/8-16 x 2 | 1 | |
| 17 | R80-6990 | 80-6990 | Washer - Hardened | 9 | |
| 18 | R107-7834 | 107-7834, 139-6031 | Pulley - Idler - 4 in x 3/8 Mt | 1 | |
| 19 | R99-3623-03 | 99-3623-03 | Arm - Idler | 1 | |
| 20 | R32128-21 | 32128-21 | Locknut - Flanged 3/8-16 Whiz Top Lock | 1 | |
| 21 | R32128-54 | 32128-54 | Nut - 5/8-18 Hex Serr Flanged | 1 | |
| 22 | R95-8736 | 95-8736 | Spacer | 1 | |
| 23 | R95-8933-03 | 95-8933, 95-8933-03 | Plate - Mount - Pump | 1 | |
| 24 | R42-9370 | 42-9370 | Bolt - Hex HD 10mm x 70mm | 1 | |
| 25 | R99-3626-03 | 99-3626-03 | Pulley | 1 | |

All original equipment manufacturers names and part numbers are used for identification purposes only, and we are in no way implying that our products are original equipment parts. Prices subject to change without notice.



Replaces Toro Groundsmaster 3500-G Parts

*Traction Unit - Model 30809
Hydrostat Neutral Arm*



| Item No | R&R Part No. | OEM Part No. | Description | Qty Req | Order Quantity |
|---------|------------------|--|---|---------|----------------|
| 27 | R56-2140 | 56-2140 | Bolt | 3 | |
| 28 | R316797 | 321-13 | Bolt - 1/4-20 x 1-1/4 | 3 | |
| 29 | R3253-3 | 01-166-0070, 01-166-0410, 23-9-GD, 24-7150, 3253-3, 3256-1, 352-167 | Washer - Lock 1/4 | 3 | |
| 30 | R99-3620 | 99-3620 | PULLEY-3V - Pump | 1 | |
| 30 | R120-3350 | 120-3350 | PULLEY-3V | 1 | |
| 31 | R3241-5 | 3241-5, 3245-7, 352-103, Jul-93 | Screw - Set 1/4-20 x 3/8 | 1 | |
| 32 | R151379 | 33114-060, 42-9510 | Bolt - Hx HD 8-1.25 x 65mm | 1 | |
| 33 | R87-8640 | 87-7510, 87-8640 | Washer - Flat | 1 | |
| 34 | R3234-11 | 3234-11 | Bolt - Hex Washer HD | 4 | |
| 35 | R3234-1 | 321-11, 3234-1 | Bolt - Flanged Serrated Hex HD 3/8-16 x 3/4 | 3 | |
| 36 | R323-8 | 01-150-0060, 01-178-0612, 20-49-AD, 20-49-AGD, 323-8, 3273-41, 908036P | Bolt - Hex HD 3/8-16 x 1-1/2 GR8 | 2 | |
| 37 | R93-6842 | 93-6842 | Bushing - Taper Lock 7/8 | 1 | |
| 37 | R100-4813 | 100-4813 | Bushing - Taper Lock | 1 | |

All original equipment manufacturers names and part numbers are used for identification purposes only, and we are in no way implying that our products are original equipment parts. Prices subject to change without notice.



Replaces Toro Groundsmaster 3500-G Parts

*Traction Unit - Model 30809
Hydrostat Neutral Arm*



| Item No | R&R Part No. | OEM Part No. | Description | Qty Req | Order Quantity |
|---------|---------------------|--|----------------------------------|---------|----------------|
| 38 | R104-0464-03 | 104-0464-03, 99-3553, 99-3553-03 | Bracket - Support | 1 | |
| 39 | R3234-5 | 3234-5, 62-3310 | Bolt - 5/16-18x3/4 Hx Ser Was HD | 2 | |
| 40 | R3296-29 | 1-804256, 3290-357, 3296-29, 915662P | Locknut - 5/16-18 ESNA | 2 | |
| 41 | R76-8640 | 76-8640 | Stud - Traction | 1 | |
| 42 | R3-6498 | 3--6498, 3-6498, 47-8270 | Washer - Thrust | 1 | |
| 43 | R256-113 | 256-113 | Bushing - 3/4 ID x 1 1/8 Flange | 2 | |
| 44 | R302-60 | 302-60 | Zerk - Grease 90 Deg. | 1 | |
| 45 | R32128-44 | 32128-44 | Nut | 2 | |
| 46 | R104-0422 | 104-0422 | Neutral Arm Assy | 1 | |
| 47 | R32128-43 | 30-8990, 32128-43, 3290-357 | Nut - Flanged Whiz - 3/8-16 | 5 | |
| 48 | R3296-39 | 32127-25, 32128-36, 3290-357, 3296-17, 3296-22, 3296-39, 915663P, 99-7443 | Locknut - 3/8-16 Nylon | 5 | |
| 49 | R63-9750 | 63-9750, 64-9750 | Mount - Rubber | 3 | |
| 50 | R100-4817 | 100-4817 | Spacer - Bearing | 1 | |

All original equipment manufacturers names and part numbers are used for identification purposes only, and we are in no way implying that our products are original equipment parts. Prices subject to change without notice.



Replaces Toro Groundsmaster 3500-G Parts

*Traction Unit - Model 30809
Hydrostat Neutral Arm*



| Item No | R&R Part No. | OEM Part No. | Description | Qty Req | Order Quantity |
|---------|--------------------|--|--|---------|----------------|
| 51 | R251-259 | 251-259, 251-307 | Bearing - Ball | 1 | |
| 52 | R3274-104 | 3274-104 | Bolt - Hx Soc Button HD | 1 | |
| 53 | R150776 | 95-3857 | Bolt - Button HD Soc CS 3/8-16 x 1-1/2 | 3 | |
| 54 | R2844 | 2844 | Washer | 3 | |
| 55 | R99-3594-03 | 99-3594-03 | Lever - Pump | 1 | |
| 56 | R99-3598-03 | 120-5566, 99-3598-03 | Hub Assy | 1 | |
| 57 | R301504 | 2296-42, 301504, 32127-24, 32128-33, 32146-17, 3296-16, 3296-42, 3296-42 , 915661P | Locknut - ESNA 1/4-20 | 1 | |
| 58 | R3256-22 | 24-9-BD, 3-1032, 3256-1, 3256-22, 93-0954, 93-0989 | Washer - Flat 1/4 Yellow | 1 | |
| 59 | R6050-103 | 48-8010, 48-8030 | Washer - Flat | 2 | |
| 60 | R2411-41 | 2411-41 | Rod End - Ball Joint | 1 | |
| 61 | R400112 | 321-8 | Bolt - Hex HD 1/4-20 x 1-1/4 | 1 | |
| 62 | R95-8960-03 | 95-8960, 95-8960-03 | Bracket- Neutral | 1 | |
| 63 | R104-4890 | 104-4832, 104-4890 | Pump - Piston | 1 | |
| 65 | R237-79 | 237-79 | O-Ring | 1 | |

All original equipment manufacturers names and part numbers are used for identification purposes only, and we are in no way implying that our products are original equipment parts. Prices subject to change without notice.



Replaces Toro Groundsmaster 3500-G Parts

*Traction Unit - Model 30809
Hydrostat Neutral Arm*



| Item No | R&R Part No. | OEM Part No. | Description | Qty Req | Order Quantity |
|---------|------------------|---|----------------------------------|---------|----------------|
| 66 | R340-18 | 340-18 | Hydraulic Fitting | 1 | |
| 67 | R95-3502 | 95-3502 | Fitting - Elbow | 1 | |
| 68 | R99-3440 | 99-3440 | Spacer | 2 | |
| 69 | R353-949 | 353-949, 60-3520 | O-Ring | 1 | |
| 70 | R237-80 | 237-80, 327-80 | O-Ring | 1 | |
| 71 | R237-65 | 237-65, 237.65 | O-Ring | 2 | |
| 72 | R340-17 | 340-17 | No 10 Male Orfs x No 10 Male Orb | 1 | |
| 73 | R108-9036 | 100-1646, 108-9036 | Hydraulic Gear Pump | 1 | |
| 74 | R237-42 | 237-42, 31-4160 | O-Ring | 2 | |
| 75 | R340-77 | 340-100, 340-77, 95-7889 | Hydraulic Fitting | 1 | |
| 76 | R400264 | 01-150-0180, 01-178-0610, 20-48-AD, 20-48-AGD, 32-9160, 3224-3, 323-29, 323-7, 400264, 908035P | Bolt - Hex HD 3/8-16 x 1-1/4 | 2 | |

All original equipment manufacturers names and part numbers are used for identification purposes only, and we are in no way implying that our products are original equipment parts. Prices subject to change without notice.



Replaces Toro Groundsmaster 3500-G Parts

*Traction Unit - Model 30809
Hydrostat Neutral Arm*



| Item No | R&R Part No. | OEM Part No. | Description | Qty Req | Order Quantity |
|---------|--------------------|--|------------------------------|---------|----------------|
| 77 | R453011 | 01-166-0100, 01-166-0120, 01-166-0270, 01-166-0500, 01-166-0600, 01-166-0620, 132-4593, 2356-3, 237-12, 24-10-AD, 24-11-AD, 24-11-BD, 24-12-AD, 24-12-BD, 30-9310, 32-8190, 3256-24, 3256-3, 3256-36, 3256-4, 453011, 47-9950, 48-9220, 513458, 7-0052 | Washer - Flat 3/8 SAE Y/Zinc | 7 | |
| 78 | R323-19 | 323-19 | Bolt - Hx HD 3/8-16 x 1 5/8 | 2 | |
| 79 | R151345 | | Bracket - Hydrostat | 1 | |
| 79 | R99-3436-03 | 99-3436, 99-3436-03 | Support- Pump | 1 | |
| 80 | R340-139 | 340-139 | Hydraulic Fitting - 90 Deg | 1 | |
| 81 | R237-81 | 237-81, 237.81, 327-81 | O-Ring | 2 | |
| 82 | R340-8 | 340-8 | Adapter | 1 | |
| 83 | R94-1369 | 94-1369 | Spring - Extension | 1 | |
| 84 | R99-3625 | 99-3625 | Spacer - Ar - Idler | 1 | |

All original equipment manufacturers names and part numbers are used for identification purposes only, and we are in no way implying that our products are original equipment parts. Prices subject to change without notice.