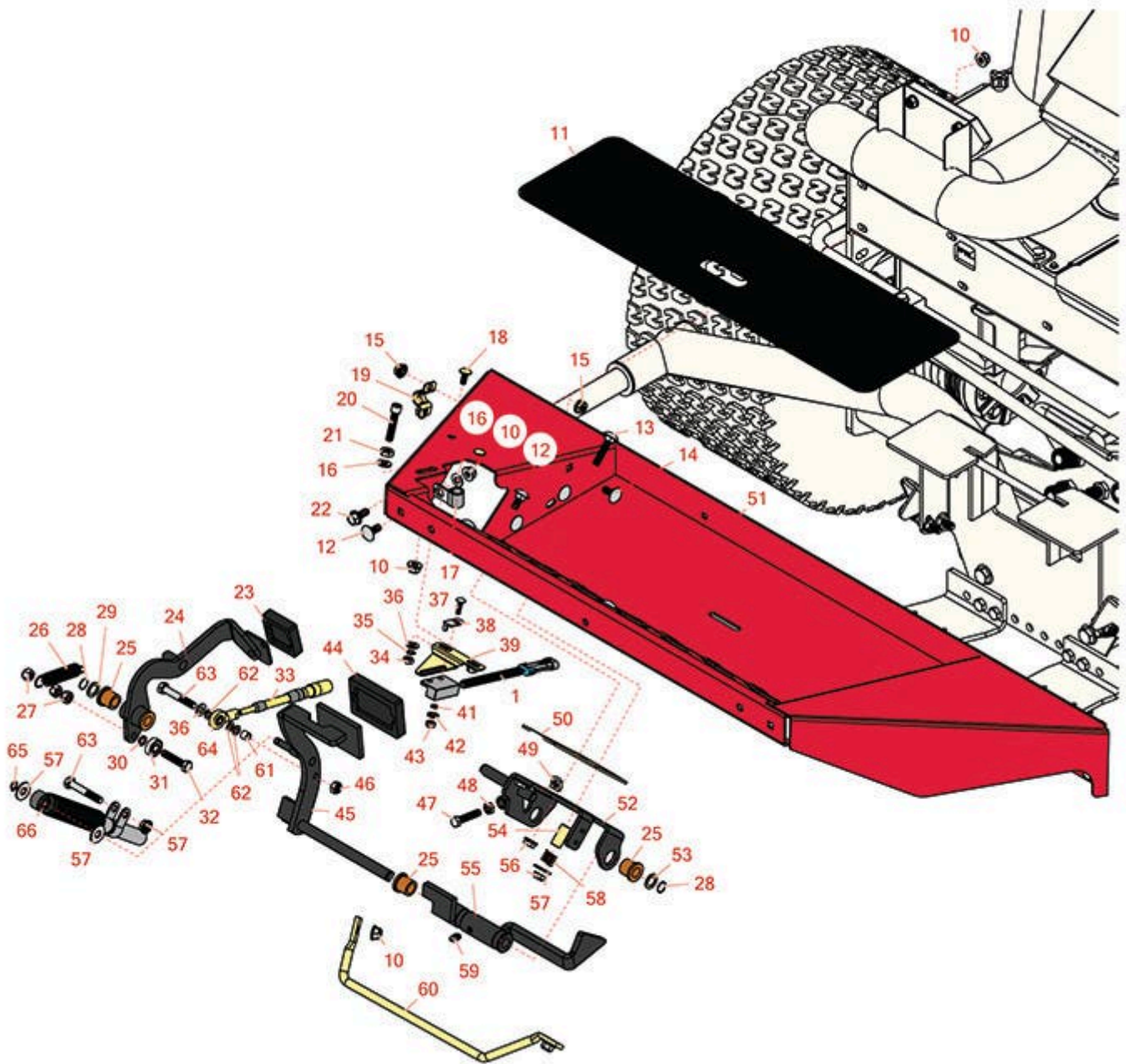




Replaces Toro Groundsmaster 3500-G Parts

*Traction Unit - Model 30809
Front Platform & Traction Control*



All original equipment manufacturers names and part numbers are used for identification purposes only, and we are in no way implying that our products are original equipment parts. Prices subject to change without notice.



Replaces Toro Groundsmaster 3500-G Parts

Traction Unit - Model 30809
Front Platform & Traction Control



Item No	R&R Part No.	OEM Part No.	Description	Qty Req	Order Quantity
---------	--------------	--------------	-------------	---------	----------------

Gauges and Controls

1	R100-1270	100-1270	Sensor - Proximity	1	
---	------------------	----------	--------------------	---	--

Other Parts Available

10	R445722	30-8980, 32128-2, 32128-20, 32128-20, 445722	Nut - Serrated Washer	22	
11	R99-3478	99-3478	Pad - Anti Skid	1	
12	R3230-23	3230-23, Mar-61	Bolt - 5/16-18x3/4 - Carriage	5	
13	R3230-6	3230-6	Bolt - Carriage	1	
14	R112-6950	112-6950, 3230-27	Bolt - Carriage 5/16-18 x 1-1/2	3	
16	R453009	01-166-0400, 24-10-BD, 24-9-AD, 32-9650, 3256-2, 3256-23, 3256-3, 3256-67, 3290-217, 3556-3, 4-2390, 7-0152	Washer - Flat 5/16 SAE	3	

Tech Note: Fits Models 30839/30843/30807 Only:

17	R2412-103	2412-103	Clamp	1	
----	------------------	----------	-------	---	--

Tech Note: Fits Models 30829/30843/30826 Only:

All original equipment manufacturers names and part numbers are used for identification purposes only, and we are in no way implying that our products are original equipment parts. Prices subject to change without notice.



Replaces Toro Groundsmaster 3500-G Parts

*Traction Unit - Model 30809
Front Platform & Traction Control*



Item No	R&R Part No.	OEM Part No.	Description	Qty Req	Order Quantity
18	R3229-1	01-173-0406, 01-178-0408, 3229-1, 3229-25, 900015P	Bolt - 1/4-20 x 3/4 - Carriage	2	
19	R93-2092	93-2092	Clamp - Cable	1	
20	R330748	3274-22, 330748	Screw - 5/16-18x1 Socket HD	1	
21	R443106	01-188-0518, 22-12-AJD, 32111-4, 3217-4, 3217-6, 3218-2, 513295, 513412, 915112P, 915978, 915979	Nut - 5/16-18 Y/Zinc Plated	1	
22	R3234-5	3234-5, 62-3310	Bolt - 5/16-18x3/4 Hx Ser Was HD	10	
23	R74-9110	74-9110	Rubber Foot Pad - Reverse	1	
24	R99-3379	99-3379	Pedal - Reverse	1	
25	R256-243	256-243	Bearing - Flange	4	
26	R99-3476	99-3476	Spring - Extension	1	
27	R3296-47	3296-47	Locknut - 5/16-18 Jam Nyloc	3	
28	R32151-84	32120-3, 32120-80, 32151-84	Ring - Shaft - Ext	2	
29	R455012	3256-26, 41-8440	Washer - Flat 1/2 x 3/4	1	
30	R75-5470	75-5470	Spacer - Bearing	1	

All original equipment manufacturers names and part numbers are used for identification purposes only, and we are in no way implying that our products are original equipment parts. Prices subject to change without notice.



Replaces Toro Groundsmaster 3500-G Parts

*Traction Unit - Model 30809
Front Platform & Traction Control*



Item No	R&R Part No.	OEM Part No.	Description	Qty Req	Order Quantity
31	R251-259	251-259, 251-307	Bearing - Ball	1	
32	R322-7	01-150-0750, 01-150-0760, 01-178-0512, 20-28-AD, 20-28-AGD, 322-7, 3223-4	Bolt - Hex HD 5/16-18 x 1-1/2	1	
33	R100-4815	100-4815	Cable - Traction Control	1	
34	R443102	01-188-0420, 22-11-AJD, 3217-5, 33024-00	Nut - 1/4-20 Yellow Zinc	2	
35	R3255-7	3255-7, 76-5310	Washer - Lock 1/4 Ext Star Z	2	
36	R3256-22	24-9-BD, 3-1032, 3256-1, 3256-22, 93-0954, 93-0989	Washer - Flat 1/4 Yellow	3	
37	R3229-20	3229-20	Screw - 3/16-24 x 3/4 Carr	1	
38	R100-4872	100-4872, 104-7702	Plate-Switch - Neutral	1	
39	R100-4871	100-4871	Bracket - Neutral Switch	1	
41	R3256-14	24-7-BD, 32125-2, 3256-14, 3256-51, 51-2170	Washer - 10 Flat	1	
42	R3255-17	3255-17	Washer - Lock - Ext	1	

All original equipment manufacturers names and part numbers are used for identification purposes only, and we are in no way implying that our products are original equipment parts. Prices subject to change without notice.



Replaces Toro Groundsmaster 3500-G Parts

*Traction Unit - Model 30809
Front Platform & Traction Control*



Item No	R&R Part No.	OEM Part No.	Description	Qty Req	Order Quantity
43	R3296-2	32127-10, 3296-2, 9157404	Nut - #10 Lock	1	
44	R74-9100	74-9100	Rubber Foot Pad - Forward	1	
45	R104-4852-03	104-4852-03, 99-3564	Traction Pedal Assy	1	
46	R301504	2296-42, 301504, 32127-24, 32128-33, 32146-17, 3296-16, 3296-42, 3296-42 , 915661P	Locknut - ESNA 1/4-20	1	
47	R322-41	322-41	Bolt - Hx HD	1	
48	RP457-2	01-191-0518, 22-12-AJK, 3218-2, 513299, P457-2	Nut - Jam 5/16-18 Zinc	1	
49	R99-3565	99-3565	Nut - Square	1	
50	R106-2661-01	106-2661-01	Plate - Support	1	
51	R106-4154	106-4154	Floorplate Assy	1	
52	R95-8869-03	95-8869, 95-8869-03	Bracket - Traction Pedal	1	
53	R73-0040	73-0040	Washer - Thrust	1	
54	R95-8866	95-8866	Tube- Rocker Arm	1	
55	R95-8861	95-8861	Slide	1	

All original equipment manufacturers names and part numbers are used for identification purposes only, and we are in no way implying that our products are original equipment parts. Prices subject to change without notice.



Replaces Toro Groundsmaster 3500-G Parts



*Traction Unit - Model 30809
Front Platform & Traction Control*

Item No	R&R Part No.	OEM Part No.	Description	Qty Req	Order Quantity
56	R3296-29	1-804256, 3290-357, 3296-29, 915662P	Locknut - 5/16-18 ESNA	1	
57	R453011	01-166-0100, 01-166-0120, 01-166-0270, 01-166-0500, 01-166-0600, 01-166-0620, 132-4593, 2356-3, 237-12, 24-10-AD, 24-11-AD, 24-11-BD, 24-12-AD, 24-12-BD, 30-9310, 32-8190, 3256-24, 3256-3, 3256-36, 3256-4, 453011, 47-9950, 48-9220, 513458, 7-0052	Washer - Flat 3/8 SAE Y/Zinc	3	
58	R65-9940	65-9940	Spring	1	
59	R302-5	21-6010, 302-11, 302-37, 302-47, 302-5, 302-57, 302-58, 302-6, 31-0300, 32-9660, 60-0800, 62-3880, 92-4181	Fitting - Grease	1	

All original equipment manufacturers names and part numbers are used for identification purposes only, and we are in no way implying that our products are original equipment parts. Prices subject to change without notice.



Replaces Toro Groundsmaster 3500-G Parts

*Traction Unit - Model 30809
Front Platform & Traction Control*



Item No	R&R Part No.	OEM Part No.	Description	Qty Req	Order Quantity
60	R95-8893	95-8893	Bar - Deflector	1	
61	R99-3545	99-3545	Spacer	1	
62	R6050-103	48-8010, 48-8030	Washer - Flat	3	
63	R322-10	20-30-AD, 24-7180, 322-10, 322-10 , 3223-6, 513347	Bolt - Hex HD 5/16-18 x 2	2	
64	R2411-41	2411-41	Rod End - Ball Joint	1	
65	R32151-3	32151-3	Ring - Grip	1	
66	R76-8870	105-7280, 76-8870	Lever Damper Assy	1	

All original equipment manufacturers names and part numbers are used for identification purposes only, and we are in no way implying that our products are original equipment parts. Prices subject to change without notice.