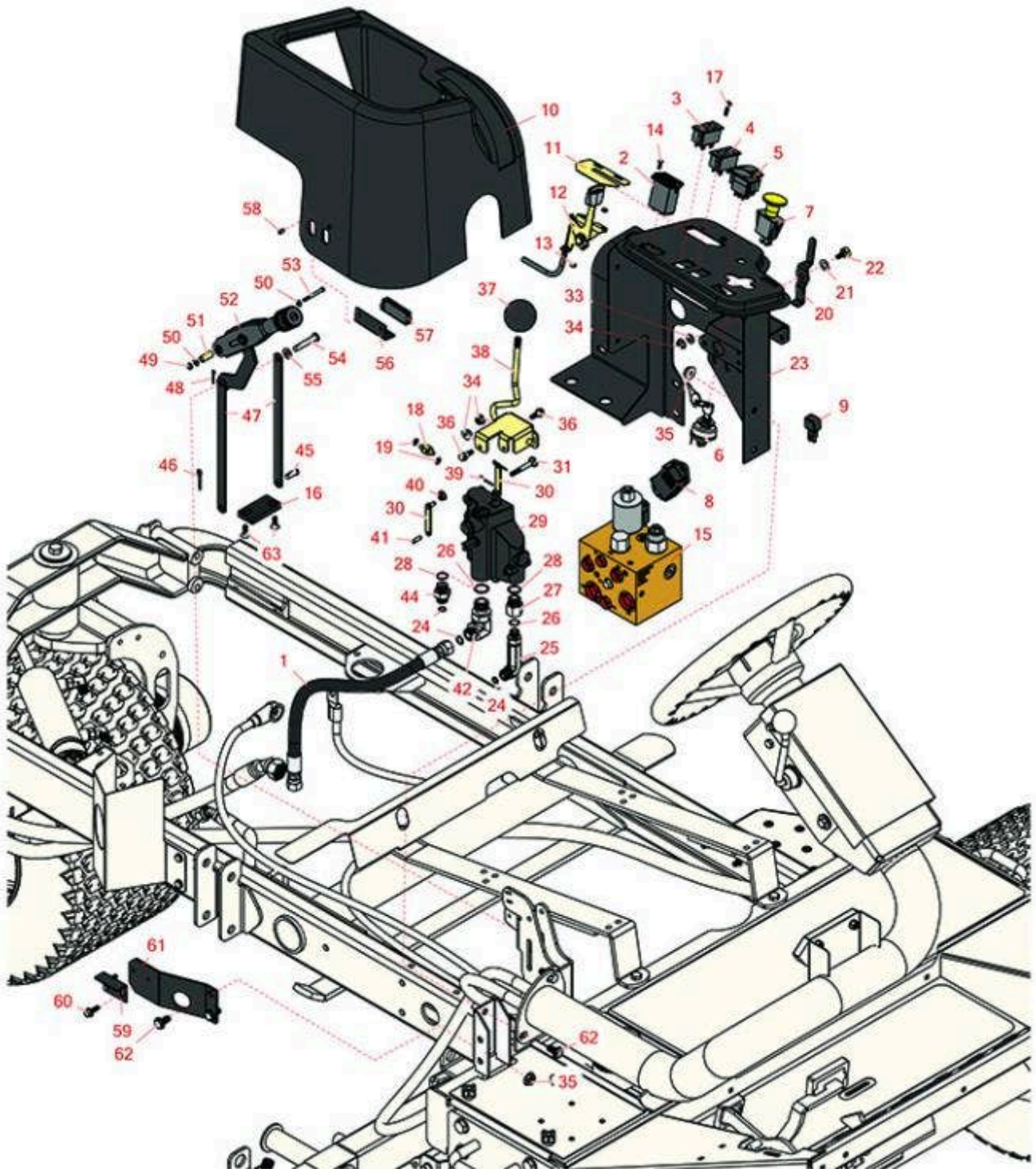




# Replaces Toro Groundsmaster 3500-G Parts

*Traction Unit - Model 30809  
Control Panel & Parking Valve*



All original equipment manufacturers names and part numbers are used for identification purposes only, and we are in no way implying that our products are original equipment parts. Prices subject to change without notice.



# Replaces Toro Groundsmaster 3500-G Parts

Traction Unit - Model 30809  
Control Panel & Parking Valve



Item No	R&R Part No.	OEM Part No.	Description	Qty Req	Order Quantity
---------	--------------	--------------	-------------	---------	----------------

## Hoses

1	<b>R99-3575</b>	99-3575	Hydraulic Hose Assy	1
---	-----------------	---------	---------------------	---

*Tech Note: Fits Models 30826/30849 Only:*

## Gauges and Controls

2	<b>R75-6820</b>	75-6820	Meter - Hour - Quartz	1
---	-----------------	---------	-----------------------	---

3	<b>R100-8071</b>	100-8071	Lamp - Warning	1
---	------------------	----------	----------------	---

4	<b>R100-8070</b>	100-8070	Lamp - Warning	1
---	------------------	----------	----------------	---

5	<b>R95-8999</b>	95-8999	Switch - Headlight	1
---	-----------------	---------	--------------------	---

6	<b>R104-2541</b>	104-2541, 88-9830	Switch - Key 6 Lead 5/8 Mt.	1
---	------------------	----------------------	-----------------------------	---

7	<b>R93-9999</b>	93-9999	Switch - Pto	1
---	-----------------	---------	--------------	---

8	<b>RX1709565660</b>	98-7611, 99-3463, 99-7611	Kubota Controller	1
---	---------------------	---------------------------------	-------------------	---

9	<b>R100-4918</b>	100-4818, 100-4918	Diode	1
---	------------------	-----------------------	-------	---

## Other Parts Available

10	<b>R95-8707</b>	95-8707	Cover - Dash	1
----	-----------------	---------	--------------	---

11	<b>R104-0421</b>	104-0421	Plate - Throttle Stop	1
----	------------------	----------	-----------------------	---

12	<b>R110-8750</b>	110-8750, 95-8855	Throttle Control	1
----	------------------	----------------------	------------------	---

*Tech Note: Fits Models 30839-2006-2007/30826-2006-2007:*

12	<b>R110-8795</b>	110-8759, 110-8795	Cable - Throttle	1
----	------------------	-----------------------	------------------	---

*Tech Note: Fits All Models-2008 & Newer:*

All original equipment manufacturers names and part numbers are used for identification purposes only, and we are in no way implying that our products are original equipment parts. Prices subject to change without notice.



# Replaces Toro Groundsmaster 3500-G Parts

Traction Unit - Model 30809  
Control Panel & Parking Valve



Item No	R&R Part No.	OEM Part No.	Description	Qty Req	Order Quantity
13	<b>R3290-148</b>	3290-148	Nut - 10-24 Fl Lock	2	
14	<b>R32144-18</b>	32144-18	Screw - Hex HD	2	
15	<b>R115-3486</b>	115-3486	Manifold Block Assy	1	
16	<b>R95-8684</b>	95-8684	Pad-Bumper	12	
17	<b>R32105-13</b>	32105-13	Screw - Hx Was HD 10-32 x 3/4	2	
<i>Tech Note: Fits Model 30839-2006-2007/30826-2006-2007:</i>					
17	<b>R3290-134</b>	3290-134	Screw - 10-24x5/8 Hh Ms	2	
<i>Tech Note: Fits All Models-2008 &amp; Newer:</i>					
18	<b>R95-8638</b>	95-8638	Trunnion - Valve - Ac	1	
19	<b>R32151-106</b>	32151-106, 93-3988	Ring-Retaining	2	
20	<b>R99-3401-03</b>	99-3401, 99-3401-03	Lever - Valve - Lock	1	
21	<b>R3290-477</b>	108473, 3290-477	Washer - Spring Wave	1	
22	<b>R63-3410</b>	63-3410	Screw - Shoulder	1	
23	<b>R104-5190-03</b>	104-5190-03	Panel - Control	1	
24	<b>R237-22</b>	107-8844, 237-22, 237-78	O-Ring	3	
25	<b>R69-4320</b>	69-4320	Hydraulic Fitting - 90 Deg	1	
26	<b>R237-42</b>	237-42, 31-4160	O-Ring	2	
27	<b>R353-397</b>	353-397	Reducer - Adapter	1	
28	<b>R237-79</b>	237-79	O-Ring	2	

All original equipment manufacturers names and part numbers are used for identification purposes only, and we are in no way implying that our products are original equipment parts. Prices subject to change without notice.



# Replaces Toro Groundsmaster 3500-G Parts

Traction Unit - Model 30809  
Control Panel & Parking Valve



Item No	R&R Part No.	OEM Part No.	Description	Qty Req	Order Quantity
29	<b>R95-8689</b>	95-8689	Valve Assy - Control - Single Spool	1	
<i>Tech Note: Fits Models 30826/30849 Only:</i>					
29	<b>R95-8581</b>	95-8581	Valve- Assy - 2 Spool	1	
<i>Tech Note: Fits Models 30839/30807/30843 Only:</i>					
30	<b>R95-8634</b>	95-8634	Link	2	
31	<b>R3230-33</b>	3230-33	Screw - Carriage	2	
33	<b>R3256-22</b>	24-9-BD, 3-1032, 3256-1, 3256-22, 93-0954, 93-0989	Washer - Flat 1/4 Yellow	1	
34	<b>R32128-32</b>	32128-32	Locknut - 1/4-20 Flanged	3	
35	<b>R32128-43</b>	30-8990, 32128-43, 3290-357	Nut - Flanged Whiz - 3/8-16	6	
36	<b>R42-3560</b>	42-3560	Bolt-Shoulder	2	
37	<b>R233-42</b>	1-603175, 120-9752, 233-42, 233-47	Knob	1	
38	<b>R95-8692</b>	95-8692	Lever Assy	1	
<i>Tech Note: Fits Models 30826/30849 Only:</i>					
39	<b>R3272-5</b>	28-8-D, 3272-5	Pin-Cotter	2	
40	<b>R32128-33</b>	32128-33	Nut - 1/4-20 Flanged Serr	2	
41	<b>R58-3830</b>	58-3830	Pin - Clevis 3/16 x 3/4	2	

All original equipment manufacturers names and part numbers are used for identification purposes only, and we are in no way implying that our products are original equipment parts. Prices subject to change without notice.



# Replaces Toro Groundsmaster 3500-G Parts

*Traction Unit - Model 30809  
Control Panel & Parking Valve*



Item No	R&R Part No.	OEM Part No.	Description	Qty Req	Order Quantity
42	<b>R340-77</b>	340-100, 340-77, 95-7889	Hydraulic Fitting	1	
44	<b>R340-3</b>	340-3	Hydraulic Fitting - Adapter Connector	1	
45	<b>R283-62</b>	283-62	Pin - Clevis 5/16 x 3/4	1	
46	<b>R3272-10</b>	01-151-0120, 105-7512, 3272-10, N/A	Pin - Cotter 1/8 x 3/4	1	
47	<b>R104-4628-03</b>	104-4628, 104-4628-03	Link - Parking Brake	2	
48	<b>R1023-4</b>	01-151-0150, 1023-4, 19-6220, 214-14, 215-54, 28-9-D, 3272-4, 3272-6, 513567, 932008P	Pin - Cotter 3/32 x 3/4	1	
49	<b>R3296-9</b>	32127-17, 3296-9	Locknut - Comb	1	
50	<b>R150426</b>	3256-21	Washer - 8 SAE	2	
51	<b>R87-4710</b>	87-4710	Spacer - Parking Brake	1	
52	<b>R104-4817</b>	104-4817	Lever - Brake	1	
53	<b>R32105-9</b>	32105-9	Screw	1	
54	<b>R94-3829</b>	94-3829	Pin - Clevis	1	

All original equipment manufacturers names and part numbers are used for identification purposes only, and we are in no way implying that our products are original equipment parts. Prices subject to change without notice.



# Replaces Toro Groundsmaster 3500-G Parts

*Traction Unit - Model 30809  
Control Panel & Parking Valve*



Item No	R&R Part No.	OEM Part No.	Description	Qty Req	Order Quantity
55	<b>R453009</b>	01-166-0400, 24-10-BD, 24-9-AD, 32-9650, 3256-2, 3256-23, 3256-3, 3256-67, 3290-217, 3556-3, 4-2390, 7-0152	Washer - Flat 5/16 SAE	1	
56	<b>R95-8763</b>	95-8763	Bracket - Hold Down	2	
57	<b>R58-4250</b>	58-4250, 99-3497	Catch - Magnetic	2	
58	<b>R3269-5</b>	3269-5	Rivet - Pop	2	
59	<b>R95-8765</b>	95-8765	Bracket - Magnet Strike	2	
60	<b>R32144-10</b>	32140-81, 32144-10, 32144-3, 34-140-AMVD	Bolt - 1/4-20 x 3/4 Serrated Hx Wshr	4	
61	<b>R95-8764-03</b>	95-8764, 95-8764-03	Support - Magnet	1	
62	<b>R3234-1</b>	321-11, 3234-1	Bolt - Flanged Serrated Hex HD 3/8-16 x 3/4	6	
63	<b>R3289-4</b>	01-150-1070, 01-158-0180, 3289-4, 99-7334	1/4-20 x 3/4 Flathead Skt Cap Scr	98	

All original equipment manufacturers names and part numbers are used for identification purposes only, and we are in no way implying that our products are original equipment parts. Prices subject to change without notice.