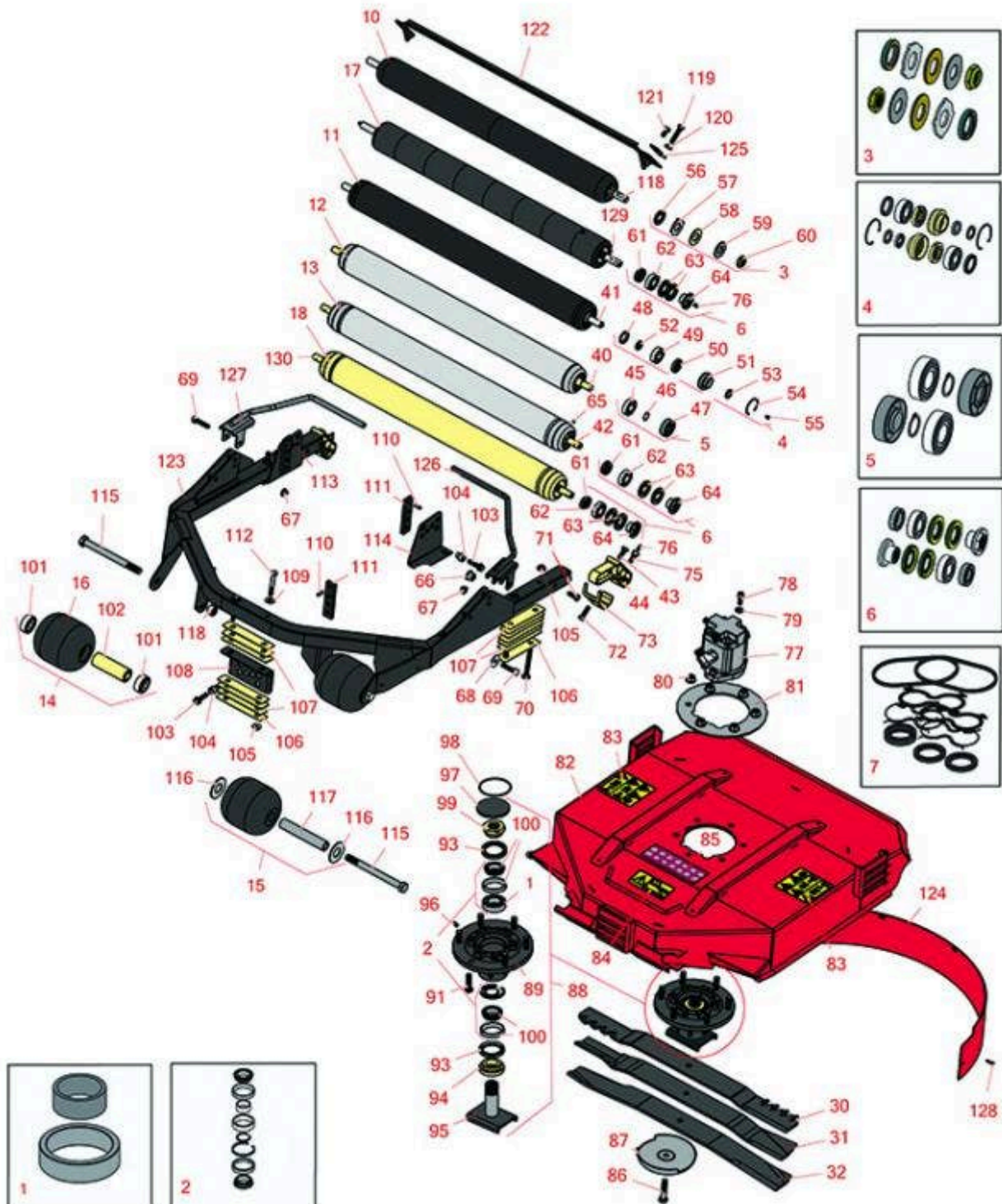




Replaces Toro Groundsmaster 3500-G

Parts

Rotary Cutting Unit
27in Unit - Model 30822



All original equipment manufacturers names and part numbers are used for identification purposes only, and we are in no way implying that our products are original equipment parts. Prices subject to change without notice.



Replaces Toro Groundsmaster 3500-G

Parts

Rotary Cutting Unit
27in Unit - Model 30822



Item No	R&R Part No.	OEM Part No.	Description	Qty Req	Order Quantity
---------	--------------	--------------	-------------	---------	----------------

Overhaul Kits

1	R100-5704	100-5704	Spacer - Set Fits R100-5703	1	
---	------------------	----------	-----------------------------	---	--

2	R100-5703	100-5703	Bearing - w/Spacer Assy	1	
---	------------------	----------	-------------------------	---	--

3	R101399		Overhaul Kit - UHMW 2 Pc Roller	1	
---	----------------	--	---------------------------------	---	--

Tech Note: Fits all R&R 2-1/2" - 3-1/2" Dia. Black UHMW Plastic Rollers that do not use ball bearings.. Includes 2 ea.: R1503230 Star Washers, R1503470 Seals, R150333 Thrust Washers, R3296-15 Locknuts, R1503471 Bronze Thrust Washers:

4	R106-9606	106-9606	Overhaul Kit - Roller	1	
---	------------------	----------	-----------------------	---	--

Tech Note: Include 2 ea: R343667 Bearings, R253-70 Seals, R32120-62 Retaining Rings, R93-1251 Seals, R93-1252 Seals, R93-2931 Washers, R93-3007 Seals:

5	R107-1595	107-1595	Overhaul Kit - Roller	1	
---	------------------	----------	-----------------------	---	--

Tech Note: Includes 2 ea.: R251-347 Bearings, R32120-15 Snap Rings & R150614 Seals:

6	R114-5430	114-5430	Overhaul Kit - Roller	1	
---	------------------	----------	-----------------------	---	--

Tech Note: Includes 4 ea.: R112-7494 Seals; 2 ea.: R302-5 Grease Zerks, R114-3717 Seals, R112-5290 Bearings & R114-3745 Locknuts:

7	R117-0235	117-0235	Seal Kit - Fits R117-5141 Hyd Motor	1	
---	------------------	----------	-------------------------------------	---	--

R&R Rollers

10	R1013902		Roller - Smooth UHMW Polyethylene	1	
----	-----------------	--	-----------------------------------	---	--

Tech Note: Machined from solid UHMW, this low maintenance roller uses a 1" solid stainless steel shaft and requires no grease. UHMW material prevents build-up of debris.:

11	R107-1996	107-1996, 112-5273, 112-5291	Roller - Regreasable	1	
----	------------------	------------------------------------	----------------------	---	--

12	R105-6772	105-1227, 105-6772	Roller - Smooth 3in	1	
----	------------------	-----------------------	---------------------	---	--

All original equipment manufacturers names and part numbers are used for identification purposes only, and we are in no way implying that our products are original equipment parts. Prices subject to change without notice.



Replaces Toro Groundsmaster 3500-G Parts

Rotary Cutting Unit
27in Unit - Model 30822



Item No	R&R Part No.	OEM Part No.	Description	Qty Req	Order Quantity
13	R112-5265	112-5265, 112-5272	Roller Assy - Regreasable	1	
14	R136-2908	104-1092, 115-3418, 136-2908	Roller Assy - Cast Iron	2	
15	R150495		Roller - Smooth UHMW Polyethylene Front 5 in Dia	2	
16	R104-1093	104-1093	Roller - Cast Iron	2	
17	R1013910		Roller - Fusion Smooth UHMW Polyethylene	1	
<i>Tech Note: Machined from solid UHMW plastic that prevents build-up of debris. This roller turns on precision stainless ball bearings.:</i>					
18	R137-6141	137-6141	Roller Assy - with Hardened Shaft	1	
31	R108-9026-03	108-9026-03	Mower Blade - 27 in Combo	1	
32	R100-5754-03	100-5754, 100-5754-03, 105-9810-03	Mower Blade	1	
Other Part Available					
40	R104-9480	104-9480	Shaft - Roller	1	
41	R107-1984	107-1984	Shaft - Roller	1	
42	R112-5266	112-5266	Shaft- Long - Rear Roller	1	
43	R323-6	01-150-0010, 01-178-0608, 20-47-AD, 20-47-AGD, 3224-2, 323-6, 49-3510, 908034P, 908332	Bolt - Hex HD 3/8-16 x 1 GR5 YZ	2	

All original equipment manufacturers names and part numbers are used for identification purposes only, and we are in no way implying that our products are original equipment parts. Prices subject to change without notice.



Replaces Toro Groundsmaster 3500-G Parts

Rotary Cutting Unit
27in Unit - Model 30822



Item No	R&R Part No.	OEM Part No.	Description	Qty Req	Order Quantity
44	R112-5268	100-5768, 100-5768-01, 104-9487, 105-3991, 112-5268	Mount - Roller - Rotary Deck	2	
45	R251-347	251-347, 72-5690	Bearing - Ball	2	
46	R32120-15	32120-15	Ring - Snap	2	
47	R150614	99-3842	Seal	2	
48	R93-3007	93-3007	Seal	2	
49	R343667	109966, 251-6, 38-7820	Bearing - Ball	2	
50	R93-1251	93-1251	Seal	2	
51	R93-1252	93-1252	Seal - Outer	2	
52	R253-70	253-70	Seal	2	
53	R93-2931	93-2931	Washer - Roller Seal	2	
54	R32120-62	32120-62	Ring - Retaining	2	
55	R1851	107-1997	Fitting - Grease - Flush	2	
56	R1503470		Seal - Inner Wiper	2	
57	R1503230		Washer - Thrust Outer Keyed	2	
58	R1503471		Washer - Thrust SAE660 Bronze	2	
59	R150333		Washer - Flat Keyed Outer SS	2	
60	R3296-15	116-7306, 32118-5, 32127-23, 32127-47, 3296-15	Locknut - 3/4-16 Nylon Jam	2	

All original equipment manufacturers names and part numbers are used for identification purposes only, and we are in no way implying that our products are original equipment parts. Prices subject to change without notice.



Replaces Toro Groundsmaster 3500-G

Parts

Rotary Cutting Unit
27in Unit - Model 30822



Item No	R&R Part No.	OEM Part No.	Description	Qty Req	Order Quantity
61	R114-3717	114-3717	Seal	2	
62	R112-5290	112-5290, 251--346, 251-346, 72-5430	Bearing - Stainless	2	
63	R112-7494	112-7494	Seal	4	
64	R114-3745	114-3745, 114-5411	Locknut - Bearing - Stainless	2	
65	R150690	108-0989	Screw - Set 1/4-20 x 1/4	2	
66	R95-8803	95-8803	Bushing - Flange	2	
67	R104-8301	104-8301, 104-9301, 109-6658, 133-7570	Locknut - 3/8-16 Nylon Flanged	2	
68	R93-8806	93-8806	Washer-Hardened	2	
69	R323-11	01-150-1440, 01-178-0618, 20-52-AD, 3224-7, 323-11	Bolt - 3/8-16 x 2 1/4 GR5	6	
70	R3231-9	3231-9	Bolt - Carriage 3/8-16 x 2 3/4"	4	
71	R3234-11	3234-11	Bolt - Hex Washer HD	4	
72	R400264	01-150-0180, 01-178-0610, 20-48-AD, 20-48-AGD, 32-9160, 3224-3, 323-29, 323-7, 400264, 908035P	Bolt - Hex HD 3/8-16 x 1-1/4	2	
73	R107-7816	107-7816	Bracket-Skid	2	

All original equipment manufacturers names and part numbers are used for identification purposes only, and we are in no way implying that our products are original equipment parts. Prices subject to change without notice.



Replaces Toro Groundsmaster 3500-G Parts

Rotary Cutting Unit
27in Unit - Model 30822



Item No	R&R Part No.	OEM Part No.	Description	Qty Req	Order Quantity
75	R112-5270	112-5270	Screw Assy - Roller Shaft	2	
76	R302-5	21-6010, 302-11, 302-37, 302-47, 302-5, 302-57, 302-58, 302-6, 31-0300, 32-9660, 60-0800, 62-3880, 92-4181	Fitting - Grease	2	
77	R117-5141	105-9820, 105-9872, 117-5141	Hydraulic Motor	1	
78	R3274-7	3247-7, 3274-7	Bolt - Soc HD Cap 3/8-16 x 1	2	

Tech Note: 2002 to 2012 only:

All original equipment manufacturers names and part numbers are used for identification purposes only, and we are in no way implying that our products are original equipment parts. Prices subject to change without notice.



Replaces Toro Groundsmaster 3500-G

Parts

Rotary Cutting Unit
27in Unit - Model 30822



Item No	R&R Part No.	OEM Part No.	Description	Qty Req	Order Quantity
79	R453011	01-166-0100, 01-166-0120, 01-166-0270, 01-166-0500, 01-166-0600, 01-166-0620, 132-4593, 2356-3, 237-12, 24-10-AD, 24-11-AD, 24-11-BD, 24-12-AD, 24-12-BD, 30-9310, 32-8190, 3256-24, 3256-3, 3256-36, 3256-4, 453011, 47-9950, 48-9220, 513458, 7-0052	Washer - Flat 3/8 SAE Y/Zinc	2	
<i>Tech Note: 2002 to 2012 only:</i>					
80	R32128-49	32128-49	Nut - 1/2-13 Hex Flange	6	
81	R104-1051-03	104-1051-03	Plate- Spindle	1	
82	R127-6389	115-3479, 127-6389	Deck Chamber Assy	1	
83	R117-4764	117-4764	Decal - Danger	2	
84	R93-7818	93-7818	Decal - Blade Torque	1	
85	R121-3627	104-1086, 121-3627	Decal - HOC	1	
86	R92-5816	92-5816	Bolt - Hex HD 1/2-20 x 2-1/4	1	

All original equipment manufacturers names and part numbers are used for identification purposes only, and we are in no way implying that our products are original equipment parts. Prices subject to change without notice.



Replaces Toro Groundsmaster 3500-G Parts

Rotary Cutting Unit
27in Unit - Model 30822



Item No	R&R Part No.	OEM Part No.	Description	Qty Req	Order Quantity
87	R72-9361	27-1000, 27-1001, 72-9360, 72-9361	Cup - Anti-Scalp	1	
88	R115-3435	100-5700, 115-3435	Spindle Assy	1	
89	R115-3434	100-5701, 115-3434	Housing - Spindle	1	
91	R10-6830	10-6830, 75-9440	Stud - Wheel 1/2-20 x 1 3/4	6	
<i>Tech Note: 2012 & Newer:</i>					
91	R325-5	01-150-0250, 01-178-0810, 19-8000, 20-86-AGD, 3226-1, 325-5, 513375	Bolt - Hex HD 1/2-13 x 1-1/4	6	
<i>Tech Note: Up to 2012:</i>					
93	R253-154	253-154	Seal - Spindle	2	
94	R92-9800	69-6950, 69-6980, 92-9800	Spacer - Spindle	1	
94	R138-6416	138-6416	Spacer - Spindle Shaft	1	
95	R100-5705	100-5705	Spindle Assy	1	
96	R302-62	302-62	Fitting - Grease - Extended Shank	2	
97	R94-2703	94-2703	Plug - Plastic Spindle Housing	1	
98	R237-161	237-161	O-Ring	1	
99	R100-5709	100-5709	Nut - Special Spindle	1	

All original equipment manufacturers names and part numbers are used for identification purposes only, and we are in no way implying that our products are original equipment parts. Prices subject to change without notice.



Replaces Toro Groundsmaster 3500-G Parts

Rotary Cutting Unit
27in Unit - Model 30822



Item No	R&R Part No.	OEM Part No.	Description	Qty Req	Order Quantity
100	R49-8320	26-1730, 49-8320	Bearing Assy - Spindle Set	2	
<i>Tech Note: Includes Retaining Rings, Spacers, Bearings & Cups:</i>					
101	R108-9017	108-9017, 120-3366	Bearing-Stainless	4	
102	R100-5762	100-5762	Spacer - Bearing Roller	2	
103	R3234-24	3234-24, 3234-8, 66-9301	Bolt - Hex Ser Was HD 3/8-16 x 1-1/4	6	
104	R105-9226	105-9226	Spacer-HOC	6	
104	R121-3575	121-3575	Spacer - HOC	6	
105	R32128-43	30-8990, 32128-43, 3290-357	Nut - Flanged Whiz - 3/8-16	6	
106	R104-4641	104-4641	Shim - HOC - .030	3	
107	R100-5799	100-5799	Shim - HOC .060	18	
108	R104-1052-03	104-1052-01, 104-1052-03	Bracket- HOC - Front	1	
109	R80-6990	80-6990	Washer - Hardened	2	
110	R158	32121-3	Pin - Roll 3/16 x 3/4	3	
111	R105-9225	105-9225	Plate Assy - HOC	3	
111	R136-2921	136-2921	HOC Plate Assy	3	

All original equipment manufacturers names and part numbers are used for identification purposes only, and we are in no way implying that our products are original equipment parts. Prices subject to change without notice.



Replaces Toro Groundsmaster 3500-G Parts

Rotary Cutting Unit
27in Unit - Model 30822



Item No	R&R Part No.	OEM Part No.	Description	Qty Req	Order Quantity
112	R101526	01-150-0970, 01-178-0620, 101526, 20-53-AGD, 321-11, 3224-8, 323-11, 323-12, 323-31, 323-4, 323-47	Bolt - Hex HD 3/8-16 x 2-1/2 GR5	2	
113	R100-5797-03	100-5797-01, 100-5797-03	Bracket - HOC - RH	1	
114	R104-4624-03	104-4624-01, 104-4624-03	Bracket - H.O.C. - LH	1	
115	R327-15	327-15	Bolt - Axle	2	
116	R150497	R7R ONLY	Washer - Fits R150495 Only	2	
117	R150496		Wear Sleeve - Fits R150495 Only	1	
118	R1013831		Shaft - 1in Stainless Steel	1	
119	R323-53	323-53, 57-3210	Bolt - Hex HD 3/8-16 x 1-3/4	2	
120	R3217-7	01-188-0616, 1441, 22-13-AJD, 3217-7, 513296, 513415, 513425, 915113P	Nut - 3/8-16 Hex Plated	2	

All original equipment manufacturers names and part numbers are used for identification purposes only, and we are in no way implying that our products are original equipment parts. Prices subject to change without notice.



Replaces Toro Groundsmaster 3500-G Parts

Rotary Cutting Unit
27in Unit - Model 30822



Item No	R&R Part No.	OEM Part No.	Description	Qty Req	Order Quantity
121	R400258	01-150-0800, 01-178-0600, 01-178-0606, 20-45-AD, 31-0200, 31-9910, 3224-1, 323-4, 400258	Bolt - Hex HD 3/8-16 x 3/4	2	
122	R104-9492-03	104-9492-03	Scraper - Rear Roller	1	
123	R100-5780-03	100-5780-01, 100-5780-03	Deck Frame Assy	1	
124	R108-9025-01	108-9025-01	Baffle - Mulching - 27 in Deck	1	
125	R105-1230-03	105-1230-03	Plate - Scraper	2	
126	R112-9902-03	112-9902-03	Foot Guard Assy - LH	1	
127	R112-9901-03	112-9901-03	Foot Guard Assy - RH	1	
128	R3274-31	3274-31, 3274-68, 46-8560	Screw - Button HD Soc CS 1/4-20 x 5/8	5	
129	R1013911	1013911	Shaft	1	
130	R117-5100	117-5100	Shaft- Long - Rear Roller - Hardened	1	

All original equipment manufacturers names and part numbers are used for identification purposes only, and we are in no way implying that our products are original equipment parts. Prices subject to change without notice.