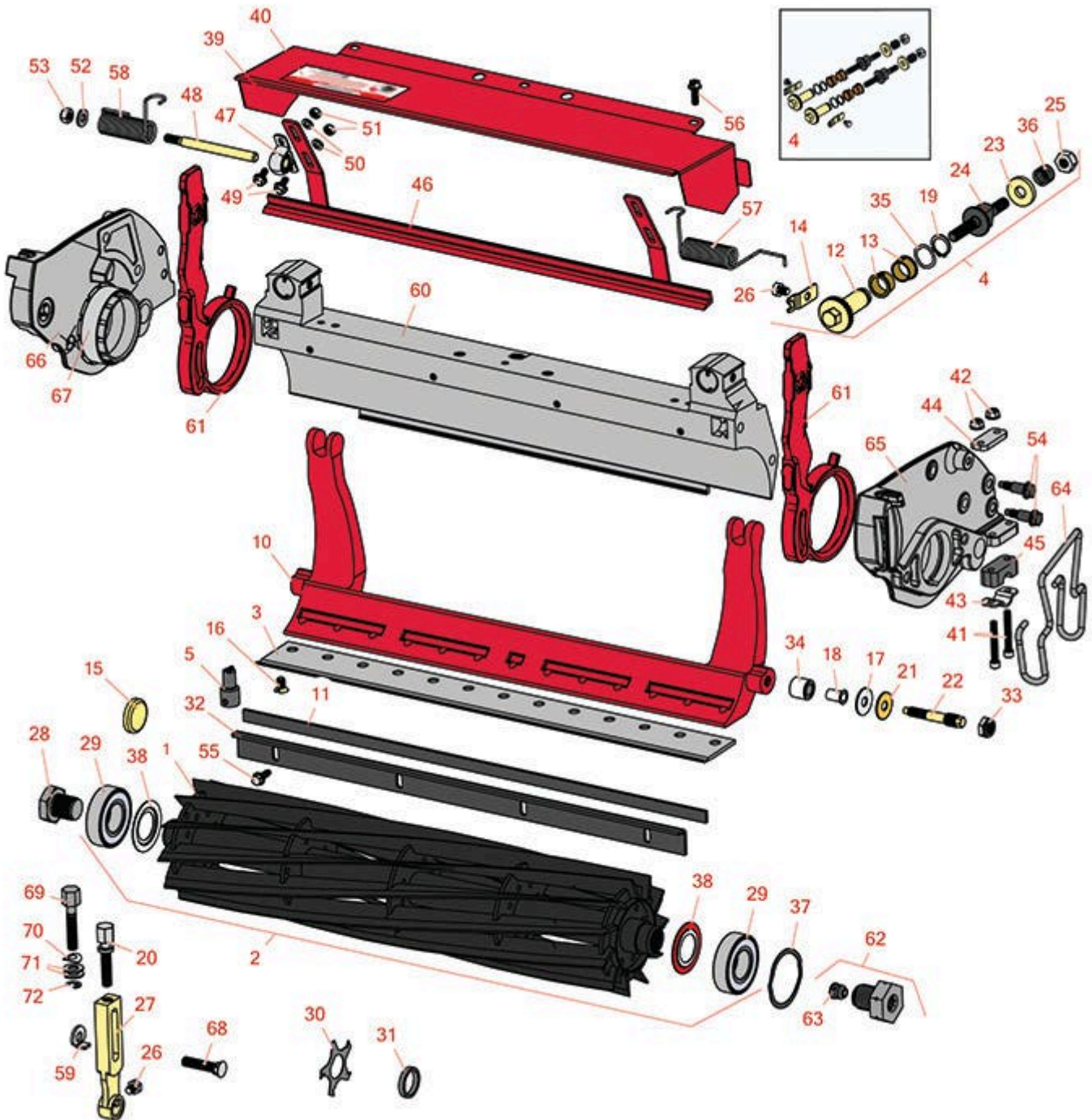




# Replaces Toro Greensmaster TriFlex

## 3320 Parts

DPA Cutting Unit - Models 04651, 04653 & 04655  
Reel & Bedknife



All original equipment manufacturers names and part numbers are used for identification purposes only, and we are in no way implying that our products are original equipment parts. Prices subject to change without notice.



# Replaces Toro Greensmaster TriFlex

## 3320 Parts

DPA Cutting Unit - Models 04651, 04653 & 04655

Reel & Bedknife



Item No	R&R Part No.	OEM Part No.	Description	Qty Req	Order Quantity
---------	--------------	--------------	-------------	---------	----------------

### R&R Reels, Lifetime Guaranteed

1	<b>R119-4103</b>	119-4103	Reel - 8 Blade	1	
---	------------------	----------	----------------	---	--

1	<b>R127-2200</b>	127-2200	Reel - 8 Blade Low Drag	1	
---	------------------	----------	-------------------------	---	--

*Tech Note: Low Drag:*

1	<b>R132-7340</b>	132-7340	Reel - 8 Blade Razor Series Low Drag	1	
---	------------------	----------	--------------------------------------	---	--

*Tech Note: Uses special high alloy premium steel reel blades:*

1	<b>R119-4104</b>	119-4104	Reel - 11 Blade	1	
---	------------------	----------	-----------------	---	--

1	<b>R127-2201</b>	127-2201	Reel - 11 Blade Low Drag	1	
---	------------------	----------	--------------------------	---	--

*Tech Note: Low Drag:*

1	<b>R132-7341</b>	132-7341	Reel - 11 Blade Razor Series Low Drag 21	1	
---	------------------	----------	--	---	--

*Tech Note: Uses special high alloy premium steel reel blades:*

1	<b>R119-4105</b>	119-4105	Reel - 14 Blade	1	
---	------------------	----------	-----------------	---	--

1	<b>R127-2202</b>	127-2202	Reel - 14 Blade Low Drag 21	1	
---	------------------	----------	-----------------------------	---	--

*Tech Note: Low Drag:*

1	<b>R132-7342</b>	132-7342	Reel - 14 Blade Razor Series Low Drag 21	1	
---	------------------	----------	--	---	--

*Tech Note: Uses special high alloy premium steel reel blades:*

### R&R Razor Reels, Lifetime Guaranteed

2	<b>R137-8511</b>	137-8511	Reel - 8 Blade Razor Series Low Drag w/Bearings and Seals 21	1	
---	------------------	----------	--	---	--

*Tech Note: Uses special high alloy premium steel reel blades:*

2	<b>R137-8512</b>	137-8512	Reel - 11 Blade Razor Series Low Drag w/Bearings and Seals 21	1	
---	------------------	----------	---	---	--

*Tech Note: Uses special high alloy premium steel reel blades:*

All original equipment manufacturers names and part numbers are used for identification purposes only, and we are in no way implying that our products are original equipment parts. Prices subject to change without notice.



# Replaces Toro Greensmaster TriFlex 3320 Parts

DPA Cutting Unit - Models 04651, 04653 & 04655  
Reel & Bedknife



Item No	R&R Part No.	OEM Part No.	Description	Qty Req	Order Quantity
2	<b>R137-8513</b>	137-8513	Reel - 14 Blade Razor Series Low Drag w/Bearings and Seals 21	1	

*Tech Note: Uses special high alloy premium steel reel blades:*

## **R&R Bedknife, Lifetime Guaranteed**

3	<b>R108-4302</b>	108-4301, 108-4302	Bedknife - Tournament Cut Extended .125 - .500 HOC	1	
3	<b>R108-4303</b>	104-7720, 108-4303	Bedknife - Micro Cut Extended .062 - .187 HOC	1	
3	<b>R150466</b>	63-8600, 64-6393, 94-6393	Bedknife - Super Thick .312 - 1.00 HOC	1	
3	<b>R93-4262</b>	65-8250, 93-4262, 93-4263	Bedknife - Micro Cut .062 - .187 HOC	1	
3	<b>R93-4264</b>	57-4960, 63-8470, 93-4264	Bedknife - Low Cut .187 - 1.00 HOC	1	
3	<b>R93-4263</b>	63-8560, 66-9320, 93-4263, 93-6039	Bedknife - Tournament Cut .125 - .500 HOC	1	
3	<b>R94-6392</b>	62-2500, 94-6392	Bedknife - High Cut .312 - 1.00 HOC	1	
3	<b>R63-8610</b>	63-8610	Bedknife - Fairway Cut .375 - 1.00 HOC	1	
3	<b>R94-6396</b>	10-4900, 54-9150, 94-6396, Oct-00	Bedknife - High Cut 5/16"-1" HOC	1	
3	<b>R150462</b>	63-8610, 94-6396	Bedknife - 7 Hole Thick 5/16	1	

## **R&R Razor Tool Steel Bedknives, Lifetime Guaranteed**

All original equipment manufacturers names and part numbers are used for identification purposes only, and we are in no way implying that our products are original equipment parts. Prices subject to change without notice.



# Replaces Toro Greensmaster TriFlex 3320 Parts

DPA Cutting Unit - Models 04651, 04653 & 04655  
Reel & Bedknife



Item No	R&R Part No.	OEM Part No.	Description	Qty Req	Order Quantity
3	<b>R115-1881</b>	115-1881	Bedknife - Razor Tool Steel - 21 Tournament Cut .125 - .500 HOC	1	
<i>Tech Note: Razor Tool Steel Bedknives are constructed from high grade tool steel for extended life and optimum cut.:</i>					
3	<b>R115-1880</b>	115-1880	Bedknife - Razor Tool Steel - 21 Micro Cut .062 - .187 HOC	1	
<i>Tech Note: Razor Tool Steel Bedknives are constructed from high grade tool steel for extended life and optimum cut.:</i>					
3	<b>R150492</b>	150492	Bedknife - Razor Tool Steel - 21 Micro Cut Ext	1	
<i>Tech Note: Razor Tool Steel Bedknives are constructed from high grade tool steel for extended life and optimum cut.:</i>					
3	<b>R112-7475</b>	112-7475	Bedknife - Razor Tool Steel - 22 x 3/8 Fairway	1	
<i>Tech Note: Razor Tool Steel Bedknives are constructed from high grade tool steel for extended life and optimum cut.:</i>					
<b>Overhaul Kit</b>					
4	<b>R121-2637</b>	121-2637	Overhaul Kit - DPA Adjusters	1	
<b>Service Tools</b>					
5	<b>R51-0880</b>	51-0880	Bedknife Screw Driver Tool	0	
<b>Other Parts Available</b>					
10	<b>R106-2648-01</b>	106-2648-01	Bed Bar	1	
10	<b>R99-3794-01</b>	99-3794-01, 99-3794-03	Bed Bar - Aggressive	1	
11	<b>R106-2619</b>	106-2619	Seal - Strip	1	
12	<b>R106-5363</b>	106-5363	Shaft - Adjusting - Bed Bar - Stainless	2	
13	<b>R106-5344</b>	106-5344	Bushing - Flanged and Keyed	4	
14	<b>R99-2097</b>	99-2097	Detent - Bed Bar Adjuster	2	

All original equipment manufacturers names and part numbers are used for identification purposes only, and we are in no way implying that our products are original equipment parts. Prices subject to change without notice.



# Replaces Toro Greensmaster TriFlex 3320 Parts

DPA Cutting Unit - Models 04651, 04653 & 04655  
Reel & Bedknife



Item No	R&R Part No.	OEM Part No.	Description	Qty Req	Order Quantity
15	<b>R105-5708</b>	105-5708, 121-46009, 121-4609	Plug - Expansion	1	
16	<b>R119-4151</b>	119-4151	Screw - Bedknife 5/16-18 x 17/32	13	
17	<b>R52-2900</b>	52-2900	Washer - Nylon	4	
18	<b>R52-2890</b>	52-2890	Bushing - Flanged	2	
19	<b>R32120-93</b>	32120-93	Snap Ring - HD	2	
20	<b>R110-7352</b>	110-7352	Screw - HOC 2 5/8 Stainless	2	
21	<b>R52-2860</b>	119-4150, 52-2860	Washer - Bed Bar Pivot	4	
22	<b>R117-9493</b>	117-9493	Bolt - Bed Bar - Hardened	2	
23	<b>R119-4155</b>	119-4155	Washer - Hardened	2	
24	<b>R115-7039</b>	115-7039	Screw - Adjuster - Bedbar	2	
<i>Tech Note: Ser# 316000001-999999999:</i>					
24	<b>R137-6130</b>	137-6130	Screw - Adjuster - Hardened - Bedbar	2	
<i>Tech Note: Ser# 405700000-999999999:</i>					
25	<b>R3296-48</b>	119-4039, 32146-7, 3296-34, 3296-48	Locknut - 7/16-14 ESNA	2	
26	<b>R114-9396</b>	114-9396, 119-4067	Bolt - Hex HD 5/16-18 x 3/8	4	
27	<b>R115-7041</b>	115-7041	Bracket - Front Roller 5 1/4 in	2	
28	<b>R115-7263</b>	115-7263	Bolt - Bearing Lock	1	
29	<b>R115-3296</b>	115-3296	Bearing	2	
<i>Tech Note: Ser# 316000001-999999999:</i>					

All original equipment manufacturers names and part numbers are used for identification purposes only, and we are in no way implying that our products are original equipment parts. Prices subject to change without notice.



# Replaces Toro Greensmaster TriFlex 3320 Parts

DPA Cutting Unit - Models 04651, 04653 & 04655  
Reel & Bedknife



Item No	R&R Part No.	OEM Part No.	Description	Qty Req	Order Quantity
29	<b>R140-5510</b>	140-5510	Bearing - Sealed Stainless	2	
<i>Tech Note: Ser# 408000000-999999999:</i>					
30	<b>R110-2343</b>	110-2343	Groomer Blade - Carbide Tipped - Helix 1.5mm	42	
31	<b>R70-1350</b>	70-1350	Spacer - 1/4 Fits Groomer Shaft	82	
32	<b>R115-3303-03</b>	115-3303-03	Bar - Cutoff	1	
33	<b>R3296-28</b>	119-4154, 140-9234, 32127-34, 32128-7, 32128-8, 32136-7, 3296-28	Nut - 1/2-20 ESNA Jam	2	
34	<b>R119-4153</b>	119-4153	Bushing - Rubber	2	
35	<b>R119-4164</b>	119-4164	Washer - Wave	2	
36	<b>R119-4156</b>	119-4156	Spring - Compression	2	
37	<b>R105-5700</b>	105-5700, 115-5258	Wave Washer - Bearing	1	
38	<b>R115-3299</b>	115-3299	Seal- Flocked	2	
39	<b>R119-4095</b>	119-4095	Grass Shield Assy	1	
40	<b>R354083</b>	104-7729, 354083	Decal - Danger	1	
<i>Tech Note: Ser# 316000001-999999999:</i>					
40	<b>R137-9706</b>	137-9706	Decal- Warning	1	
<i>Tech Note: Ser# 403460001-999999999:</i>					
41	<b>R119-4035</b>	119-4035	Bolt - 1/4-20 x 1 3/4 Soc HD Cap Scr	4	
42	<b>R119-4040</b>	119-4040	Nut - 1/4-20 Fl Locknut	4	

All original equipment manufacturers names and part numbers are used for identification purposes only, and we are in no way implying that our products are original equipment parts. Prices subject to change without notice.



# Replaces Toro Greensmaster TriFlex 3320 Parts

*DPA Cutting Unit - Models 04651, 04653 & 04655  
Reel & Bedknife*



Item No	R&R Part No.	OEM Part No.	Description	Qty Req	Order Quantity
43	<b>R105-5712</b>	105-5712, 119-4157	Retainer - Roller	2	
44	<b>R105-5711</b>	105-5711, 119-4165	Shim - Roller	2	
45	<b>R105-5710</b>	105-5710, 119-4166	Spacer - Roller	2	
46	<b>R106-9095-01</b>	106-9095-01	Scraper - Assy	1	
47	<b>R256-239</b>	256-239	Bearing	2	
48	<b>R106-9091</b>	106-9091	Pin - Scraper	2	
49	<b>R33113-016</b>	33113-016, 48-7620	Bolt - Hex Washer M6-1.0 x 12	4	
50	<b>R6050-103</b>	48-8010, 48-8030	Washer - Flat	4	
51	<b>R33023-00</b>	33023-00, 48-7900, 49-7810	Locknut - ESNA 6mm x 1.0	4	
52	<b>R33094-00</b>	33094-00, 93-5914	Washer - Flat - 8mm Hardened	2	
53	<b>R33024-00</b>	33024-00	Locknut - 8mm x 1.25	2	
54	<b>R115-7042</b>	115-7042	Bolt-Shoulder, Flange	4	
55	<b>R131-6150</b>	131-6150	Screw- 1/4-20 x 3/4 Hx Wh Thread Forming	4	
56	<b>R119-4012</b>	119-4012	Screw - Hx Washer HD Self Threading	3	
57	<b>R106-9094</b>	106-9094	Spring - LH - SS	1	
58	<b>R106-9093</b>	106-9093	Spring - RH - SS	1	
59	<b>R104-2603</b>	104-2603, 119-4158	Washer - HOC Bracket	2	

All original equipment manufacturers names and part numbers are used for identification purposes only, and we are in no way implying that our products are original equipment parts. Prices subject to change without notice.



# Replaces Toro Greensmaster TriFlex 3320 Parts

*DPA Cutting Unit - Models 04651, 04653 & 04655  
Reel & Bedknife*



Item No	R&R Part No.	OEM Part No.	Description	Qty Req	Order Quantity
60	<b>R119-9303</b>	105-5799, 119-9303	Frame - Crossmember	1	
61	<b>R119-9307-01</b>	119-9307-01	Arm - Pitch	2	
62	<b>R120-3221</b>	120-3221	Reel Nut Assy - LH	1	
63	<b>R120-3220</b>	120-3220	Plug - Plastic	1	
64	<b>R117-6706</b>	117-6706	Clamp - Motor	1	
65	<b>R119-4005</b>	119-4005	Side Plate Assy-LH Incl R117-6619	1	
66	<b>R119-4007</b>	119-4007	Side Plate Assy-RH Incl R117-6619	1	
67	<b>R117-6619</b>	117-6619	Bushing	2	
68	<b>R99-3773</b>	99-3773	Bolt- Plow 3/8-16 x 1 3/4	2	
69	<b>R132-4586</b>	132-4586	Screw - HOC - Stainless	2	
70	<b>R121-4605</b>	121-4506, 121-4605	Washer - Spring - Curved	2	

All original equipment manufacturers names and part numbers are used for identification purposes only, and we are in no way implying that our products are original equipment parts. Prices subject to change without notice.





# Replaces Toro Greensmaster TriFlex 3320 Parts

DPA Cutting Unit - Models 04651, 04653 & 04655  
Reel & Bedknife



Item No	R&R Part No.	OEM Part No.	Description	Qty Req	Order Quantity
71	<b>R453011</b>	01-166-0100, 01-166-0120, 01-166-0270, 01-166-0500, 01-166-0600, 01-166-0620, 132-4593, 2356-3, 237-12, 24-10-AD, 24-11-AD, 24-11-BD, 24-12-AD, 24-12-BD, 30-9310, 32-8190, 3256-24, 3256-3, 3256-36, 3256-4, 453011, 47-9950, 48-9220, 513458, 7-0052	Washer - Flat 3/8 SAE Y/Zinc	4	
72	<b>R1891</b>	1891	E-Ring	2	

All original equipment manufacturers names and part numbers are used for identification purposes only, and we are in no way implying that our products are original equipment parts. Prices subject to change without notice.