

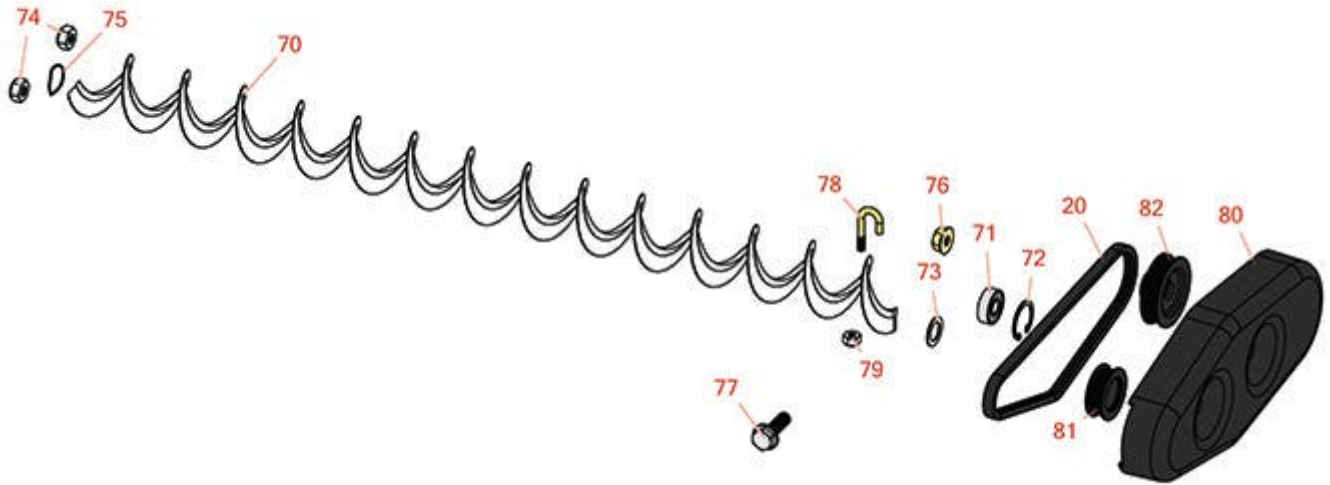


Replaces Toro Greensmaster TriFlex

3320 Parts

DPA Cutting Unit - Models 04651, 04653 & 04655

Rear Roller Brush



All original equipment manufacturers names and part numbers are used for identification purposes only, and we are in no way implying that our products are original equipment parts. Prices subject to change without notice.



Replaces Toro Greensmaster TriFlex

3320 Parts

DPA Cutting Unit - Models 04651, 04653 & 04655
Rear Roller Brush



| Item No | R&R Part No. | OEM Part No. | Description | Qty Req | Order Quantity |
|------------------------------|------------------|--|----------------------------------|---------|----------------|
| Belts | | | | | |
| 20 | R105-5720 | 105-5720 | Belt - Poly V | 1 | |
| Other Parts Available | | | | | |
| 70 | R105-6792 | 104-1829, 105-6792 | Brush - Rear Roller | 1 | |
| 71 | R251-259 | 251-259, 251-307 | Bearing - Ball | 1 | |
| 72 | R104-4727 | 104-4727 | Ring - Retaining | 1 | |
| 73 | R112-6957 | 112-6957 | Washer - Hardened | 2 | |
| 74 | R301504 | 2296-42, 301504, 32127-24, 32128-33, 32146-17, 3296-16, 3296-42, 3296-42 , 915661P | Locknut - ESNA 1/4-20 | 2 | |
| 75 | R115-7143 | 115-7143 | Spring - Wave | 2 | |
| 76 | R104-8300 | 104-8300, 104-8300 , 119-4041 | Locknut - 5/16-18 Flanged Y/Zinc | 5 | |
| 77 | R3234-29 | 3234-17, 3234-29 | Bolt - 5/16-18x1 Serr Hex | 1 | |
| 78 | R104-1830 | 104-1830 | Bolt - J | 2 | |
| 79 | R3296-2 | 32127-10, 3296-2, 9157404 | Nut - #10 Lock | 2 | |
| 80 | R105-5719 | 105-5719 | Cover - Rear Brush | 1 | |

All original equipment manufacturers names and part numbers are used for identification purposes only, and we are in no way implying that our products are original equipment parts. Prices subject to change without notice.



Replaces Toro Greensmaster TriFlex

3320 Parts

DPA Cutting Unit - Models 04651, 04653 & 04655

Rear Roller Brush



| Item No | R&R Part No. | OEM Part No. | Description | Qty Req | Order Quantity |
|---------|------------------|-----------------------|----------------------|---------|----------------|
| 81 | R104-1834 | 104-1820, 104-1834 | Idler Bearing - Assy | 1 | |
| 82 | R106-6917 | 106-6917 | Pulley - Driven | 1 | |

All original equipment manufacturers names and part numbers are used for identification purposes only, and we are in no way implying that our products are original equipment parts. Prices subject to change without notice.