

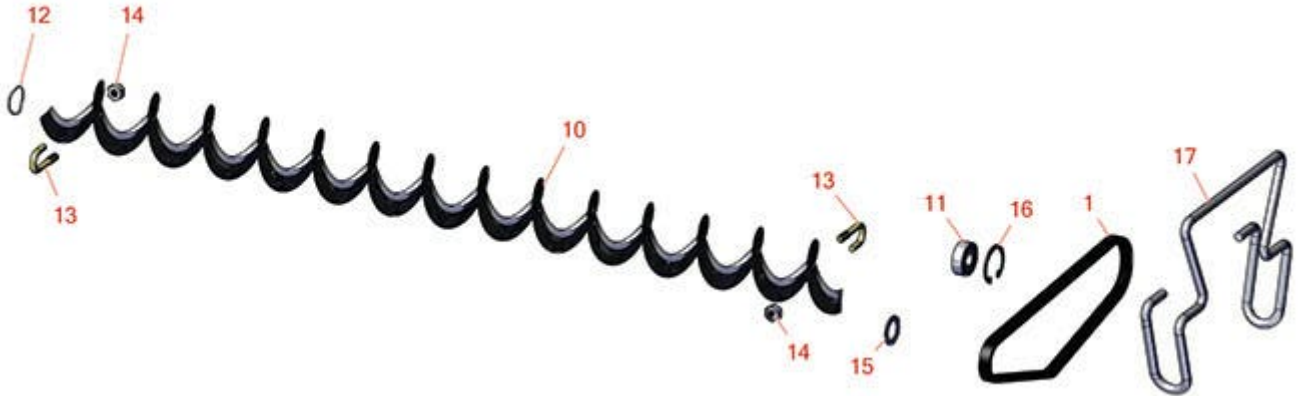


# Replaces Toro Greensmaster TriFlex

## 3320 Parts

*Dethatching Unit - Model 04720*

*Rear Roller Brush*



All original equipment manufacturers names and part numbers are used for identification purposes only, and we are in no way implying that our products are original equipment parts. Prices subject to change without notice.



# Replaces Toro Greensmaster TriFlex

## 3320 Parts

*Dethatching Unit - Model 04720*

*Rear Roller Brush*



Item No	R&R Part No.	OEM Part No.	Description	Qty Req	Order Quantity
<b>Belts</b>					
1	<b>R105-5720</b>	105-5720	Belt - Poly V	1	
<b>Other Parts Available</b>					
10	<b>R105-6792</b>	104-1829, 105-6792	Brush - Rear Roller	1	
11	<b>R251-259</b>	251-259, 251-307	Bearing - Ball	1	
12	<b>R115-7143</b>	115-7143	Spring - Wave	1	
13	<b>R104-1830</b>	104-1830	Bolt - J	2	
14	<b>R3296-2</b>	32127-10, 3296-2, 9157404	Nut - #10 Lock	2	
15	<b>R112-6957</b>	112-6957	Washer - Hardened	2	
16	<b>R104-4727</b>	104-4727	Ring - Retaining	1	
17	<b>R117-6706</b>	117-6706	Clamp - Motor	1	

All original equipment manufacturers names and part numbers are used for identification purposes only, and we are in no way implying that our products are original equipment parts. Prices subject to change without notice.