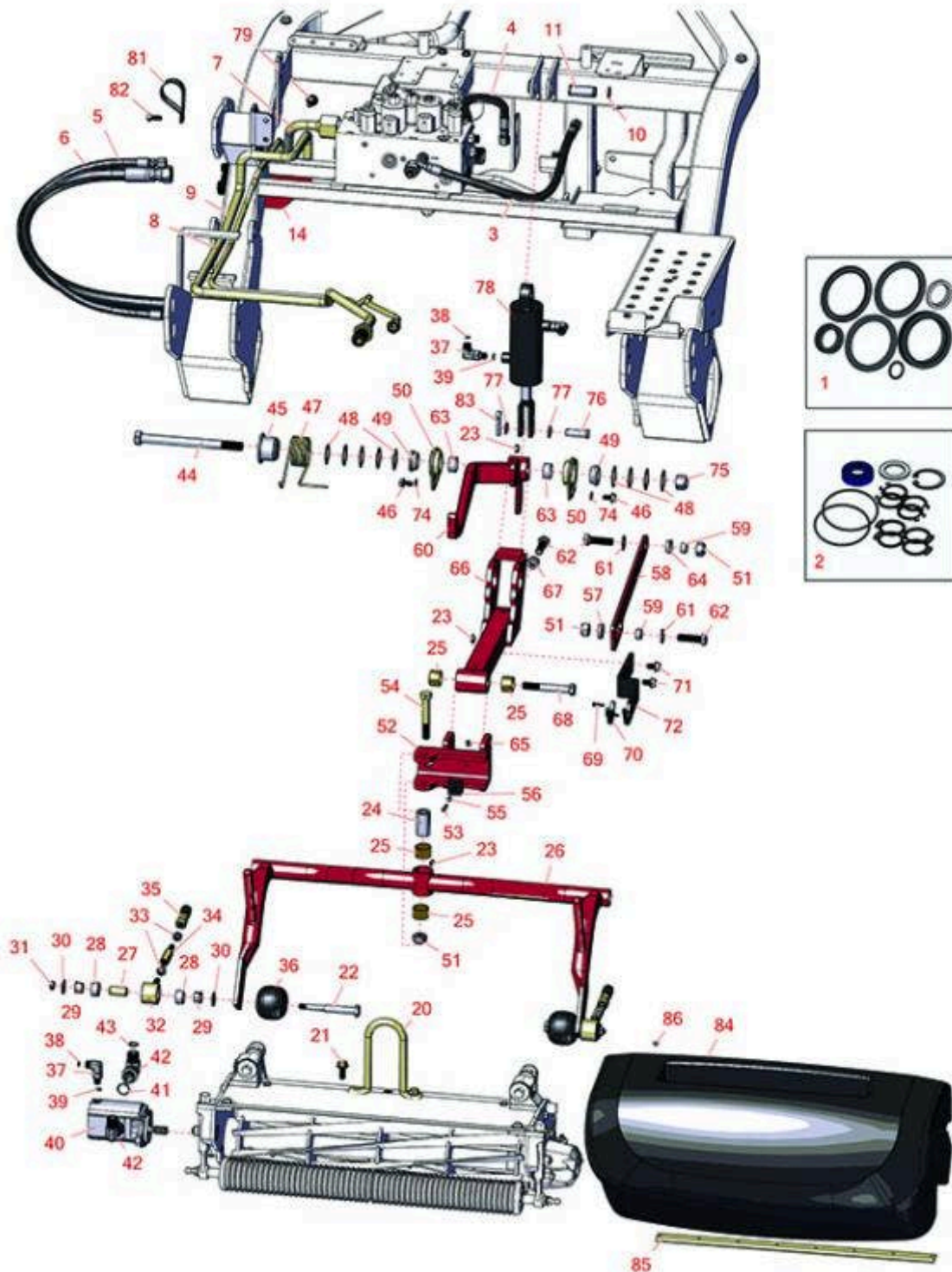




# Replaces Toro Greensmaster 3250-D Parts

Traction Unit - Model 04383 & 04384  
Center Pull Frame



All original equipment manufacturers names and part numbers are used for identification purposes only, and we are in no way implying that our products are original equipment parts. Prices subject to change without notice.



# Replaces Toro Greensmaster 3250-D Parts

Traction Unit - Model 04383 & 04384  
Center Pull Frame



Item No	R&R Part No.	OEM Part No.	Description	Qty Req	Order Quantity
<b>Overhaul Kits and Service Tools</b>					
1	<b>R105-3836</b>	105-3836	Seal Kit - Fits R105-3820 Cylinder	1	
2	<b>R112-9184</b>	112-9184	Seal Kit - Fits Toro and Turolla R112-9200 Motor	1	
<b>Hoses</b>					
3	<b>R112-9185</b>	112-9185	Hydraulic Hose Assy	1	
<i>Tech Note: Fits Model 04383/07-11 &amp; 04384:</i>					
3	<b>R93-2258</b>	93-2258	Hydraulic Hose Assy - Rear Cylinder	1	
<i>Tech Note: Fits Model 04383 Up to 2007:</i>					
3	<b>R94-3477</b>	94-3477	Hydraulic Hose Assy - Rear Cylinder	1	
<i>Tech Note: Ser# 220000001-250999999:</i>					
4	<b>R106-7981</b>	106-7981	Hydraulic Hose Assy	1	
5	<b>R105-5405</b>	105-5405	Hydraulic Hose Assy	1	
6	<b>R95-2907</b>	95-2907	Hydraulic Hose Assy - Rear Reel Motor	2	
7	<b>R94-1317</b>	94-1317	Tube-Hyd	1	
8	<b>R94-1321</b>	94-1321	Tube-Hyd	1	
9	<b>R94-1318</b>	94-1318	Tube-Hyd	1	
<b>Other Parts Available</b>					
10	<b>R458013</b>	30-0580, 32120-72, 458013, 93-2525, 936125	Ring - Retaining	2	
11	<b>R94-3452</b>	94-3452	Pin	1	
14	<b>R94-1316</b>	94-1316	Bracket- Bulkhead	1	

All original equipment manufacturers names and part numbers are used for identification purposes only, and we are in no way implying that our products are original equipment parts. Prices subject to change without notice.



# Replaces Toro Greensmaster 3250-D Parts

Traction Unit - Model 04383 & 04384  
Center Pull Frame



Item No	R&R Part No.	OEM Part No.	Description	Qty Req	Order Quantity
20	<b>R105-5740</b>	105-5740	Hook - Lift	1	
21	<b>R33115-025</b>	33115-025, 48-7780	Bolt - Hex HD M10-1.5 x 25	2	
22	<b>R99-4209</b>	99-4209	Shaft - Special	2	
<i>Tech Note: Fits Model 04383 Up to 2007:</i>					
22	<b>R108-6543</b>	108-6543	Shaft - Bsk Roller	2	
<i>Tech Note: Fits Model 04383/07-11 &amp; 04384:</i>					
23	<b>R302-5</b>	21-6010, 302-11, 302-37, 302-47, 302-5, 302-57, 302-58, 302-6, 31-0300, 32-9660, 60-0800, 62-3880, 92-4181	Fitting - Grease	3	
24	<b>R99-4109</b>	99-4109	Spacer - 1.795 in	1	
25	<b>R98-4166</b>	98-4166	Bushing - Carrier Frame	4	
26	<b>R99-4114</b>	99-4114	Pull Frame	1	
27	<b>R75-5270</b>	75-5270	Spacer - Pull Link	2	
<i>Tech Note: Fits Model 04383 Up to 2007:</i>					
27	<b>R108-6544</b>	108-6544	Spacer	2	
<i>Tech Note: Fits Model 04383/07-11 &amp; 04384:</i>					
28	<b>R95-0532</b>	95-0532	Bushing - Pull Link	4	

All original equipment manufacturers names and part numbers are used for identification purposes only, and we are in no way implying that our products are original equipment parts. Prices subject to change without notice.



# Replaces Toro Greensmaster 3250-D Parts

Traction Unit - Model 04383 & 04384  
Center Pull Frame



Item No	R&R Part No.	OEM Part No.	Description	Qty Req	Order Quantity
29	<b>R256-292</b>	104-7738, 256-292	Bushing - Nyliner Bed Bar	4	
<i>Tech Note: Fits Model 04383 Up to 2007:</i>					
30	<b>R80-6990</b>	80-6990	Washer - Hardened	4	
<i>Tech Note: Fits Model 04383 Up to 2007:</i>					
30	<b>R52-2860</b>	119-4150, 52-2860	Washer - Bed Bar Pivot	4	
<i>Tech Note: Fits Model 04383/07-11 &amp; 04384:</i>					
31	<b>R323-8</b>	01-150-0060, 01-178-0612, 20-49-AD, 20-49-AGD, 323-8, 3273-41, 908036P	Bolt - Hex HD 3/8-16 x 1-1/2 GR8	2	
<i>Tech Note: Fits Model 04383 Up to 2007:</i>					
31	<b>R3296-59</b>	3296-59	Locknut - 3/8-16 Nylon Jam	2	
<i>Tech Note: Fits Model 04383/07-11 &amp; 04384:</i>					
32	<b>R100-6440</b>	100-6440, 17-2889, 94-9632, 95-2901	Pull Link - w/Bushing	2	
<i>Tech Note: Fits Model 04383 Up to 2007:</i>					
32	<b>R108-6542</b>	108-6542	Pull Link Assy	2	
<i>Tech Note: Fits Model 04383/07-11 &amp; 04384:</i>					
33	<b>R3220-3</b>	01-191-0624, 3220-3, 3290-149	Nut - Jam Ball Joint	4	
34	<b>R99-4270</b>	99-4149, 99-4270	Extension - Pull Arm 4 in.	2	
<i>Tech Note: Fits Model 04383 Up to 2007:</i>					

All original equipment manufacturers names and part numbers are used for identification purposes only, and we are in no way implying that our products are original equipment parts. Prices subject to change without notice.



# Replaces Toro Greensmaster 3250-D Parts

*Traction Unit - Model 04383 & 04384  
Center Pull Frame*



Item No	R&R Part No.	OEM Part No.	Description	Qty Req	Order Quantity
34	<b>R88-6870</b>	88-6870	Extension - Pull Arm	2	
<i>Tech Note: Fits Model 04383/07-11 &amp; 04384:</i>					
35	<b>R99-1460</b>	2411-28, 2411-29, 2411-30, 2411-8, 8-7710, 94-2959, 99-1460	Receiver - Ball Joint	2	
36	<b>R99-4210</b>	99-4140, 99-4210	Basket Roller - Smooth Anti Scalp	2	
37	<b>R340-132</b>	340-132	Hydraulic Fitting - 90 Deg	3	
38	<b>R237-21</b>	237-21, 327-21	O-Ring	3	
39	<b>R237-22</b>	107-8844, 237-22, 237-78	O-Ring	3	
40	<b>R120-2072</b>	100-6426, 108-6487, 112-9200, 120-2072, 93-1375	Hydraulic Gear Motor	1	
41	<b>R237-79</b>	237-79	O-Ring	2	
42	<b>R340-98</b>	340-98	Hydraulic Fitting	2	
43	<b>R237-30</b>	23-6320, 237-30	O-Ring - Seal	2	
44	<b>R327-25</b>	327-25	Axle - Caster 5/8-11 x 7-1/2	1	
45	<b>R105-9779</b>	105-9779	Guide-Spring	1	

All original equipment manufacturers names and part numbers are used for identification purposes only, and we are in no way implying that our products are original equipment parts. Prices subject to change without notice.



# Replaces Toro Greensmaster 3250-D Parts

*Traction Unit - Model 04383 & 04384  
Center Pull Frame*



Item No	R&R Part No.	OEM Part No.	Description	Qty Req	Order Quantity
46	<b>R33114-016</b>	33114-016, 42-9230, 42-9270, 48-7680, 48-7690, 48-7700	Bolt - Hx HD 8mm x 1.25 x 15	2	
47	<b>R105-9781</b>	105-9781	Spring - Torsion	1	
48	<b>R63-2290</b>	63-2290	Washer - Thrust	9	
49	<b>R94-9610</b>	93-2361, 94-9610, 98-2197	Bushing - Flanged Carrier Frame	2	
49	<b>R98-2197</b>	98-2197	Bushing - Flanged Carrier Frame	1	
50	<b>R98-4618</b>	98-4618	Bushing - Eccentric	2	
<i>Tech Note: Fits Model 04383/All - 04384/2012-2013:</i>					
51	<b>R3296-25</b>	30-3380, 32127-21, 32127-31, 3290-160, 3290-33, 3296-13, 3296-25, 3296-45, 329645	Locknut - 1/2-13 Heavy ESNA	4	
<i>Tech Note: Fits Model 04383:</i>					
51	<b>R32128-23</b>	32128-23, 3218-23, 99-5107	Nut - Lock Hex Flanged 1/2-13	4	
<i>Tech Note: Fits Model 04384:</i>					
52	<b>R99-4183-01</b>	99-4183-01	RH Clevis Assy	1	
53	<b>R78-8710</b>	78-8710	Screw	1	

All original equipment manufacturers names and part numbers are used for identification purposes only, and we are in no way implying that our products are original equipment parts. Prices subject to change without notice.



# Replaces Toro Greensmaster 3250-D Parts

*Traction Unit - Model 04383 & 04384  
Center Pull Frame*



Item No	R&R Part No.	OEM Part No.	Description	Qty Req	Order Quantity
54	<b>R325-13</b>	01-178-0826, 20-94-AGD, 325-13, 325-26, Jul-52	Bolt - Hex HD 1/2-13 x 3-1/4	1	
55	<b>R3256-77</b>	3256-77	Washer-Flat	1	
56	<b>R94-1392</b>	94-1392	Pad-Rubber	1	
57	<b>R99-4248</b>	99-4248	Spacer	1	
58	<b>R99-4246</b>	99-4246	Link Bracket Assy	1	
59	<b>R99-4201</b>	99-4201	Tube - Spacer	2	
60	<b>R99-4126</b>	99-4126	Lift Arm Assy - Center	1	
61	<b>R3256-26</b>	01-166-0540, 01-166-0820, 17-2530, 24-13-BD, 30-8570, 3256-26, 356206, 48-9390	Washer - 1/2 in	2	
62	<b>R325-7</b>	01-150-0380, 01-178-0814, 3226-3, 325-7, 48-9490	Bolt - 1/2-13 x 1 3/4 Hex HD Gr 5	4	
63	<b>R92-8995</b>	92-8995, 94-4532	Bushing - 1 x 1 1/8 x 1/2 Split	2	
64	<b>R99-4243</b>	99-4243	Bushing - Flanged	1	
65	<b>R3296-12</b>	32127-20, 3296-12	Nut - 10-32 Nylon Lock	1	
66	<b>R99-4116</b>	99-4116	Rear Lift Frame Assy	1	

All original equipment manufacturers names and part numbers are used for identification purposes only, and we are in no way implying that our products are original equipment parts. Prices subject to change without notice.



# Replaces Toro Greensmaster 3250-D Parts

*Traction Unit - Model 04383 & 04384  
Center Pull Frame*



Item No	R&R Part No.	OEM Part No.	Description	Qty Req	Order Quantity
67	<b>R443818</b>	01-191-0813, 3218-18, 3218-5, 3248-18	Nut - 1/2-13 Hex Jam Zinc	1	
68	<b>R325-14</b>	01-150-1720, 01-178-0828, 20-95-AD, 20-95-AGD, 3226-9, 325-14	Bolt - Hex HD 1/2-13 x 3-1/2	1	
69	<b>R3250-17</b>	3250-17	Screw - Pan HD Ph Ms	3	
70	<b>R99-4225</b>	99-4134, 99-4225	Pad-Wear	1	
71	<b>R32144-69</b>	32144-69	Bolt - Hx HD	2	
72	<b>R99-4111-01</b>	99-4111, 99-4111-01	Plate-Transport - 1	1	
74	<b>R3256-74</b>	3256-74	Washer - Flat	2	
75	<b>R3296-53</b>	3296-53	Locknut - 5/8-11 ESNA Yellow	1	
76	<b>R283-68</b>	283-68	Pin-Clevis	1	
77	<b>R33096-00</b>	33096-00	Washer-Flat	2	
<i>Tech Note: Fits Model 04383:</i>					
78	<b>R105-3820</b>	105-3820, 94-6357, 99-4262, 99-8157	Hydraulic Cylinder - Rear	1	
79	<b>R32144-14</b>	32104-32, 32104-49, 32144-14	Bolt - Hex Washer 5/16-18 x 5/8	2	
<i>Tech Note: Fits Model 04383:</i>					
81	<b>R2412-137</b>	2412-137	Clamp-R, Double	1	

All original equipment manufacturers names and part numbers are used for identification purposes only, and we are in no way implying that our products are original equipment parts. Prices subject to change without notice.





# Replaces Toro Greensmaster 3250-D Parts



*Traction Unit - Model 04383 & 04384  
Center Pull Frame*

Item No	R&R Part No.	OEM Part No.	Description	Qty Req	Order Quantity
82	<b>R66-3160</b>	33114-020, 43-0110, 48-7710, 66-3160	Bolt - Flanged Hex HD	1	
<i>Tech Note: Fits Model 04383:</i>					
83	<b>R3272-11</b>	01-151-0010, 01-151-0040, 28-18-D, 28-28-D, 3211-72, 3272-11	Pin - Cotter	1	
<i>Tech Note: Fits Model 04383:</i>					
84	<b>R106-4689</b>	106-4689	Grass Basket Assy	1	
<i>Tech Note: 2004 &amp; Newer:</i>					
84	<b>R104-2071</b>	104-2071	Grass Basket Assy	1	
<i>Tech Note: Up to 2004:</i>					
85	<b>R104-2607</b>	104-2607	Strip - Reinforcing Grass Basket	1	
86	<b>R3290-382</b>	3269-15, 3290-382	Rivet - 5/32 x 1/2 Pop Rivet	8	

All original equipment manufacturers names and part numbers are used for identification purposes only, and we are in no way implying that our products are original equipment parts. Prices subject to change without notice.