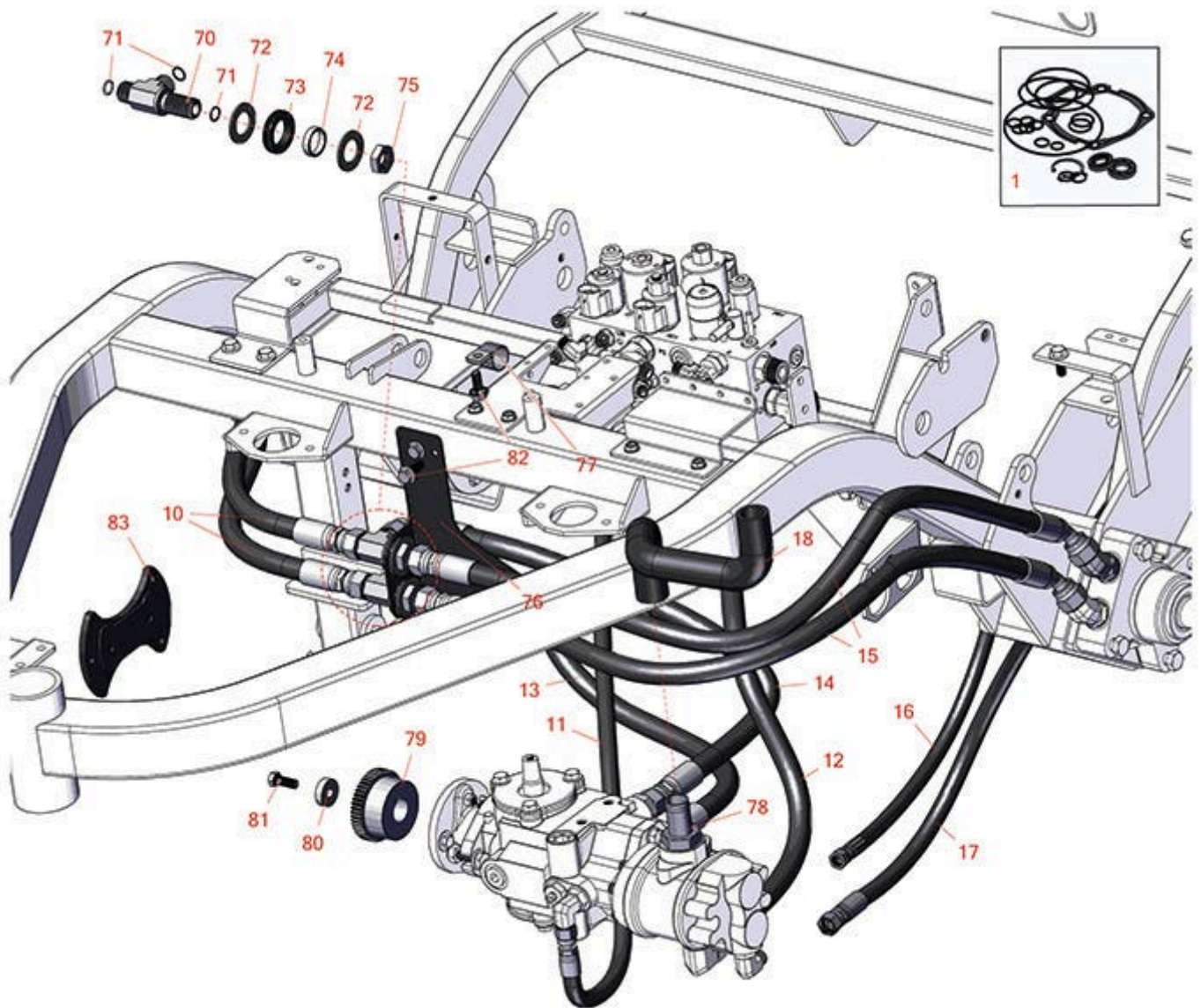




Replaces Toro Greensmaster 3250-D Parts

*Traction Unit - Model 04383 & 04384
Hydraulic Traction*



All original equipment manufacturers names and part numbers are used for identification purposes only, and we are in no way implying that our products are original equipment parts. Prices subject to change without notice.



Replaces Toro Greensmaster 3250-D Parts

Traction Unit - Model 04383 & 04384
Hydraulic Traction



| Item No | R&R Part No. | OEM Part No. | Description | Qty Req | Order Quantity |
|---|------------------|---------------------------------|---|---------|----------------|
| 1 | R120-5754 | 120-5754 | Seal Kit - Eaton Hydraulic Pump R104-4890 | 1 | |
| Hoses | | | | | |
| 10 | R94-5358 | 94-5358 | Hydraulic Hose Assy | 2 | |
| 11 | R108-6514 | 108-6514 | Hydraulic Hose Assy | 1 | |
| <i>Tech Note: Fits Model 04383:</i> | | | | | |
| 11 | R121-2562 | 121-2562 | Hydraulic Hose Assy | 1 | |
| <i>Tech Note: Fits Model 04384:</i> | | | | | |
| 12 | R99-4216 | 99-4216 | Hydraulic Hose Assy | 1 | |
| <i>Tech Note: Fits Model 04383:</i> | | | | | |
| 13 | R99-4220 | 99-4220 | Hydraulic Hose Assy | 1 | |
| <i>Tech Note: Fits Model 04384:</i> | | | | | |
| 14 | R99-4217 | 99-4217 | Hydraulic Hose Assy | 1 | |
| <i>Tech Note: Fits Model 04383:</i> | | | | | |
| 15 | R94-5357 | 94-5357 | Hydraulic Hose Assy | 2 | |
| 16 | R94-4539 | 94-4539 | Hydraulic Hose Assy | 1 | |
| <i>Tech Note: Fits Model 04383/up to 2006:</i> | | | | | |
| 16 | R110-4008 | 110-4008 | Hydraulic Hose Assy | 1 | |
| <i>Tech Note: Fits Models 04383/ 06-11 & 04384:</i> | | | | | |
| 17 | R105-4339 | 105-4339 | Hydraulic Hose Assy | 1 | |
| 18 | R99-1905 | 93-2068, 94-8174, 99-1905 | Hose-Inlet, Pump | 1 | |

All original equipment manufacturers names and part numbers are used for identification purposes only, and we are in no way implying that our products are original equipment parts. Prices subject to change without notice.



Replaces Toro Greensmaster 3250-D Parts

*Traction Unit - Model 04383 & 04384
Hydraulic Traction*



| Item No | R&R Part No. | OEM Part No. | Description | Qty Req | Order Quantity |
|---------|--------------|--------------|-------------|---------|----------------|
|---------|--------------|--------------|-------------|---------|----------------|

Other Parts Available

| | | | | | |
|----|--------------------|--|---------------------------------|---|--|
| 70 | R94-5350 | 94-5350 | Tee-Bulkhead | 2 | |
| 71 | R237-65 | 237-65, 237.65 | O-Ring | 6 | |
| 72 | R69-9010 | 69-9010, 9-9010 | Washer | 4 | |
| 73 | R240-3 | 240-3 | Grommet- Rubber | 2 | |
| 74 | R69-9000 | 125-1984, 69-9000 | Spacer | 2 | |
| 75 | R340-74 | 340-74 | Locknut - Bulkhead | 2 | |
| 76 | R99-4222-03 | 99-4222-03 | Bracket- Hose | 1 | |
| 77 | R2412-4 | 2412-4, Oct-70, Oct-80 | Clamp - 3/4 in | 1 | |
| 78 | R354-78 | 354-78 | Connector-Hose | 1 | |
| 79 | R119-4418 | 119-4418 | Coupling | 1 | |
| 80 | R117-3657 | 117-3657 | Spacer - Hardened | 1 | |
| 81 | R3211-4 | 01-150-1040, 01-179-0608, 3211-4 | Bolt - Hex HD | 1 | |
| 82 | R32144-14 | 32104-32, 32104-49, 32144-14 | Bolt - Hex Washer 5/16-18 x 5/8 | 7 | |
| 83 | R93-2220-03 | 93-2220, 93-2220-03 | Adapter - Pump | 1 | |

All original equipment manufacturers names and part numbers are used for identification purposes only, and we are in no way implying that our products are original equipment parts. Prices subject to change without notice.