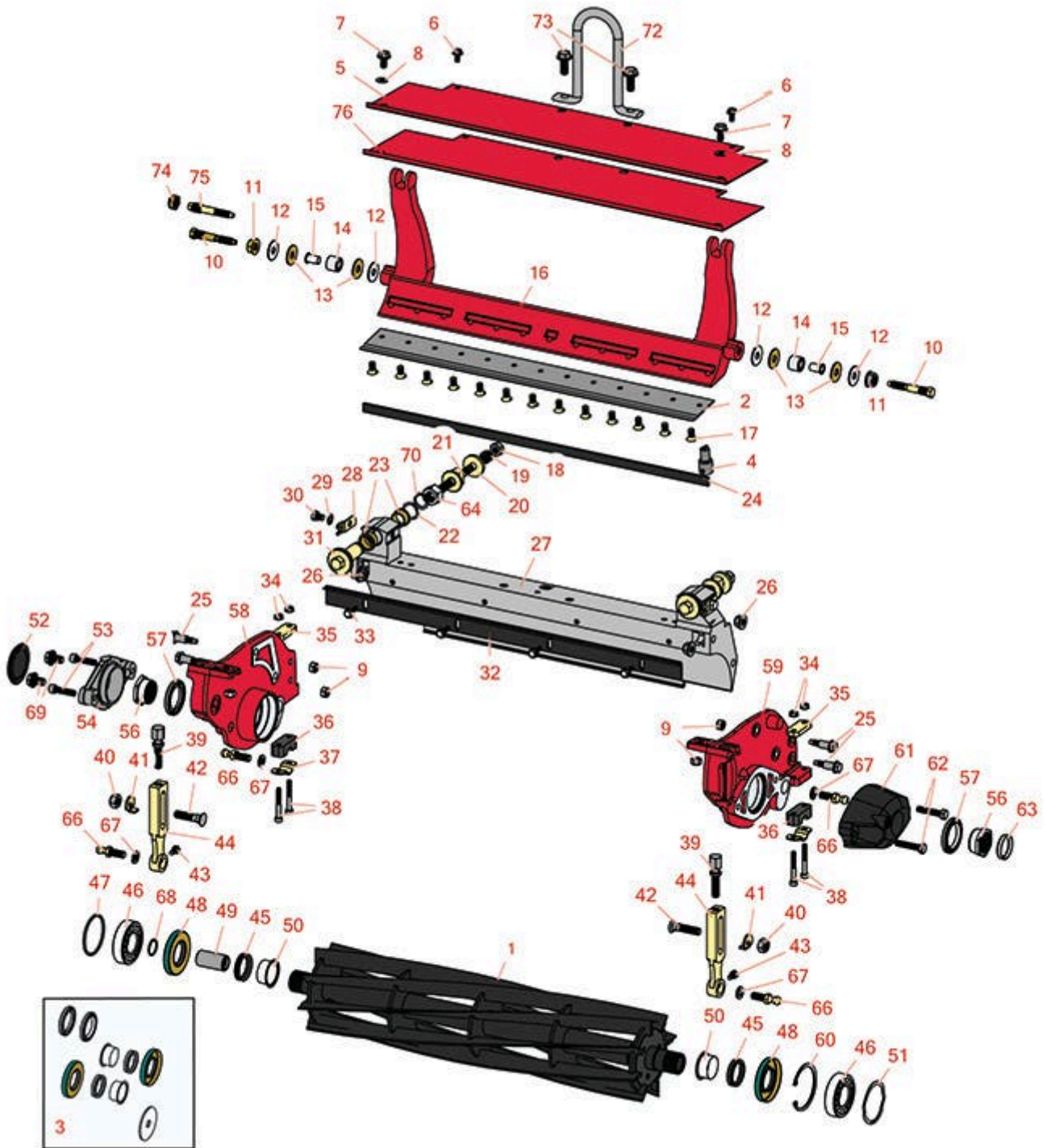




# Replaces Toro Greensmaster 3250-D Parts

DPA Cutting Unit - Models 04610, 04611 & 04616  
Reel & Bedknife



All original equipment manufacturers names and part numbers are used for identification purposes only, and we are in no way implying that our products are original equipment parts. Prices subject to change without notice.



# Replaces Toro Greensmaster 3250-D Parts

DPA Cutting Unit - Models 04610, 04611 & 04616  
Reel & Bedknife



Item No	R&R Part No.	OEM Part No.	Description	Qty Req	Order Quantity
---------	--------------	--------------	-------------	---------	----------------

## R&R Reels, Lifetime Guaranteed

1	<b>R105-5793</b>	105-5793	Reel - 8 Blade	1	
1	<b>R105-5792</b>	105-5792	Reel - 11 Blade	1	
1	<b>R127-2194</b>	127-2194	Reel - 11 Blade Low Drag	1	
1	<b>R150748</b>	R115-5370	Reel - 14 Blade Razor Series Low Drag 21	1	
1	<b>R115-5370</b>	115-5370	Reel - 14 Blade	1	

## R&R Bedknives, Lifetime Guaranteed

2	<b>R150466</b>	63-8600, 64-6393, 94-6393	Bedknife - Super Thick .312 - 1.00 HOC	1	
2	<b>R94-6392</b>	62-2500, 94-6392	Bedknife - High Cut .312 - 1.00 HOC	1	
2	<b>R93-4264</b>	57-4960, 63-8470, 93-4264	Bedknife - Low Cut .187 - 1.00 HOC	1	
2	<b>R93-4262</b>	65-8250, 93-4262, 93-4263	Bedknife - Micro Cut .062 - .187 HOC	1	
2	<b>R108-4302</b>	108-4301, 108-4302	Bedknife - Tournament Cut Extended .125 - .500 HOC	1	
2	<b>R108-4303</b>	104-7720, 108-4303	Bedknife - Micro Cut Extended .062 - .187 HOC	1	
2	<b>R93-4263</b>	63-8560, 66-9320, 93-4263, 93-6039	Bedknife - Tournament Cut .125 - .500 HOC	1	

## R&R Razor Tool Steel Bedknives, Lifetime Guaranteed

2	<b>R115-1881</b>	115-1881	Bedknife - Razor Tool Steel - 21 Tournament Cut .125 - .500 HOC	1	
---	------------------	----------	--------------------------------------------------------------------	---	--

All original equipment manufacturers names and part numbers are used for identification purposes only, and we are in no way implying that our products are original equipment parts. Prices subject to change without notice.



# Replaces Toro Greensmaster 3250-D Parts



DPA Cutting Unit - Models 04610, 04611 & 04616  
Reel & Bedknife

Item No	R&R Part No.	OEM Part No.	Description	Qty Req	Order Quantity
---------	--------------	--------------	-------------	---------	----------------

*Tech Note: Razor Tool Steel Bedknives are constructed from high grade tool steel for extended life and optimum cut.:*

2	<b>R115-1880</b>	115-1880	Bedknife - Razor Tool Steel - 21 Micro Cut .062 - .187 HOC	1	
---	------------------	----------	------------------------------------------------------------	---	--

*Tech Note: Razor Tool Steel Bedknives are constructed from high grade tool steel for extended life and optimum cut.:*

2	<b>R150492</b>	150492	Bedknife - Razor Tool Steel - 21 Micro Cut Ext	1	
---	----------------	--------	------------------------------------------------	---	--

*Tech Note: Razor Tool Steel Bedknives are constructed from high grade tool steel for extended life and optimum cut.:*

2	<b>R112-7475</b>	112-7475	Bedknife - Razor Tool Steel - 22 x 3/8 Fairway	1	
---	------------------	----------	------------------------------------------------	---	--

*Tech Note: Razor Tool Steel Bedknives are constructed from high grade tool steel for extended life and optimum cut.:*

## Overhaul Kits

3	<b>R106-6937</b>	106-6937	Kit - Reel Seal	1	
---	------------------	----------	-----------------	---	--

*Tech Note: Includes: 2 ea: R106-6927 Sleeve, R106-6926 Inner Seal, R253-134 Outer Seal, R106-6929 V-Ring; & 1 ea: R104-0532 Washer:*

## Service Tools

4	<b>R51-0880</b>	51-0880	Bedknife Screw Driver Tool	1	
---	-----------------	---------	----------------------------	---	--

## Other Parts Available

5	<b>R106-2600-01</b>	106-2600-01	Grass Shield	1	
---	---------------------	-------------	--------------	---	--

6	<b>R104-2628</b>	104-2628	Bolt - Hex Washer M6-1.0 x 12	2	
---	------------------	----------	-------------------------------	---	--

7	<b>R33114-016</b>	33114-016, 42-9230, 42-9270, 48-7680, 48-7690, 48-7700	Bolt - Hx HD 8mm x 1.25 x 15	2	
---	-------------------	-----------------------------------------------------------------------	------------------------------	---	--

All original equipment manufacturers names and part numbers are used for identification purposes only, and we are in no way implying that our products are original equipment parts. Prices subject to change without notice.



# Replaces Toro Greensmaster 3250-D Parts

DPA Cutting Unit - Models 04610, 04611 & 04616  
Reel & Bedknife



Item No	R&R Part No.	OEM Part No.	Description	Qty Req	Order Quantity
8	<b>R453009</b>	01-166-0400, 24-10-BD, 24-9-AD, 32-9650, 3256-2, 3256-23, 3256-3, 3256-67, 3290-217, 3556-3, 4-2390, 7-0152	Washer - Flat 5/16 SAE	2	
9	<b>R33024-00</b>	33024-00	Locknut - 8mm x 1.25	4	
10	<b>R65-6270</b>	119-4050, 65-6270	Bolt - Bed Bar	2	
<i>Tech Note: Up to 2010:</i>					
11	<b>R32128-48</b>	32128-48	Locknut - 7/16-20 Flanged	2	
<i>Tech Note: Up to 2010:</i>					
12	<b>R52-2860</b>	119-4150, 52-2860	Washer - Bed Bar Pivot	4	
13	<b>R52-2900</b>	52-2900	Washer - Nylon	4	
14	<b>R63-9510</b>	63-9480, 63-9510	Bushing - Rubber For Bed Bar	2	
15	<b>R52-2890</b>	52-2890	Bushing - Flanged	2	
16	<b>R106-2648-01</b>	106-2648-01	Bed Bar	1	
16	<b>R150176</b>		Bed Bar - Fits R&R Units Only	1	
16	<b>R99-3794-01</b>	99-3794-01, 99-3794-03	Bed Bar - Aggressive	1	
17	<b>R150476</b>	3-3816, 3-6462, 52-4910, 57-4910	Screw - Bedknife 5/16-18 x 5/8	13	

All original equipment manufacturers names and part numbers are used for identification purposes only, and we are in no way implying that our products are original equipment parts. Prices subject to change without notice.



# Replaces Toro Greensmaster 3250-D Parts

*DPA Cutting Unit - Models 04610, 04611 & 04616  
Reel & Bedknife*



Item No	R&R Part No.	OEM Part No.	Description	Qty Req	Order Quantity
18	<b>R33025-00</b>	32025-00, 33025-00	Locknut - 10mm x 1.5 Jam	2	
19	<b>R99-3755</b>	99-3755	Spring - Bed Bar Adjusting	2	
20	<b>R99-2098</b>	99-2098	Washer - Bed Bar Adjuster	2	
21	<b>R99-2096</b>	99-2096	Screw - Bed Bar Adjustment - M10 Thrd 1 End	2	
22	<b>R106-5335</b>	106-5335	Wave Washer - Reel Adjusting	2	
23	<b>R106-5344</b>	106-5344	Bushing - Flanged and Keyed	4	
24	<b>R106-2619</b>	106-2619	Seal - Strip	1	
25	<b>R105-5774</b>	105-5774	Bolt - Shoulder	4	
26	<b>R98-0668</b>	98-0668	Nut - Whiz Lock	4	
27	<b>R119-9303</b>	105-5799, 119-9303	Frame - Crossmember	1	
28	<b>R99-2097</b>	99-2097	Detent - Bed Bar Adjuster	2	
29	<b>R3255-8</b>	3255-8	Washer - Lock 5/16 Ext	2	
30	<b>R33114-010</b>	33114-010	Bolt - Hex HD M8-1.25 x 10	2	
31	<b>R106-6921</b>	106-5334, 106-6921, 114-4634	Shaft - Bed Bar Adjustment Assy	2	
31	<b>R106-5363</b>	106-5363	Shaft - Adjusting - Bed Bar - Stainless	2	
32	<b>R106-6924-03</b>	106-2617-03, 106-6924-03	Cut-Off Bar	1	
33	<b>R110-3986</b>	110-3986, 48-8870, 56-6380	Screw - M6 x 1.0 x 20mm	4	
34	<b>R33003-00</b>	33003-00, 65-7980	Hex Nut - Flanged 6-1.0mm	4	

All original equipment manufacturers names and part numbers are used for identification purposes only, and we are in no way implying that our products are original equipment parts. Prices subject to change without notice.



# Replaces Toro Greensmaster 3250-D Parts

*DPA Cutting Unit - Models 04610, 04611 & 04616  
Reel & Bedknife*



Item No	R&R Part No.	OEM Part No.	Description	Qty Req	Order Quantity
35	<b>R105-5711</b>	105-5711, 119-4165	Shim - Roller	2	
36	<b>R105-5710</b>	105-5710, 119-4166	Spacer - Roller	2	
37	<b>R105-5712</b>	105-5712, 119-4157	Retainer - Roller	2	
38	<b>R106-2603</b>	106-2603	Bolt - Shoulder M6-1.0 x 45	4	
39	<b>R106-2635</b>	106-2635	Screw - HOC 2-7/16	2	
39	<b>R110-7352</b>	110-7352	Screw - HOC 2 5/8 Stainless	2	
40	<b>R106-4668</b>	106-4668	Locknut - 10mm x 1.5 Top Lock	2	
41	<b>R104-2603</b>	104-2603, 119-4158	Washer - HOC Bracket	2	
42	<b>R150647</b>	105-5342	Plow Bolt - HOC - Front Roller	2	
43	<b>R48-7610</b>	33113-012, 48-7610	Bolt - Hex HD Nyloc M6 x 12	2	
44	<b>R99-3781</b>	99-3781	Bracket - Front Roller 5 Oal	2	
44	<b>R107-3502</b>	107-3502	Bracket - Front Roller 5-1/4 Oal	2	
44	<b>R110-7351</b>	110-7351	Bracket - High HOC - 5 1/4	2	
44	<b>R106-4699</b>	106-4699	Bracket Kit - High Height of Cut (Set/2)	1	
45	<b>R106-6929</b>	106-6929	V-Ring - Reel	2	
46	<b>R93-2489</b>	93-2489	Bearing - Reel	2	
47	<b>R106-2607</b>	106-2607	O-Ring - Reel	1	
48	<b>R106-6926</b>	106-6926	Inner Seal - Reel	2	
49	<b>R94-4507</b>	94-4507	Coupling - Reel	1	

All original equipment manufacturers names and part numbers are used for identification purposes only, and we are in no way implying that our products are original equipment parts. Prices subject to change without notice.



# Replaces Toro Greensmaster 3250-D Parts

*DPA Cutting Unit - Models 04610, 04611 & 04616  
Reel & Bedknife*



Item No	R&R Part No.	OEM Part No.	Description	Qty Req	Order Quantity
50	<b>R106-6927</b>	106-6927	Speedi-Sleeve - Reel	2	
51	<b>R105-5700</b>	105-5700, 115-5258	Wave Washer - Bearing	1	
52	<b>R150485</b>	2410-30, 2410-30OSS	Cap - Protective Bearing Housing	1	
53	<b>R94-3559</b>	94-3559	Screw - Hex Socket Head	2	
54	<b>R104-9447</b>	104-9447	Adapter - Motor	1	
56	<b>R105-5706</b>	105-5706	Locknut - Reel	2	
57	<b>R253-134</b>	253-134	Outer Seal	2	
58	<b>R105-5797</b>	105-5797	Side Plate - RH - Fits OEM Units Only	1	
58	<b>R105-5797G</b>		Side Plate - RH - Fits R&R Units Only	1	
59	<b>R105-5795</b>	105-5795	Side Plate - LH - Fits OEM Units Only	1	
59	<b>R105-5795G</b>		Side Plate - LH - Fits R&R Units Only	1	
60	<b>R106-6914</b>	106-6914, SG427541	Snap Ring - Internal	1	
61	<b>R105-5709</b>	105-5709	Weight	1	
62	<b>R33114-040</b>	33114-040, 42-9530	Screw - Hh M8-1.25 x 40 CL8.8	2	
63	<b>R105-5708</b>	105-5708, 121-46009, 121-4609	Plug - Expansion	1	
64	<b>R106-5336</b>	106-5336	Nut - 5/8-18 Jam Bed Bar Adj	2	
66	<b>R94-2958</b>	94-2958	Stud - Alloy Ball Joint	2	

All original equipment manufacturers names and part numbers are used for identification purposes only, and we are in no way implying that our products are original equipment parts. Prices subject to change without notice.



# Replaces Toro Greensmaster 3250-D Parts

DPA Cutting Unit - Models 04610, 04611 & 04616  
Reel & Bedknife



Item No	R&R Part No.	OEM Part No.	Description	Qty Req	Order Quantity
67	<b>R3254-6</b>	01-166-0010, 01-166-0280, 01-166-0610, 3253-5, 3254-18, 3254-6, 3290-223, 48-9370	Washer - Lock 3/8	2	
68	<b>R105-5775</b>	105-5775	Retaining Ring - Reel Coupling	1	
69	<b>R106-2633</b>	106-2633	Bolt - Hex Washer M10-1.5 x 16	2	
70	<b>R32120-93</b>	32120-93	Snap Ring - HD	2	
72	<b>R105-5740</b>	105-5740	Hook - Lift	1	
73	<b>R33115-025</b>	33115-025, 48-7780	Bolt - Hex HD M10-1.5 x 25	2	
74	<b>R3296-28</b>	119-4154, 140-9234, 32127-34, 32128-7, 32128-8, 32136-7, 3296-28	Nut - 1/2-20 ESNA Jam	2	
<i>Tech Note: Fits 2010-2011:</i>					
75	<b>R117-9493</b>	117-9493	Bolt - Bed Bar - Hardened	2	
<i>Tech Note: Fits 2010-2011:</i>					
76	<b>R119-3577-01</b>	119-3577-01	Shield-Grass	1	

All original equipment manufacturers names and part numbers are used for identification purposes only, and we are in no way implying that our products are original equipment parts. Prices subject to change without notice.