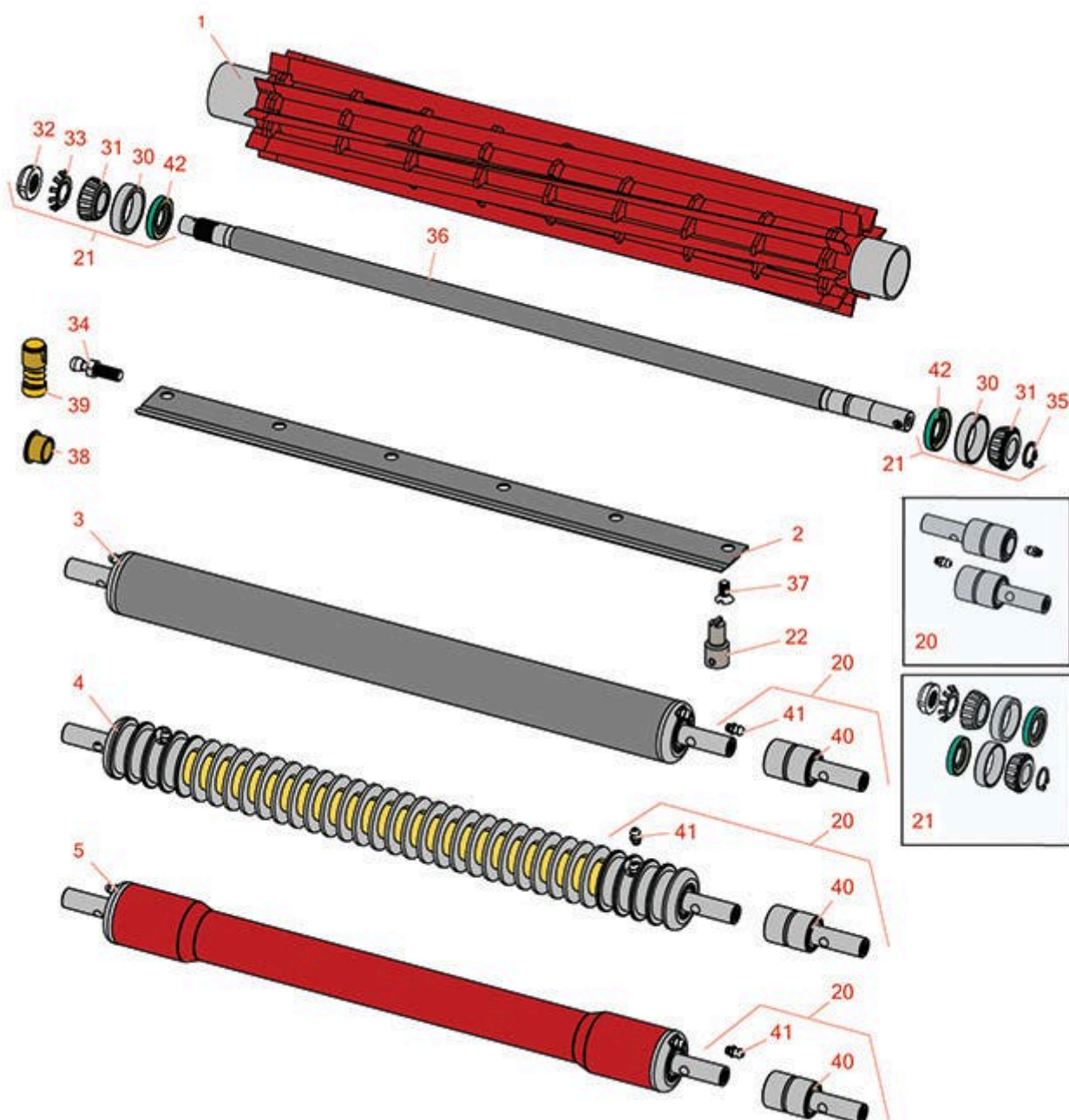




# Replaces Toro Greensmaster 21" Parts

Cutting Unit  
Reel & Bedknife



All original equipment manufacturers names and part numbers are used for identification purposes only, and we are in no way implying that our products are original equipment parts. Prices subject to change without notice.



# Replaces Toro Greensmaster 21" Parts

Cutting Unit  
Reel & Bedknife



Item No	R&R Part No.	OEM Part No.	Description	Qty Req	Order Quantity
---------	--------------	--------------	-------------	---------	----------------

## R&R Reels, Lifetime Guaranteed

1	R4-2219	4-2219, 5-0510, 5-0725, 5-1396, Mar-30, Mar-40, Mar-80, Mar-95, May-03	Reel - 9 Blade	1	
---	---------	--	----------------	---	--

*Detail Description:* R&R Reel blades are expertly crafted from premium high carbon-boron alloy steel, heat-treated to perfectly complement both R&R and OEM bedknives. Each reel undergoes precision cylindrical grinding on bearing surfaces, followed by relief grinding for optimal performance. Advanced computer balancing ensures extended reel and bearing life. Backed by our lifetime guarantee against defects in materials and craftsmanship under normal use, R&R Reels deliver unmatched durability and cutting precision you can trust.:

## R&R Bedknives, Lifetime Guaranteed

2	R150472	3-4054, 3-5794, 88-8990	Bedknife - Thin	1	
---	---------	-------------------------------	-----------------	---	--

*Detail Description:* R&R Bedknives are manufactured from high carbon-boron alloy steel and then hardened to RC46-49 to match the temper of our reel blades and original equipment reels. Bedknives are surface ground on the top and front edge and straightened three times before being packaged with oil for rust prevention. All R&R Bedknives now have an increased front edge grind for added life. All R&R Bedknives are guaranteed against defects in material and workmanship under normal use for the life of the part.:

2	R88-9000	3-0575, 3-2056, 3-3424, 3-4055, 88-9000, Mar-24, Mar-55, Mar-56	Bedknife - Tournament 1/16	1	
---	----------	--	----------------------------	---	--

All original equipment manufacturers names and part numbers are used for identification purposes only, and we are in no way implying that our products are original equipment parts. Prices subject to change without notice.



# Replaces Toro Greensmaster 21" Parts

Cutting Unit  
Reel & Bedknife



Item No	R&R Part No.	OEM Part No.	Description	Qty Req	Order Quantity
---------	--------------	--------------	-------------	---------	----------------

*Detail Description: R&R Bedknives are manufactured from high carbon-boron alloy steel and then hardened to RC46-49 to match the temper of our reel blades and original equipment reels. Bedknives are surface ground on the top and front edge and straightened three times before being packaged with oil for rust prevention. All R&R Bedknives now have an increased front edge grind for added life. All R&R Bedknives are guaranteed against defects in material and workmanship under normal use for the life of the part.:*

## R&R Rollers

3	R150600	5-1382	Roller - Smooth Tubular Steel	1
---	---------	--------	-------------------------------	---

*Detail Description: This tubular steel roller uses greasable "water-pump" style bearings.:*

4	R150601		Roller - Grooved Repairable Steel	1
---	---------	--	-----------------------------------	---

*Detail Description: Constructed with greasable "water-pump" style bearings, this roller can be repaired by unscrewing the ends and replacing the series of washers and spacers.:*

5	R150602		Roller - Swagged Tubular Steel	1
---	---------	--	--------------------------------	---

*Detail Description: Constructed with "water-pump" style bearings. This steel tubular roller contacts the ground only on the outer 2-7/8" of the roller.:*

## Overhaul Kits & Service Tools

20	R107-1588	107-1588	Overhaul Kit - Roller	0
----	-----------	----------	-----------------------	---

*Detail Description: Includes 2 ea.: R302-5 Grease Fittings & R52-3180 Bearings:*

21	R100170		Overhaul Kit - Cutting Unit	0
----	---------	--	-----------------------------	---

*Detail Description: Includes 2 ea.: R253-120 Seals, R254-67 Bearing Cups, R254-68 Bearing Cones; 1 ea.: R254-86 Locknut, R254-87 Washer, & R32151-12 Retaining Ring:*

22	R51-0880	51-0880	Bedknife Screw Driver Tool	0
----	----------	---------	----------------------------	---

*Detail Description: Easily install and remove bed knife screws with the help of a ratchet with 3/8" drive. Tool manufactured with hardened alloy steel.:*

## Other Parts Available

30	R254-67	254-67, 62-3360	Cup - Bearing	2
----	---------	--------------------	---------------	---

All original equipment manufacturers names and part numbers are used for identification purposes only, and we are in no way implying that our products are original equipment parts. Prices subject to change without notice.



# Replaces Toro Greensmaster 21" Parts

Cutting Unit  
Reel & Bedknife



Item No	R&R Part No.	OEM Part No.	Description	Qty Req	Order Quantity
31	<b>R254-68</b>	254-68, 62-3370	Tapered Bearing Cone	2	
32	<b>R254-86</b>	254-86	Nut - Lock Reel	1	
33	<b>R254-87</b>	254-87	Washer - Reel Assy.	1	
34	<b>R94-2958</b>	94-2958	Stud - Alloy Ball Joint	2	
35	<b>R32151-12</b>	32151-12	Ring - Retaining 11/16	1	
36	<b>R5-1393</b>	5-1393	Shaft - Reel	1	
37	<b>R150475</b>	3-6462	Screw - Bedknife Stainless 5/16-18 x 5/8	6	
<i>Detail Description: Pre-Packaged in bags of 50:</i>					
37	<b>R150476</b>	3-3816, 3-6462, 57-4910	Screw - Bedknife 5/16-18 x 5/8	6	
38	<b>R3-1506</b>	256-287, 3-1506, 75-2160, Apr-50	Bushing - Bronze	2	
39	<b>R99-1460</b>	2411-28, 2411-29, 2411-30, 2411-8, 8-7710, 94-2959, 99-1460	Receiver - Ball Joint	2	
40	<b>R52-3180</b>	21-6410, 52-3180	Bearing - Front Roller	2	

All original equipment manufacturers names and part numbers are used for identification purposes only, and we are in no way implying that our products are original equipment parts. Prices subject to change without notice.



# Replaces Toro Greensmaster 21" Parts

Cutting Unit  
Reel & Bedknife



Item No	R&R Part No.	OEM Part No.	Description	Qty Req	Order Quantity
41	R302-5	21-6010, 302-11, 302-37, 302-47, 302-5, 302-57, 302-58, 302-6, 31-0300, 32-9660, 60-0800, 62-3880, 92-4181	Fitting - Grease	2	
42	R253-120	253-120, 253-42	Seal	2	

All original equipment manufacturers names and part numbers are used for identification purposes only, and we are in no way implying that our products are original equipment parts. Prices subject to change without notice.