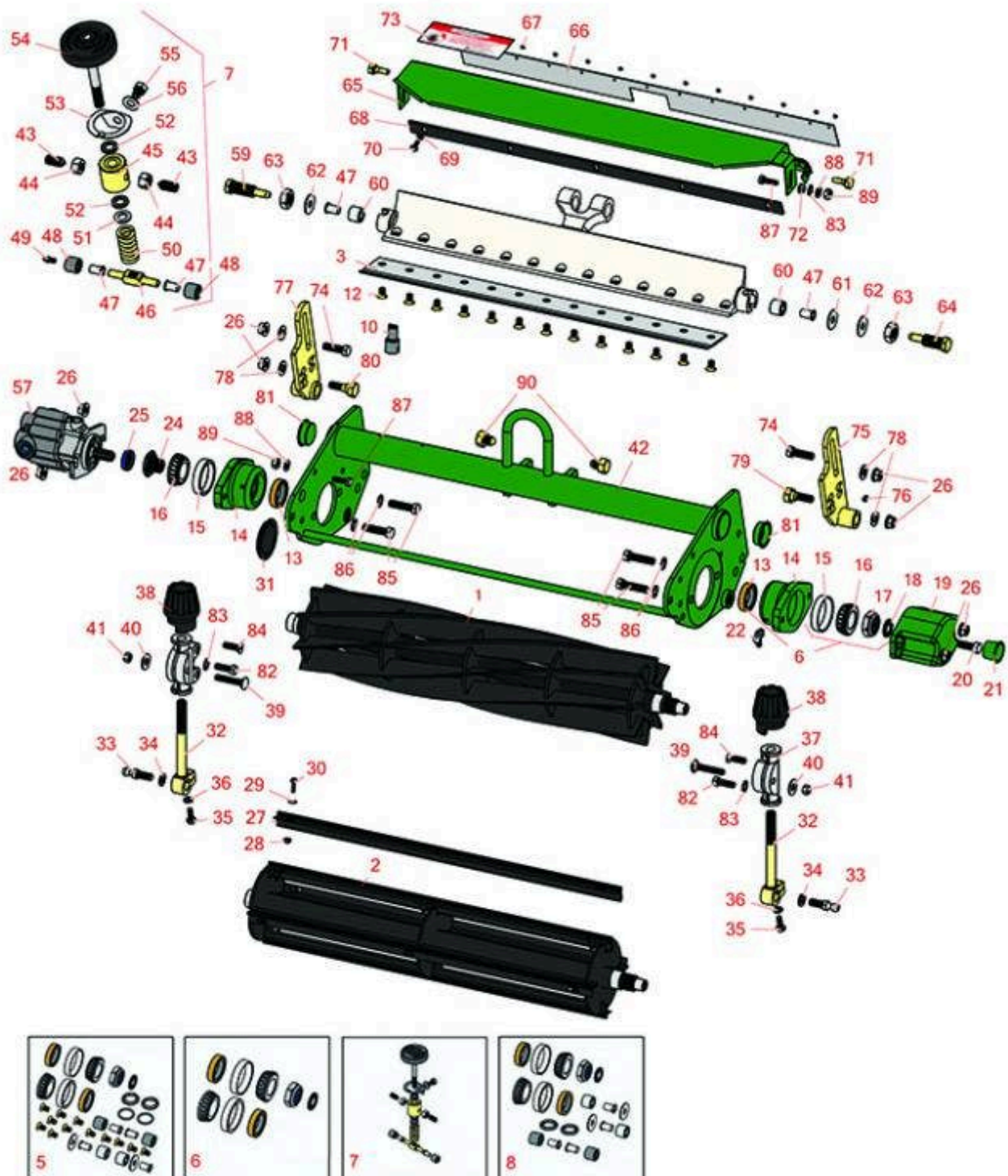




# Replaces R&R Products Versa-Green

## 1860 Parts

Single Point Cutting Unit  
Reel & Bedknife



All original equipment manufacturers names and part numbers are used for identification purposes only, and we are in no way implying that our products are original equipment parts. Prices subject to change without notice.



# Replaces R&R Products Versa-Green

## 1860 Parts

Single Point Cutting Unit

Reel & Bedknife



Item No	R&R Part No.	OEM Part No.	Description	Qty Req	Order Quantity
---------	--------------	--------------	-------------	---------	----------------

### R&R Reels, Lifetime Guaranteed

1	<b>R5-3189</b>	R12-3599, R130-6469	Reel - 8 Blade	1	
---	----------------	------------------------	----------------	---	--

*Detail Description: R&R Reel blades are expertly crafted from premium high carbon-boron alloy steel, heat-treated to perfectly complement both R&R and OEM bedknives. Each reel undergoes precision cylindrical grinding on bearing surfaces, followed by relief grinding for optimal performance. Advanced computer balancing ensures extended reel and bearing life. Backed by our lifetime guarantee against defects in materials and craftsmanship under normal use, R&R Reels deliver unmatched durability and cutting precision you can trust.:*

1	<b>R5-3189H</b>		Reel - 8 Blade Heavy Duty	1	
---	-----------------	--	---------------------------	---	--

*Detail Description: R&R Reel blades are expertly crafted from premium high carbon-boron alloy steel, heat-treated to perfectly complement both R&R and OEM bedknives. Each reel undergoes precision cylindrical grinding on bearing surfaces, followed by relief grinding for optimal performance. Advanced computer balancing ensures extended reel and bearing life. Backed by our lifetime guarantee against defects in materials and craftsmanship under normal use, R&R Reels deliver unmatched durability and cutting precision you can trust.:*

1	<b>R5-3195</b>		Reel - 9 Blade	1	
---	----------------	--	----------------	---	--

*Detail Description: R&R Reel blades are expertly crafted from premium high carbon-boron alloy steel, heat-treated to perfectly complement both R&R and OEM bedknives. Each reel undergoes precision cylindrical grinding on bearing surfaces, followed by relief grinding for optimal performance. Advanced computer balancing ensures extended reel and bearing life. Backed by our lifetime guarantee against defects in materials and craftsmanship under normal use, R&R Reels deliver unmatched durability and cutting precision you can trust.:*

1	<b>R5-3200</b>		Reel - 4 Blade	1	
---	----------------	--	----------------	---	--

*Detail Description: R&R Reel blades are expertly crafted from premium high carbon-boron alloy steel, heat-treated to perfectly complement both R&R and OEM bedknives. Each reel undergoes precision cylindrical grinding on bearing surfaces, followed by relief grinding for optimal performance. Advanced computer balancing ensures extended reel and bearing life. Backed by our lifetime guarantee against defects in materials and craftsmanship under normal use, R&R Reels deliver unmatched durability and cutting precision you can trust.:*

1	<b>R5-3205</b>	R12-0279, R12-0729, R12-8779	Reel - 5 Blade	1	
---	----------------	------------------------------------	----------------	---	--

All original equipment manufacturers names and part numbers are used for identification purposes only, and we are in no way implying that our products are original equipment parts. Prices subject to change without notice.



# Replaces R&R Products Versa-Green

## 1860 Parts

Single Point Cutting Unit  
Reel & Bedknife



Item No	R&R Part No.	OEM Part No.	Description	Qty Req	Order Quantity
---------	--------------	--------------	-------------	---------	----------------

*Detail Description: R&R Reel blades are expertly crafted from premium high carbon-boron alloy steel, heat-treated to perfectly complement both R&R and OEM bedknives. Each reel undergoes precision cylindrical grinding on bearing surfaces, followed by relief grinding for optimal performance. Advanced computer balancing ensures extended reel and bearing life. Backed by our lifetime guarantee against defects in materials and craftsmanship under normal use, R&R Reels deliver unmatched durability and cutting precision you can trust.:*

1	<b>R5-3206</b>		Reel - 6 Blade	1
---	----------------	--	----------------	---

*Detail Description: R&R Reel blades are expertly crafted from premium high carbon-boron alloy steel, heat-treated to perfectly complement both R&R and OEM bedknives. Each reel undergoes precision cylindrical grinding on bearing surfaces, followed by relief grinding for optimal performance. Advanced computer balancing ensures extended reel and bearing life. Backed by our lifetime guarantee against defects in materials and craftsmanship under normal use, R&R Reels deliver unmatched durability and cutting precision you can trust.:*

1	<b>R5-3215</b>		Reel - 5 Blade Heavy Duty	1
---	----------------	--	---------------------------	---

*Detail Description: R&R Reel blades are expertly crafted from premium high carbon-boron alloy steel, heat-treated to perfectly complement both R&R and OEM bedknives. Each reel undergoes precision cylindrical grinding on bearing surfaces, followed by relief grinding for optimal performance. Advanced computer balancing ensures extended reel and bearing life. Backed by our lifetime guarantee against defects in materials and craftsmanship under normal use, R&R Reels deliver unmatched durability and cutting precision you can trust.:*

1	<b>R12-2789</b>	R130-6470	Reel - 11 Blade	1
---	-----------------	-----------	-----------------	---

*Detail Description: R&R Reel blades are manufactured from high carbon-boron alloy steel and then hardened to RC46-49 to match the temper of our bedknives and original equipment bedknives. All R&R Reels are cylindrically ground on bearing surfaces and then relief ground. Reels are then precision computer balanced for extended bearing and reel life. R&R Products Reels are guaranteed against defects in material and workmanship for the life of the reel under normal use.:*

2	<b>R150480</b>		Brush Reel	1
---	----------------	--	------------	---

All original equipment manufacturers names and part numbers are used for identification purposes only, and we are in no way implying that our products are original equipment parts. Prices subject to change without notice.



# Replaces R&R Products Versa-Green

## 1860 Parts

Single Point Cutting Unit

Reel & Bedknife



Item No	R&R Part No.	OEM Part No.	Description	Qty Req	Order Quantity
---------	--------------	--------------	-------------	---------	----------------

***Detail Description:** R&R Products Brush Reels are an exciting concept in greens maintenance to clean sand and other debris left on grass surfaces after top dressing. If left on the turf, this sand and debris can cause dulling and excessive wear on mowing reels and bed knives. However, with the use of R&R Brush Reels, sand and debris are easily swept into conventional grass baskets. R&R Brush Reels are also used to stand turf up before mowing to give a cleaner, more uniform and truer putting surface. Designed with four replaceable brushes mounted in a metal frame, simply replace regular mowing reels with R&R Brush Reels and adjust bedknife to clear the brushes. The height of cut should be set to the top of the grass blades or slightly below. \*Remove bedknife for the removal of pine needles.<BR><BR>**SUGGESTED USAGE:** Verticutting - Dew Removal - Leaf Clean Up - Thatch Prevention Prior to Overseeding - Grooming before Mowing - Removal of Excessive Top Dressing:*

### **R&R Bedknives, Lifetime Guaranteed**

3	<b>R150466</b>	R63-8600, R94-6393	Bedknife - Super Thick .312 - 1.00 HOC	1
---	----------------	-----------------------	--	---

***Detail Description:** R&R Bedknives are manufactured from high carbon-boron alloy steel and then hardened to RC46-49 to match the temper of our reel blades and original equipment reels. Bedknives are surface ground on the top and front edge and straightened three times before being packaged with oil for rust prevention. All R&R Bedknives now have an increased front edge grind for added life. All R&R Bedknives are guaranteed against defects in material and workmanship under normal use for the life of the part.:*

3	<b>R94-6392</b>	R57-4970, R62-2500	Bedknife - High Cut .312 - 1.00 HOC	1
---	-----------------	-----------------------	-------------------------------------	---

***Detail Description:** R&R Bedknives are manufactured from high carbon-boron alloy steel and then hardened to RC46-49 to match the temper of our reel blades and original equipment reels. Bedknives are surface ground on the top and front edge and straightened three times before being packaged with oil for rust prevention. All R&R Bedknives now have an increased front edge grind for added life. All R&R Bedknives are guaranteed against defects in material and workmanship under normal use for the life of the part.:*

3	<b>R93-4264</b>	R57-4960, R63-8470	Bedknife - Low Cut .187 - 1.00 HOC	1
---	-----------------	-----------------------	------------------------------------	---

***Detail Description:** R&R Bedknives are manufactured from high carbon-boron alloy steel and then hardened to RC46-49 to match the temper of our reel blades and original equipment reels. Bedknives are surface ground on the top and front edge and straightened three times before being packaged with oil for rust prevention. All R&R Bedknives now have an increased front edge grind for added life. All R&R Bedknives are guaranteed against defects in material and workmanship under normal use for the life of the part.:*

All original equipment manufacturers names and part numbers are used for identification purposes only, and we are in no way implying that our products are original equipment parts. Prices subject to change without notice.





# Replaces R&R Products Versa-Green

## 1860 Parts

Single Point Cutting Unit  
Reel & Bedknife



Item No	R&R Part No.	OEM Part No.	Description	Qty Req	Order Quantity
---------	--------------	--------------	-------------	---------	----------------

3	R93-4263	R57-4980, R63-8560, R66-9320, R93-6039	Bedknife - Tournament Cut .125 - .500 HOC	1	
---	----------	---	--	---	--

*Detail Description:* R&R Bedknives are manufactured from high carbon-boron alloy steel and then hardened to RC46-49 to match the temper of our reel blades and original equipment reels. Bedknives are surface ground on the top and front edge and straightened three times before being packaged with oil for rust prevention. All R&R Bedknives now have an increased front edge grind for added life. All R&R Bedknives are guaranteed against defects in material and workmanship under normal use for the life of the part.:

3	R93-4262	R62-8250, R65-8250	Bedknife - Micro Cut .062 - .187 HOC	0	
---	----------	-----------------------	---	---	--

*Detail Description:* R&R Bedknives are manufactured from high carbon-boron alloy steel and then hardened to RC46-49 to match the temper of our reel blades and original equipment reels. Bedknives are surface ground on the top and front edge and straightened three times before being packaged with oil for rust prevention. All R&R Bedknives now have an increased front edge grind for added life. All R&R Bedknives are guaranteed against defects in material and workmanship under normal use for the life of the part.:

### R&R Razor Tool Steel Bedknives, Lifetime Guaranteed

3	R115-1881		Bedknife - Razor Tool Steel - 21 Tournament Cut .125 - .500 HOC	1	
---	-----------	--	---	---	--

*Detail Description:* R&R Razor bedknives are manufactured from premium alloy tool steel steel and then hardened to RC48-51 to match the temper of our Razor reel blades and original equipment premium series reels. Bedknives are surface ground on the top and front edge and specially packaged for rust prevention. All R&R Bedknives now have an increased front edge grind for added life. All R&R Bedknives are guaranteed against defects in material and workmanship under normal use for the life of the part. You can expect up to double the life over standard bedknives.:

3	R115-1880		Bedknife - Razor Tool Steel - 21 Micro Cut .062 - .187 HOC	1	
---	-----------	--	---	---	--

*Detail Description:* R&R Razor bedknives are manufactured from premium alloy tool steel steel and then hardened to RC48-51 to match the temper of our Razor reel blades and original equipment premium series reels. Bedknives are surface ground on the top and front edge and specially packaged for rust prevention. All R&R Bedknives now have an increased front edge grind for added life. All R&R Bedknives are guaranteed against defects in material and workmanship under normal use for the life of the part. You can expect up to double the life over standard bedknives.:

All original equipment manufacturers names and part numbers are used for identification purposes only, and we are in no way implying that our products are original equipment parts. Prices subject to change without notice.



# Replaces R&R Products Versa-Green

## 1860 Parts

Single Point Cutting Unit  
Reel & Bedknife



Item No	R&R Part No.	OEM Part No.	Description	Qty Req	Order Quantity
---------	--------------	--------------	-------------	---------	----------------

### Overhaul Kits

5	<b>R13-3659</b>		Overhaul Kit - Cutting Unit	0	
<i>Detail Description: Includes 13 ea.: R150477 Screws; 4 ea.: R52-2890 Bushings; 2 ea.: R237-77 O-rings, R253-96 Seals, R254-72 Bearing Cups, R254-94 Bearings, R52-2900 Washers, R57-5280 Bearings, R62-5510 Bushings, R63-9510 Bushings; 1 ea.: R253-61 Seal &amp; R32127-46 Locknut:</i>					
6	<b>R107-1590</b>		Overhaul Kit - Cutting Unit	0	
<i>Detail Description: Includes 2 ea.: R253-96 Seals, R254-72 Bearing Cups, R254-94 Bearings; 1 ea.: R253-61 Seal &amp; R32127-46 Locknut:</i>					
7	<b>R255-311</b>		Kit - Micro Adjusting	0	
<i>Detail Description: Includes 2 ea: R443818 Nut, R52-2890 Bushing, R57-5190 Screw, R62-5510 Bushing, R77-0350 Retainer; 1 ea: R187-0 Washer, R257-5 Washer, R52-2990 Bolt, R57-5260 Pivot, R66-7220 Arm, R66-7230 Spring, R77-0300 Handle, R77-0330 Housing:</i>					
8	<b>R255-310</b>		Overhaul Kit - Cutting Unit	0	
<i>Detail Description: Includes 4 ea: R52-2890 Bushings; 2 ea: R237-77 O-Rings, R253-96 Seals, R254-72 Cups, R254-94 Bearings, R52-2900 Washers, R57-5280 Bearings, R62-5510 Bushings, R63-9510 Bushings; 1 ea: R253-61 Seal &amp; R32127-46 Locknut:</i>					

### Service Tools

10	<b>R51-0880</b>		Bedknife Screw Driver Tool	0	
<i>Detail Description: Easily install and remove bed knife screws with the help of a ratchet with 3/8" drive. Tool manufactured with hardened alloy steel.:</i>					

### Other Parts Available

12	<b>R150477</b>	R64249-01, RA119001	Screw - Bedknife 5/16-18 x 1/2	13	
12	<b>R150476</b>	R170476, R3-3816, R52-4910, R57-4910	Screw - Bedknife 5/16-18 x 5/8	13	
13	<b>R253-96</b>		Seal - Oil Single Lip Reel	2	

All original equipment manufacturers names and part numbers are used for identification purposes only, and we are in no way implying that our products are original equipment parts. Prices subject to change without notice.



# Replaces R&R Products Versa-Green

## 1860 Parts

Single Point Cutting Unit  
Reel & Bedknife



Item No	R&R Part No.	OEM Part No.	Description	Qty Req	Order Quantity
14	<b>R10-5120G</b>		Housing - Bearing Reel - Green	2	
<i>Detail Description: Includes R253-96, R254-72 &amp; R302-5:</i>					
15	<b>R254-72</b>	R01-103-0050, R01-103-0120, R01-103-0140, R1-543508, R254-71, R313456, R40439, R521744, R62-3340, R814474, R99-4511, RJD8253	Cup - Bearing	2	
16	<b>R254-94</b>	R1-543509, R313089, R32-8090, R32-8240, R32-9640, R40440, R521494, R62-3330, R814473, RJD8933, RTCU37582	Tapered Bearing Cone	2	
17	<b>R32127-46</b>	R3296-60	Locknut	1	
18	<b>R253-61</b>		Seal - Oil Reel	1	
19	<b>R10-5080G</b>		Roller End - Cap Reel Brg Housing - Green	1	
20	<b>R323-2</b>	R01-178-0604	Bolt - Hex HD 3/8-16 x 1	1	
21	<b>R12-0460</b>		Caplug - End Cap	1	
22	<b>R302-40</b>	R302-13	Fitting - Grease	1	
24	<b>R77-0340</b>		Nut - Splined Reel	1	

All original equipment manufacturers names and part numbers are used for identification purposes only, and we are in no way implying that our products are original equipment parts. Prices subject to change without notice.



# Replaces R&R Products Versa-Green

## 1860 Parts

Single Point Cutting Unit  
Reel & Bedknife



Item No	R&R Part No.	OEM Part No.	Description	Qty Req	Order Quantity
25	R353-585	R353-469, R353-587, R354-34, R45401-2, R500843, R72-4380, R75-1210, R75-1270, R92-8863, R92-8864	Seal - High Pressure - Reel Motor	1	
26	R3296-39	3296-39, R32127-25, R32128-36, R3296-17, R3296-22, R915663P, R99-7443	Locknut - 3/8-16 Nylon	8	
27	R150481		Brush Assy - Brush Reel	4	
28	R3296-9	R32127-17	Locknut - Comb	12	
29	R150426		Washer - 8 SAE	12	
30	R150425		Bolt - Hex HD 8-32 x 5/8	12	
31	R150485	R2410-30	Cap - Protective Bearing Housing	1	
32	R10-5010		Screw - Roller Adjustment	2	
33	R94-2958	R2411-7	Stud - Alloy Ball Joint	2	
34	R3254-6	446142, R01-166-0010, R01-166-0280, R01-166-0610, R12H304, R3253-5, R3254-18, R3290-223, R446140, R446142, R48-9370	Washer - Lock 3/8	4	

All original equipment manufacturers names and part numbers are used for identification purposes only, and we are in no way implying that our products are original equipment parts. Prices subject to change without notice.





# Replaces R&R Products Versa-Green

## 1860 Parts

Single Point Cutting Unit  
Reel & Bedknife



Item No	R&R Part No.	OEM Part No.	Description	Qty Req	Order Quantity
35	R321-4	400108, R01-150-1030, R01-178-0406, R20-3-AGD, R3222-1, R400108	Bolt - Hex HD 1/4-20 x 3/4	2	
36	R3253-3	446130, R01-166-0070, R01-166-0410, R23-9-GD, R24-7150, R352-167, R446128, R446130	Washer - Lock 1/4	2	
37	R10-5060		Bracket - Roller Adj	2	
38	R65-8600	R10-5040	Knob - Height Adjusting	2	
39	R441674	R01-173-0514, R01-173-0516, R3-7253, R3230-5	Screw - 5/16-18 x 1-3/4 Carriage	2	
40	R453009	3256-3, R01-166-0400, R24-10-BD, R24-9-AD, R24H1136, R32-9650, R3256-2, R3256-23, R3256-67, R3290-217, R3556-3, R4-2390, R452006, R7-0152	Washer - Flat 5/16 SAE	2	
40	R310266	3256-3, R09056, R452004	Washer - Flat 5/16 USS	2	

All original equipment manufacturers names and part numbers are used for identification purposes only, and we are in no way implying that our products are original equipment parts. Prices subject to change without notice.



# Replaces R&R Products Versa-Green

## 1860 Parts

Single Point Cutting Unit  
Reel & Bedknife



Item No	R&R Part No.	OEM Part No.	Description	Qty Req	Order Quantity
41	R32153-3	R119-4038, R22-12-AJFD, R32127-35, R32146-5, R3296-18, R3296-31, RJ317000	Locknut - 5/16-18 ESNA Zinc	2	
42	R70-1200G		Frame - Single Point Adj. - Green	1	
43	R57-5190	R32110-19	Screw - Adjusting	2	
44	R443818	R01-191-0813, R3218-18, R3218-5	Nut - 1/2-13 Hex Jam Zinc	2	
45	R77-0330		Housing - Pivot Spa	1	
46	R57-5260	R107-7409	Pivot - 1/2-20 - Bed Bar	1	
47	R52-2890		Bushing - Flanged	4	
48	R62-5510	R52-2870, R52-2880	Bushing	2	
49	R302-18		Zerk - Grease Press Style	1	
50	R66-7230		Spring - Compression	1	
51	R257-5	257-5	Washer - Thrust	1	
52	R77-0350		Retainer - Bearing	2	
53	R66-7220		Arm - Spring Handle Assy	1	
54	R77-0300	R77-0300-01	Handle Assy	1	
55	R52-2990	R324-25	Bolt - Spring Retainer	1	
56	R187-0	3256-25, R3256-25, R7-0032	Washer - Flat 7/16 SAE	1	

All original equipment manufacturers names and part numbers are used for identification purposes only, and we are in no way implying that our products are original equipment parts. Prices subject to change without notice.



# Replaces R&R Products Versa-Green

## 1860 Parts

Single Point Cutting Unit  
Reel & Bedknife



Item No	R&R Part No.	OEM Part No.	Description	Qty Req	Order Quantity
57	R105-9770	R10-5090, R26-5690, R70-9800, R94-3506, R94-3507	Hydraulic Motor - Reel Quick Release	1	
59	R52-2930		Bolt - Bed Bar	1	
60	R63-9510	R63-9480	Bushing - Rubber For Bed Bar	2	
61	R52-2860	R119-4150	Washer - Bed Bar Pivot	1	
62	R52-2900		Washer - Nylon	2	
63	R443828	R01-191-1018, R3220-6, R915089P	Nut - 5/8-18 Hex	2	
64	R52-2910		Bolt - Eccentric Bed Bar	1	
65	R57-5200S		Shield - Grass - Stainless	1	
66	R57-5210		Deflector - Styrene	1	
67	R3295-46		Tube - Rivet Smi Grass Shield	13	
68	R36-7260		Bar - Cut Off Grass Shield	1	
69	R3256-14	R24-7-BD, R297-3, R32125-2, R3256-51, R51-2170	Washer - 10 Flat	5	
70	R32144-73	R104-2065	Screw - Machine Hex Washer Head	5	
71	R57-9910		Bolt - Pivot	2	
72	R237-84		Grommet - Rubber	2	
73	R354083	R104-7729, R361877	Decal - Danger	1	

All original equipment manufacturers names and part numbers are used for identification purposes only, and we are in no way implying that our products are original equipment parts. Prices subject to change without notice.



# Replaces R&R Products Versa-Green

## 1860 Parts

Single Point Cutting Unit

Reel & Bedknife



Item No	R&R Part No.	OEM Part No.	Description	Qty Req	Order Quantity
74	R400264	323-7, R01-150-0180, R01-178-0610, R19H1732, R20-48-AD, R20-48-AGD, R32-9160, R3224-3, R323-29, R323-7, R400264, R908035P	Bolt - Hex HD 3/8-16 x 1-1/4	2	
75	R52-3090	R77-1080, R99-5654	Bracket - LH Rear Roller	1	
76	R3290-125		Screw - Set 1/4-20 x 5/16	2	
77	R52-3060	R77-1060, R99-5653	Bracket - RH Rear Roller	1	
78	R453011	3256-24, 453011, R01-166-0100, R01-166-0120, R01-166-0270, R01-166-0500, R01-166-0600, R01-166-0620, R132-4593, R237-12, R24-10-AD, R24-11-AD, R24-11-BD, R24-12-AD, R24-12-BD, R30-9310, R32-8190, R3256-24, R3256-3, R3256-36, R3256-4, R47-9950	Washer - Flat 3/8 SAE Y/Zinc	4	
79	R52-3100		Bolt - Eccentric Shoulder LH	1	

All original equipment manufacturers names and part numbers are used for identification purposes only, and we are in no way implying that our products are original equipment parts. Prices subject to change without notice.



# Replaces R&R Products Versa-Green

## 1860 Parts

Single Point Cutting Unit  
Reel & Bedknife



Item No	R&R Part No.	OEM Part No.	Description	Qty Req	Order Quantity
80	R52-3110		Bolt - Shoulder HOC RH	1	
81	R285-14		Plug - Pipe Frame	2	
82	R322-5	322-5, R01-178-0508, R19H1905, R20-26-AD, R20-26-AGD, R30-9000, R400188, R513341, R519755, R908019P	Bolt - Hex HD 5/16-18 x 1	2	
83	R3255-8		Washer - Lock 5/16 Ext	2	
84	R32108-20		Screw - Flat HD Cntrsunk	2	
85	R3290-316		Bolt - Hex Tap 3/8-16 x 1-1/2	4	
86	R3255-9	RF3077	Washer - Lock 3/8 Ext. Star	4	
87	R321-5	R321-31, R400110	Bolt - Hex HD 1/4-20 x 7/8	2	
88	R3256-22	R09061, R24-9-BD, R3-1032, R93-0954, R93-0989	Washer - Flat 1/4 Yellow	2	
89	R301504	R32127-24, R32146-17, R3296-16, R3296-42, R915661P, RM40333	Locknut - ESNA 1/4-20	2	
90	R66-7240		Bolt - Single Point Adjust.	2	

All original equipment manufacturers names and part numbers are used for identification purposes only, and we are in no way implying that our products are original equipment parts. Prices subject to change without notice.