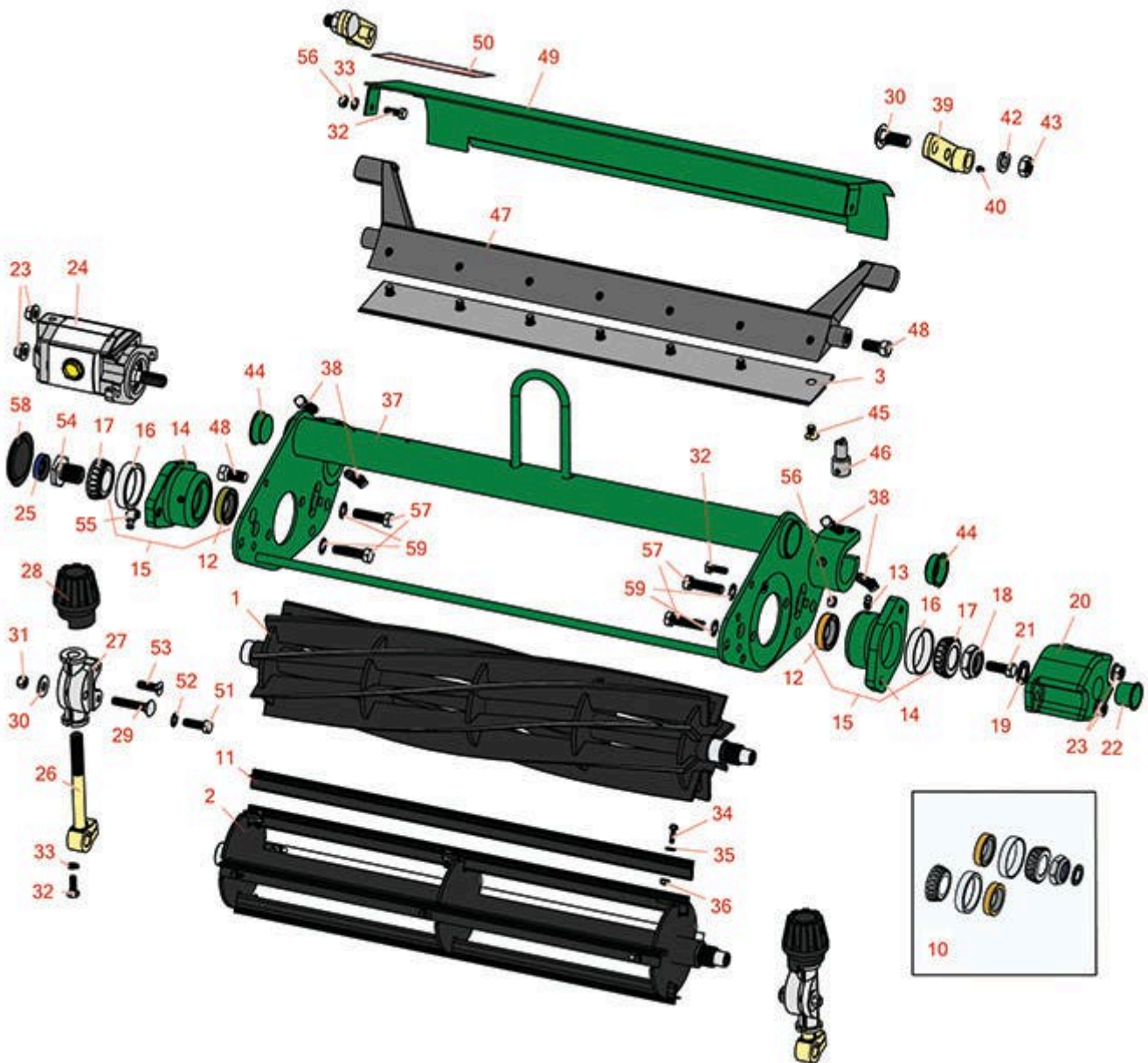




Replaces R&R Products Versa-Green

1860 Parts

4 Bolt Cutting Unit
Reel & Bedknife



All original equipment manufacturers names and part numbers are used for identification purposes only, and we are in no way implying that our products are original equipment parts. Prices subject to change without notice.



Replaces R&R Products Versa-Green

1860 Parts

4 Bolt Cutting Unit
Reel & Bedknife



Item No	R&R Part No.	OEM Part No.	Description	Qty Req	Order Quantity
R&R Reels, Lifetime Guaranteed					
1	R5-3189	R12-3599, R130-6469	Reel - 8 Blade	1	
1	R5-3189H		Reel - 8 Blade Heavy Duty	1	
1	R5-3195		Reel - 9 Blade	1	
1	R5-3200		Reel - 4 Blade	1	
1	R5-3205	R12-0279, R12-0729, R12-8779	Reel - 5 Blade	1	
1	R5-3206		Reel - 6 Blade	1	
1	R5-3215		Reel - 5 Blade Heavy Duty	1	
1	R12-2789	R130-6470	Reel - 11 Blade	1	
2	R150480		Brush Reel	1	
R&R Bedknives, Lifetime Guaranteed					
3	R93-4262	R62-8250, R65-8250	Bedknife - Micro Cut .062 - .187 HOC	1	
3	R94-6394	R150454, R150459, R51-2610, R63-8550	Bedknife - Tournament 1/8-1/2 HOC	1	
3	R94-6395	R150460, R150461, R17-1740, R17-7040, R19-8880, R62-2510, R63-8500	Bedknife - Low Cut 3/16"-1" HOC	1	
3	R150462		Bedknife - 7 Hole Thick 5/16	1	
3	R63-8610	R150463	Bedknife - Fairway Cut .375 - 1.00 HOC	1	

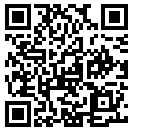
All original equipment manufacturers names and part numbers are used for identification purposes only, and we are in no way implying that our products are original equipment parts. Prices subject to change without notice.



Replaces R&R Products Versa-Green

1860 Parts

4 Bolt Cutting Unit
Reel & Bedknife



Item No	R&R Part No.	OEM Part No.	Description	Qty Req	Order Quantity
---------	--------------	--------------	-------------	---------	----------------

R&R Razor Tool Steel Bedknives, Lifetime Guaranteed

3	R115-1881		Bedknife - Razor Tool Steel - 21 Tournament Cut .125 - .500 HOC	1	
---	------------------	--	---	---	--

Tech Note: Razor Tool Steel Bedknives are constructed from high grade tool steel for extended life and optimum cut.:

3	R115-1880		Bedknife - Razor Tool Steel - 21 Micro Cut .062 - .187 HOC	1	
---	------------------	--	--	---	--

Tech Note: Razor Tool Steel Bedknives are constructed from high grade tool steel for extended life and optimum cut.:

Overhaul Kits

10	R107-1598		Overhaul Kit - Cutting Unit	1	
----	------------------	--	-----------------------------	---	--

Tech Note: Includes 2 ea.: R104-3388 Seals, R254-72 Bearing Cups & R254-94 Bearings; 1 ea: R253-61 Seal & R32127-46 Locknut:

Other Parts Available

11	R150481		Brush Assy - Brush Reel	4	
----	----------------	--	-------------------------	---	--

12	R104-3388		Seal - Double Lip Bearing Housing	2	
----	------------------	--	-----------------------------------	---	--

All original equipment manufacturers names and part numbers are used for identification purposes only, and we are in no way implying that our products are original equipment parts. Prices subject to change without notice.



Replaces R&R Products Versa-Green

1860 Parts

4 Bolt Cutting Unit
Reel & Bedknife



Item No	R&R Part No.	OEM Part No.	Description	Qty Req	Order Quantity
13	R302-5	R173-0, R21-6010, R255825, R302-37, R302-47, R302-57, R302-58, R302-6, R31-0300, R32-9660, R471214, R471223, R471226, R60-0800, R62-3880, R92-4181, RJD7797, RJD7842, RJD7844, RM0004	Fitting - Grease	6	
14	R10-5120G		Housing - Bearing Reel - Green	2	
<i>Tech Note: Includes R253-96, R254-72 & R302-5:</i>					
15	R104-3399G		Housing Assy - Bearing Reel - Green	2	
16	R254-72	R01-103-0050, R01-103-0120, R01-103-0140, R1-543508, R254-71, R313456, R40439, R521744, R62-3340, R814474, R99-4511, RJD8253	Cup - Bearing	2	

All original equipment manufacturers names and part numbers are used for identification purposes only, and we are in no way implying that our products are original equipment parts. Prices subject to change without notice.



Replaces R&R Products Versa-Green

1860 Parts

4 Bolt Cutting Unit
Reel & Bedknife



Item No	R&R Part No.	OEM Part No.	Description	Qty Req	Order Quantity
17	R254-94	R1-543509, R313089, R32-8090, R32-8240, R32-9640, R40440, R521494, R62-3330, R814473, RJD8933, RTCU37582	Tapered Bearing Cone	2	
18	R32127-46	R3296-60	Locknut	1	
19	R253-61		Seal - Oil Reel	1	
20	R10-5080G		Roller End - Cap Reel Brg Housing - Green	1	
21	R323-2	R01-178-0604	Bolt - Hex HD 3/8-16 x 1	1	
22	R12-0460		Caplug - End Cap	1	
23	R3296-39	3296-39, R32127-25, R32128-36, R3296-17, R3296-22, R915663P, R99-7443	Locknut - 3/8-16 Nylon	2	
24	R105-9770	R10-5090, R26-5690, R70-9800, R94-3506, R94-3507	Hydraulic Motor - Reel Quick Release	1	
25	R353-585	R353-469, R353-587, R354-34, R45401-2, R500843, R72-4380, R75-1210, R75-1270, R92-8863, R92-8864	Seal - High Pressure - Reel Motor	1	

All original equipment manufacturers names and part numbers are used for identification purposes only, and we are in no way implying that our products are original equipment parts. Prices subject to change without notice.



Replaces R&R Products Versa-Green

1860 Parts

4 Bolt Cutting Unit
Reel & Bedknife



Item No	R&R Part No.	OEM Part No.	Description	Qty Req	Order Quantity
26	R10-5010		Screw - Roller Adjustment	2	
27	R10-5060		Bracket - Roller Adj	2	
28	R65-8600	R10-5040	Knob - Height Adjusting	2	
29	R441674	R01-173-0514, R01-173-0516, R3-7253, R3230-5	Screw - 5/16-18 x 1-3/4 Carriage	2	
30	R453009	3256-3, R01-166-0400, R24-10-BD, R24-9-AD, R24H1136, R32-9650, R3256-2, R3256-23, R3256-67, R3290-217, R3556-3, R4-2390, R452006, R7-0152	Washer - Flat 5/16 SAE	2	
31	R32153-3	R119-4038, R22-12-AJFD, R32127-35, R32146-5, R3296-18, R3296-31, RJ317000	Locknut - 5/16-18 ESNA Zinc	2	
32	R321-4	400108, R01-150-1030, R01-178-0406, R20-3-AGD, R3222-1, R400108	Bolt - Hex HD 1/4-20 x 3/4	4	

All original equipment manufacturers names and part numbers are used for identification purposes only, and we are in no way implying that our products are original equipment parts. Prices subject to change without notice.



Replaces R&R Products Versa-Green

1860 Parts

4 Bolt Cutting Unit
Reel & Bedknife



Item No	R&R Part No.	OEM Part No.	Description	Qty Req	Order Quantity
33	R3253-3	446130, R01-166-0070, R01-166-0410, R23-9-GD, R24-7150, R352-167, R446128, R446130	Washer - Lock 1/4	4	
34	R150425		Bolt - Hex HD 8-32 x 5/8	12	
35	R150426		Washer - 8 SAE	12	
36	R3296-9	R32127-17	Locknut - Comb	12	
37	R70-1100G		Frame - Green	1	
38	R3243-13		Screw - Bed Bar Adjusting	4	
39	R27-2650		Height Adjustment Assy	2	
40	R3290-125		Screw - Set 1/4-20 x 5/16	2	
42	R3253-7	R01-166-0030, R01-166-0080, R01-166-0290, R01-166-0810, R23-13-GD, R48-9380	Washer - Lock 1/2	2	
43	R443118	R01-188-0813, R22-15-AJD, R3217-9	Nut - 1/2-13 Zinc	2	
44	R285-14		Plug - Pipe Frame	2	
45	R150475	R3-6462, R3-6642	Screw - Bedknife Stainless 5/16-18 x 5/8	7	
<i>Tech Note: Pre-Packaged in bags of 50:</i>					
45	R150476	R170476, R3-3816, R52-4910, R57-4910	Screw - Bedknife 5/16-18 x 5/8	7	

All original equipment manufacturers names and part numbers are used for identification purposes only, and we are in no way implying that our products are original equipment parts. Prices subject to change without notice.



Replaces R&R Products Versa-Green

1860 Parts

4 Bolt Cutting Unit
Reel & Bedknife



Item No	R&R Part No.	OEM Part No.	Description	Qty Req	Order Quantity
45	R150477	R64249-01, RA119001	Screw - Bedknife 5/16-18 x 1/2	7	
46	R51-0880		Bedknife Screw Driver Tool	1	
47	R10-4930	R10-4930-01, R10-4930B	Bed Bar	1	
48	R315298	R217-74, R31-1070	Bolt - Bed Bar	2	
49	R27-2620S		Shield - Grass Deflector -Stainless	1	
50	R354083	R104-7729, R361877	Decal - Danger	1	
51	R322-5	322-5, R01-178-0508, R19H1905, R20-26-AD, R20-26-AGD, R30-9000, R400188, R513341, R519755, R908019P	Bolt - Hex HD 5/16-18 x 1	2	
52	R3255-8		Washer - Lock 5/16 Ext	2	
53	R32108-20		Screw - Flat HD Cntrsunk	2	
54	R10-5100		Nut - Splined 1-1/8 Long	1	
55	R302-40	R302-13	Fitting - Grease	1	
56	R443102	R01-188-0420, R22-11-AJD, R3217-5	Nut - 1/4-20 Yellow Zinc	2	
57	R3290-316		Bolt - Hex Tap 3/8-16 x 1-1/2	4	
58	R150485	R2410-30	Cap - Protective Bearing Housing	1	
59	R3255-9	RF3077	Washer - Lock 3/8 Ext. Star	4	

All original equipment manufacturers names and part numbers are used for identification purposes only, and we are in no way implying that our products are original equipment parts. Prices subject to change without notice.