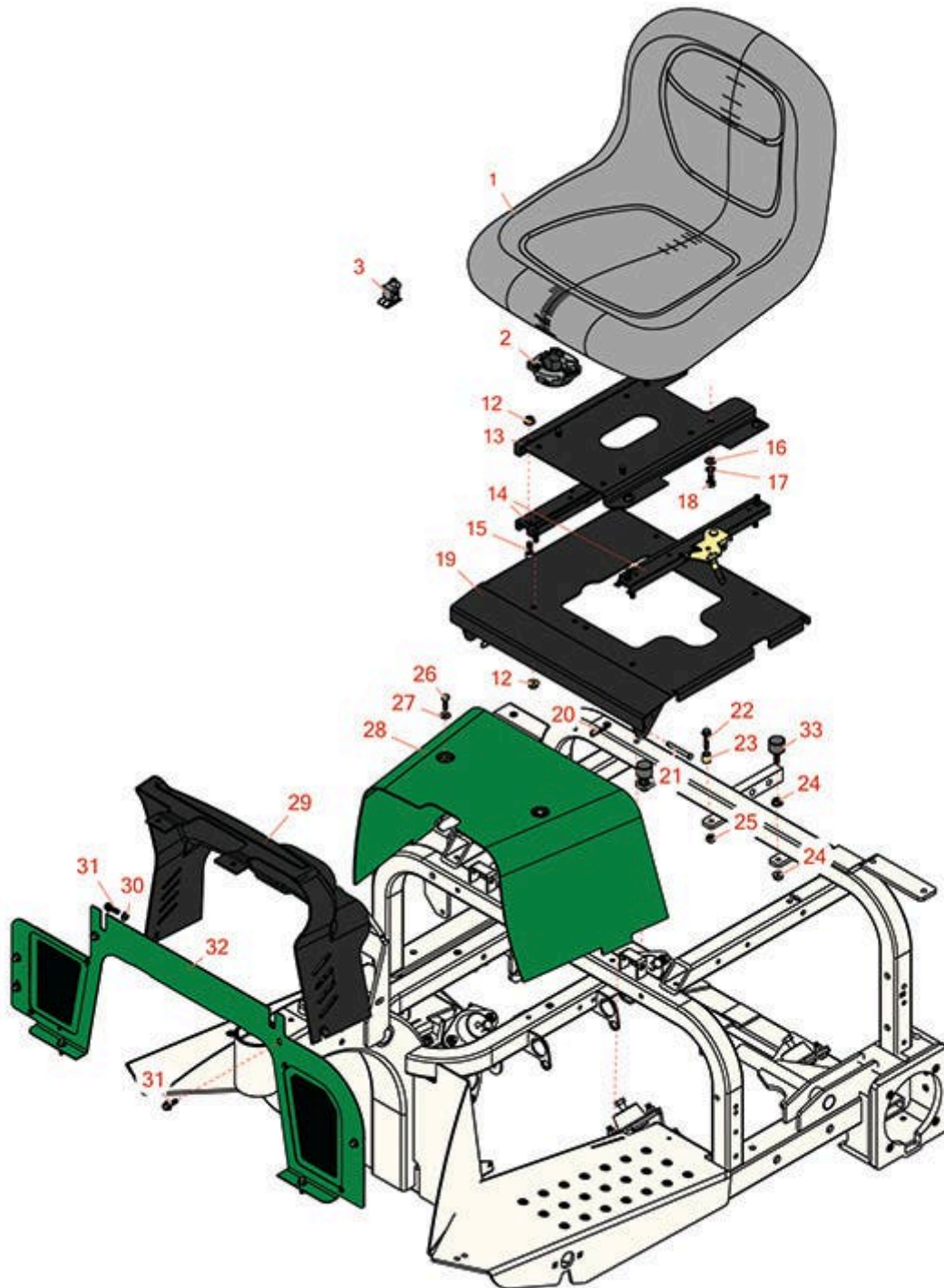




Replaces R&R Products Sand Max 518

Parts

*Traction Unit
Seat & Shroud*



All original equipment manufacturers names and part numbers are used for identification purposes only, and we are in no way implying that our products are original equipment parts. Prices subject to change without notice.



Replaces R&R Products Sand Max 518

Parts

Traction Unit
Seat & Shroud



Item No	R&R Part No.	OEM Part No.	Description	Qty Req	Order Quantity
---------	--------------	--------------	-------------	---------	----------------

1	RMXB150GY	R17-4980, R27-5170, R62-9040, R66-6681, R66-7510, R750106, R76-1401, R92-8976	Milsco Seat XB150 - Grey	0	
---	-----------	--	--------------------------	---	--

*Detail Description: The Milsco XB150 Seat is a durable bucket-style seat designed with a blow molded corrosion-resistant plastic frame. The ergonomic vacuum-formed vinyl cushions are waterproof and ensure operator comfort. Covers will not crack or peel. Central drain hole prevents water build-up. Accepts operator presence switch. Seat: 18.75in W x 15.5in H. Grey. Made in U.S.A.
Please note: Due to excessive air freight charges, this item will be shipped ground freight.:*

1	R120-5178		Small Seat Cover - Gray	1	
---	-----------	--	-------------------------	---	--

Gauges and Controls

2	R151541		Delta Seat Switch - Twist Mount 1 Pole Normally Open	1	
3	R150229	R82-2190	Switch - Operator Presence	1	

Other Parts Available

12	R104-8300	R119-4041	Locknut - 5/16-18 Flanged Y/Zinc	8	
13	R108-7931-03		Base-Seat	1	
14	R150228	R351-63, R51-0780	Adjusters - Seat (Set of 2)	1	
15	R434024	434024, R3274-12	Bolt - Soc HD Cap 5/16-18 x 3/4	4	

All original equipment manufacturers names and part numbers are used for identification purposes only, and we are in no way implying that our products are original equipment parts. Prices subject to change without notice.



Replaces R&R Products Sand Max 518

Parts

*Traction Unit
Seat & Shroud*



Item No	R&R Part No.	OEM Part No.	Description	Qty Req	Order Quantity
16	R453009	3256-3, R01-166-0400, R24-10-BD, R24-9-AD, R24H1136, R32-9650, R3256-2, R3256-23, R3256-67, R3290-217, R3556-3, R4-2390, R452006, R7-0152	Washer - Flat 5/16 SAE	4	
17	R3254-2		Washer-Lock, 5/16 Int Star	4	
18	R322-2	R513338P	Bolt - Hex HD 5/16-18 x 5/8	4	
19	R108-7935-03		Shroud-Seat	1	
20	R3290-307		Pin-Hair	2	
21	R283-82	R283-23	Pin-Clevis	2	
22	R32108-9		Screw - 1/4-20x1 3/4 Flat Head	1	
23	R609588		Spacer	1	
24	R3218-1		Nut-Jam	4	
25	R301504	R32127-24, R32146-17, R3296-16, R3296-42, R915661P, RM40333	Locknut - ESNA 1/4-20	2	
26	R321-5	R321-31, R400110	Bolt - Hex HD 1/4-20 x 7/8	2	
27	R453023	R3256-1, R3256-72	Washer - Flat 1/4	2	
28	R108-6859G		Shroud-Center - Green	1	

All original equipment manufacturers names and part numbers are used for identification purposes only, and we are in no way implying that our products are original equipment parts. Prices subject to change without notice.



Replaces R&R Products Sand Max 518 Parts

*Traction Unit
Seat & Shroud*



Item No	R&R Part No.	OEM Part No.	Description	Qty Req	Order Quantity
29	R108-6898		Shroud-Dash	1	
30	R3256-22	R09061, R24-9-BD, R3-1032, R93-0954, R93-0989	Washer - Flat 1/4 Yellow	2	
31	R32144-10	R32140-81, R32144-3, R34-140-AMVD	Bolt - 1/4-20 x 3/4 Serrated Hx Wshr	9	
32	R108-7906G		Panel-Front - Green	1	
33	R1-523420		Bumper - Rubber	2	

All original equipment manufacturers names and part numbers are used for identification purposes only, and we are in no way implying that our products are original equipment parts. Prices subject to change without notice.