

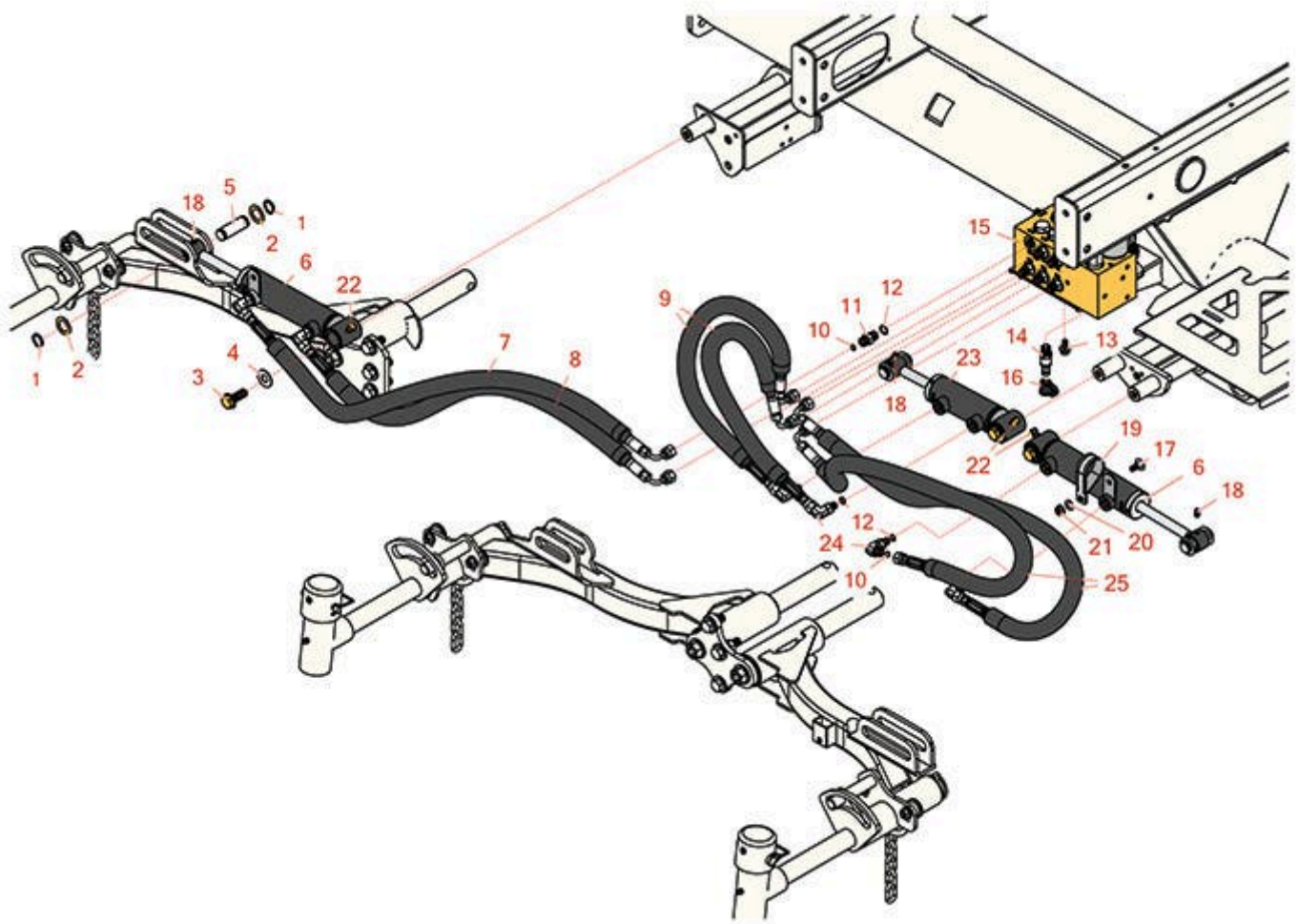


# Replaces R&R Products Reel Max 744D

## Parts

*Traction Unit*

*Front Lift Arm Cylinder*



All original equipment manufacturers names and part numbers are used for identification purposes only, and we are in no way implying that our products are original equipment parts. Prices subject to change without notice.



# Replaces R&R Products Reel Max 744D

## Parts

*Traction Unit*

*Front Lift Arm Cylinder*



Item No	R&R Part No.	OEM Part No.	Description	Qty Req	Order Quantity
1	R32120-93		Snap Ring - HD	6	
2	R3-6498	R47-8270	Washer - Thrust	6	
3	R3234-38		Bolt - Flanged Hex 1/2-13 x 1-1/4	3	
4	R453017	3256-26, R01-166-0050, R01-166-0240, R01-166-0800, R24-13-AD, R24-14-AD, R32-8110, R3256-6, R452012, R69-8980	Washer - Flat 1/2	1	
5	R104-0046		Pin - Slide - Cylinder	3	
6	R107-2033	R110-9033	Hydraulic Cylinder	2	
7	R106-3692		Hydraulic Hose Assy	1	
8	R106-3693		Hydraulic Hose Assy	1	
9	R93-6887		Hydraulic Hose Assy	2	
10	R237-21		O-Ring	12	
11	R340-92		Hydraulic Fitting - Striaght	6	
12	R237-22	R107-8844, R232-72, R237-78	O-Ring	12	
13	R3234-14	R3234-23	Bolt - Hex Serrated Washer HD	2	
14	R59-7410		Tip-Nipple	1	
15	R105-7577		Manifold Assy - Lift Blocks	1	
16	R354-79		Cap-Dust	1	

All original equipment manufacturers names and part numbers are used for identification purposes only, and we are in no way implying that our products are original equipment parts. Prices subject to change without notice.



# Replaces R&R Products Reel Max 744D Parts

*Traction Unit  
Front Lift Arm Cylinder*



Item No	R&R Part No.	OEM Part No.	Description	Qty Req	Order Quantity
17	<b>R3230-23</b>	R3-5861	Bolt - 5/16-18x3/4 - Carriage	1	
18	<b>R302-5</b>	R173-0, R21-6010, R255825, R302-37, R302-47, R302-57, R302-58, R302-6, R31-0300, R32-9660, R471214, R471223, R471226, R60-0800, R62-3880, R92-4181, RJD7797, RJD7842, RJD7844, RM0004, RZS48114-04	Fitting - Grease	4	
19	<b>R2412-137</b>		Clamp-R, Double	1	
20	<b>R453009</b>	3256-3, R01-166-0400, R24-10-BD, R24-9-AD, R24H1136, R32-9650, R3256-2, R3256-23, R3256-67, R3290-217, R3556-3, R4-2390, R452006, R7-0152	Washer - Flat 5/16 SAE	1	
21	<b>R104-8300</b>	R119-4041	Locknut - 5/16-18 Flanged Y/Zinc	1	
22	<b>R302-60</b>		Zerk - Grease 90 Deg.	3	
23	<b>R107-2034</b>	R110-9034	Hydraulic Cylinder	1	

All original equipment manufacturers names and part numbers are used for identification purposes only, and we are in no way implying that our products are original equipment parts. Prices subject to change without notice.



# Replaces R&R Products Reel Max 744D Parts

*Traction Unit  
Front Lift Arm Cylinder*



Item No	R&R Part No.	OEM Part No.	Description	Qty Req	Order Quantity
24	R340-132		Hydraulic Fitting - 90 Deg	6	
25	R85-4940		Hydraulic Hose Assy	2	

All original equipment manufacturers names and part numbers are used for identification purposes only, and we are in no way implying that our products are original equipment parts. Prices subject to change without notice.